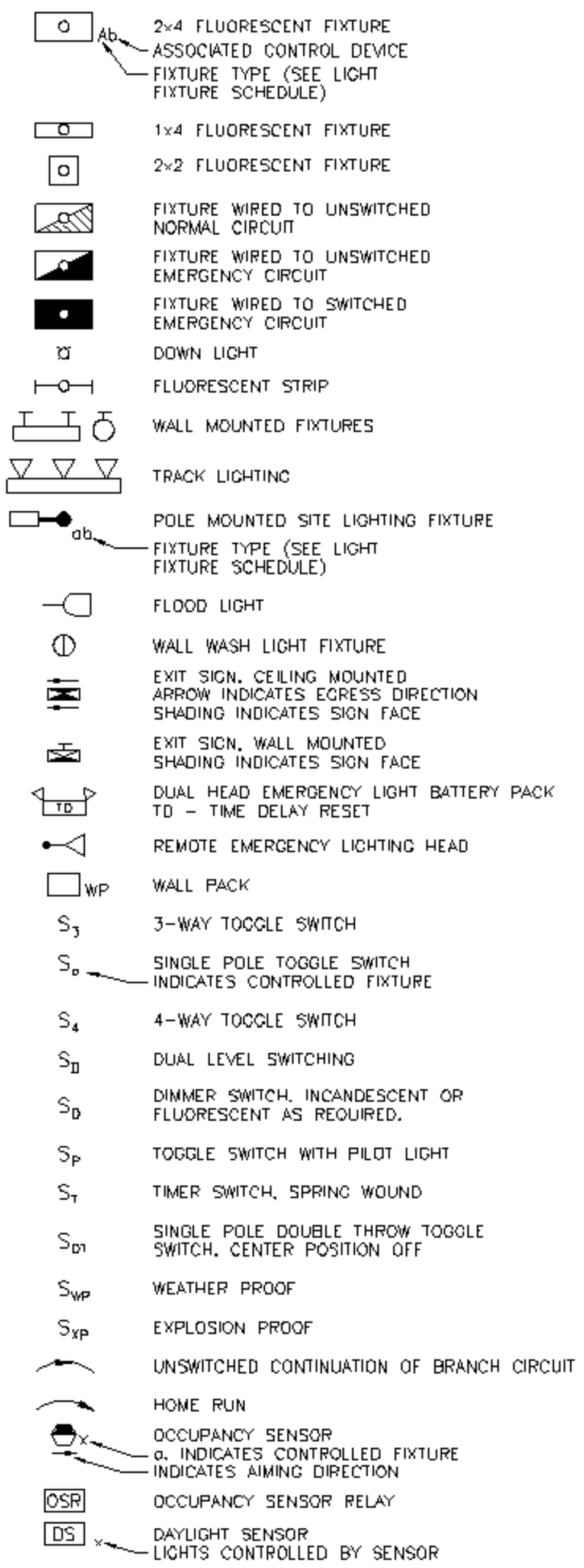
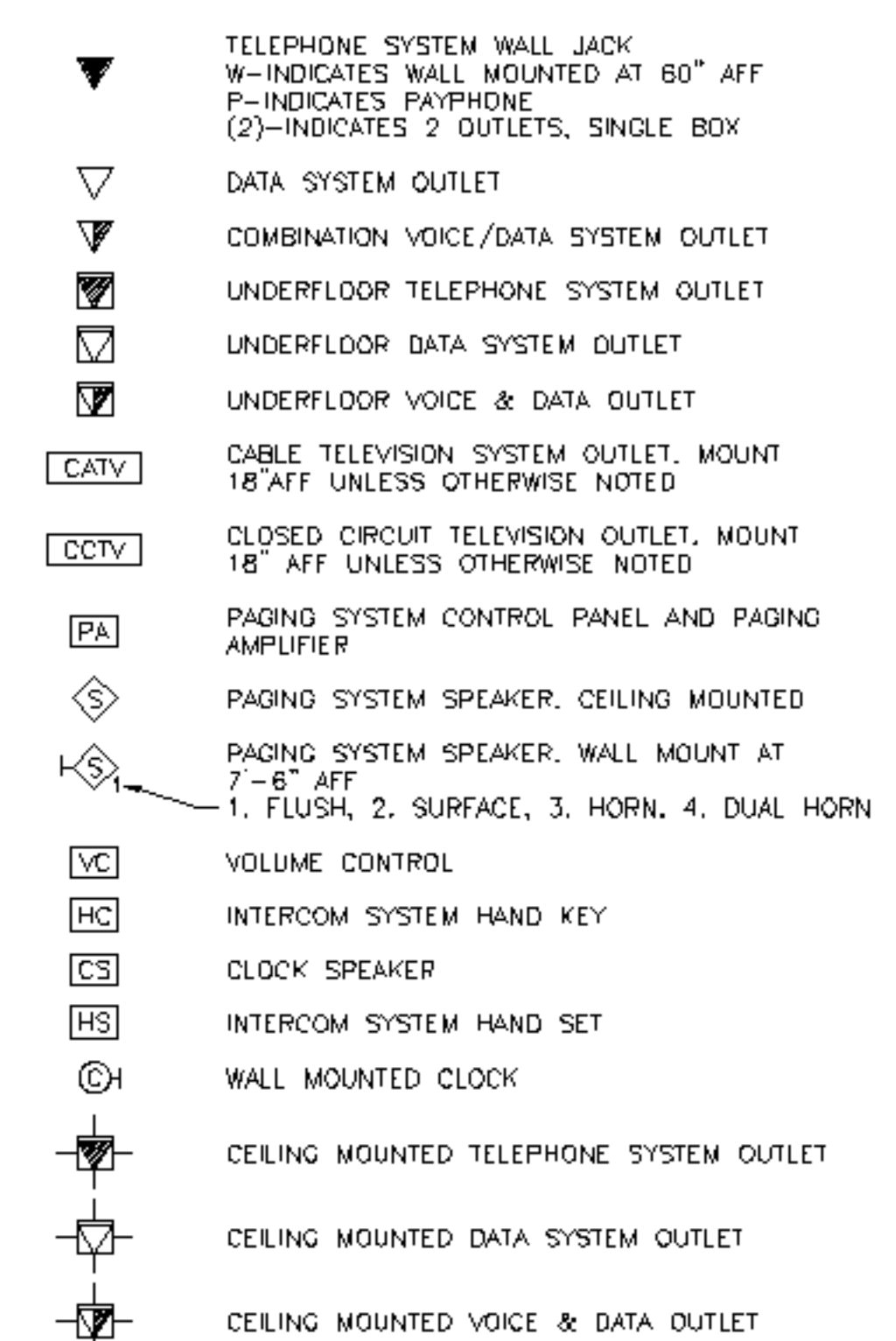


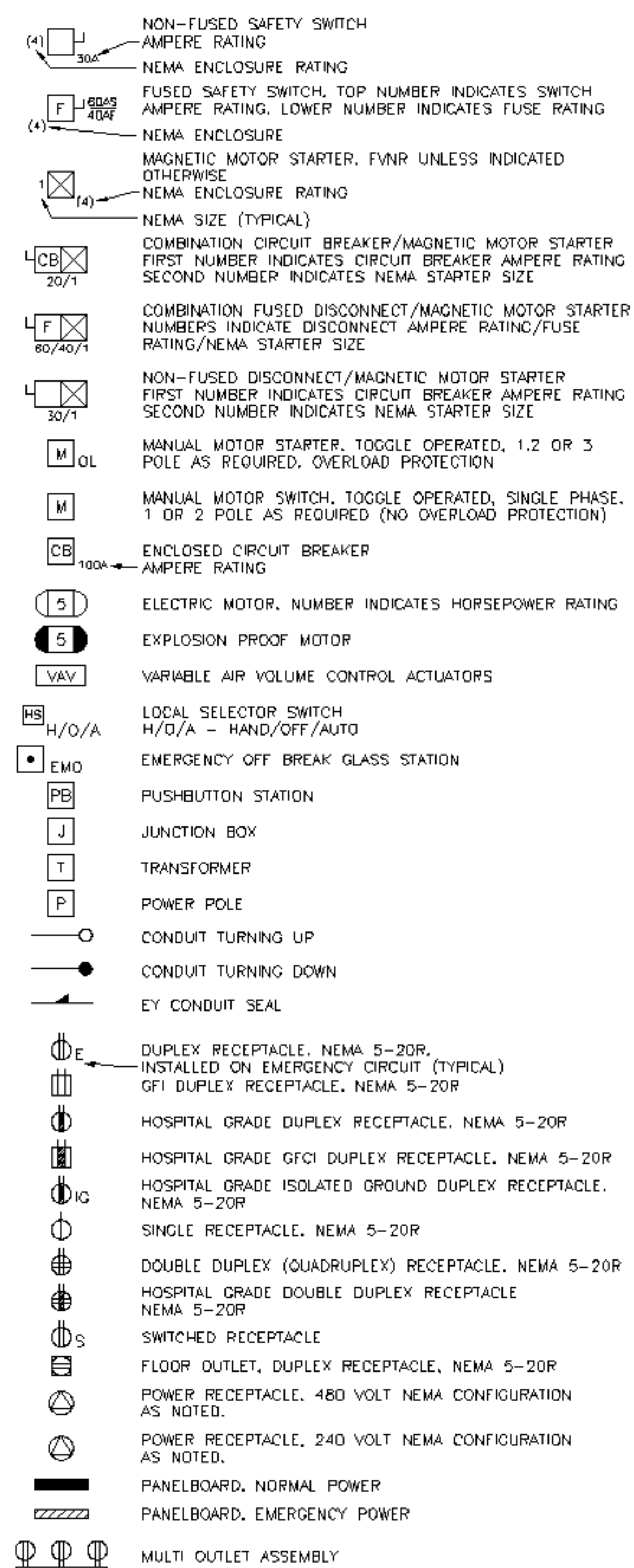
LIGHTING



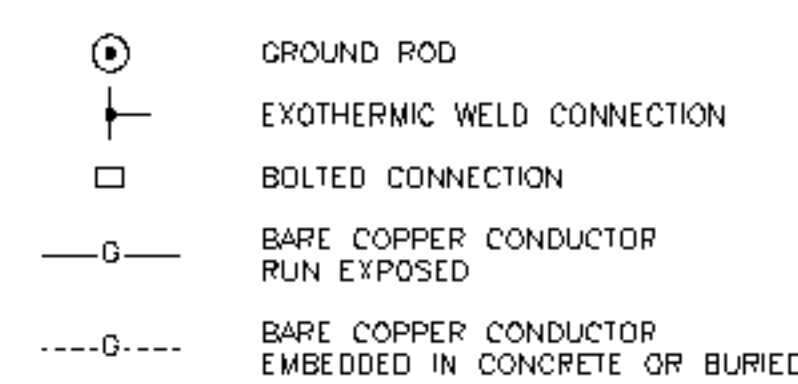
COMMUNICATION & DATA SYSTEMS



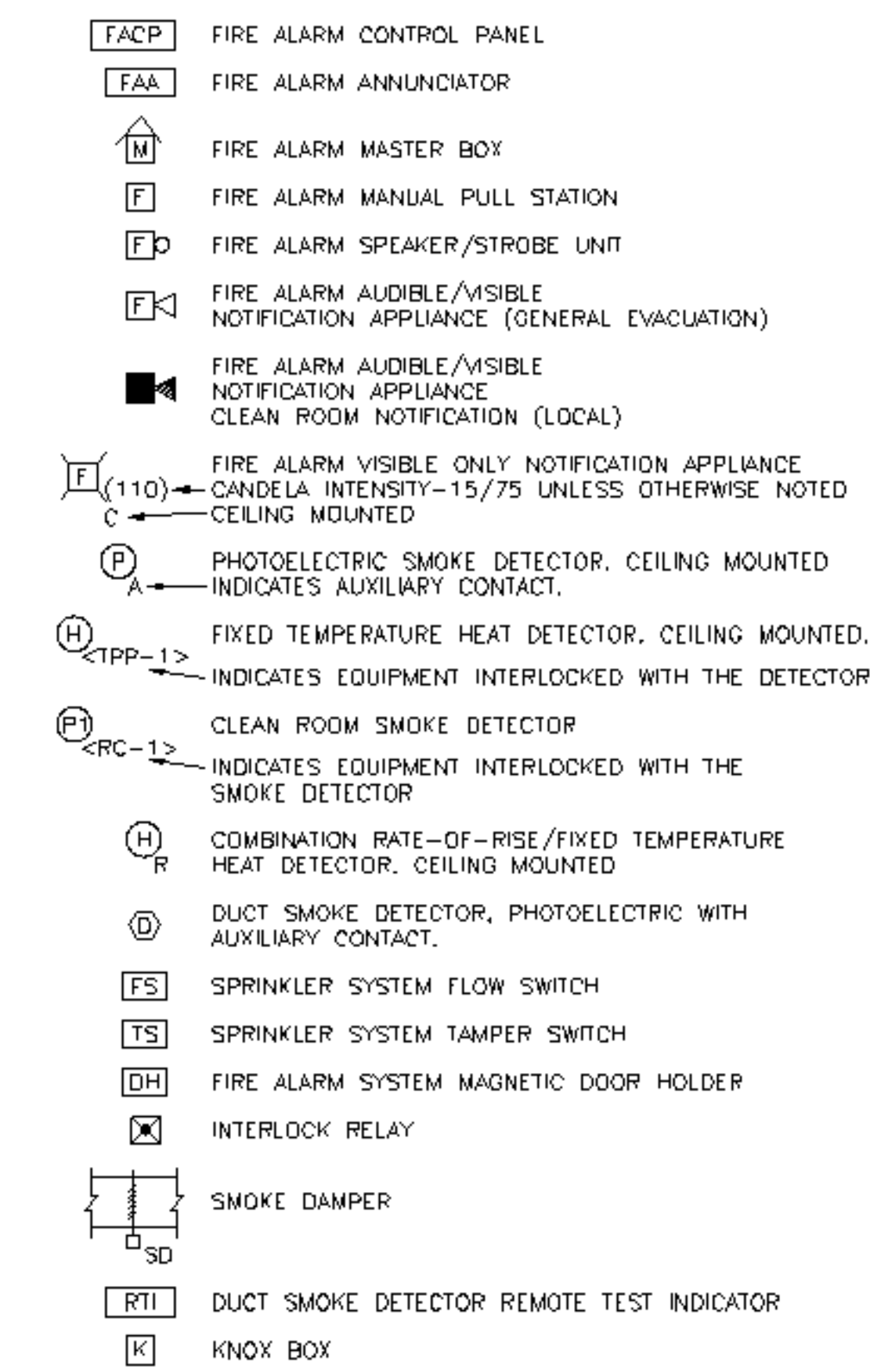
POWER



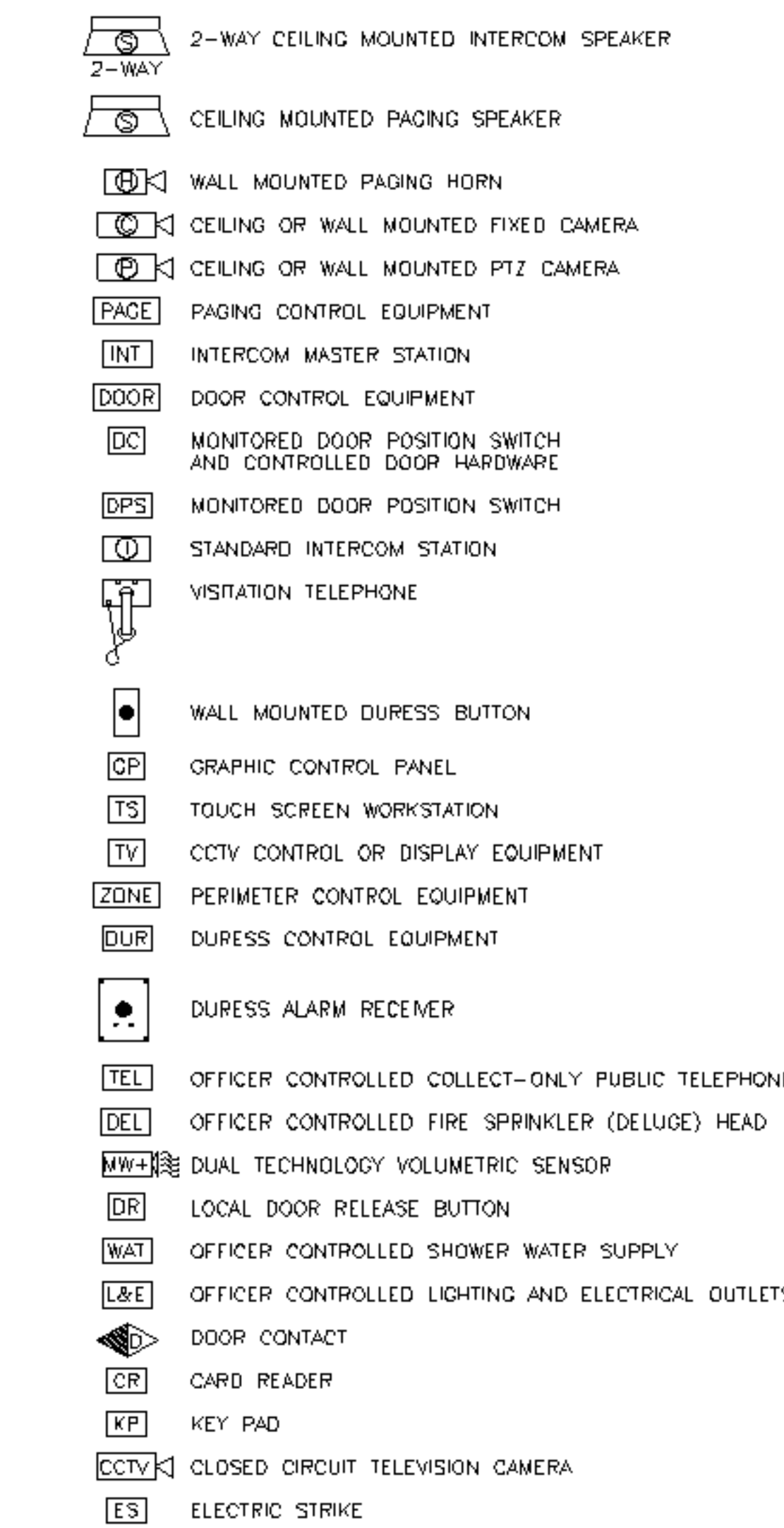
GROUNDING



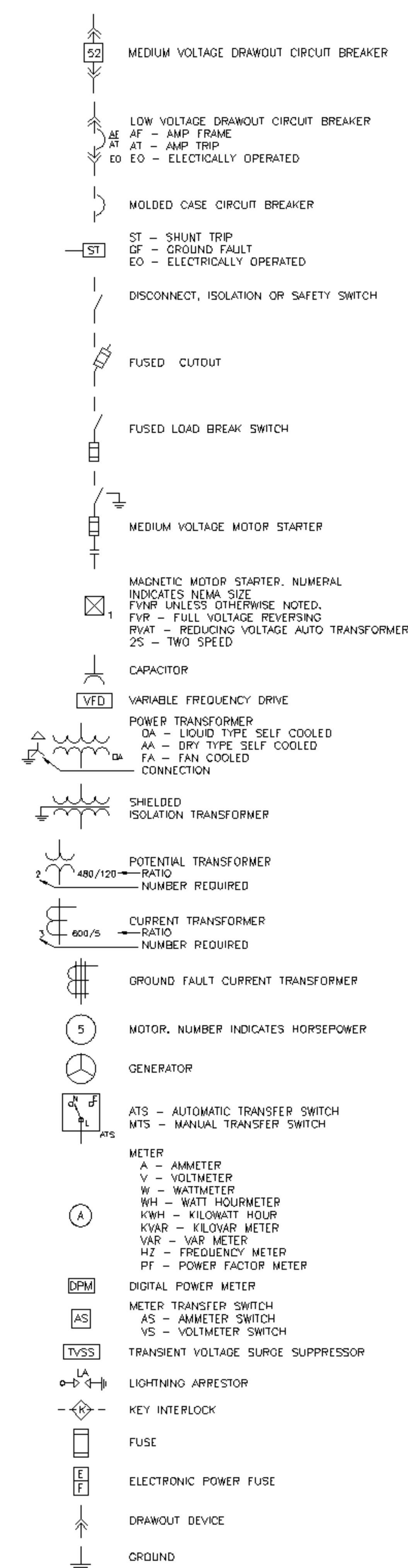
FIRE ALARM



SECURITY SYSTEMS



ONE LINE DIAGRAM



ABBREVIATIONS

A-AMP	AMPERE	LA	LIGHTNING ARRESTER
AFF	ABOVE FINISHED FLOOR	LTG	LIGHTING
AFG	ABOVE FINISHED GRADE	MC	METAL CLAD
AHJ	AUTHORITY HAVING JURISDICTION	MCB	MAIN CIRCUIT BREAKER
AIC	AMPERE INTERRUPTING CAPACITY	MFR	MANUFACTURER
AWG	AMERICAN WIRE GAUGE	MI	MINERAL INSULATED
BFG	BELOW FINISHED GRADE	MLO	MAIN LUG ONLY
BOS	BOTTOM OF STEEL	MTO	MOUNTED
C	CONDUIT, CONDUCTOR	MV	MEDIUM VOLTAGE
CATV	CABLE TELEVISION	NC	NORMALLY CLOSED
CIR	CIRCUIT BREAKER	NEC	NATIONAL ELECTRICAL CODE
CCTV	CLOSED CIRCUIT TELEVISION	NEG	NEGATIVE
CPT	CONTROL POWER TRANSFORMER	NEUT	NEUTRAL
CT	CURRENT TRANSFORMER	NIC	NOT IN CONTRACT
CU	COPPER	NO	NORMALLY OPEN
DACT	DIGITAL ALARM COMMUNICATOR TRANSMITTER	NTS	NOT TO SCALE
DE	DIRECT BURIED	PF	POWER FACTOR
DISC	DISCONNECT	PH	PHASE
DN	DOWN	PVC	POLYVINYL CHLORIDE
EMT	ELECTRICAL METALLIC TUBING	RSC	RIGID STEEL CONDUIT
EWC	ELECTRIC WATER COOLER	RSD	RIGID STEEL CONDUIT DETECTOR
FAA	FIRE ALARM ANNUNCIATOR	RSC	RIGID STEEL CONDUIT
FBO	FURNISHED BY OTHERS	RTD	RESISTANCE TEMPERATURE DETECTOR
FU	FUSE	SN	SOLID NEUTRAL
FWE	FURNISHED WITH EQUIPMENT	STP	SHIELDED TWISTED PAIR
GEN	GENERATOR	STT	SHIELDED TWISTED TRIPLET
GFCI	GROUND FAULT CIRCUIT INTERRUPTER	SWBD	SWITCHBOARD
GND	GROUND	SWGGR	SWITCHGEAR
HP	HORSEPOWER	TOS	TOP OF STEEL
HTR	HEATER	TRANSF	TRANSFORMER
IG	ISOLATED GROUND	TVSS	TRANSIENT VOLTAGE SURGE SUPPRESSOR
IMC	INTERMEDIATE METAL CONDUIT	V	VOLT
K	KILO	V-AMP	VOLT-AMPERE
KCMIL	THOUSAND CIRCULAR MILS	VAR	VOLT-AMPERE REACTIVE
KV	KILOVOLT	WM	WATT METER
KVA	KILOVOLT-AMPERE	WP	WEATHER PROOF
KVAR	KILOVOLT AMPERE REACTIVE	XFMR	TRANSFORMER
KW	KILOWATT	XP	EXPLOSION PROOF
KWH	KILOWATT-HOUR		

GENERAL NOTES:

- ALL WORK SHALL BE PERFORMED IN ACCORDANCE WITH NFPA-70, NATIONAL ELECTRICAL CODE (NEC).
- ALL MOTOR SAFETY SWITCHES, DISCONNECTS AND MOTOR STARTERS ARE PROVIDED BY DIVISION 16000 UNLESS NOTED AS FURNISHED WITH EQUIPMENT (FWE).
- UNLESS OTHERWISE NOTED CONVENIENCE RECEPTACLES SHALL BE MOUNTED 18-INCHES AFF, LIGHTING TOGGLE SWITCHES 48-INCHES AFF, DATA SYSTEM OUTLETS 18-INCHES AFF, FIRE ALARM NOTIFICATION DEVICES 80-INCHES AFF OR 6-INCHES BELOW CEILING, WHICHEVER IS LOWER, AND FIRE ALARM MANUAL PULL STATIONS 48-INCHES AFF TO TOP OF DEICE.
- ALL PENETRATIONS THROUGH FLOORS, RATED WALLS AND PARTITIONS SHALL BE SEALED WITH UL APPROVED FIRE SEALANT MATERIAL TO MAINTAIN THE RATING OF THE SEPARATION.
- ALL ENCLOSURES, CONDUIT BODIES AND THEIR COVERS CONTAINING FIRE ALARM SYSTEM CONDUCTORS SHALL BE PAINTED RED.
- AN EQUIPMENT GROUNDING CONDUCTOR SHALL BE INSTALLED WITH EVERY FEEDER AND BRANCH CIRCUIT.
- UNLESS OTHERWISE NOTED WIRING SHALL BE 2 #12 AWG CONDUCTORS & #12 GND. HOME RUNS FED FROM 20A-1P CIRCUITS IN EXCESS OF 100 FEET SHALL BE #10 AWG.
- FLEXIBLE CONNECTIONS TO MOTORS SHALL BE LIQUID TIGHT FLEXIBLE METAL CONDUIT, UNLESS OTHERWISE NOTED.
- LIGHTING TOGGLE SWITCHES SHALL BE COMMERCIAL SPECIFICATION, GRADE 120/277 VOLT, SIDE WIRED AND PROVIDED WITH GROUNDING SCREW, LEVITON, PASS AND SEYMOUR OR APPROVED EQUAL. COORDINATE COLOR WITH ARCHITECT.
- CONVENIENCE RECEPTACLES SHALL BE COMMERCIAL SPECIFICATIONS GRADE GROUNDING TYPE NEMA 5-20R, SIDE WIRED, LEVITON, PASS AND SEYMOUR OR APPROVED EQUAL. COORDINATE COLOR WITH ARCHITECT.
- PROVIDE WALL PLATES FOR ALL WIRING DEVICES, NYLON SMOOTH TYPE IN FINISHED AREAS AND GALVANIZED IN UNFINISHED AREAS.
- ALL WIRING SHALL BE 600V, COPPER WITH THHN/THWN INSULATION.
- PROVIDE UPDATED TYPED PANEL SCHEDULES FOR ALL PANELBOARDS BEING MODIFIED.

TYPE	DESCRIPTION	MFR	LAMPS	MOUNTING	NOTES
A	4' DIRECT/INDIRECT FIXTURE W/ 3" PROFILE, FIXTURES TO HAVE ROUNDED ENDCAP.	FINELITE SERIES 5	1-F54T5 HO 3500K	AIR CRAFT CABLE	MOUNT 7'-9" AFF.
B	2x4 PARABOLIC TROFFER W/ SEMI-SPECULAR REFLECTOR, 24" CELL, 3" DEEP LOUVER.	COLUMBIA P424 SERIES	3-F32T8 3500K	RECESSED	PROVIDE FOR DUAL LEVEL SWITCHING.
C	NOT USED				
D	8" ROUND APERTURE DOWNLIGHT W/ CLEAR ALZAK REFLECTOR.	PRESCOLITE CFR8 SERIES	2-26W QUAD TUBE	RECESSED	
E	EXIT SIGN WITH BRUSHED ALUMINUM FACE & GREEN LETTERING.	DUALITE SEMPR4 SERIES	LED	CEILING OR WALL	

GENERAL NOTE

1. ALL GENERAL NOTES, SYMBOL LISTS, AND DETAILS ARE TO BE CONSIDERED AS APPLICABLE TO ALL ELECTRICAL DRAWINGS FOR THIS PROJECT. SYMBOLS AND ABBREVIATIONS SHOWN ON THIS SHEET ARE FOR REFERENCE ONLY AND DO NOT INDICATE THEIR INCORPORATION IN THE DESIGN.

REV.	ISSUED FOR CONSTRUCTION	3-10-05
REV.	DESCRIPTION	DATE
ISSUED FOR CONSTRUCTION		
3-10-05		
CURRENT ISSUE STATUS:		
PROJECT NORTH	<p style="text-align: center;">ARCHITECTURE ENGINEERING PLANNING</p> <p style="text-align: center;">SMIT</p> <p style="text-align: center;">144 Fore Street, P.O. Box 618 Portland, Maine 04104</p> <p style="text-align: center;">Tel. (207) 772-3846 Fax. (207) 772-1070</p>	
UnumProvident HO-1 3rd FLOOR OFFICE RENOVATIONS PORTLAND, ME.		
LEGEND & GENERAL NOTES		
SHEET TITLE:		
SCALE:	AS NOTED	DATE: 3-10-05
PROJECT MANAGER:	JLH	GRAPHIC SCALE: 0"
JOB CAP/DRAWN:	CEB/LAM	
A/E OF RECORD:	DJT	SHEET No.
SMART CAD FILE:	E-001-05004	E-001
PROJECT No.	05004	