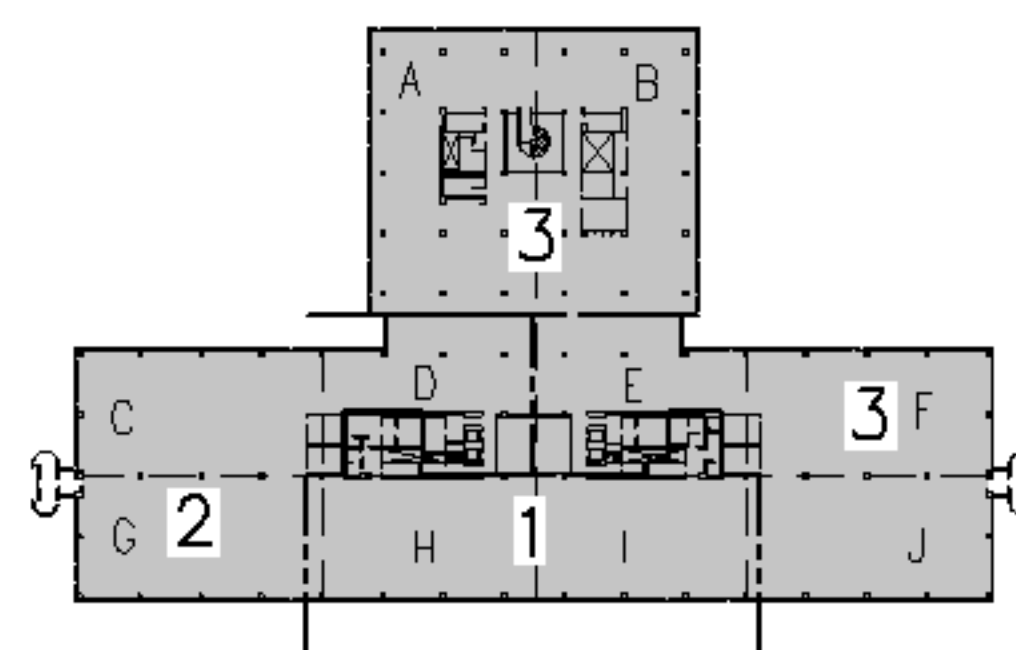


DEMOLITION GENERAL NOTES

1. REMOVE AND PATCH ALL UNNECESSARY SWITCH PLATES, FAN SWITCHES, BLANK COVER PLATES, ETC.
2. REMOVE CARPET, BASE, CEILINGS, LIGHTS, HVAC DEVICES, EXCEPT IN AREAS SPECIFICALLY NOTED.

DEMOLITION KEY NOTES

- ① REMOVE CMU WALL, DOOR, AND FRAME.
- ② (NOT USED)
- ③ REMOVE ELECTRIC DRINKING FOUNTAIN (EDF). CAP PLUMBING, DISCONNECT ELECTRICAL POWER AT PANEL.
- ④ REMOVE CARPETING AND VINYL WALL COVERING
- ⑤ CUT OPENING IN CHASE WALL TO ACCESS PLUMBING FOR NEW ELECTRIC DRINKING FOUNTAIN.
- ⑥ REMOVE DOORS AND FRAME, CUT WALL EXTENSIONS FLUSH WITH SIDE WALL, AND REMOVE FALSE FLOOR.
- ⑦ REMOVE WALL-MOUNTED COVE LIGHTING, DISCONNECT ELECTRICAL POWER AT WALL SWITCH, PATCH WALL TO MATCH ADJACENT.

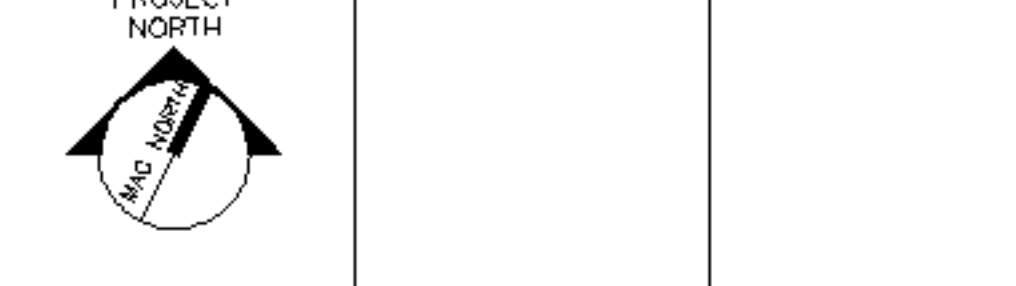


F18 KEY PLAN

NOT TO SCALE		
0	ISSUED FOR CONSTRUCTION	3-10-05
REV.	DESCRIPTION	DATE

ISSUED FOR CONSTRUCTION
3-10-05

CURRENT ISSUE STATUS:



ARCHITECTURE ENGINEERING PLANNING
SMRT
144 Fore Street, P.O. Box 618
Portland, Maine 04104
Tel. (207) 772-3846
Fax. (207) 772-1070

UnumProvident HO-1
3rd FLOOR OFFICE RENOVATIONS
PORTLAND, ME.

PRIVATE OFFICES
DEMOLITION FLOOR PLAN

SHEET TITLE:	
SCALE: 1/8"=1'-0"	DATE:
PROJECT MANAGER: JLH	GRAPHIC SCALE: 0" 1"
JOB CAP/DRAWN: CEB	
A/E OF RECORD: JLH	SHEET No.
SMRT CAD FILE: AD105-05004	AD105
PROJECT No. 05004	