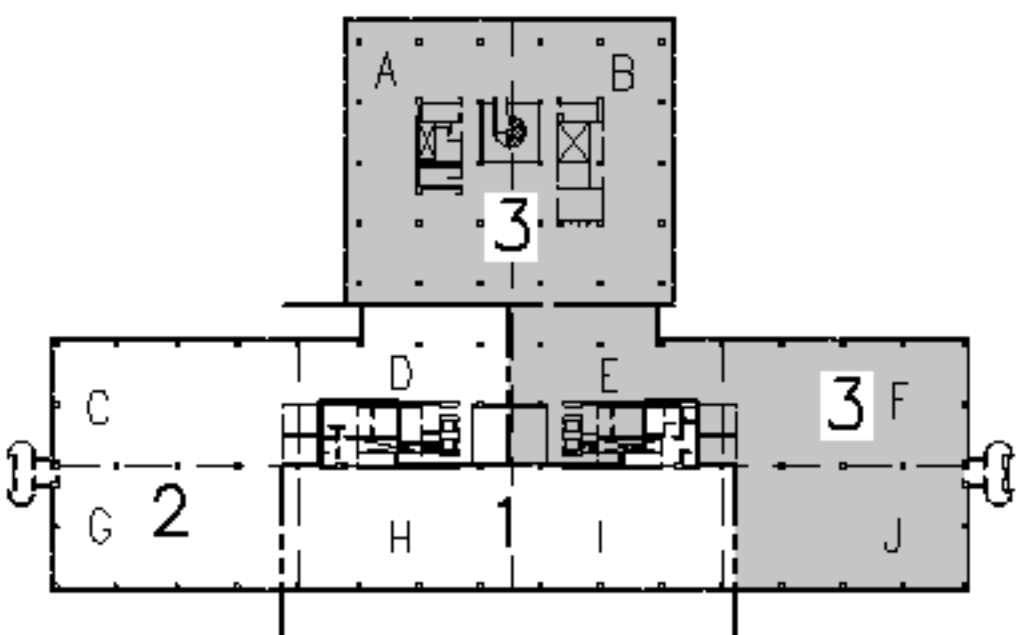
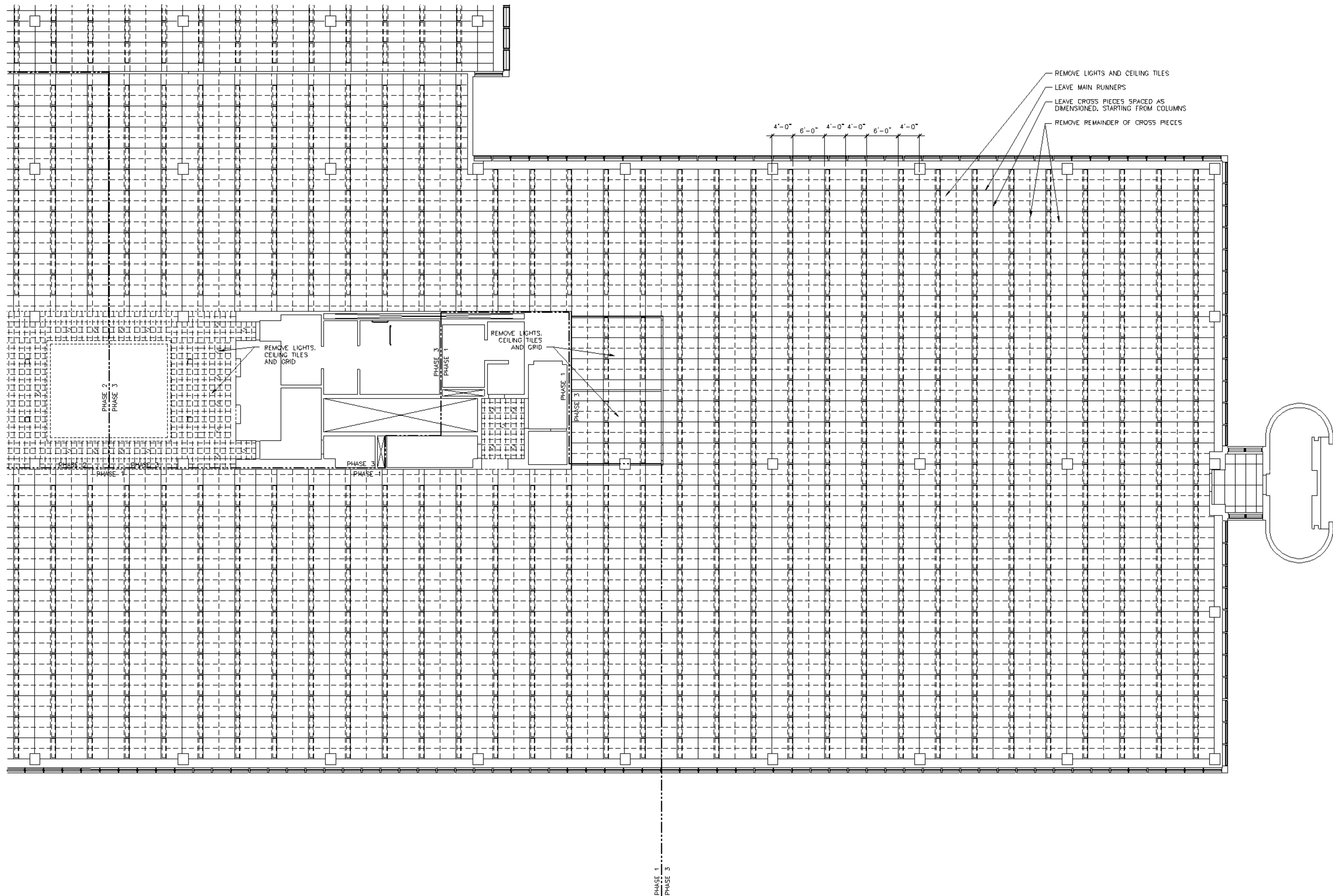


GENERAL DEMOLITION NOTES

1. PROVIDE DUST PARTITIONS TIGHT TO CEILING. COORDINATE LOCATIONS WITH MECHANICAL AND ELECTRICAL TRADES. PROVIDE EGRESS DOORS AS NECESSARY.



F18 KEY PLAN

| | | |
|--------------|-------------------------|---------|
| NOT TO SCALE | | |
| 0 | ISSUED FOR CONSTRUCTION | 3-10-05 |
| REV. | DESCRIPTION | DATE |

ISSUED FOR CONSTRUCTION
3-10-05

CURRENT ISSUE STATUS:



ARCHITECTURE ENGINEERING PLANNING
SMRT
144 Fore Street, P.O. Box 618
Portland, Maine 04104
tel. (207) 772-3846
fax. (207) 772-1070

UnumProvident HO-1
3rd FLOOR OFFICE RENOVATIONS
PORTLAND, ME.

PHASE III - PARTIAL REFLECTED
CEIL. DEMOLITION PLAN - EAST

| | | | |
|------------------|-------------|----------------|-------|
| SCALE: | 1/8"=1'-0" | DATE: | |
| PROJECT MANAGER: | JLH | GRAPHIC SCALE: | 0" 1" |
| JOB CAP/DRAWN: | CEB | SHEET No. | |
| A/E OF RECORD: | JLH | | |
| SMRT CAD FILE: | AD103-05004 | | |
| PROJECT No. | 05004 | | |

A1 PHASE III - PARTIAL REFLECTED CEILING DEMOLITION PLAN - EAST

1/8"=1'-0"