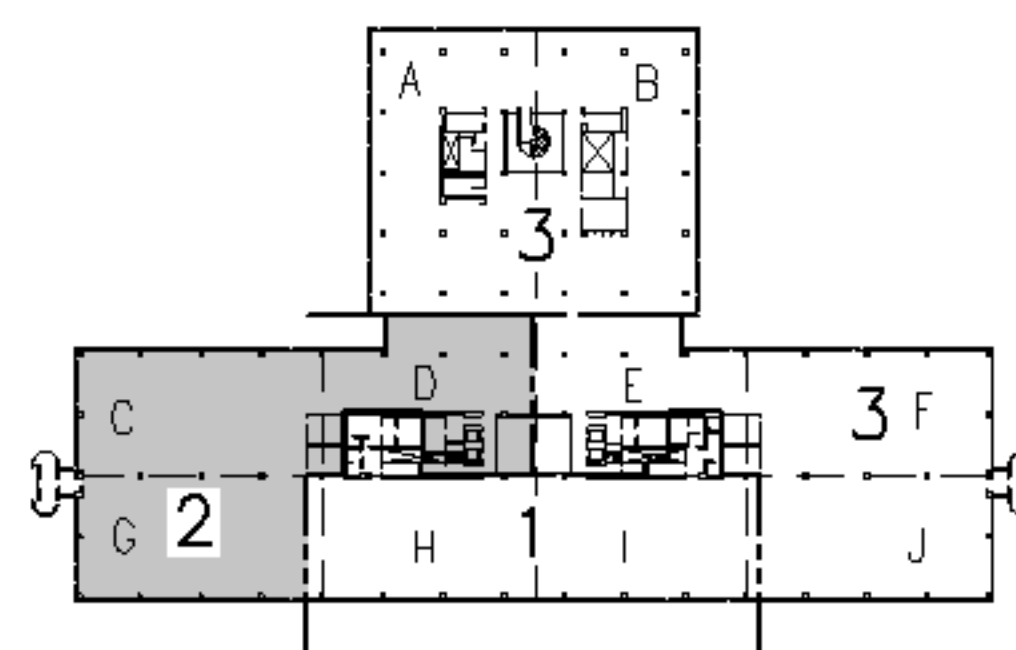
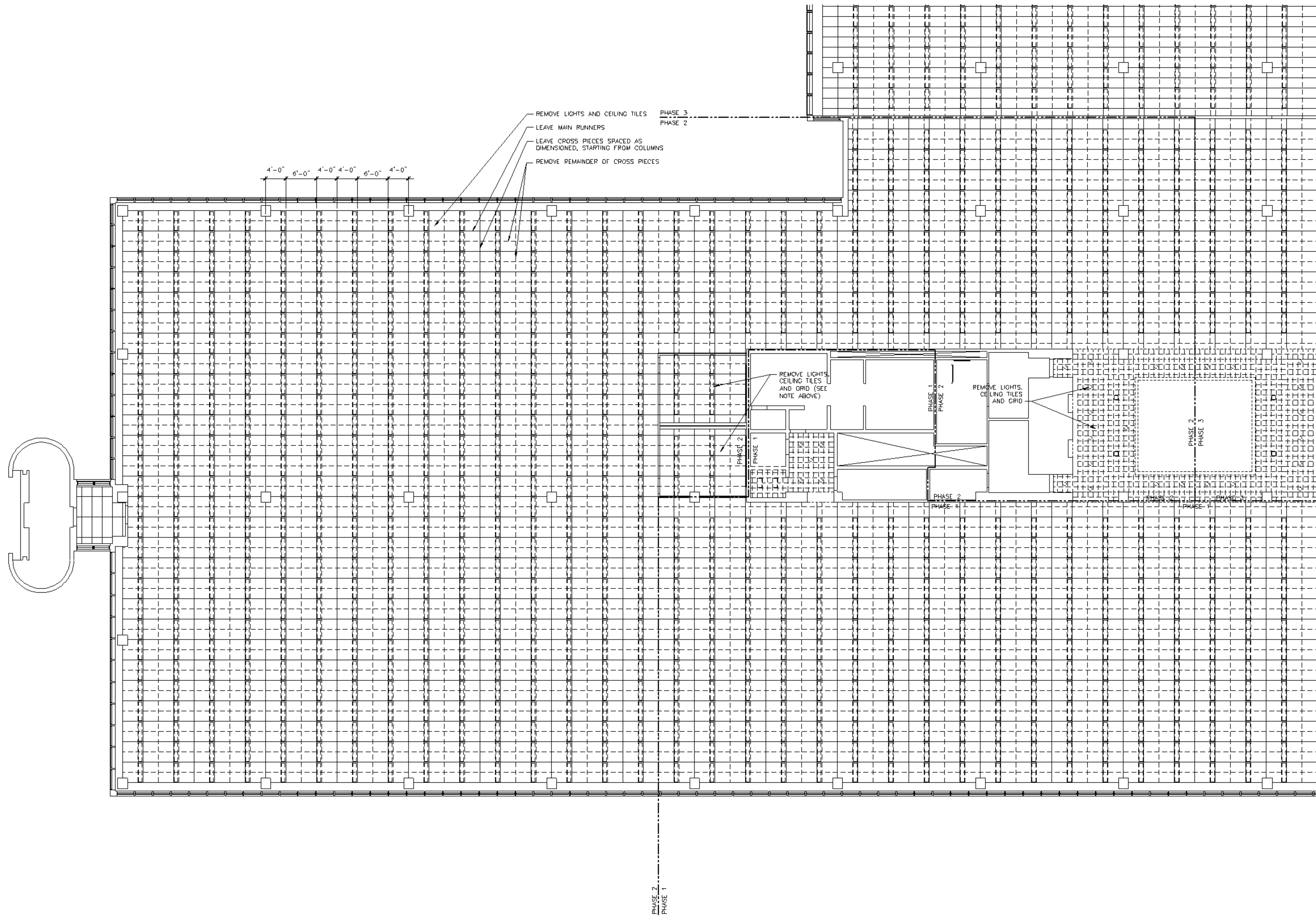


**GENERAL DEMOLITION NOTES**

1. PROVIDE DUST PARTITIONS TIGHT TO CEILING. COORDINATE LOCATIONS WITH MECHANICAL AND ELECTRICAL TRADES. PROVIDE EGRESS DOORS AS NECESSARY.

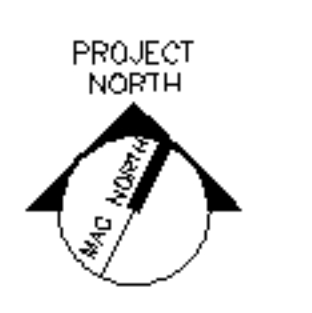


F18 KEY PLAN

0	ISSUED FOR CONSTRUCTION	3-10-05
REV.	DESCRIPTION	DATE

**ISSUED FOR CONSTRUCTION**  
**3-10-05**

CURRENT ISSUE STATUS:



**ARCHITECTURE ENGINEERING PLANNING**  
SMRT  
144 Fore Street, P.O. Box 618  
Portland, Maine 04104  
Tel. (207) 772-3846  
Fax. (207) 772-1070

UnumProvident HO-1  
3rd FLOOR OFFICE RENOVATIONS  
PORTLAND, ME.

PROJECT: PHASE II  
REFL. CEIL. DEMOLITION PLAN

SHEET TITLE:	
SCALE: 1/8"=1'-0"	DATE:
PROJECT MANAGER: JLH	GRAPHIC SCALE: 0" 1"
JOB CAP/DRAWN: CEB	
A/E OF RECORD: JLH	SHEET No. AD102
SMRT CAD FILE: AD102-05004	
PROJECT No. 05004	

A1 PHASE II REFLECTED CEILING DEMOLITION PLAN

1/8"=1'-0"