

FITTER'S NOTES
2ND FLOOR WEST:

ALL PENDENT HEADS ARE TO BE CENTERED IN THE A.C.T. ALL PENDENTS ARE 36" OR 48" FLEXHEADS. IN THIS AREA THERE ARE 105 36" FLEXHEADS AND 84 48" FLEXHEADS. 156 OF THE FLEXHEADS ON THIS FLOOR CAN BE TIED DIRECTLY INTO EXISTING OUTLETS AND THERE ARE 34 THAT REQUIRE ARMOVERS AS NOTED ON THE DRAWING. LINES REQUIRING TIE IN BY MECHANICAL TEES ARE DENOTED ON THE DRAWING.

LEGEND:

- CONCEALED PENDENT HEAD ON A 1" FLEXHEAD
- UPRIGHT HEAD ON A 1" SPRIG FOR ABOVE CEILING PROTECTION
- MECH. TEE
- RISE OR DROP
- GROOVED RIGID COUPLING
- CEILING HEIGHT
- HANGER
- EXISTING PIPE
- NEW PIPE

- F \varnothing = X'-X" FINISHED FLOOR TO PIPE CENTERLINE
- C \varnothing = X'-X" CEILING TO PIPE CENTERLINE
- D \varnothing = X'-X" CONCRETE DECK TO PIPE CENTERLINE

GENERAL NOTES:

ALL 1" THREADED PIPE IS TO BE DOMESTIC SCH. 40 BLACK STEEL. ALL THREADED PIPE FITTINGS ARE TO BE DOMESTIC BLACK CAST IRON, CLASS 125. PIPE LENGTHS SHOWN ON THREADED PIPE ARE CENTER TO CENTER UNLESS NOTED. DIMENSIONS SHOWN ON THREADED PIPE ARE CENTER TO CENTER U/N. UPRIGHT HEADS SURROUNDING MONUMENTAL STAIRS ARE FOR WATER CURTAIN. PENDENT SPRINKLERS IN ACOUSTIC CEILING TILE ARE TO BE CENTERED IN THE TILE. ALL PENDENT SPRINKLERS ARE FLEXHEADS OUT OF EXISTING OUTLETS OR FLEXHEADS ON SMALL ARMOVERS OUT OF EXISTING OUTLETS. SUFFICIENT HEAT TO PREVENT FREEZING OF THE WET PIPE SPRINKLER SYSTEM IS REQUIRED TO BE FURNISHED BY THE BUYER/OWNER.

SYSTEM CLASSIFICATION:

THE EXISTING WET PIPE SYSTEM OF AUTOMATIC SPRINKLERS IS DESIGNED FOR LIGHT HAZARD OCCUPANCY IN ACCORDANCE WITH NFPA-13, STANDARD FOR THE INSTALLATION OF SPRINKLER SYSTEMS, 2016 EDITION.

SCOPE OF WORK:

A HEAD RELOCATION OF THE EXISTING WET PIPE SYSTEM OF AUTOMATIC SPRINKLERS IN THE RENOVATED 1ST AND 2ND FLOORS PER NEW PARTITION AND CEILING LAYOUT. A WATER CURTAIN TO PROTECT THE MONUMENTAL STAIR. SYSTEM IS DESIGNED IN ACCORDANCE WITH NFPA-13, STANDARD FOR THE INSTALLATION OF SPRINKLER SYSTEMS, 2016 EDITION.

HEAD LEGEND
2ND FLOOR WEST:

- 190 RELIABLE MODEL 65-56 CONCEALED PENDENT
- 135' QUICK RESPONSE, STANDARD COVERAGE WHITE, 135F WHITE COVER PLATE
K=5.6, 1/2 NPT", SIN RA3415

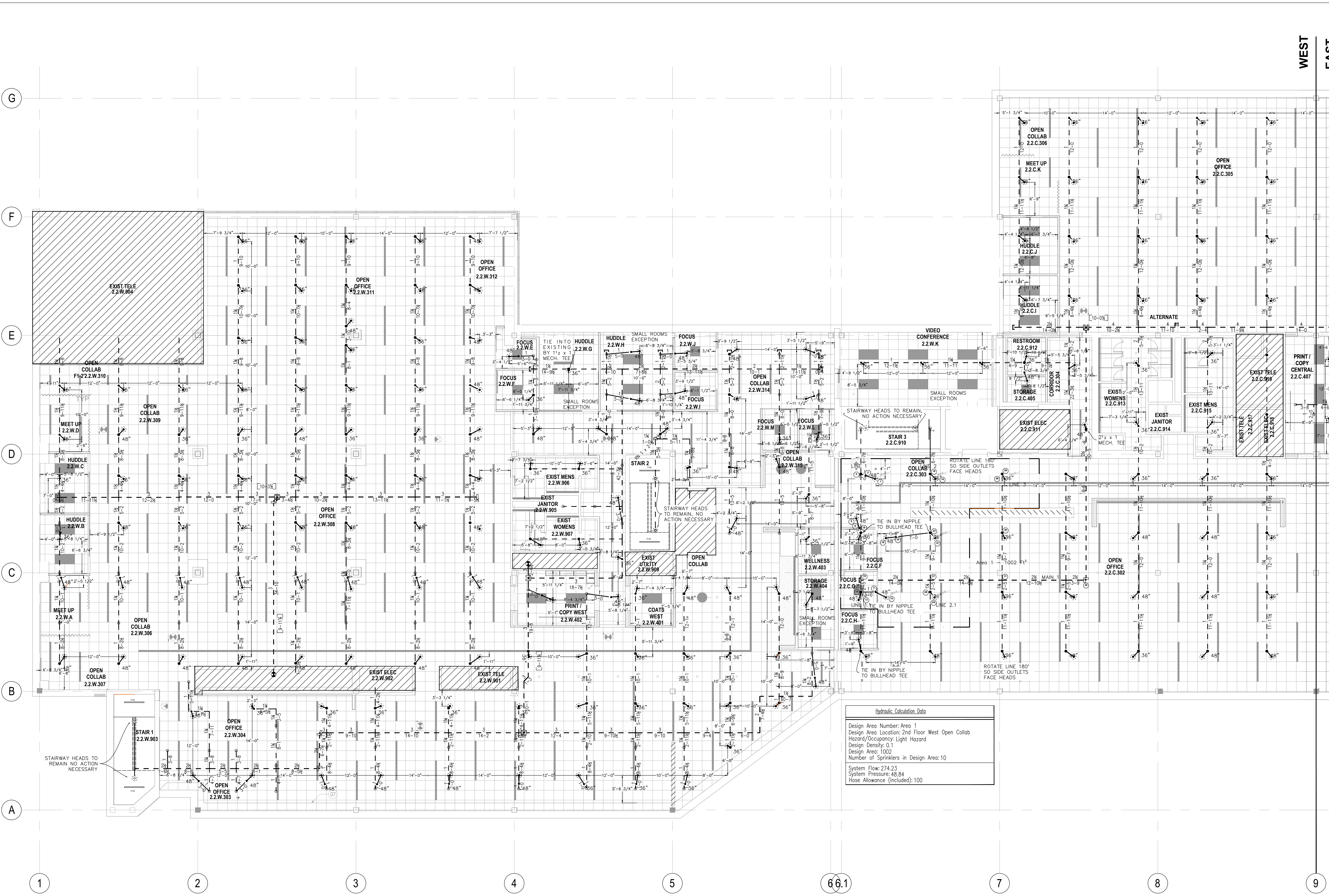
DEAN & ALLYN, INC.
FIRE PROTECTION • SPECIAL HAZARD

116 LEWISTON ROAD, GRAY, MAINE 04039
207/657-5646 FAX 207/657-5647

FP-04

FIRE PROTECTION SUBCONTRACTOR: DEAN & ALLYN, INC.
STATE OF MAINE CONTRACTOR'S LICENSE NUMBER FSC262
EXPIRATION DATE: JUNE 30, 2019

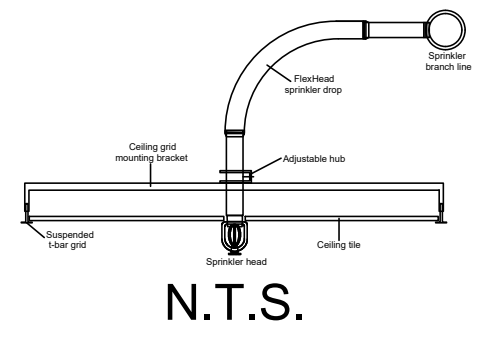
		DANA A. STEWART NICET IV - #064544		DRAWING TITLE: SECOND FLOOR WEST FIRE PROTECTION PLAN		REV. 0	
APPROVED BY:		DATE:		SURVEYED BY: ZJG 11/6/17		NO. OF SPRINKLERS SHOWN ON THIS SHEET: 190	
DRAWN BY: ZJG 11/21/17		CHECKED BY: CAS 11/28/17		AT DEAN & ALLYN, INC		NO. OF SPRINKLERS ON 2ND FLOOR: 827	
SCALE 1/8"=1'-0" U/N		SCALE 1/8"=1'-0" U/N		CONTRACT WITH: CONSIGLI CONSTRUCTION 15 FRANKLIN ST. PORTLAND, ME 04101		CONTRACT NO.: C171470	
SHEET NO. 4 OF 5		SUBMIT FOR APPROVAL: -/-/		REVISIONS:		DATE:	



Hydraulic Calculation Data

Design Area Number: Area 1
Design Area Location: 2nd Floor West Open Collab
Hazard/Occupancy: Light Hazard
Design Density: 0.1
Design Area: 1002
Number of Sprinklers in Design Area: 10
System Flow: 274.23
System Pressure: 48.84
Hose Allowance (Included): 100

FlexHead Suspended Ceiling Detail



SITE PLAN:

