

- ### HEAD LEGEND
- RELIABLE MODEL F1FR56 RECESS PENDENT
 - QUICK RESPONSE, STANDARD COVERAGE K-5.6, 1/2" NPT, SIN RA1425
 - RELIABLE MODEL J112 EOLH WHITE PENDENT
 - QUICK RESPONSE, EXTENDED COVERAGE (QB18) K-31.2, 3/4" NPT, SIN RA7216
 - RELIABLE MODEL F1FR56 BRASS UPRIGHT
 - QUICK RESPONSE, STANDARD COVERAGE K-5.6, 1/2" NPT, SIN RA1425
 - RELIABLE MODEL F1FR56 BRASS HSW
 - QUICK RESPONSE, STANDARD COVERAGE K-5.6, 1/2" NPT, SIN RA1425

SYSTEM CLASSIFICATION

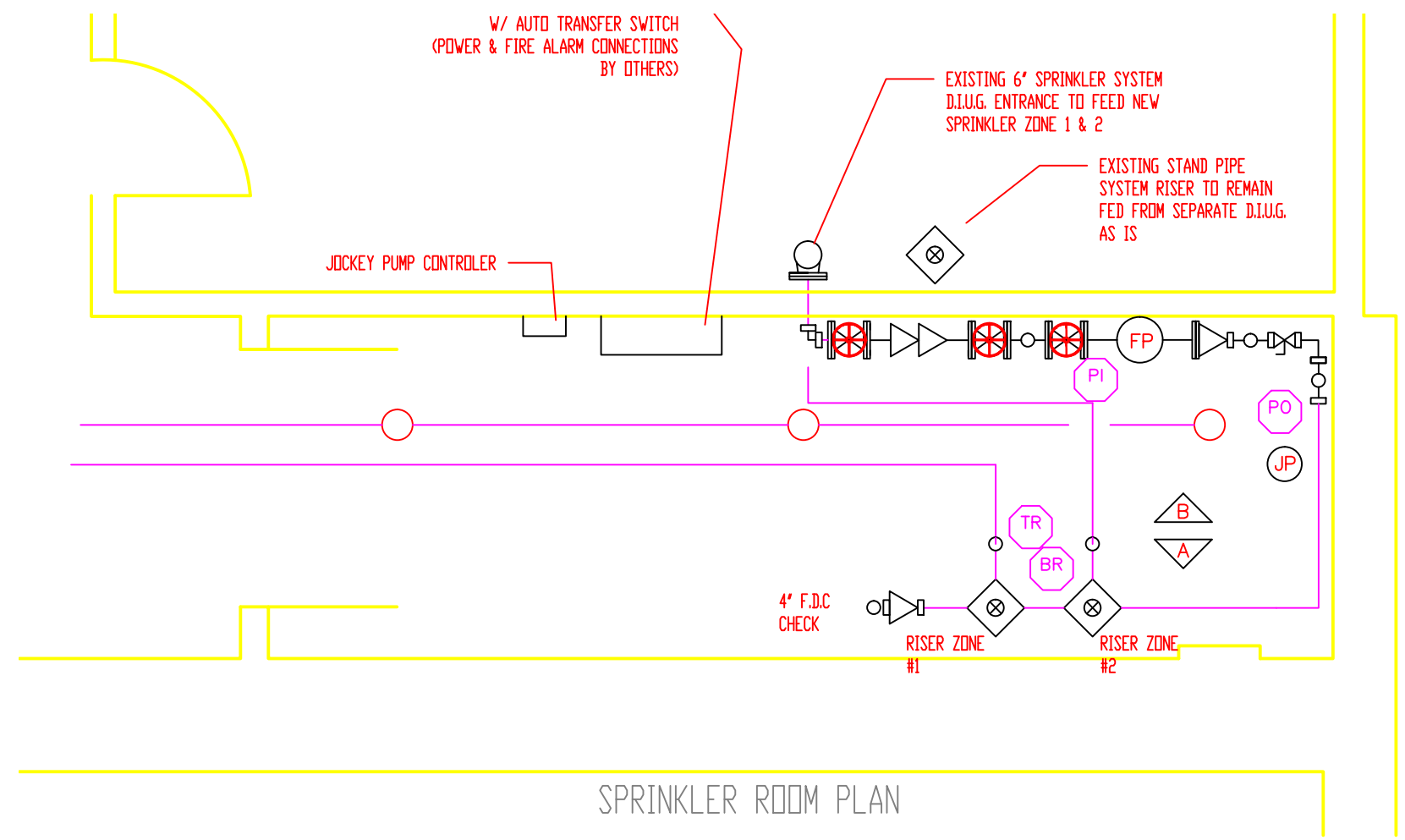
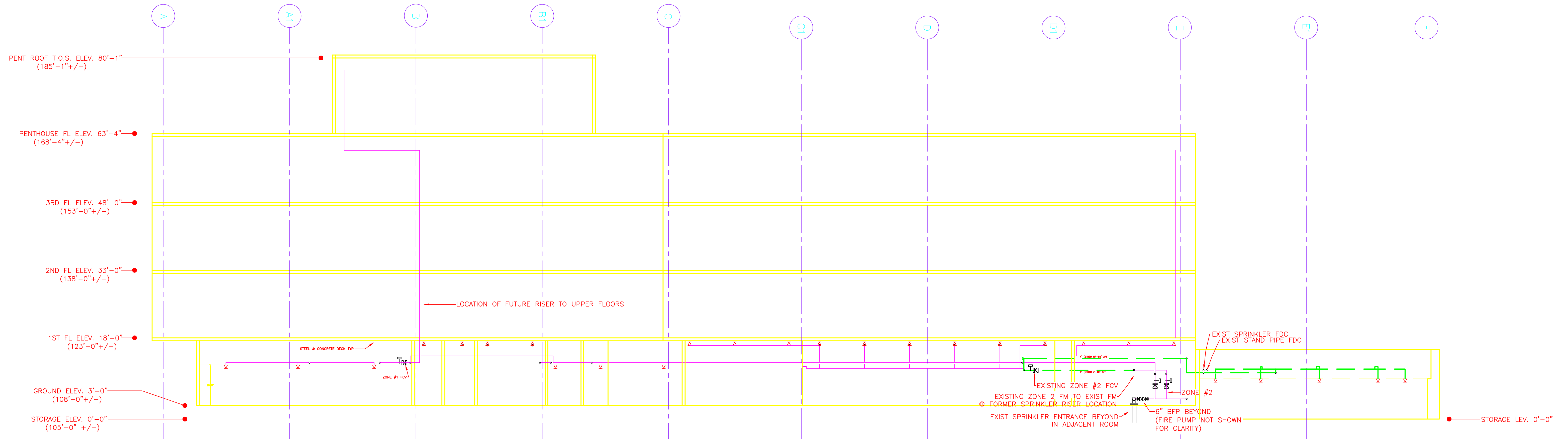
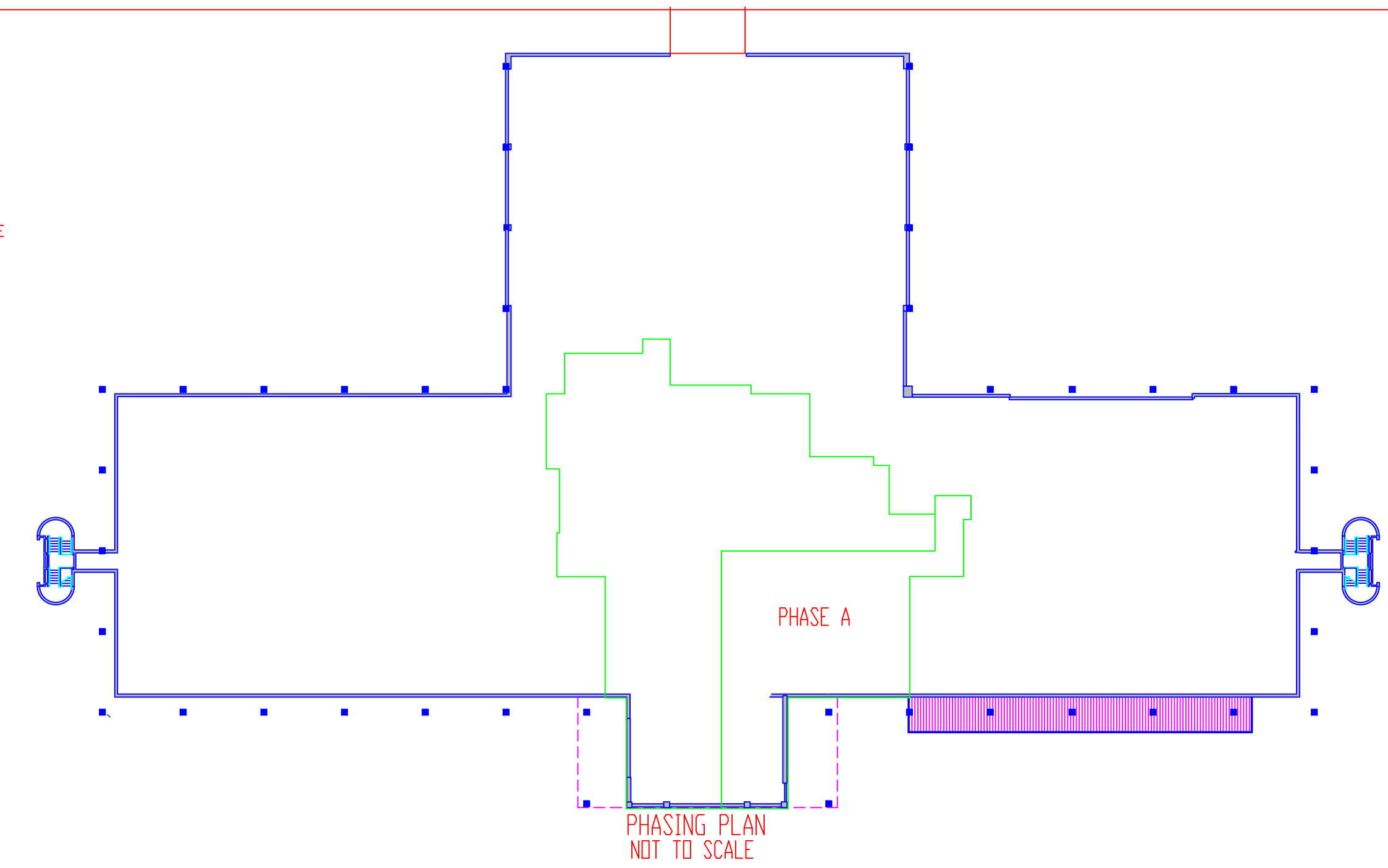
A WET PIPE HYDRAULICALLY CALCULATED SPRINKLER SYSTEM TO BE INSTALLED IN INDICATED AREAS OF THE BUILDING TO MEET NFPA, STATE OF MAINE, AND CITY OF SOUTH PORTLAND CODES. AREAS BEYOND WORK ASSOCIATED WITH CONTRACT TO BE FULLY SPRINKLED IN FUTURE AS AGREED BETWEEN OWNER AND AUTHORITIES HAVING JURISDICTION. SYSTEM MAINS TO BE SIZED TO ACCOMMODATE FUTURE EXPANSION. EACH FLOOR LEVEL SHALL UTILIZE FLOOR CONTROL STATIONS LOCATED IN COMMON AREAS ABOVE ATC. FLOOR CONTROL STATIONS SHALL BE FED FROM EXISTING ZONE CONTROL RISER VIA FEED MAIN.

SYSTEM IS DESIGNED TO MEET NFPA 13 FOR LIGHT HAZARD IN ALL AREAS EXCEPT AS FOLLOWS:
 FACILITIES SHOP IS CLASSIFIED AS ORDINARY HAZARD GROUP II
 MECHANICAL EQUIPMENT ROOMS - ORDINARY HAZARD GROUP I

ALL HANGER SPACING AND SIZING TO CONFORM TO NFPA 13.

GENERAL NOTES

ALL DIMENSIONS ARE CENTER TO CENTER UNLESS NOTED OTHERWISE.
 ALL SCH. 40 BLACK STEEL PIPE IS THREADED WITH CIB STANDARD WEIGHT FITTINGS.
 ALL SCH. 10 BLACK STEEL PIPE IS ROLL GROOVED WITH DUCTILE GROOVED FITTINGS.
 EXISTING STANDPIPE SYSTEM TO REMAIN AS IS.



		DANA A. STEWART NICET IV - #064544		DRAWING TITLE: SPRINKLER LAYOUT DETAIL PLAN		SUBMITTAL NO. OF SPRINKLERS SHOWN ON THIS SHEET 0	
APPROVED BY: _____ DATE: _____		SURVEYED BY: SEC DRAWN BY: SEC 2/11/15		JOB: 2014 UNUM-HOI Interior Renovations PORTLAND, MAINE		NO. OF SPRINKLERS ON JOB 174	
REVISIONS: _____ DATE: _____		CHECKED BY: DAS AT DEAN & ALLYN, INC		CONTRACT WITH: Consigli Construction		CONTRACT NO. C151248	
(C) SUBMIT FOR APPROVAL 2/19/15		SCALE AS NOTED		SHEET NO. 1 OF 4			