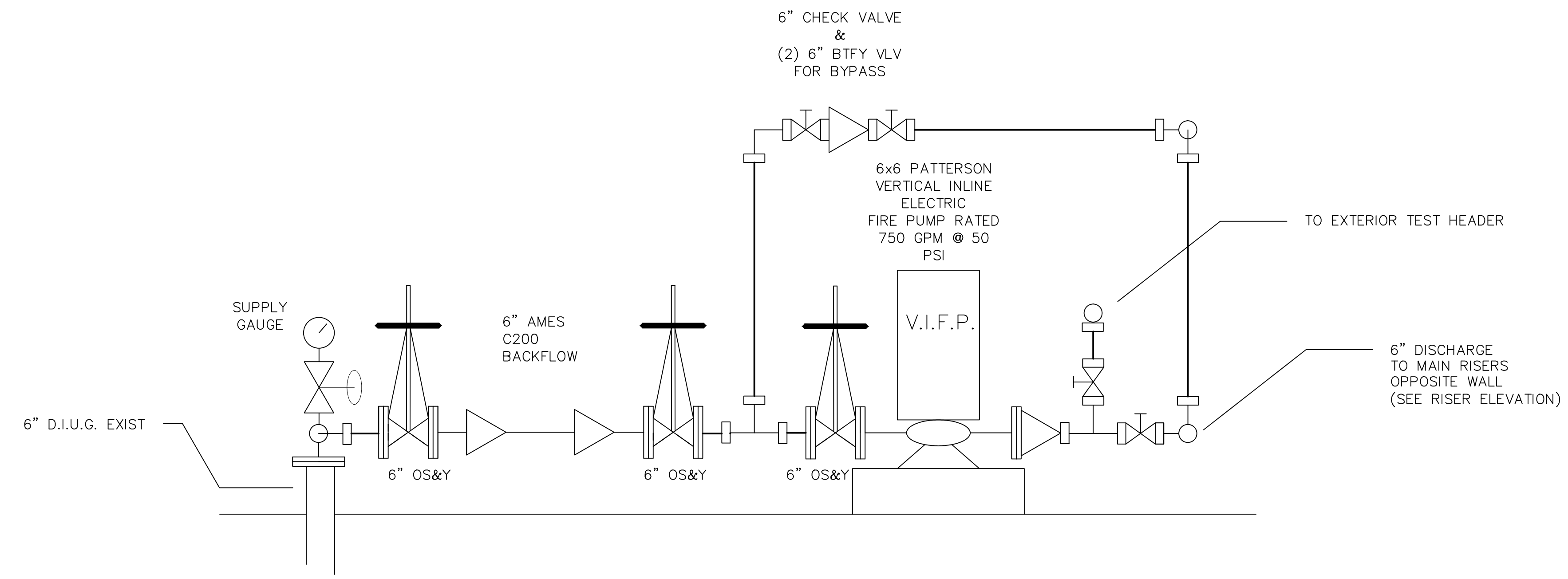
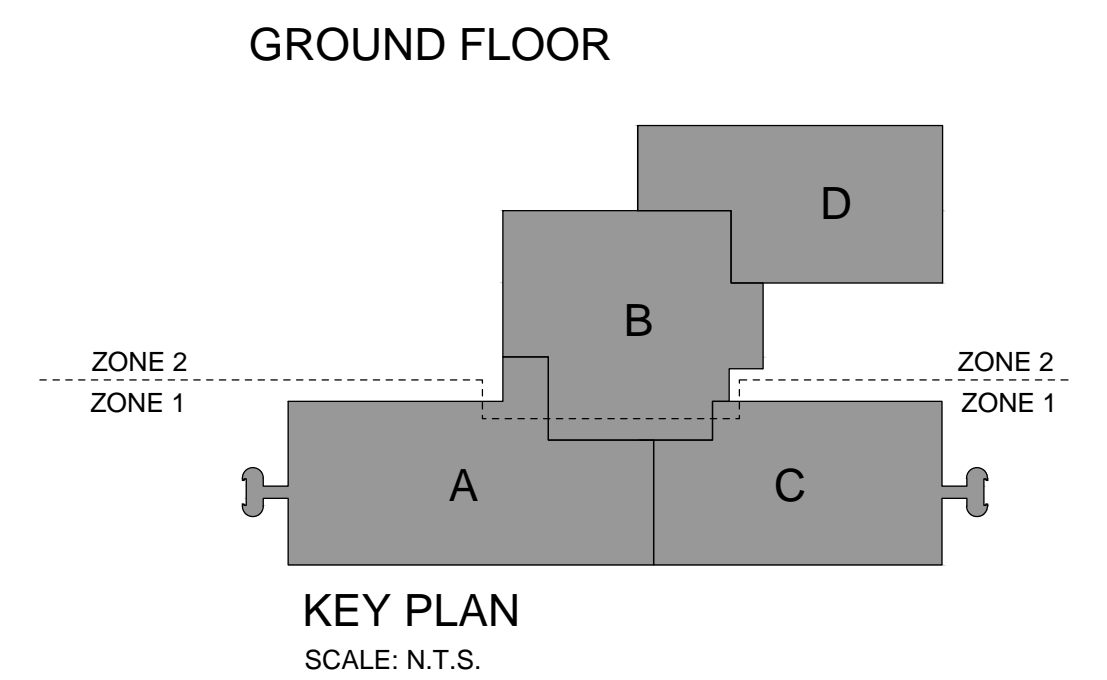
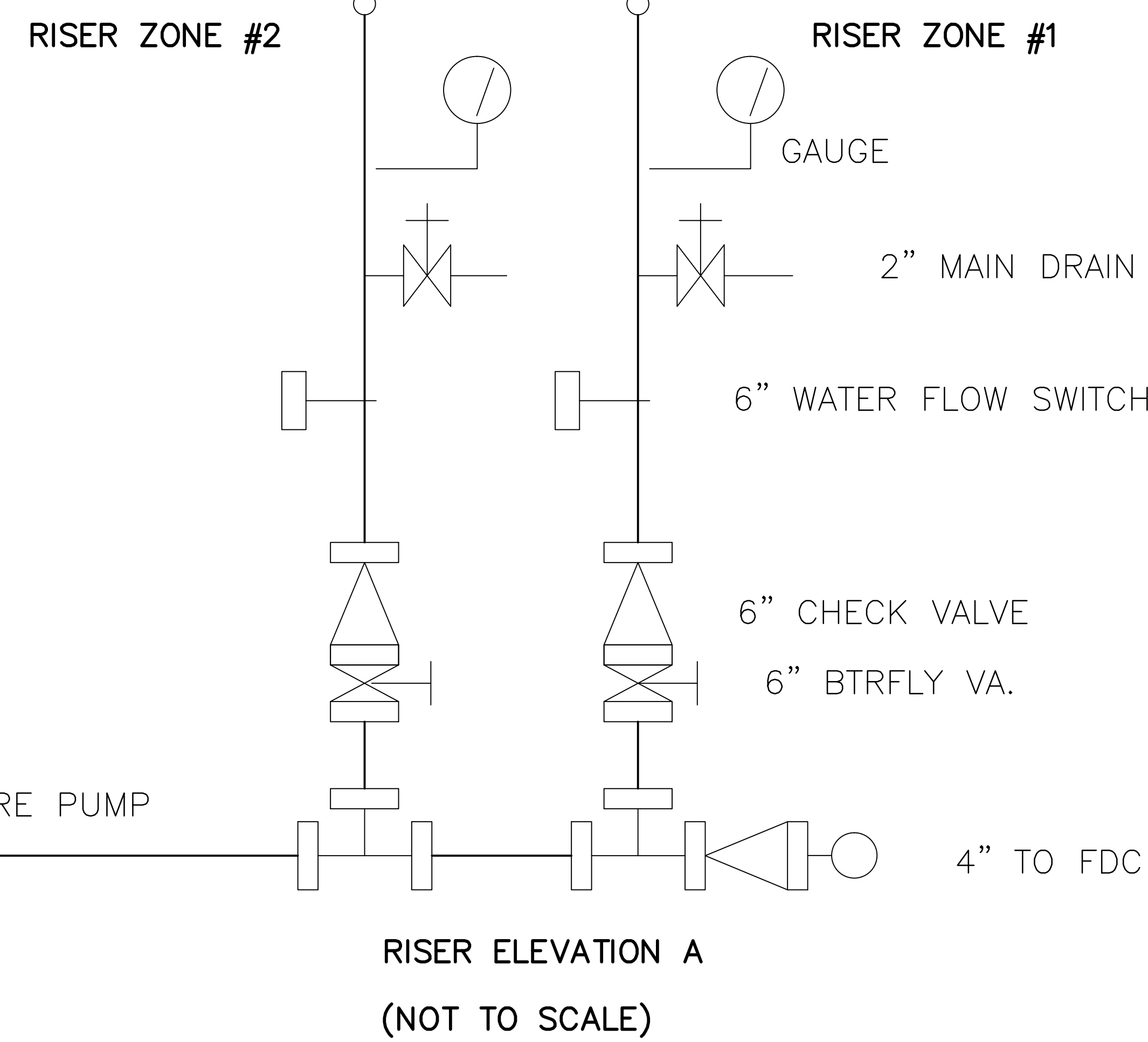
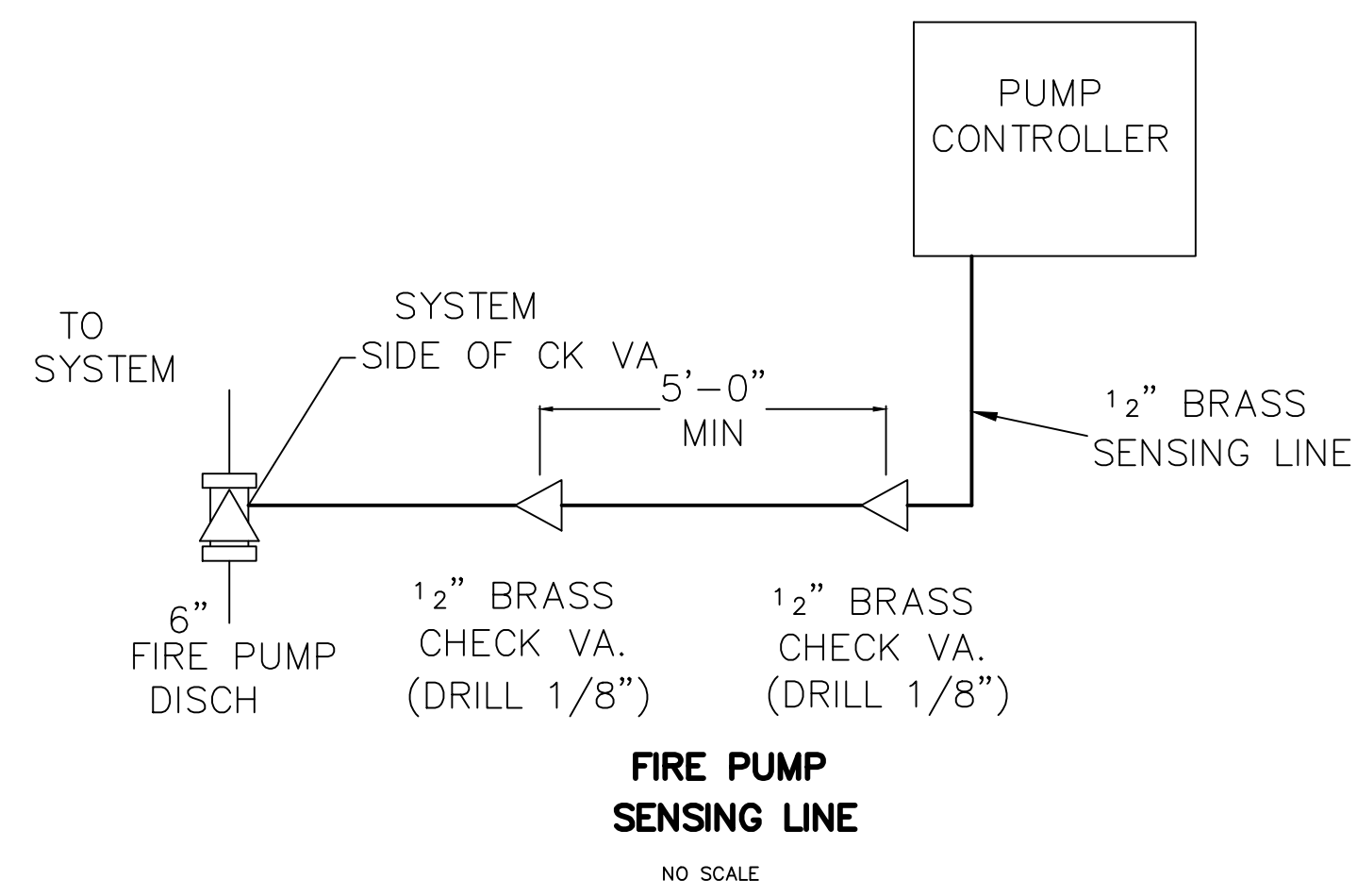
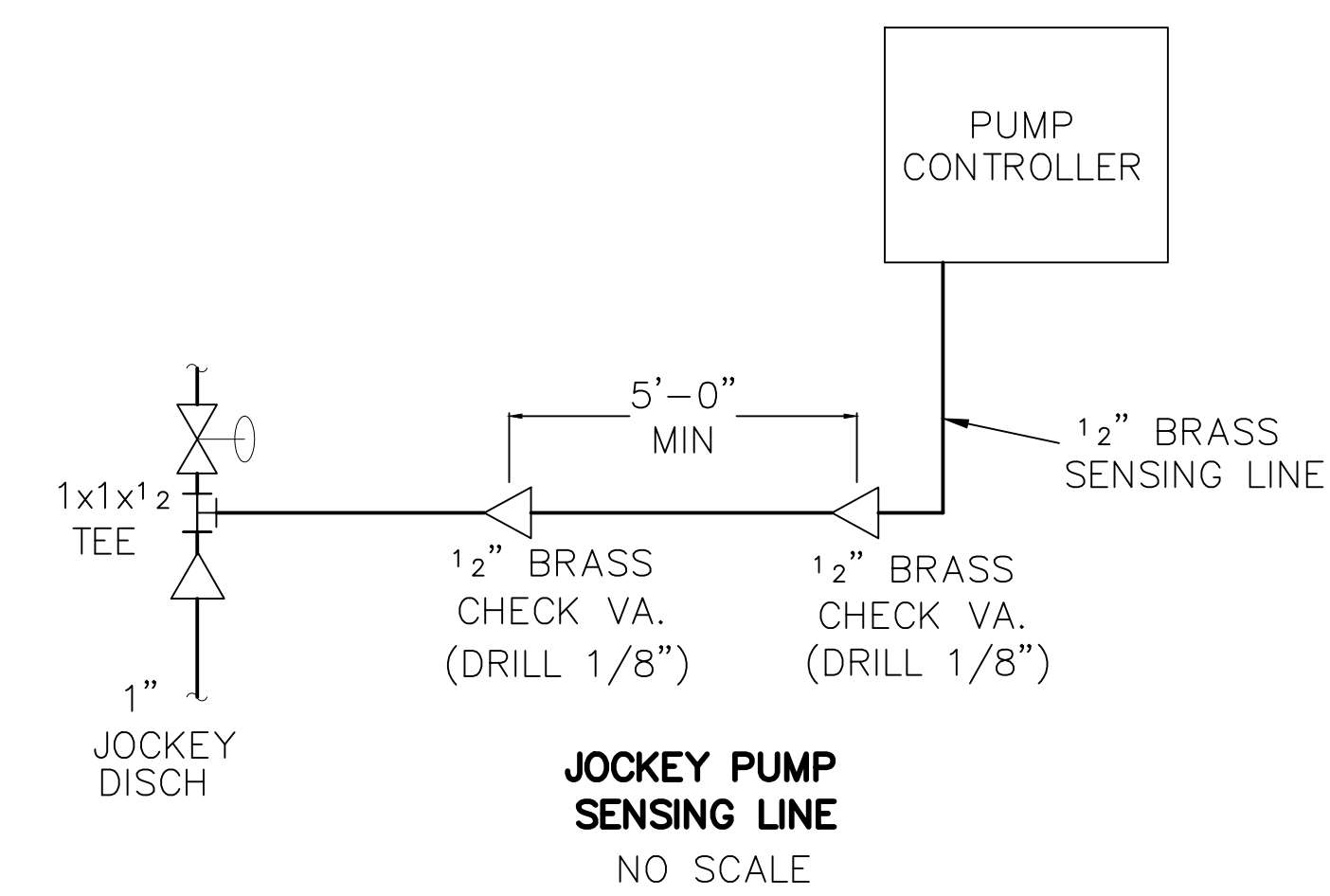


SPRINKLER ROOM PLAN

SCALE : 1/2" = 1'-0"



FIRE PUMP/BYPASS ELEVATION B  
(NOT TO SCALE)



**LEGEND**

- 155' QUICK RESPONSE BRASS UPRIGHT SPRINKLER
- ⊙ 155' QUICK RESPONSE BRASS UPRIGHT SPRINKLER ON A 1" SPRIG UP
- ⊙ 200' QUICK RESPONSE BRASS UPRIGHT SPRINKLER
- ⊙ 155' QUICK RESPONSE WHITE PENDENT SPRINKLER
- ⊙ 155' QUICK RESPONSE WHITE HORIZONTAL SIDEWALL SPRINKLER
- ⊙ 155' QUICK RESPONSE BRASS DRY PENDENT SPRINKLER
- ⊙ 155' QUICK RESPONSE BRASS DRY SIDEWALL SPRINKLER
- OPEN BRASS PENDENT SPRINKLER
- FF k=XX FIN FLR TO CENTERLINE OF PIPE
- BF k=XX BOTTOM OF ROOF PURLIN TO CENTERLINE OF PIPE
- BJ k=XX BOTTOM OF JOISTS TO CENTERLINE OF PIPE
- C k=XX FINISHED CEILING TO CENTERLINE OF PIPE
- BST k=XX BOTTOM OF STEEL PORTION OF ROOF TRUSS TO CENTERLINE OF PIPE
- GROOVED PIPE COUPLING
- RISE OR DROP NIPPLE
- RISE OR DROP BETWEEN FLOORS
- ⊙ HYDRAULIC REFERENCE POINT
- X-X PIPE SIZE AND LENGTH
- M-XX LINE OR MAIN NUMBER

34 RELIABLE QR F1FR56  
155' WHITE SEM REC PENDENTS  
1/2" X 1/2" K=5.6

11 RELIABLE QR F1FR42  
155' WHITE/BRASS HORIZONTAL SIDEWALLS  
1/2" X 1/2" K=5.6

160 RELIABLE QR F1FR56  
155' BRASS UPRIGHTS  
1/2" X 1/2" K=5.6

3 RELIABLE QR F1FR56  
200' BRASS UPRIGHTS  
1/2" X 1/2" K=5.6

52 RELIABLE QR F1FR56  
155' WHITE SEM REC PENDENTS  
1/2" X 1/2" K=5.6

19 RELIABLE SR GFR VELO-ECH  
165' WHITE SEM REC PENDENTS  
EXTENDED COVERAGE ORDINARY HAZARD  
3/4" X 3/4" K=14

167 RELIABLE QR J112  
155' WHITE SEM REC PENDENTS  
EXTENDED COVERAGE LIGHT HAZARD  
3/4" X 3/4" K=11.2

**SYSTEM CLASSIFICATION**

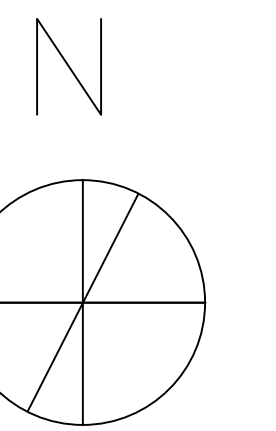
A WET PIPE HYDRAULICALLY CALCULATED SPRINKLER SYSTEM TO BE INSTALLED IN ALL AREAS OF THE GROUND FLOOR ONLY TO MEET NFPA, STATE OF MAINE, AND CITY OF PORTLAND CODES. UPPER FLOORS TO BE FULLY SPRINKLERED IN FUTURE AS AGREED BETWEEN OWNER AND AUTHORITIES HAVING JURISDICTION. SYSTEM MAINS TO BE SIZED TO ACCOMMODATE FUTURE EXPANSION TO THE GROUND LEVEL SHALL BE DIVIDED INTO TWO SEPARATE ZONES OF SPRINKLERS, AS WILL THE UPPER FLOORS AS THE SYSTEM IS EXTENDED IN FUTURE TO UPPER LEVELS PER OWNERS SCHEDULE. EACH FLOOR LEVEL SHALL UTILIZE FLOOR CONTROL STATIONS LOCATED IN COMMON AREAS ABOVE ATC. FLOOR CONTROL STATIONS SHALL BE FED FROM CORRESPONDING ZONE CONTROL RISERS VIA FEED MAIN. ZONE CONTROL VALVES FOR EACH OF THE TWO ZONES SHALL BE LOCATED IN DEDICATED SPRINKLER ROOM ON GROUND LEVEL. WATER SUPPLY TO BE FROM NEW ELECTRIC FIRE PUMP RATED MINIMUM 750GPM AT 50PSI TAKING SUCTION FROM 6" UNDERGROUND FEED MAIN TIED TO 12" CITY MAIN AT STREET. FIRE PUMP SUPPLIES SPRINKLER SYSTEM ONLY AND IS SIZED FOR MOST DEMANDING SPRINKLER DESIGN FLOW (EH GP 1) FIRE PUMP SHALL BE EQUIPPED WITH AUTO TRANSFER SWITCH CONNECTED TO BUILDING GENERATOR

SYSTEM IS DESIGNED TO MEET NFPA #13 FOR LIGHT HAZARD IN ALL AREAS EXCEPT AS FOLLOWS:  
FACILITIES SHOP IS CLASSIFIED AS ORDINARY HAZARD GROUP II  
STORAGE AREAS CLASSIFIED AS ORDINARY HAZARD GROUP II WITH TOP OF STORAGE HEIGHT LESS THAN TWELVE FEET PER NFPA 13-2010 TABLE 13.2.1  
HIGH DENSITY FILE STORAGE CONSISTS OF COMPACT MOBILE SHELVING LESS THAN EIGHT FEET IN HEIGHT MEETING THE REQUIREMENTS OF NFPA 13 2010 SEC 20.6 AND MAY BE CLASSIFIED AS LIGHT HAZARD.  
PC/PRINTER STORAGE CLASSIFIED AS EXTRA HAZARD I WITH MAX STORAGE HEIGHT 8' OR LESS PER NFPA-13 2010 TABLE 13.2.1 FOR GROUP A PLASTICS IN CARTONS.  
FORM STORAGE & PRINT DISTRIBUTION AREA - ORDINARY HAZARD GROUP II  
LOADING DOCK/RECEIVING AREA - ORDINARY HAZARD GROUP II  
MECHANICAL EQUIPMENT ROOMS - ORDINARY HAZARD GROUP I

ALL HANGER SPACING AND SIZES TO CONFORM TO NFPA #13. FLOORS ABOVE.

**GENERAL NOTES**

ALL DIMENSIONS ARE CENTER TO CENTER U/N  
ALL SCH. 40 BLACK STEEL PIPE IS THREADED WITH CIB STANDARD WEIGHT FITTINGS  
ALL SCH. 10 BLACK STEEL PIPE IS ROLL GROOVED WITH DUCTILE GROOVED FITTINGS  
EXISTING STANDPIPE SYSTEM TO REMAIN AS IS



**DEAN & ALLYN, INC.**  
FIRE PROTECTION - SPECIAL HAZARD

PO BOX 709, GRAY, MAINE 04039  
(207)657-5646 FAX:(207)657-5647

**SPRINKLER / FIRE PUMP ROOM PLAN  
AREA B**

|                  |                 |          |             |                   |          |       |   |
|------------------|-----------------|----------|-------------|-------------------|----------|-------|---|
| SHEET NO. 7 OF 7 | APPROVED BY     | DATE     | SURVEYED BY | DAN               | 01/15/13 | TITLE | NO. OF NEW SPRINKLERS SHOWN ON THIS SHEET |
| ///              | ///             | ///      | DRAWN BY    | DAN               | 04/29/13 |       | 0   |
| ///              | PERMIT          | 04/29/13 | CHECKED BY  | TEC               | 04/29/13 |       | NO. OF NEW SPRINKLERS ON                  |
| ///              | APPROVAL REVIEW | 02/12/12 | AT          | DEAN & ALLYN, INC |          |       | 446                                       |
| ///              | DRAFT REVIEW    | 01/22/12 | SCALE       | AS NOTED          |          |       | CONTRACT NO.                              |
| ///              | REVISIONS       | DATE     |             |                   |          |       | C121125                                   |

**UNUM BUILDING HQ1**  
2211 CONGRESS STREET  
PORTLAND, MAINE 04122