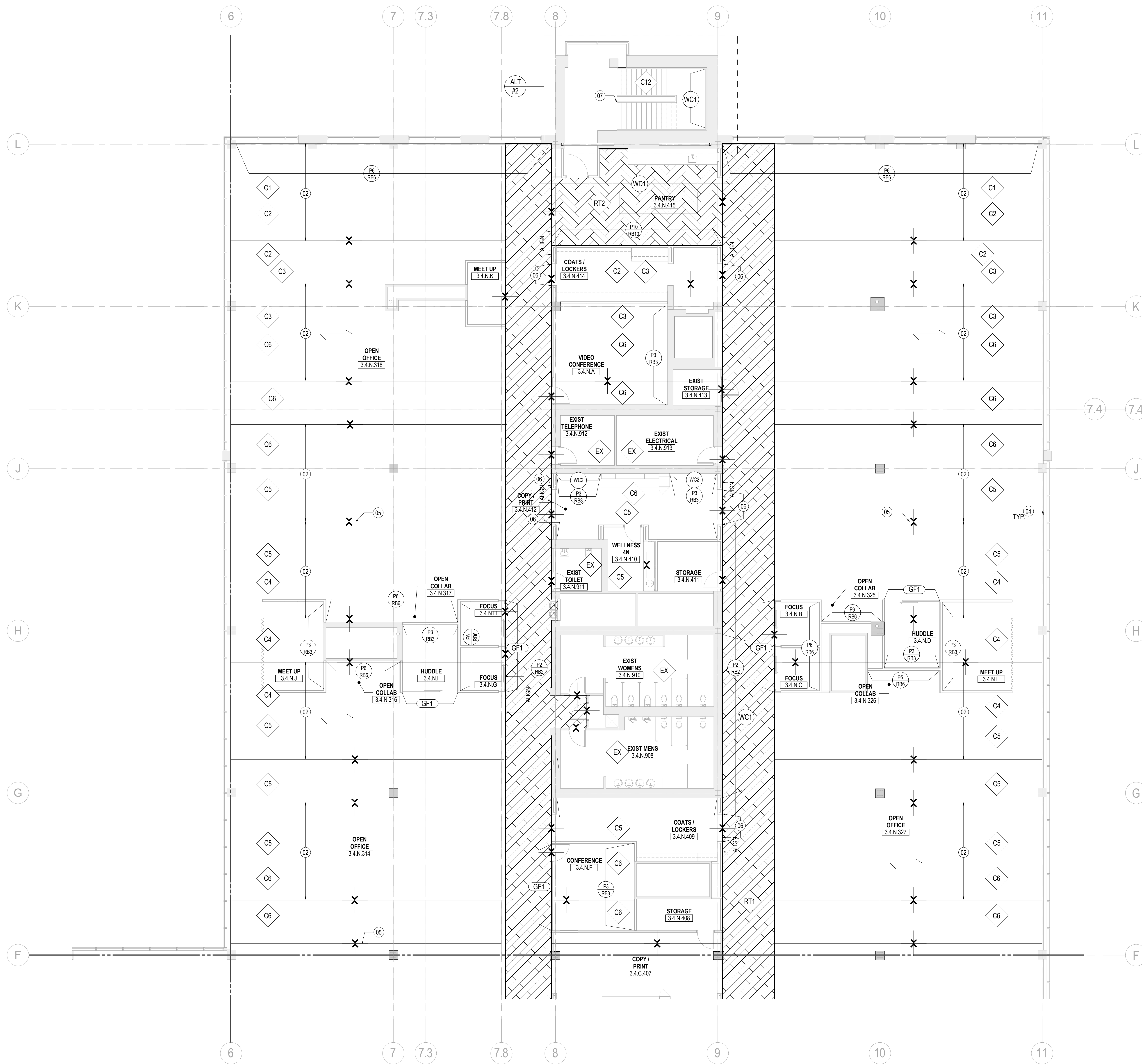


12/15/2017 2:45:23 PM I:\gms\ad\projects\Revit\Level\Access\25168591\481_003_UNUM - PORTLAND - H03_2016_251685.rvt



1 FINISH PLAN - LEVEL 04 - AREA N
SCALE: 1/8" = 1'-0"

SHEET NOTES

- 02 REFER TO DETAIL 05/A08.200 FOR CARPET TRANSITION INSTALL. CONTRACTOR TO COORDINATE ON SITE MOCKUP INSTALL OF CARPET TRANSITION FOR ARCHITECTS APPROVAL PRIOR TO INSTALLATION OF FINAL PRODUCT.
- 04 ALL EXISTING WINDOW SILLS TO BE PAINT SPRAYED SEMI-GLOSS. TYPICAL THROUGHOUT ENTIRE FLOOR PLATE.
- 05 CARPET TRANSITION TO NEW COLOR, PATTERN AND/OR COMBINATION.
- 06 GC TO PROVIDE AND INSTALL CLEAR CORNER GUARD. REFER TO SPEC ON SHEET A00.020
- 07 STAIR SCOPE ITEMS TO BE PART OF ADD SERVICE #2 PRICING.

unum
211 Congress Street
Portland, ME 04122

Gensler
214 North Tryon Street
Suite 2320
Charlotte, NC 28202
United States

Tel 704.377.2725
Fax 704.377.2807

GENERAL NOTES

- A. REFER TO SERIES A00 FOR GRAPHIC SYMBOLS, ABBREVIATIONS AND GENERAL NOTES.
- B. REFER TO SHEET A00.020 AND A00.021 FOR FINISH MATERIALS LEGEND.
- C. GENERAL CONTRACTOR TO COORDINATE EXTENT OF FINISHES WITH ELEVATIONS AND ENLARGED PLANS.
- D. ALL PARTITIONS TO RECEIVE P1 PAINT AND R01 BASE, U.N.O.
- E. GYPSUM BOARD CEILINGS AND SOFFITS TO BE PAINTED P8.
- F. ALL NEW AND EXISTING DOORS TO BE PAINT SPRAYED SEMI-GLOSS TO MATCH ADJACENT PARTITION.
- G. ALL FLOOR FINISH TRANSITIONS AT DOORS SHALL OCCUR AT CENTERLINE OF DOOR, U.N.O. REFER TO SHEET A08.200 FOR TYPICAL FLOOR FINISH TRANSITION DETAILS.
- H. ALL INTERIOR FINISHES SHALL COMPLY WITH SECTION 803 AND/OR 804 OF THE 2015 IBC.
- I. NO WALL BASE BEHIND ARCHITECTURAL MILLWORK. ALL EXPOSED PARTITIONS TO RECEIVE WALL BASE.
- J. NO CUTS ON OUTSIDE WALL CORNERS FOR RUBBER WALL BASE.
- K. TRANSITION MOCKUP OF CPT REQUIRED BEFORE INSTALLATION.

Date	Description
12/15/17	ISSUE FOR PERMIT & CONSTRUCTION

Seal / Signature

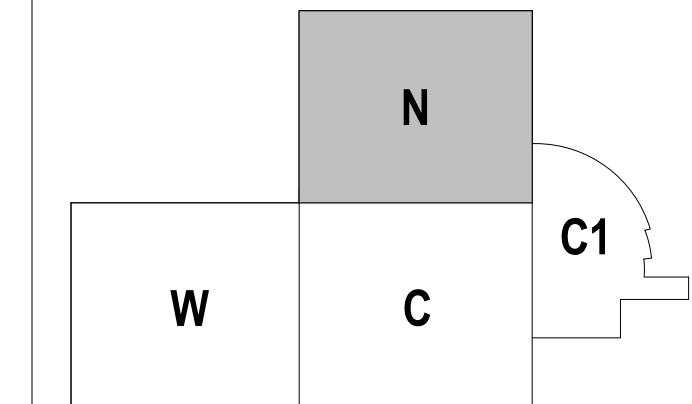


Project Name
Unum Workplace Transformation - Phase 2 & 3 (H02 & H03)

Project Number
59.6481.003

Description
FINISH PLAN - LEVEL 04 - AREA N - H03

KEY PLAN



Scale
1/8" = 1'-0"

102.114N