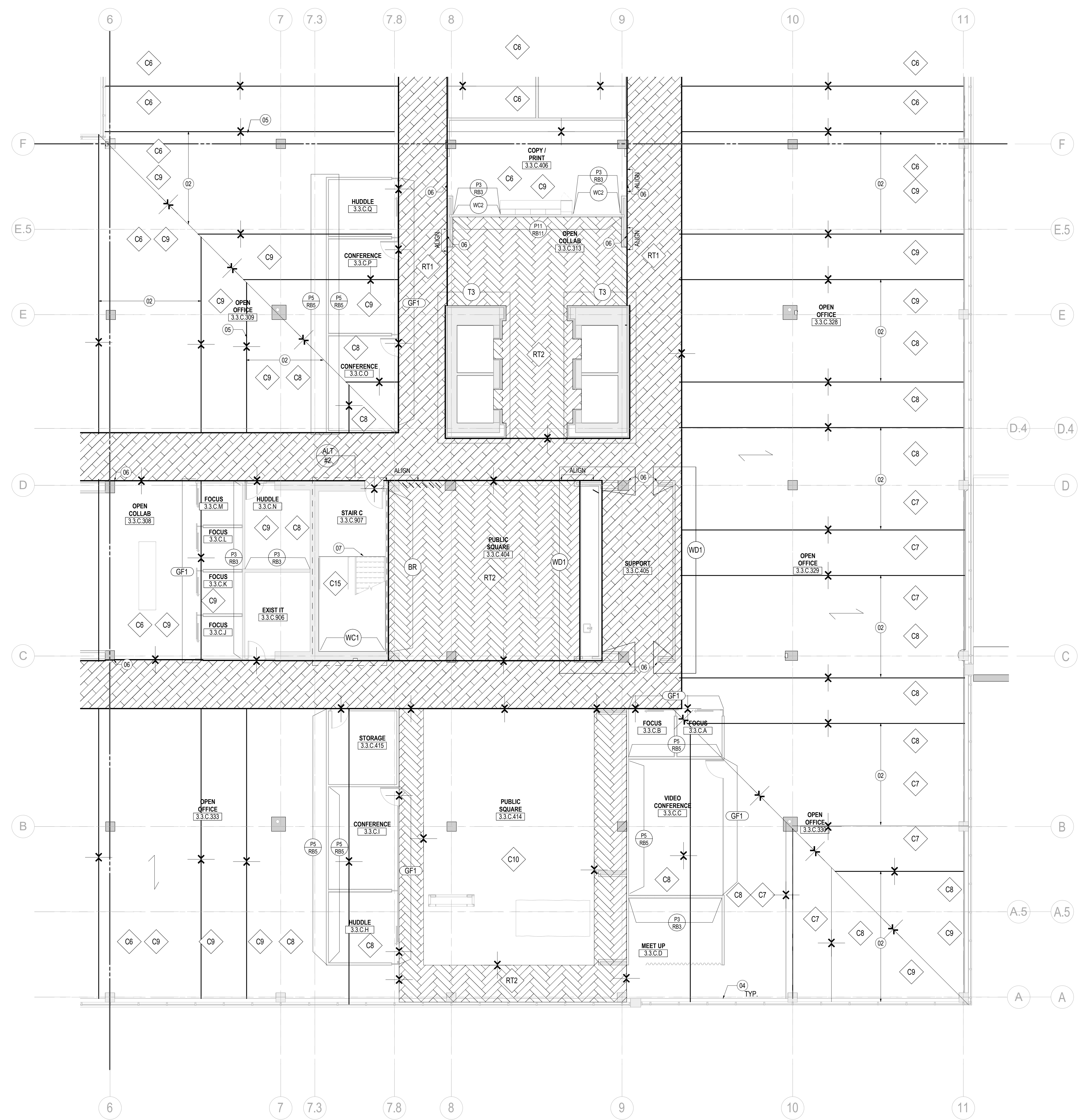


12/15/2017 2:43:44 PM \\gensler-ad-proj\projects\Revit\Level\Area\03\56859\481\003-UNUM-PORTLAND-HO3_2016_25168.rvt



1 FINISH PLAN - LEVEL 03 - AREA C
SCALE: 1/8" = 1'-0"

SHEET NOTES

- 02 REFER TO DETAIL 05/108.200 FOR CARPET TRANSITION INSTALL. CONTRACTOR TO COORDINATE ON SITE MOCKUP INSTALL OF CARPET TRANSITION FOR ARCHITECTS APPROVAL PRIOR TO INSTALLATION OF FINAL PRODUCT.
- 04 ALL EXISTING WINDOW SILLS TO BE PAINT SPRAYED SEMI-GLOSS. TYPICAL THROUGHOUT ENTIRE FLOOR PLATE.
- 05 CARPET TRANSITION TO NEW COLOR, PATTERN AND/OR COMBINATION.
- 06 GC TO PROVIDE AND INSTALL CLEAR CORNER GUARD. REFER TO SPEC ON SHEET A00.020
- 07 STAIR SCOPE ITEMS TO BE PART OF ADD SERVICE #2 PRICING.

GENERAL NOTES

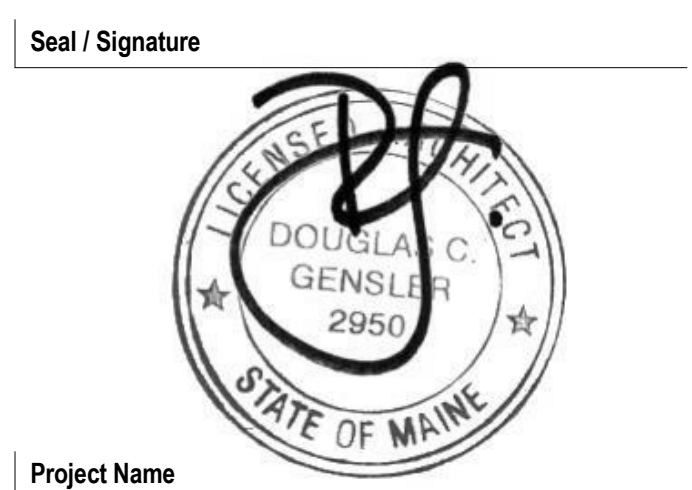
- A REFER TO SERIES A00 FOR GRAPHIC SYMBOLS, ABBREVIATIONS AND GENERAL NOTES.
- B REFER TO SHEET A00.020 AND A00.021 FOR FINISH MATERIALS LEGEND.
- C GENERAL CONTRACTOR TO COORDINATE EXTENT OF FINISHES WITH ELEVATIONS AND ENLARGED PLANS.
- D ALL PARTITIONS TO RECEIVE P1 PAINT AND R81 BASE, U.N.O.
- E GYPSUM BOARD CEILINGS AND SOFFITS TO BE PAINTED P8.
- F ALL NEW AND EXISTING DOORS TO BE PAINT SPRAYED SEMI-GLOSS TO MATCH ADJACENT PARTITION.
- G ALL FLOOR FINISH TRANSITIONS AT DOORS SHALL OCCUR AT CENTERLINE OF DOOR, U.N.O. REFER TO SHEET A00.200 FOR TYPICAL FLOOR FINISH TRANSITION DETAILS.
- H ALL INTERIOR FINISHES SHALL COMPLY WITH SECTION 803 AND/OR 804 OF THE 2015 IBC.
- I NO WALL BASE BEHIND ARCHITECTURAL MILLWORK. ALL EXPOSED PARTITIONS TO RECEIVE WALL BASE.
- J NO CUTS ON OUTSIDE WALL CORNERS FOR RUBBER WALL BASE.
- K TRANSITION MOCKUP OF CPT REQUIRED BEFORE INSTALLATION.

unum
211 Congress Street
Portland, ME 04122

Gensler
214 North Tryon Street
Suite 2320
Charlotte, NC 28202
United States

Tel 704.377.2725
Fax 704.377.2807

Date	Description
12/15/17	ISSUE FOR PERMIT & CONSTRUCTION

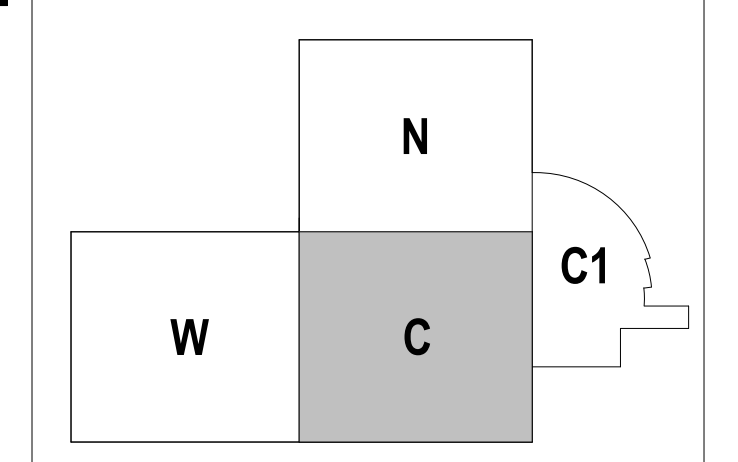


Project Name
Unum Workplace Transformation - Phase 2 & 3 (HO2 & HO3)

Project Number
59.6481.003

Description
FINISH PLAN - LEVEL 03 - AREA C - HO3

KEY PLAN



Scale
1/8" = 1'-0"

102.113C