

**1** FINISH PLAN - LEVEL 01 - AREA C1 (AMENITY)  
SCALE: 1/8" = 1'-0"

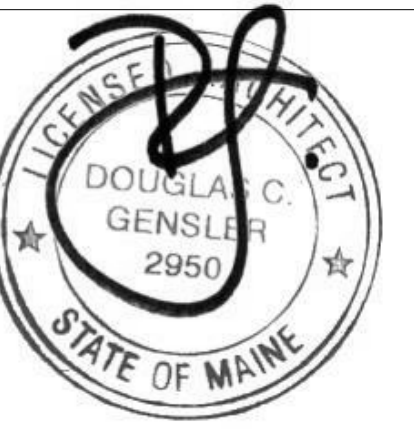
**SHEET NOTES**

**GENERAL NOTES**

- A. REFER TO SERIES A00 FOR GRAPHIC SYMBOLS, ABBREVIATIONS AND GENERAL NOTES.
- B. REFER TO SHEET A00.020 AND A00.021 FOR FINISH MATERIALS LEGEND.
- C. GENERAL CONTRACTOR TO COORDINATE EXTENT OF FINISHES WITH ELEVATIONS AND ENLARGED PLANS.
- D. ALL PARTITIONS TO RECEIVE P1 PAINT AND RB1 BASE, U.N.O.
- E. GYPSUM BOARD CEILINGS AND SOFFITS TO BE PAINTED P8.
- F. ALL NEW AND EXISTING DOORS TO BE PAINT SPRAYED SEMI-GLOSS TO MATCH ADJACENT PARTITION.
- G. ALL FLOOR FINISH TRANSITIONS AT DOORS SHALL OCCUR AT CENTERLINE OF DOOR, U.N.O. REFER TO SHEET A03.200 FOR TYPICAL FLOOR FINISH TRANSITION DETAILS.
- H. ALL INTERIOR FINISHES SHALL COMPLY WITH SECTION 803 AND/OR 804 OF THE 2015 IBC.
- I. NO WALL BASE BEHIND ARCHITECTURAL MILLWORK. ALL EXPOSED PARTITIONS TO RECEIVE WALL BASE.
- J. NO CUTS ON OUTSIDE WALL CORNERS FOR RUBBER WALL BASE.
- K. TRANSITION MOCKUP OF CPT REQUIRED BEFORE INSTALLATION.

Date	Description
12/15/17	ISSUE FOR PERMIT & CONSTRUCTION

Seal / Signature



Project Name

Unum Workplace Transformation - Phase 2 & 3 (HO2 & HO3)

Project Number

59.6481.003

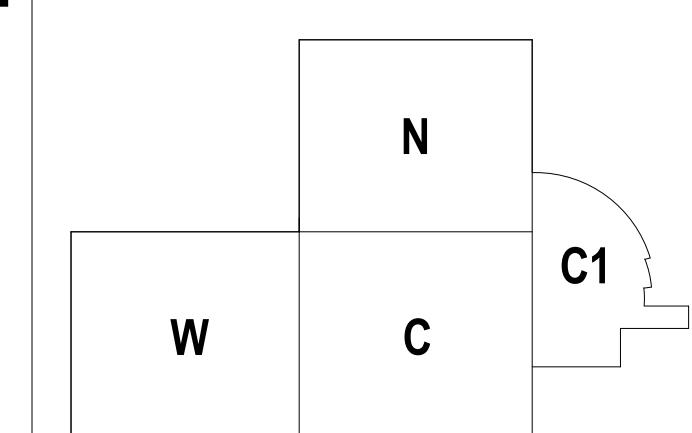
Description

FINISH PLAN - LEVEL 01 - AMENITY - H03

Scale

1/8" = 1'-0"

**KEY PLAN**



**102.111C.1**