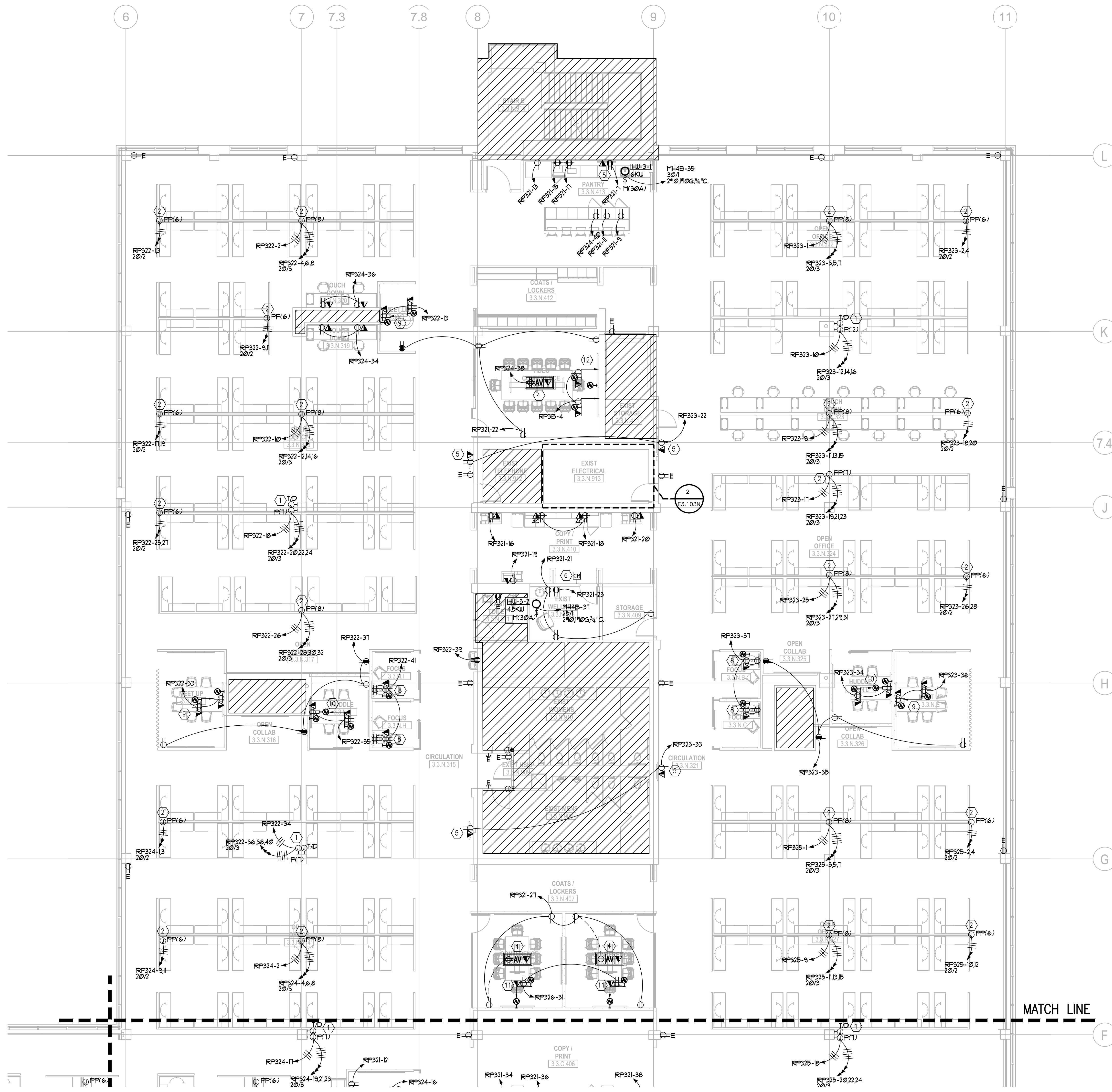


2 PARTIAL PLAN (AREA N) - ELECT RM
E3.103N 1/4"=1'-0"

GENERAL NOTES
(APPLY THIS SHEET ONLY)

- COORDINATE ALL DEVICE LOCATIONS AND MOUNTING HEIGHTS WITH THE ARCHITECT & FURNITURE VENDOR PRIOR TO INSTALLATION.
- HATCHED AREA NOT IN THIS SCOPE OF WORK.
- 'E' DENOTES EXISTING DEVICE TO REMAIN. 'R' DENOTES EXISTING DEVICE TO BE RELOCATED.
- VERIFY PROPER FUNCTIONALITY OF ALL EXISTING AND RELOCATED ELECTRICAL DEVICES, INCLUDING THEIR COVERPLATES. PROVIDE REPLACEMENTS AS REQUIRED IF ANY ARE NOT OPERATING AS INTENDED OR HAVE ABOVE NORMAL WEAR OR DEFECTS.
- ALL ABANDONED AND UNUSED JUNCTION BOXES, BOXES WITH BLANK COVERPLATES, AND DATA OUTLET LOCATIONS NOT SHOWN ON THIS PLAN ARE TO BE DEMO'D. PATCH ANY EXISTING TO REMAIN WALLS TO A LIKE NEW CONDITION. ANY RECEPTACLE, WITHIN THE SCOPE OF WORK AREA, NOT SHOWN TO REMAIN SHALL BE REMOVED. ALL ASSOCIATED CONDUIT AND WIRING SHALL BE REMOVED BACK TO ITS SOURCE.
- DEDICATED OUTLETS SHALL BE 20A RATED, U.N.O.
- A 3+1 WIRING CONFIGURATION HAS BEEN ASSUMED FOR THE MODULAR FURNITURE. NO ISOLATED GROUND (IG) RECEPTACLE PROVISIONS HAVE BEEN PROVIDED. IF A DIFFERENT CONNECTION IS REQUIRED PLEASE NOTIFY ENGINEER AND ARCHITECT AS SOON AS POSSIBLE. THE BRANCH CIRCUIT BREAKER CONFIGURATIONS WOULD NEED TO BE REVISED TO MATCH.
- COORDINATE ALL CORE DRILL LOCATIONS THROUGH SLAB WITH THE ARCHITECT AND LANDLORD PRIOR TO DRILLING. FOR ANY SLAB WITH POST-TENSION CABLING A SCAN SHALL BE PROVIDED TO LOCATED ANY OBSTRUCTIONS.
- RECEPTACLES SHALL BE INSTALLED PER ANSI A117.1.
- LABEL ALL OUTLETS, DEVICES, POWER POLES, JUNCTION BOXES, ETC., WITH THE CORRESPONDING CIRCUIT DESIGNATION. LABEL TO BE TYPEWRITTEN; BLACK LETTERS ON WHITE BACKGROUND.
- CIRCUIT HOMERUN DESIGNATIONS ARE NOTED FOR DESIGN INTENT ONLY BASED ON FIELD OBSERVATIONS OF EXISTING PANEL SCHEDULES, WHERE AVAILABLE. CONTRACTOR TO CONFIRM ALL SPARE CIRCUIT BREAKERS AND THOSE MADE AVAILABLE DUE TO DEMOLITION.
- PROVIDE PULL STRINGS FOR ALL EMPTY CONDUIT. EACH NON-TERMINATED CONDUIT END SHALL BE PROVIDED WITH A BUSHING.
- DIVISION 26 CONTRACTOR SHALL COORDINATE WITH DIVISION 23 TO MAKE SURE RETURN AIR OPENINGS ARE KEPT CLEAR OF ANY CONDUITS.
- ALL RECEPTACLES WITHIN 6'-0" OF ANY WATER SOURCE SHALL BE 'GFCI' TYPE.
- REFER TO THE AUDIOVISUAL CONSULTANT'S (CMS) COORDINATION SET FOR ADDITIONAL INFORMATION, DETAILS, ETC., RELATED TO ALL ROOMS CONTAINING A/V EQUIPMENT.



1 3RD FLOOR PLAN (AREA N) - ELECTRICAL
E3.103C 1/8"=1'-0"