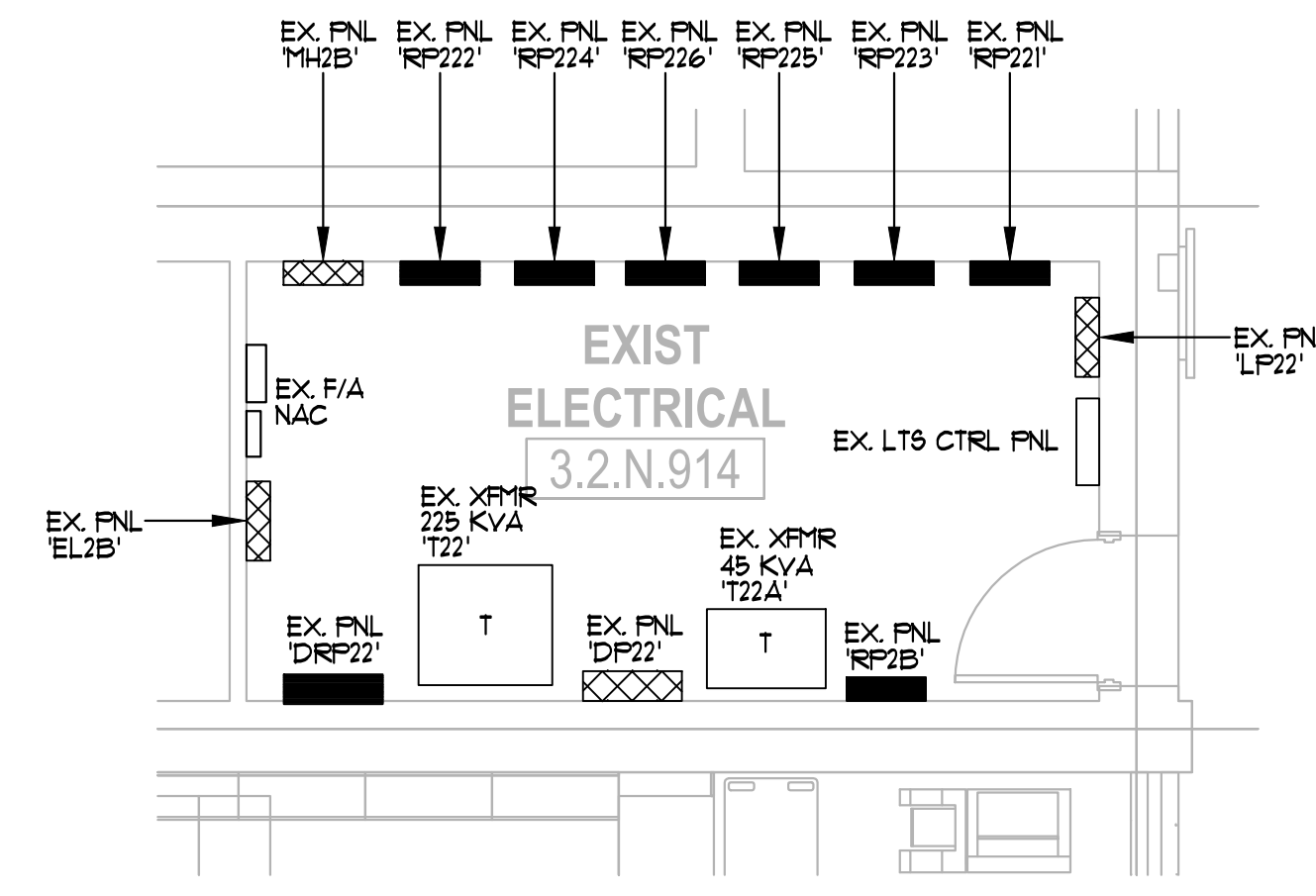


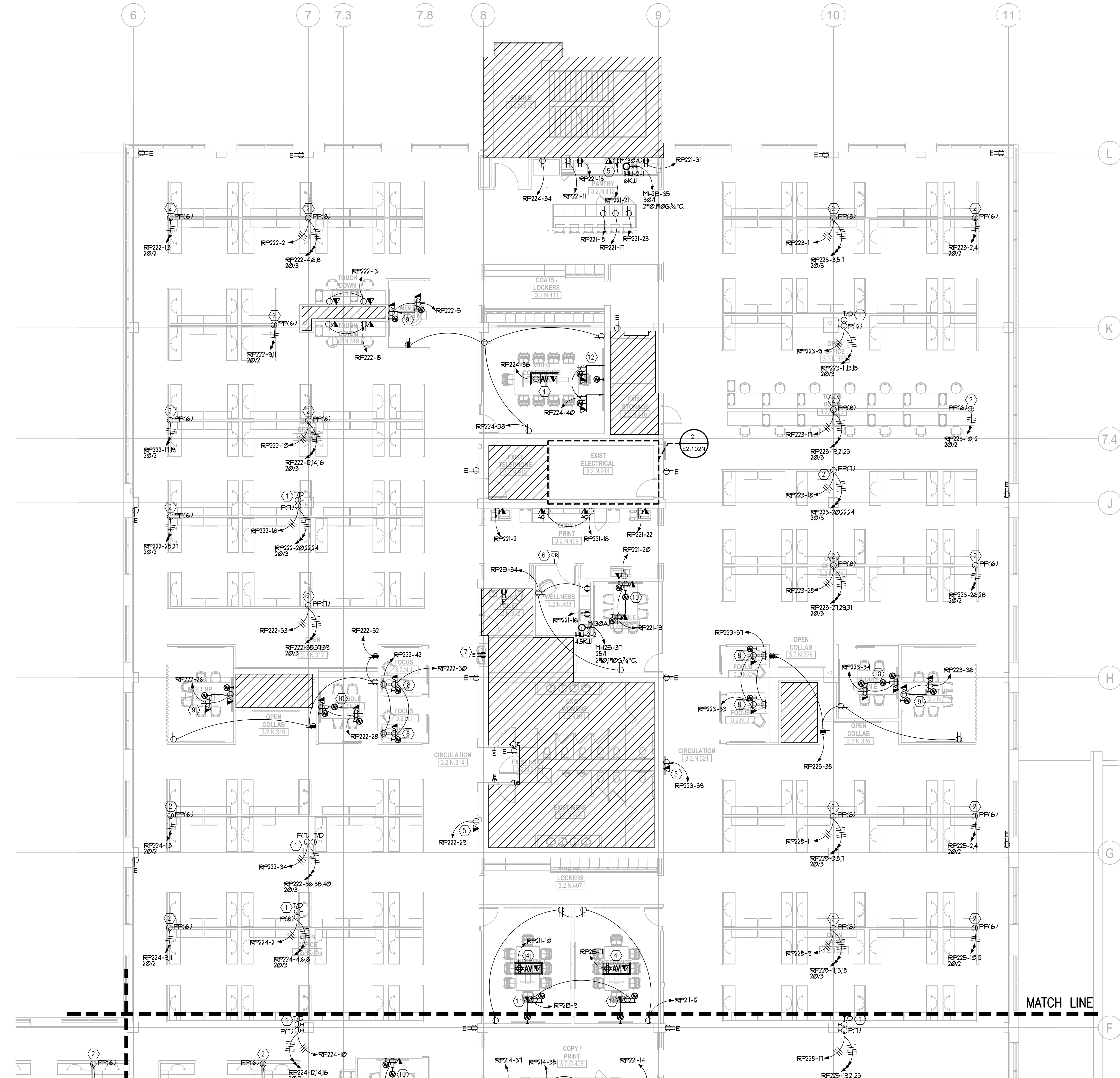
LEGEND NOTES:
(APPLY THIS SHEET ONLY)

- 1 BASEFEEED LOCATION. PROVIDE (1)-1/2" EMPTY CONDUIT TO ABOVE ACCESSIBLE CEILING FOR LOW-VOLTAGE CABLING. PROVIDE HARDWIRED CONNECTION SHOWN TO WHIP AND UTILIZE STEEL 90° STRAIN RELIEF CORD CONNECTOR WITH FACE PLATE TO DIRECT CABLE TO FLOOR ALLOWING FOR CLOSE PLACEMENT OF FURNITURE SYSTEM.
- 2 POWER POLE LOCATION AT MODULAR FURNITURE. PROVIDE HARDWIRED CONNECTION TO WHIP. COORDINATE EXACT LOCATION WITH FURNITURE VENDOR.
- 3 FLOOR BOX LOCATION. PROVIDE CONNECTIC IN-CARPET WIREWAY SYSTEM WITH ALUMINUM WIREWAY & COVER, SIDE RAMP, END TRANSITION RAMP, WALL ROUGH-IN BOX, AND MODULE FOR DUPLEX, TELE/DATA, & A/V AS REQUIRED. ADDITIONAL DEVICES MAY BE NEEDED TO COMPLETE THE SYSTEM. DEVICES CAN BE ADDED TO THE SAME LENGTH OF TRAC IN A CONTINUOUS RUN. (PS-A-480) APPROXIMATE ROUTING ACROSS FLOOR SHOWN. VERIFY FINISHES WITH ARCHITECT.
- 4 POKE-THRU LOCATION. PROVIDE A WIRMSOLD XXXX SERIES DEVICE WITH QUAD RECEPTACLE AND CENTER DEVICE PLATE FOR TELE/DATA & A/V AS REQUIRED BY LOW-VOLTAGE VENDOR. ROUTE (1)-1/2" E.C. TO THE A/V JUNCTION BOX BEHIND THE ROOM'S LCD SCREEN.
- 5 PUBLIC DISPLAY LOCATION. PROVIDE DUPLEX RECEPTACLE AND DATA. HEIGHT IS TO BE DETERMINED. ROUTE (1)-3/4" E.C. FROM THE TELE/DATA J-BOX TO THE ACCESSIBLE CEILING SPACE ABOVE.
- 6 CARD READER LOCATION. PROVIDE JUNCTION BOX AND 3" CONDUIT STUBBED UP TO ACCESSIBLE CEILING ON REVERSE SIDE OF WALL. PROVIDE ALL REQUIRED CONNECTIONS/PROVISIONS FOR ELECTRIC DOOR STRIKE, MOTION SENSOR RELEASE, ETC... AS REQUIRED BY SECURITY VENDOR.
- 7 EXISTING ELECTRIC WATER COOLER/ DRINKING FOUNTAIN BEING REPLACED WITH NEW. UTILIZE EXISTING CIRCUIT/RECEPTACLE FOR RE-CONNECTION. IF OUTLET IS NOT GFCI TYPE, PROVIDE ONE. IF HARDWIRED CONNECTION IS EXISTING MAKE SURE EXISTING BREAKER IS GFCI TYPE. IF NOT, PROVIDE NEW.
- 8 EODUS ROOM:
 - SIDE OF LCD SCREEN LOCATION - PROVIDE A 2-GANG J-BOX FOR A/V CABLING WITH A QUAD RECEPTACLE AND TELE/DATA OUTLET BESIDE THE SCREEN. ROUTE (1)-3/4" E.C. FROM THE TELE/DATA J-BOX AND (1)-1/2" E.C. FROM THE A/V J-BOX TO THE ACCESSIBLE CEILING SPACE ABOVE.
 - BELOW TABLE LOCATION - PROVIDE A QUAD DUPLEX, MOUNTED AT 18" A.F.F.
 - ** REFER TO DETAIL L/AV.301.00 FOR FURTHER DETAILS. **
- 9 MEET-UP ROOM:
 - LCD SCREEN LOCATION - PROVIDE A 2-GANG J-BOX FOR A/V CABLING WITH A QUAD RECEPTACLE AND TELE/DATA OUTLET BEHIND THE SCREEN. ROUTE (1)-3/4" E.C. FROM THE TELE/DATA J-BOX AND (1)-1/2" E.C. FROM THE A/V J-BOX TO THE ACCESSIBLE CEILING SPACE ABOVE.
 - A/V WALL INPUT BELOW TABLE - PROVIDE 2-GANG J-BOX FOR A/V CABLING WITH A QUAD RECEPTACLE AND TELE/DATA MOUNTED AT 18" A.F.F. FOR A/V CABLING. ROUTE (1)-1/2" E.C. TO THE LCD SCREEN A/V BOX ABOVE.
 - ** REFER TO DETAIL L/AV.301.00 FOR FURTHER DETAILS. **
- 10 HUDDLE ROOM:
 - LCD SCREEN LOCATION - PROVIDE A 2-GANG J-BOX FOR A/V CABLING WITH A QUAD RECEPTACLE AND TELE/DATA OUTLET BEHIND THE SCREEN. ROUTE (1)-3/4" E.C. FROM THE TELE/DATA J-BOX AND (1)-1/2" E.C. FROM THE A/V J-BOX TO THE ACCESSIBLE CEILING SPACE ABOVE.
 - CAMERA LOCATION - PROVIDE A 2-GANG J-BOX AND ROUTE (1)-1/2" E.C. TO THE LCD SCREEN A/V BOX ABOVE.
 - BELOW TABLE LOCATION - PROVIDE 2-GANG JUNCTION BOX FOR A/V CABLING WITH A QUAD RECEPTACLE AND TELE/DATA MOUNTED AT 18" A.F.F. ROUTE (1)-3/4" E.C. FROM THE TELE/DATA J-BOX AND (1)-1/2" E.C. FROM THE A/V J-BOX TO THE TABLE TO THE CAMERA A/V BOX ABOVE.
 - ** REFER TO DETAIL F/AV.301.00 FOR FURTHER DETAILS. **
- 11 CONFERENCE ROOM:
 - LCD SCREEN LOCATION - PROVIDE A CHIEF PACBOX FOR A/V CABLING WITH A DUPLEX RECEPTACLE AND TELE/DATA OUTLET MOUNTED TO THE BACKBOX. ROUTE (1)-3/4" E.C. FROM THE TELE/DATA J-BOX AND (1)-1/2" E.C. FROM THE A/V J-BOX TO THE ACCESSIBLE CEILING SPACE ABOVE.
 - CAMERA LOCATION ABOVE TABLE HEIGHT - PROVIDE A 2-GANG J-BOX AND ROUTE (1)-1/2" E.C. TO THE LCD SCREEN A/V BOX ABOVE.
 - ** REFER TO DETAIL D/AV.301.00 FOR FURTHER DETAILS. **
- 12 VIDEO CONFERENCE ROOM(A):
 - A/V CAMERA ABOVE SCREEN - PROVIDE 2-GANG JUNCTION BOX FOR A/V CABLING. ROUTE (1)-1/2" E.C. FROM THE A/V J-BOX TO THE ACCESSIBLE CEILING SPACE ABOVE.
 - LCD SCREEN LOCATION (TYP OF 2) - PROVIDE A CHIEF PACBOX FOR A/V CABLING WITH A DUPLEX RECEPTACLE AND TELE/DATA OUTLET MOUNTED TO EACH. ROUTE (1)-3/4" E.C. FROM THE TELE/DATA J-BOX AND (1)-1/2" E.C. FROM THE A/V J-BOXES AT THE SCREENS TO THE ACCESSIBLE CEILING ABOVE.
 - ** REFER TO DETAIL B/AV.301.00 FOR FURTHER DETAILS. **
- 13 VIDEO CONFERENCE ROOM(B):
 - LCD SCREEN LOCATION (TYP OF 2) - PROVIDE A CHIEF PACBOX FOR A/V CABLING WITH A DUPLEX RECEPTACLE AND TELE/DATA OUTLET MOUNTED TO EACH. ROUTE (1)-3/4" E.C. FROM THE TELE/DATA J-BOX AND (1)-1/2" E.C. FROM THE A/V J-BOX TO THE ACCESSIBLE CEILING SPACE ABOVE.
 - CAMERA LOCATION ABOVE TABLE HEIGHT - PROVIDE A 2-GANG J-BOX AND ROUTE (1)-1/2" E.C. TO THE ACCESSIBLE CEILING ABOVE.
 - ** REFER TO DETAIL H/AV.301.00 FOR FURTHER DETAILS. **
- 14 F/S DAMPER LOCATION. CONNECT F/S DAMPER TO JUNCTION BOX SHOWN ON PLANS FOR POWER.



2 PARTIAL PLAN (AREA N) - ELECT RM
E2.102N 1/4"=1'-0"

- GENERAL NOTES:
(APPLY THIS SHEET ONLY)
1. COORDINATE ALL DEVICE LOCATIONS AND MOUNTING HEIGHTS WITH THE ARCHITECT & FURNITURE VENDOR PRIOR TO INSTALLATION.
 2. HATCHED AREA NOT IN THIS SCOPE OF WORK.
 3. 'E' DENOTES EXISTING DEVICE TO REMAIN. 'R' DENOTES EXISTING DEVICE TO BE RELOCATED.
 4. VERIFY PROPER FUNCTIONALITY OF ALL EXISTING AND RELOCATED ELECTRICAL DEVICES, INCLUDING THEIR COVERPLATES. PROVIDE REPLACEMENTS AS REQUIRED IF ANY ARE NOT OPERATING AS INTENDED OR HAVE ABOVE NORMAL WEAR OR DEFECTS.
 5. ALL ABANDONED AND UNUSED JUNCTION BOXES, BOXES WITH BLANK COVERPLATES, AND DATA OUTLET LOCATIONS NOT SHOWN ON THIS PLAN ARE TO BE DEMO'D. PATCH ANY EXISTING TO REMAIN WALLS TO A LIKE NEW CONDITION. ANY RECEPTACLE, WITHIN THE SCOPE OF WORK AREA, NOT SHOWN TO REMAIN SHALL BE REMOVED. ALL ASSOCIATED CONDUIT AND WIRING SHALL BE REMOVED BACK TO ITS SOURCE.
 6. DEDICATED OUTLETS SHALL BE 20A RATED, U.S.O.
 7. A 3+1 WIRING CONFIGURATION HAS BEEN ASSUMED FOR THE MODULAR FURNITURE. NO ISOLATED GROUND (IG) RECEPTACLE PROVISIONS HAVE BEEN PROVIDED. IF A DIFFERENT CONNECTION IS REQUIRED PLEASE NOTIFY ENGINEER AND ARCHITECT AS SOON AS POSSIBLE. THE BRANCH CIRCUIT BREAKER CONFIGURATIONS WOULD NEED TO BE REVISED TO MATCH.
 8. COORDINATE ALL CORE DRILL LOCATIONS THROUGH SLAB WITH THE ARCHITECT AND LANDLORD PRIOR TO DRILLING. FOR ANY SLAB WITH POST-TENSION CABLING A SCAN SHALL BE PROVIDED TO LOCATED ANY OBSTRUCTIONS.
 9. RECEPTACLES SHALL BE INSTALLED PER ANSI A117.1.
 10. LABEL ALL OUTLETS, DEVICES, POWER POLES, JUNCTION BOXES, ETC... WITH THE CORRESPONDING CIRCUIT DESIGNATION. LABEL TO BE TYPED/WRITTEN; BLACK LETTERS ON WHITE BACKGROUND.
 11. CIRCUIT HOMERUN DESIGNATIONS ARE NOTED FOR DESIGN INTENT ONLY BASED ON FIELD OBSERVATIONS OF EXISTING PANEL SCHEDULES, WHERE AVAILABLE. CONTRACTOR TO CONFIRM ALL SPARE CIRCUIT BREAKERS AND THOSE MADE AVAILABLE DUE TO DEMOLITION.
 12. PROVIDE PULL STRINGS FOR ALL EMPTY CONDUIT. EACH NON-TERMINATED CONDUIT END SHALL BE PROVIDED WITH A BUSHING.
 13. DIVISION 26 CONTRACTOR SHALL COORDINATE WITH DIVISION 23 TO MAKE SURE RETURN AIR OPENINGS ARE KEPT CLEAR OF ANY CONDUITS.
 14. ALL RECEPTACLES WITHIN 6'-0" OF ANY WATER SOURCE SHALL BE 'GFCI' TYPE.
 15. REFER TO THE AUDIOVISUAL CONSULTANT'S (CMS) COORDINATION SET FOR ADDITIONAL INFORMATION, DETAILS, ETC... RELATED TO ALL ROOMS CONTAINING A/V EQUIPMENT.



1 2ND FLOOR PLAN (AREA N) - ELECTRICAL
E2.102N 1/8"=1'-0"

Date	Description
12.15.2017	ISSUE FOR PERMIT AND CONSTRUCTION

Seal / Signature

 Project Name: 12/15/17

Unum Workplace Transformation
 - Phase 2 & 3 (HO2 & HO3)
 Project Number: 59.6481.003
 Description: 2ND FLOOR PLAN (AREA N) - HO3 - ELECTRICAL

Scale: 1/8" = 1'-0"

E2.102N