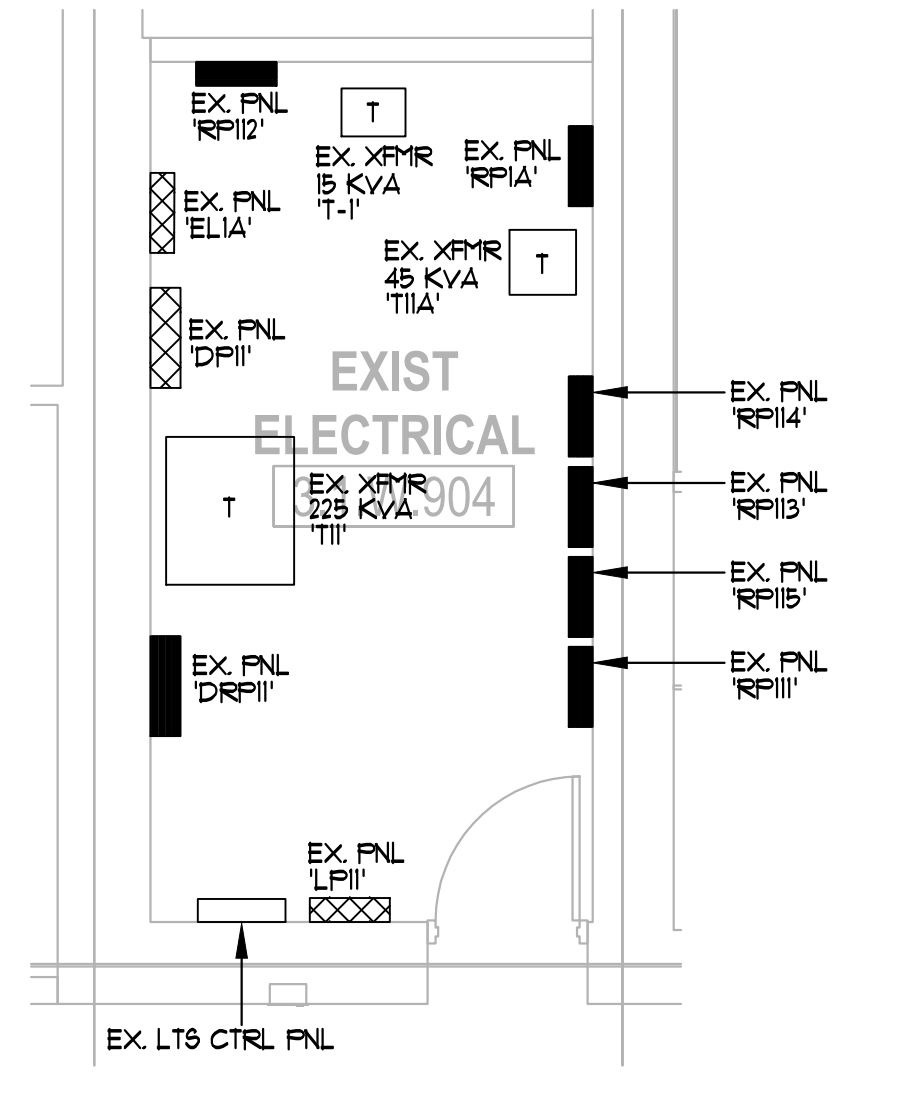


1 1ST FLOOR PLAN (AREA W) - ELECTRICAL  
2.101W 1/8"=1'-0"



2 PARTIAL PLAN (AREA W) - ELECT RM  
2.101W 1/4"=1'-0"

- GENERAL NOTES:  
(APPLY THIS SHEET ONLY)
- COORDINATE ALL DEVICE LOCATIONS AND MOUNTING HEIGHTS WITH THE ARCHITECT & FURNITURE VENDOR PRIOR TO INSTALLATION.
  - HATCHED AREA NOT IN THIS SCOPE OF WORK.
  - 'E' DENOTES EXISTING DEVICE TO REMAIN. 'R' DENOTES EXISTING DEVICE TO BE RELOCATED.
  - VERIFY PROPER FUNCTIONALITY OF ALL EXISTING AND RELOCATED ELECTRICAL DEVICES, INCLUDING THEIR COVERPLATES. PROVIDE REPLACEMENTS AS REQUIRED IF ANY ARE NOT OPERATING AS INTENDED OR HAVE ABOVE NORMAL WEAR OR DEFECTS.
  - ALL ABANDONED AND UNUSED JUNCTION BOXES, BOXES WITH BLANK COVERPLATES, AND DATA OUTLET LOCATIONS NOT SHOWN ON THIS PLAN ARE TO BE DEMO'D. PATCH ANY EXISTING TO REMAIN WALLS TO A LIKE NEW CONDITION. ANY RECEPTACLE, WITHIN THE SCOPE OF WORK AREA, NOT SHOWN TO REMAIN SHALL BE REMOVED. ALL ASSOCIATED CONDUIT AND WIRING SHALL BE REMOVED BACK TO ITS SOURCE.
  - DEDICATED OUTLETS SHALL BE 20A RATED, U.S.O.
  - A 3+1 WIRING CONFIGURATION HAS BEEN ASSUMED FOR THE MODULAR FURNITURE. NO ISOLATED GROUND (IG) RECEPTACLE PROVISIONS HAVE BEEN PROVIDED. IF A DIFFERENT CONNECTION IS REQUIRED PLEASE NOTIFY ENGINEER AND ARCHITECT AS SOON AS POSSIBLE. THE BRANCH CIRCUIT BREAKER CONFIGURATIONS WOULD NEED TO BE REVISED TO MATCH.
  - COORDINATE ALL CORE DRILL LOCATIONS THROUGH SLAB WITH THE ARCHITECT AND LANDLORD PRIOR TO DRILLING. FOR ANY SLAB WITH POST-TENSION CABLES A SCAN SHALL BE PROVIDED TO LOCATED ANY OBSTRUCTIONS.
  - RECEPTACLES SHALL BE INSTALLED PER ANSI A117.1.
  - LABEL ALL OUTLETS, DEVICES, POWER POLES, JUNCTION BOXES, ETC... WITH THE CORRESPONDING CIRCUIT DESIGNATION. LABEL TO BE TYPEWRITTEN, BLACK LETTERS ON WHITE BACKGROUND.
  - CIRCUIT HOMERUN DESIGNATIONS ARE NOTED FOR DESIGN INTENT ONLY BASED ON FIELD OBSERVATIONS OF EXISTING PANEL SCHEDULES, WHERE AVAILABLE. CONTRACTOR TO CONFIRM ALL SPARE CIRCUIT BREAKERS AND THOSE MADE AVAILABLE DUE TO DEMOLITION.
  - PROVIDE PULL STRINGS FOR ALL EMPTY CONDUIT. EACH NON-TERMINATED CONDUIT END SHALL BE PROVIDED WITH A BUSHING.
  - DIVISION 26 CONTRACTOR SHALL COORDINATE WITH DIVISION 23 TO MAKE SURE RETURN AIR OPENINGS ARE KEPT CLEAR OF ANY CONDUITS.
  - ALL RECEPTACLES WITHIN 6'-0" OF ANY WATER SOURCE SHALL BE 'GFCI' TYPE.
  - REFER TO THE AUDIOVISUAL CONSULTANT'S (CMS) COORDINATION SET FOR ADDITIONAL INFORMATION, DETAILS, ETC... RELATED TO ALL ROOMS CONTAINING A/V EQUIPMENT.

- LEGEND NOTES:  
(APPLY THIS SHEET ONLY)
- BASEFEE LOCATION. PROVIDE (1)-1/2" EMPTY CONDUIT TO ABOVE ACCESSIBLE CEILING FOR LOW-VOLTAGE CABLING. PROVIDE HARDWIRED CONNECTION SHOWN TO WHIP AND UTILIZE STEEL 90° STRAIN RELIEF CONDUIT CONNECTOR WITH FACE PLATE TO DIRECT CABLE TO FLOOR ALLOWING FOR CLOSE PLACEMENT OF FURNITURE SYSTEM.
  - POWER POLE LOCATION AT MODULAR FURNITURE. PROVIDE HARDWIRED CONNECTION TO WHIP. COORDINATE EXACT LOCATION WITH FURNITURE VENDOR.
  - A/V INPUT LOCATION AT PRESENTER. PROVIDE QUAD RECEPTACLE, DATA OUTLET, AND 2-GANG JUNCTION BOX WITH (1) 1-1/4" E.C. TO THE ACCESSIBLE CEILING ABOVE.
  - FLOOR BOX LOCATION. PROVIDE A WIREMOLD RFB6 SERIES BOX WITH QUAD RECEPTACLE, AND PROVISIONS FOR TELE/DATA & A/V AS REQUIRED. ROUTE (1)-1" E.C. FOR TELE/DATA AND (1)-1" E.C. FOR A/V THROUGH SLAB, UP NEAREST WALL, TO THE ACCESSIBLE CEILING ABOVE. COORDINATE SAW CUTTING AND PATCHING WITH THE ARCHITECT PRIOR TO CUT.
  - PUBLIC DISPLAY LOCATION. PROVIDE DUPLEX RECEPTACLE AND DATA. HEIGHT IS TO BE DETERMINED. ROUTE (1)-3/4" E.C. FROM THE TELE/DATA J-BOX TO THE ACCESSIBLE CEILING SPACE ABOVE.
  - CARD READER LOCATION. PROVIDE JUNCTION BOX AND 3/4" CONDUIT STUBBED UP TO ACCESSIBLE CEILING ON SECURE SIDE OF WALL. PROVIDE ALL REQUIRED CONNECTIONS/PROVISIONS FOR ELECTRIC DOOR STRIKE, MOTION SENSOR RELEASE, ETC... AS REQUIRED BY SECURITY VENDOR.
  - EXISTING ELECTRIC WATER COOLER/ DRINKING FOUNTAIN BEING REPLACED WITH NEW. UTILIZE EXISTING CIRCUIT/RECEPTACLE FOR RE-CONNECTION. IF OUTLET IS NOT GFCI TYPE, PROVIDE ONE. IF HARDWIRED CONNECTION IS EXISTING MAKE SURE EXISTING BREAKER IS GFCI TYPE. IF NOT, PROVIDE NEW.
  - FOCUS ROOM:  
- SIDE OF LCD SCREEN LOCATION - PROVIDE A 2-GANG J-BOX FOR A/V CABLING WITH A QUAD RECEPTACLE AND TELE/DATA OUTLET BESIDE THE SCREEN. ROUTE (1)-3/4" E.C. FROM THE TELE/DATA J-BOX AND (1)-1/2" E.C. FROM THE A/V J-BOX TO THE ACCESSIBLE CEILING SPACE ABOVE.  
- BELOW TABLE LOCATION - PROVIDE A QUAD DUPLEX, MOUNTED AT 18" A.F.F.  
\*\* REFER TO DETAIL L/AV.301.00 FOR FURTHER DETAILS. \*\*
  - NOT USED.
  - Huddle Room:  
- LCD SCREEN LOCATION - PROVIDE A 2-GANG J-BOX FOR A/V CABLING WITH A QUAD RECEPTACLE AND TELE/DATA OUTLET BEHIND THE SCREEN. ROUTE (1)-3/4" E.C. FROM THE TELE/DATA J-BOX AND (1)-1/2" E.C. FROM THE A/V J-BOX TO THE ACCESSIBLE CEILING SPACE ABOVE.  
- CAMERA LOCATION - PROVIDE A 2-GANG J-BOX AND ROUTE (1)-1/2" E.C. TO THE LCD SCREEN A/V BOX ABOVE.  
- BELOW TABLE LOCATION - PROVIDE 2-GANG JUNCTION BOX FOR A/V CABLING WITH A QUAD RECEPTACLE AND TELE/DATA, MOUNTED AT 18" A.F.F. ROUTE (1)-3/4" E.C. FROM THE TELE/DATA J-BOX AND (1)-1/2" E.C. FROM THE A/V J-BOX TO THE ACCESSIBLE CEILING SPACE ABOVE.  
\*\* REFER TO DETAIL F/AV.301.00 FOR FURTHER DETAILS. \*\*
  - CONFERENCE ROOM:  
- LCD SCREEN LOCATION - PROVIDE A CHEF PACBOX FOR A/V CABLING WITH A DUPLEX RECEPTACLE AND TELE/DATA OUTLET MOUNTED TO THE BACKBOX. ROUTE (1)-3/4" E.C. FROM THE TELE/DATA J-BOX AND (1)-1/2" E.C. FROM THE A/V J-BOX TO THE ACCESSIBLE CEILING SPACE ABOVE.  
- CAMERA LOCATION ABOVE TABLE HEIGHT - PROVIDE A 2-GANG J-BOX AND ROUTE (1)-1/2" E.C. TO THE LCD SCREEN A/V BOX ABOVE.  
- A/V WALL INPUT BELOW SCREEN - PROVIDE 2-GANG JUNCTION BOX, MOUNTED AT 41" A.F.F., FOR A/V CABLING. ROUTE (1)-1/2" E.C. TO THE SCREEN A/V BOX ABOVE.  
\*\* REFER TO DETAIL D/AV.301.00 FOR FURTHER DETAILS. \*\*
  - VIDEO CONFERENCE ROOM(A):  
- A/V WALL INPUT ABOVE SCREEN - PROVIDE 2-GANG JUNCTION BOX, MOUNTED AT 68" A.F.F., FOR A/V CABLING. ROUTE (1)-1/2" E.C. FROM THE A/V J-BOX TO THE ACCESSIBLE CEILING SPACE ABOVE.  
- LCD SCREEN LOCATION (TYP OF 2) - PROVIDE A CHEF PACBOX FOR A/V CABLING WITH A DUPLEX RECEPTACLE AND TELE/DATA OUTLET MOUNTED TO EACH. ROUTE (1)-3/4" E.C. FROM THE TELE/DATA J-BOX AND (1)-1/2" E.C. FROM THE A/V J-BOX TO THE ACCESSIBLE CEILING SPACE ABOVE.  
- A/V WALL INPUT BELOW SCREEN - PROVIDE 2-GANG JUNCTION BOX, MOUNTED AT 49" A.F.F., FOR A/V CABLING. ROUTE (1)-1/2" E.C. TO THE SCREEN A/V BOXES ABOVE.  
\*\* REFER TO DETAIL H/AV.301.00 FOR FURTHER DETAILS. \*\*
  - TRAINING ROOM:  
- LCD SCREEN LOCATION (TYP OF 2) - PROVIDE A CHEF PACBOX FOR A/V CABLING WITH A DUPLEX RECEPTACLE AND TELE/DATA OUTLET MOUNTED TO EACH. ROUTE (1)-3/4" E.C. FROM THE TELE/DATA J-BOX AND (1)-1/2" E.C. FROM THE A/V J-BOX TO THE ACCESSIBLE CEILING SPACE ABOVE.  
- A/V WALL INPUT BELOW SCREEN - PROVIDE 2-GANG JUNCTION BOX, MOUNTED AT 49" A.F.F., FOR A/V CABLING. ROUTE (1)-1/2" E.C. TO THE SCREEN A/V BOXES ABOVE.  
\*\* REFER TO DETAIL H/AV.301.00 FOR FURTHER DETAILS. \*\*
  - NOT USED.
  - EXISTING HVAC UNIT BEING REMOVED. REMOVE ALL ASSOCIATED CONDUIT AND WIRING BACK TO ITS SOURCE.
  - EXISTING HVAC UNIT BEING RELOCATED. EXTEND ALL ASSOCIATED CONDUIT AND WIRING AS REQUIRED.
  - STUB 3/4" CONDUIT INTO DESK FOR POWER CONNECTION AND 1/2" FOR TELE/DATA CABLING. CUT FLOOR AS REQUIRED TO NEAREST COLUMN THAT ALLOWS RACEWAY TO BE ROUTED TO ABOVE CEILING. REPAIR FLOOR TO LIKE-NEW CONDITION. COORDINATE EXACT STUB-UP LOCATION IN MILLWORK WITH MILLWORK PROVIDER.
  - SECURITY TURNSTILE LOCATION. ROUTE RACEWAY IN SLAB TO LOCATIONS INDICATED. COORDINATE EXACT STUB UP LOCATION WITH EQUIPMENT PROVIDER. PROVIDE ADDITIONAL RACEWAY AS NECESSARY FOR FIRE ALARM CONNECTION AT EACH TURNSTILE.
  - REVOLVING DOOR LOCATION. COORDINATE EXACT CONNECTION WITH EQUIPMENT PROVIDER. PROVIDE FIRE ALARM CONNECTION AS REQUIRED TO RELEASE DELAYED ENTRY.
  - AUTOMATIC DOOR CONTROL FOR DISABLED DOOR OPENER. PROVIDE RACEWAY AS REQUIRED TO EACH CONTROL DEVICE. COORDINATE EXACT LOCATION AND RACEWAY WITH SYSTEM PROVIDER.

**unum**  
2211 Congress Street  
Portland, ME 04122

**Gensler**  
214 North Tryon Street  
Suite 2320  
Charlotte, NC 28202  
United States  
Tel 704.377.2725  
Fax 704.377.2807

**BW & A**  
Jeffery Scott Lowery, P.E.  
420 Mineral Line  
Charlotte, NC 28217  
Tel 704.357.9333  
MEP JOB# 170358

Date	Description
12.15.2017	ISSUE FOR PERMIT AND CONSTRUCTION

Seal / Signature

Project Name: 12/15/17

Unum Workplace Transformation  
- Phase 2 & 3 (HO2 & HO3)  
Project Number: 59.6481.003  
Description: 1ST FLOOR PLAN (AREA W) - HO3 - ELECTRICAL

Scale: 1/8" = 1'-0"

E2.101W  
© 2017 Gensler