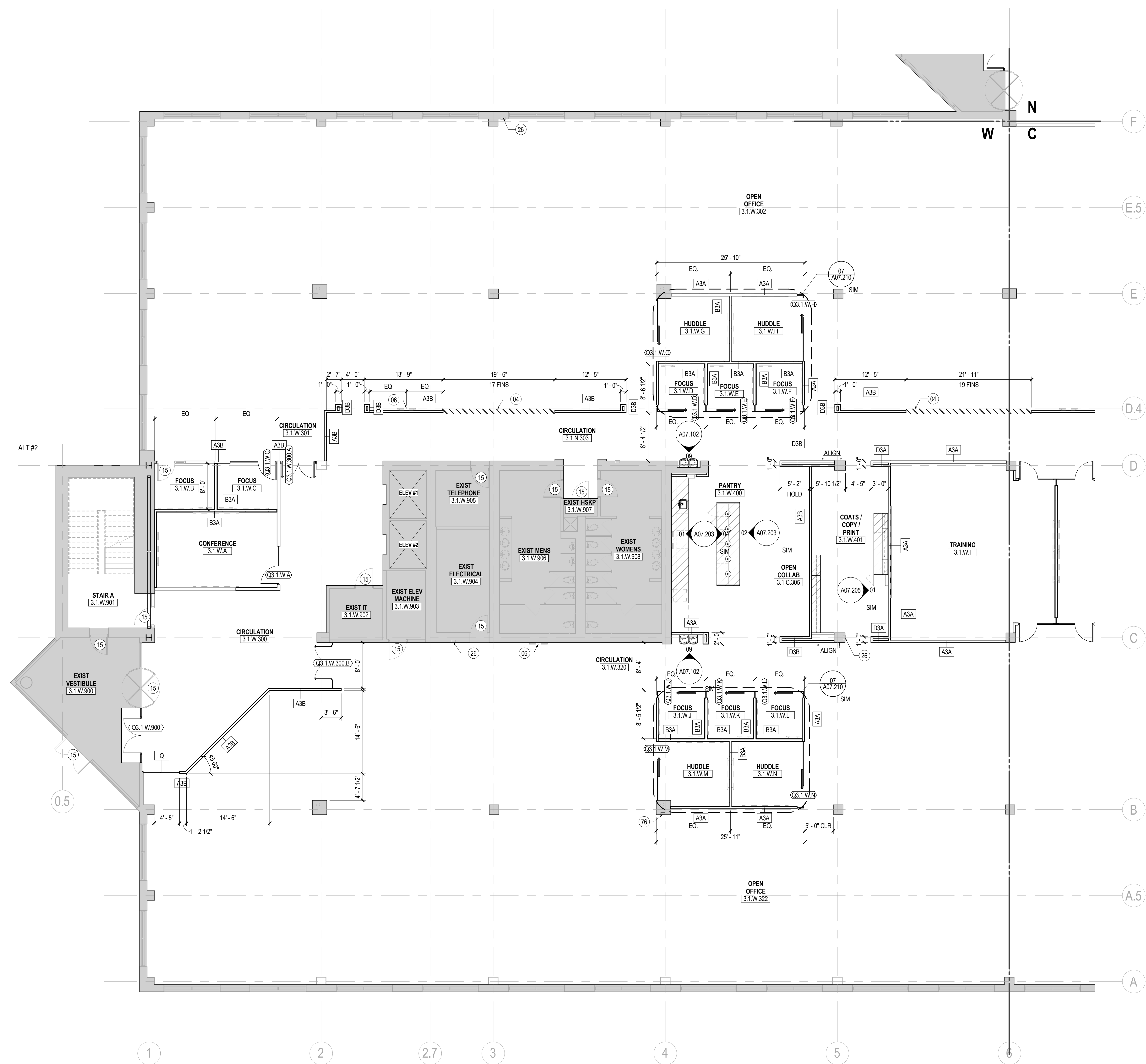
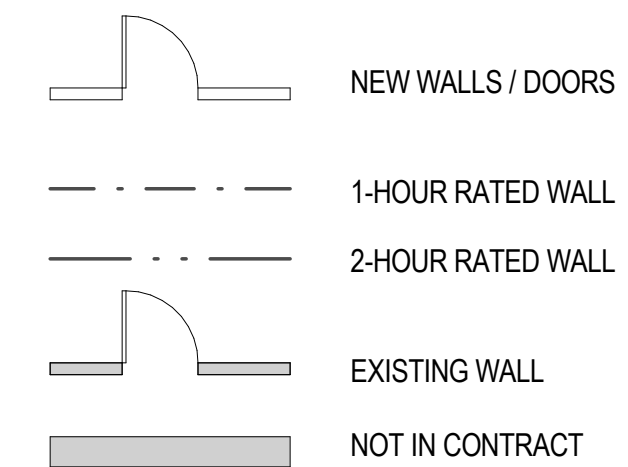


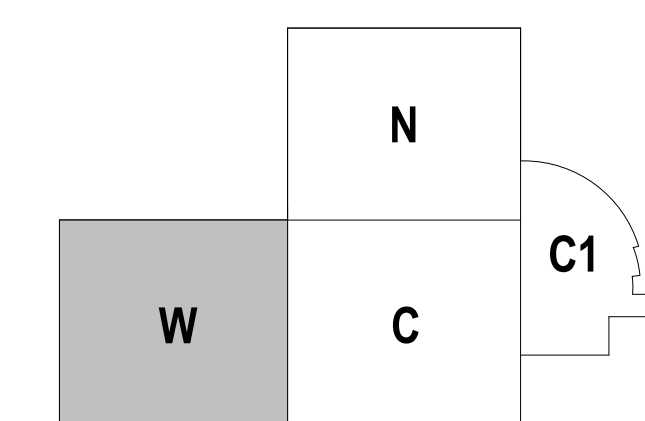
12/15/2017 2:11:53 PM I:\gms\ad\projects\Revit\Level\Access\2516859_6481_003 - UNUM - PORTLAND - HO3_2016_2516859.rvt



01 CONSTRUCTION PLAN - LEVEL 01 - AREA W
SCALE: 1/8" = 1'-0"



KEY PLAN



SHEET NOTES

- 04 DECORATIVE FINIS. REFER TO FINISH PLAN AND FINISH LEGEND.
- 06 TV NIC. GC TO PROVIDE BLOCKING AS REQUIRED. REFER TO AV REFERENCE DRAWINGS.
- 15 EXISTING DOOR TO REMAIN.
- 26 EXISTING FIRE EXTINGUISHER CABINET TO REMAIN. REFER TO DEMOLITION PLANS.
- 76 NEW FIRE EXTINGUISHER CABINET TO BE INSTALLED.



2211 Congress Street
Portland, ME 04122

Gensler

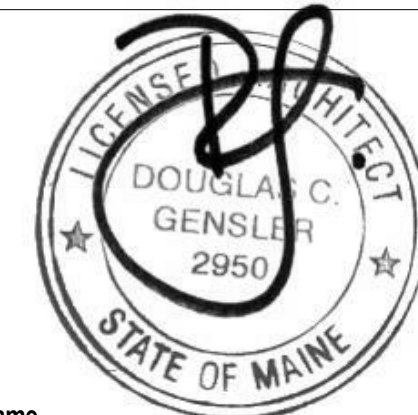
214 North Tryon Street
Suite 2320
Charlotte, NC 28202
United States
Tel: 704.377.2725
Fax: 704.377.2807

GENERAL NOTES

- A. REFER TO SERIES A00 FOR GRAPHIC SYMBOLS, ABBREVIATIONS, AND GENERAL NOTES.
- B. REFER TO SHEET A00.11 FOR DOOR, FRAME, AND HARDWARE SCHEDULE.
- C. REFER TO SHEET A00.10 FOR PARTITION TYPE DETAILS.
- D. DO NOT SCALE DRAWINGS. WRITTEN DIMENSIONS GOVERN. THE TYPE, LOCATION, AND DIMENSIONS OF ALL PARTITIONS AND DOORS SHALL BE AS SHOWN ON ARCHITECT'S DRAWINGS. IN CASE OF CONFLICT, NOTIFY ARCHITECT PRIOR TO PARTITION INSTALLATION. ARCHITECT'S PLAN SUPERSEDES ALL OTHERS.
- E. ALL PARTITIONS ARE DIMENSIONED FROM FINISHED FACE TO FINISHED FACE U.N.O. AND SHALL ALLOW FOR THICKNESS OF WALL FINISHES, INCLUDING WOOD AND FABRIC PANELS.
- F. ALL DIMENSIONS MARKED 'HOLD' OR 'CLEAR' SHALL BE MAINTAINED.
- G. ALL NEW PARTITIONS TO BE PARTITION TYPE A3A, U.N.O.
- H. PROVIDE 20 GA. IN-WALL METAL BLOCKING FOR WALL-MOUNTED MILLWORK AND AV EQUIPMENT.
- I. PERIMETER OFFICES ARE DIMENSIONED FROM INSIDE FACE OF SILL, U.N.O.
- K. ALL NEW WALLS TO BE LOCATED IN RELATION TO EXISTING WALLS TO REMAIN AND COLUMN LINES AS REQUIRED.

Date	Description
12/15/17	ISSUE FOR PERMIT & CONSTRUCTION

Seal / Signature



Project Name
Unum Workplace Transformation - Phase 2 & 3 (HO2 & HO3)

Project Number
59.6481.003

Description
CONSTRUCTION PLAN - LEVEL 01 - AREA W - HO3

Scale
As indicated

A02.111W