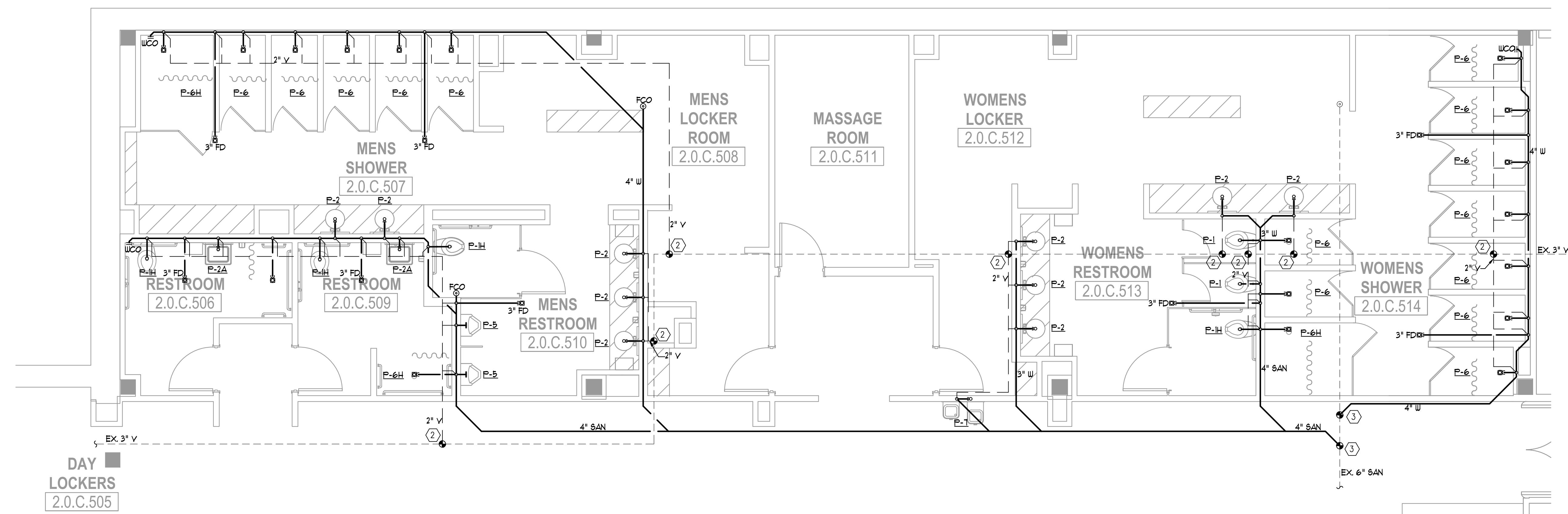


1 PARTIAL PLAN - PLUMBING
1/4" = 1'-0"



2 PARTIAL PLAN - PLUMBING
1/4" = 1'-0"

LEGEND NOTES:
(APPLY THIS SHEET ONLY)

- ① CONNECT NEW 2" CW LINE TO EXISTING DOMESTIC WATER PIPING IN THIS AREA. PROVIDE CW CONNECTION WITH SHUTOFF VALVE. COORDINATE EXACT CONNECTION WITH EXISTING FIELD CONDITIONS.
- ② CONNECT NEW VENT SIZED AS INDICATED TO EXISTING VENT LINE IN THIS AREA. COORDINATE EXACT CONNECTION WITH EXISTING FIELD CONDITIONS.
- ③ CONNECT NEW 4" SANITARY/WASTE TO EXISTING SANITARY SEWER LINE IN THIS AREA. COORDINATE EXACT CONNECTION WITH EXISTING FIELD CONDITIONS.

Date	Description
12.15.2017	ISSUE FOR PERMIT AND CONSTRUCTION

Seal / Signature



12/14/17

Project Name

Unum Workplace Transformation
- Phase 2 & 3 (HO2 & HO3)

Project Number

59.6481.003

Description

GROUND PARTIAL PLAN - PLUMBING

Scale

P3.100