


GENERAL NOTES  
(APPLY THIS SHEET ONLY)

- COORDINATE ALL DEVICE LOCATIONS AND MOUNTING HEIGHTS WITH THE ARCHITECT & FURNITURE VENDOR PRIOR TO INSTALLATION.
- HATCHED AREA NOT IN THIS SCOPE OF WORK.
- 'E' DENOTES EXISTING DEVICE TO REMAIN. 'R' DENOTES EXISTING DEVICE TO BE RELOCATED.
- VERIFY PROPER FUNCTIONALITY OF ALL EXISTING AND RELOCATED ELECTRICAL DEVICES, INCLUDING THEIR COVERPLATES. PROVIDE REPLACEMENTS AS REQUIRED IF ANY ARE NOT OPERATING AS INTENDED OR HAVE ABOVE NORMAL WEAR OR DEFECTS.
- ALL ABANDONED AND UNUSED JUNCTION BOXES, BOXES WITH BLANK COVERPLATES, AND DATA OUTLET LOCATIONS NOT SHOWN ON THIS PLAN ARE TO BE DEMO'D. PATCH ANY EXISTING TO REMAIN WALLS TO A LIKE NEW CONDITION. ANY RECEPTACLE, WITHIN THE SCOPE OF WORK AREA, NOT SHOWN TO REMAIN SHALL BE REMOVED. ALL ASSOCIATED CONDUIT AND WIRING SHALL BE REMOVED BACK TO ITS SOURCE.
- DEDICATED OUTLETS SHALL BE 20A RATED, U.N.O.
- COORDINATE ALL SAW CUTTING LOCATIONS THROUGH THE SLAB WITH THE ARCHITECT AND LANDLORD PRIOR TO CUTTING. FOR ANY SLAB WITH POST-TENSION CABLING A SCAN SHALL BE PROVIDED TO LOCATED ANY OBSTRUCTIONS.
- RECEPTACLES SHALL BE INSTALLED PER ANSI A117.1.
- LABEL ALL OUTLETS, DEVICES, POWER POLES, JUNCTION BOXES, ETC., WITH THE CORRESPONDING CIRCUIT DESIGNATION. LABEL TO BE TYPEWRITTEN; BLACK LETTERS ON WHITE BACKGROUND.
- CIRCUIT HOMERUN DESIGNATIONS ARE NOTED FOR DESIGN INTENT ONLY BASED ON FIELD OBSERVATIONS OF EXISTING PANEL SCHEDULES, WHERE AVAILABLE. CONTRACTOR TO CONFIRM ALL SPARE CIRCUIT BREAKERS AND THOSE MADE AVAILABLE DUE TO DEMOLITION.
- PROVIDE PULL STRINGS FOR ALL EMPTY CONDUIT. EACH NON-TERMINATED CONDUIT END SHALL BE PROVIDED WITH A BUSHING.
- DIVISION 26 CONTRACTOR SHALL COORDINATE WITH DIVISION 23 TO MAKE SURE RETURN AIR OPENINGS ARE KEPT CLEAR OF ANY CONDUITS.
- ALL RECEPTACLES WITHIN 6'-0" OF ANY WATER SOURCE SHALL BE 'GFCI' TYPE.
- REFER TO THE AUDIOVISUAL CONSULTANT'S (CMS) COORDINATION SET FOR ADDITIONAL INFORMATION, DETAILS, ETC... RELATED TO ALL ROOMS CONTAINING A/V EQUIPMENT.

LEGEND NOTES  
(APPLY THIS SHEET ONLY)

- PATIENT CARE AREA.
- NURSE CALL STATION. PROVIDE 1-GANG JUNCTION BOX AND ROUTE TO CENTRAL STATION LOCATION AT CHECK-IN DESK. ASSUME OFFICE 2.0.C.515 FOR PRICING.
- PROJECTION SCREEN. PROVIDE 120V CONNECTION AND CONNECT TO LOW-VOLTAGE RAISE/LOWER SWITCH AS REQUIRED BY THE MANUFACTURER.
- PROJECTOR LOCATION. PROVIDE DUPLEX RECEPTACLE AND DATA OUTLET FLUSH IN THE CEILING.
- LCD LOCATION. PROVIDE DUPLEX RECEPTACLE, DATA OUTLET, AND 2-GANG JUNCTION BOX FOR A/V. ROUTE (1) 1-1/4" E.C. TO THE ACCESSIBLE CEILING ABOVE.
- A/V RACK LOCATION. PROVIDE QUAD RECEPTACLE, DATA OUTLET, AND 6-GANG JUNCTION BOX FOR A/V. ROUTE (3) 1-1/4" E.C. TO THE ACCESSIBLE CEILING ABOVE.  
\*\* REFER TO DETAIL P/AV.302.00 FOR FURTHER DETAILS. \*\*
- A/V INPUT LOCATION AT PRESENTER. PROVIDE QUAD RECEPTACLE, DATA OUTLET, AND 2-GANG JUNCTION BOX WITH (1) 1-1/4" E.C. TO THE ACCESSIBLE CEILING ABOVE.
- CARD READER LOCATION. PROVIDE JUNCTION BOX AND 3" CONDUIT STUBBED UP TO ACCESSIBLE CEILING ON SECURE SIDE OF WALL. PROVIDE ALL REQUIRED CONNECTIONS/PROVISIONS FOR ELECTRIC DOOR STRIKE, MOTION SENSOR RELEASE, ETC... AS REQUIRED BY SECURITY VENDOR.
- FOCUS ROOM:  
- SIDE OF LCD SCREEN LOCATION - PROVIDE A 2-GANG J-BOX FOR A/V CABLING WITH A QUAD RECEPTACLE AND TELE/DATA OUTLET BESIDE THE SCREEN. ROUTE (1) 3/4" E.C. FROM THE TELE/DATA J-BOX AND (1) 1-1/2" E.C. FROM THE A/V J-BOX TO THE ACCESSIBLE CEILING SPACE ABOVE.  
- BELOW TABLE LOCATION - PROVIDE A QUAD DUPLEX. MOUNTED AT 18" A.F.F.  
\*\* REFER TO DETAIL L/AV.301.00 FOR FURTHER DETAILS. \*\*
- CONFERENCE ROOM:  
- LCD SCREEN LOCATION - PROVIDE A CHIEF PACBOX FOR A/V CABLING WITH A DUPLEX RECEPTACLE AND TELE/DATA OUTLET MOUNTED TO THE BACKBOX. ROUTE (1) 3/4" E.C. FROM THE TELE/DATA J-BOX AND (1) 1-1/2" E.C. FROM THE A/V J-BOX TO THE ACCESSIBLE CEILING SPACE ABOVE.  
- CAMERA LOCATION ABOVE TABLE HEIGHT - PROVIDE A 2-GANG J-BOX AND ROUTE (1) 1-1/2" E.C. TO THE LCD SCREEN A/V BOX ABOVE.  
\*\* REFER TO DETAIL D/AV.301.00 FOR FURTHER DETAILS. \*\*
- TRAINING ROOM:  
- LCD SCREEN LOCATION (TYP OF 2) - PROVIDE A CHIEF PACBOX FOR A/V CABLING WITH A DUPLEX RECEPTACLE AND TELE/DATA OUTLET MOUNTED TO EACH. ROUTE (1) 3/4" E.C. FROM THE TELE/DATA J-BOX AND (1) 1-1/2" E.C. FROM THE A/V J-BOX TO THE ACCESSIBLE CEILING SPACE ABOVE.  
- CAMERA LOCATION ABOVE TABLE HEIGHT - PROVIDE A 2-GANG J-BOX AND ROUTE (1) 1-1/2" E.C. TO THE ACCESSIBLE CEILING ABOVE.  
\*\* REFER TO DETAIL H/AV.301.00 FOR FURTHER DETAILS. \*\*
- PUBLIC DISPLAY LOCATION. PROVIDE DUPLEX RECEPTACLE AND DATA. HEIGHT IS TO BE DETERMINED. ROUTE (1) 3/4" E.C. FROM THE TELE/DATA J-BOX TO THE ACCESSIBLE CEILING SPACE ABOVE.
- PROVIDE WIREMOLD 4000 SERIES DUAL CHANNEL RACEWAY ALONG THE PATH SHOWN. AT EACH PIECE OF EQUIPMENT A 20A DUPLEX RECEPTACLE, DATA OUTLET, AND COAX OUTLET ARE TO BE PROVIDED. EXACT FINISH TO BE SELECTED BY THE ARCHITECT.
- A/V RACKS LOCATION. PROVIDE (3) QUAD RECEPTACLES AND DATA OUTLET AT CABLETRAY HEIGHT. PROVIDE (4) 4" E.C. SLEEVES THROUGH WALL TO THE ACCESSIBLE CEILING IN THE ADJACENT FITNESS AREA.  
\*\* REFER TO DETAIL R/AV.302.00 FOR FURTHER DETAILS. \*\*
- A/V TOUCHPANEL LOCATION. PROVIDE DATA OUTLET AND 2-GANG J-BOX FOR A/V. WHERE POSSIBLE, ROUTE (1) 1 1/2" E.C. TO THE ACCESSIBLE CEILING ABOVE.  
\*\* REFER TO DETAIL T/AV.302.00 FOR FURTHER DETAILS. \*\*
- FLOOR BOX LOCATION. PROVIDE A WIREMOLD RFB6 SERIES BOX WITH QUAD RECEPTACLE, AND PROVISIONS FOR TELE/DATA & A/V AS REQUIRED. ROUTE (1) 1" E.C. FOR TELE/DATA AND (1) 1 1/2" E.C. FOR A/V THROUGH SLAB, UP NEAREST WALL, TO THE ACCESSIBLE CEILING ABOVE. COORDINATE SAW CUTTING AND PATCHING WITH THE ARCHITECT PRIOR TO CUTTING.

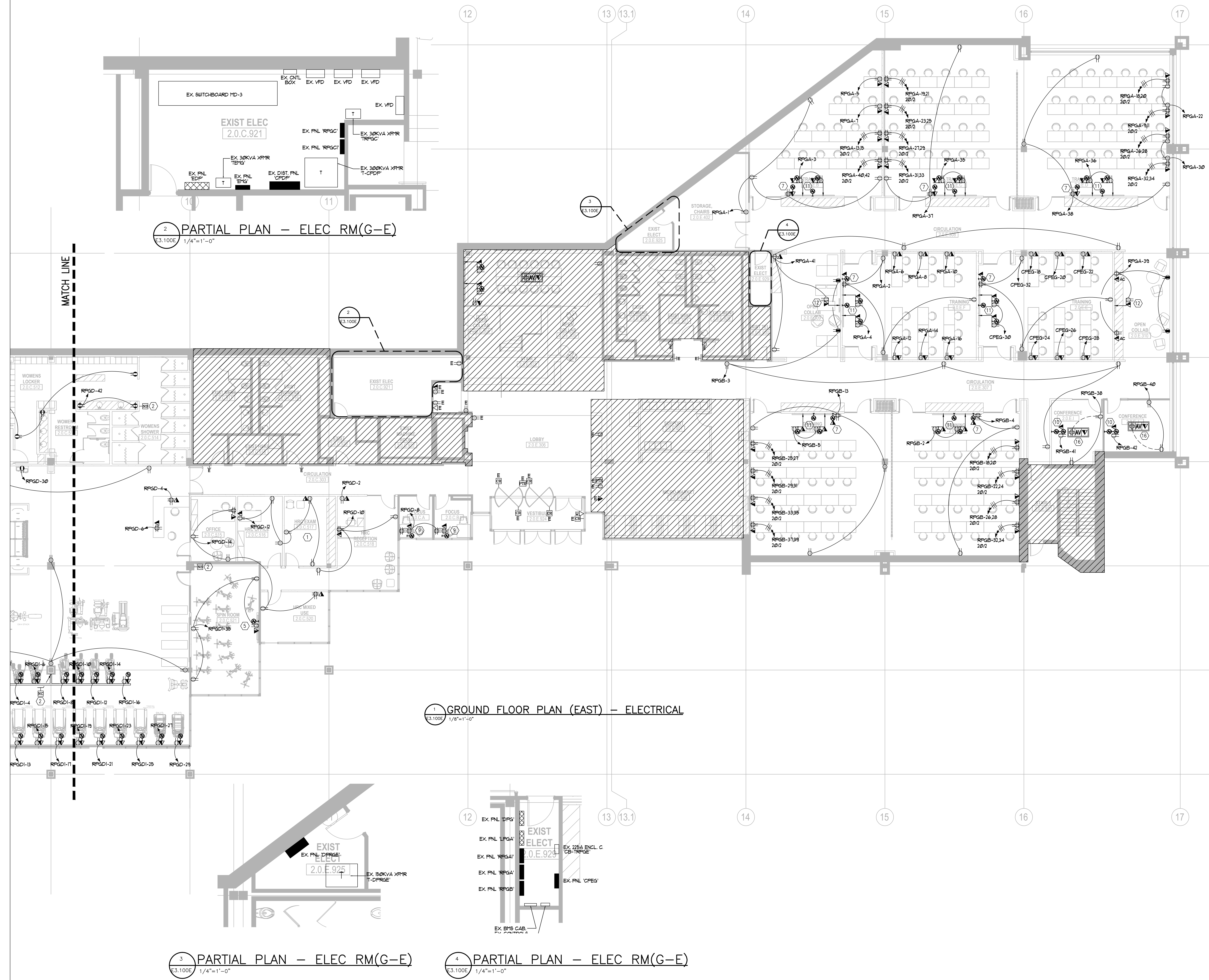
Date	Description
12.15.2017	ISSUE FOR PERMIT AND CONSTRUCTION

Seal / Signature  
  
 Project Name: 12/15/17

Unum Workplace Transformation  
 - Phase 2 & 3 (HO2 & HO3)  
 Project Number: 59.6481.003  
 Description: GROUND LEVEL PLAN (EAST) - HO2 - ELECTRICAL

Scale: 1/8" = 1'-0"

E3.100E



2 PARTIAL PLAN - ELEC RM(G-E)  
E3.100E 1/4"=1'-0"

1 GROUND FLOOR PLAN (EAST) - ELECTRICAL  
E3.100E 1/8"=1'-0"

3 PARTIAL PLAN - ELEC RM(G-E)  
E3.100E 1/4"=1'-0"

4 PARTIAL PLAN - ELEC RM(G-E)  
E3.100E 1/4"=1'-0"