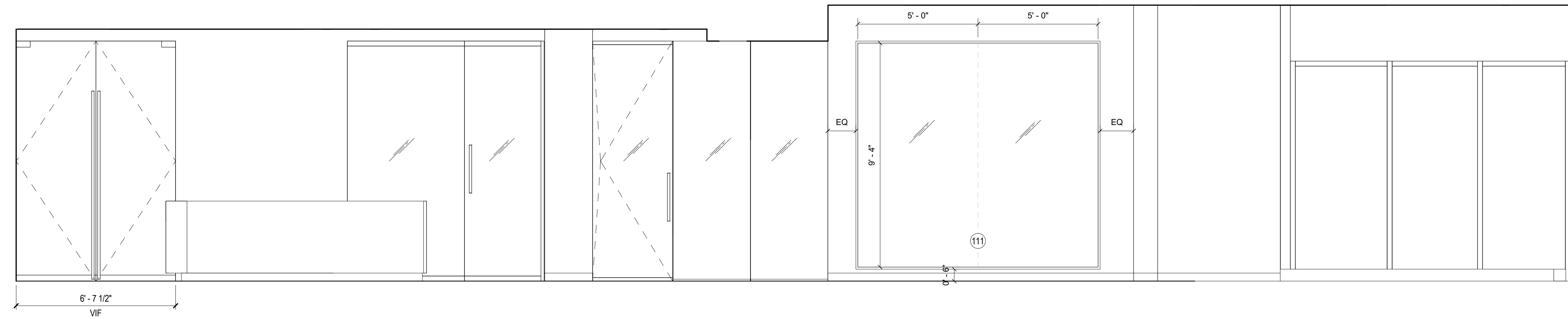
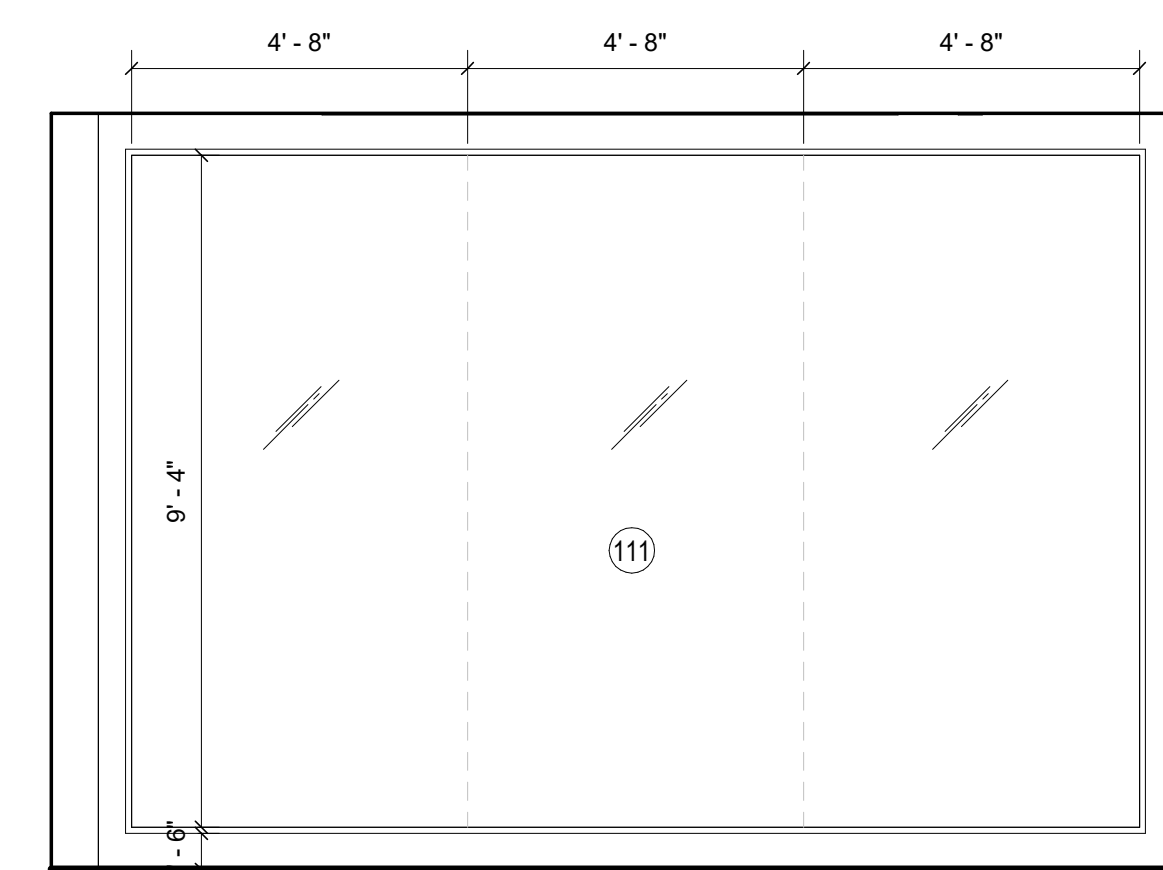


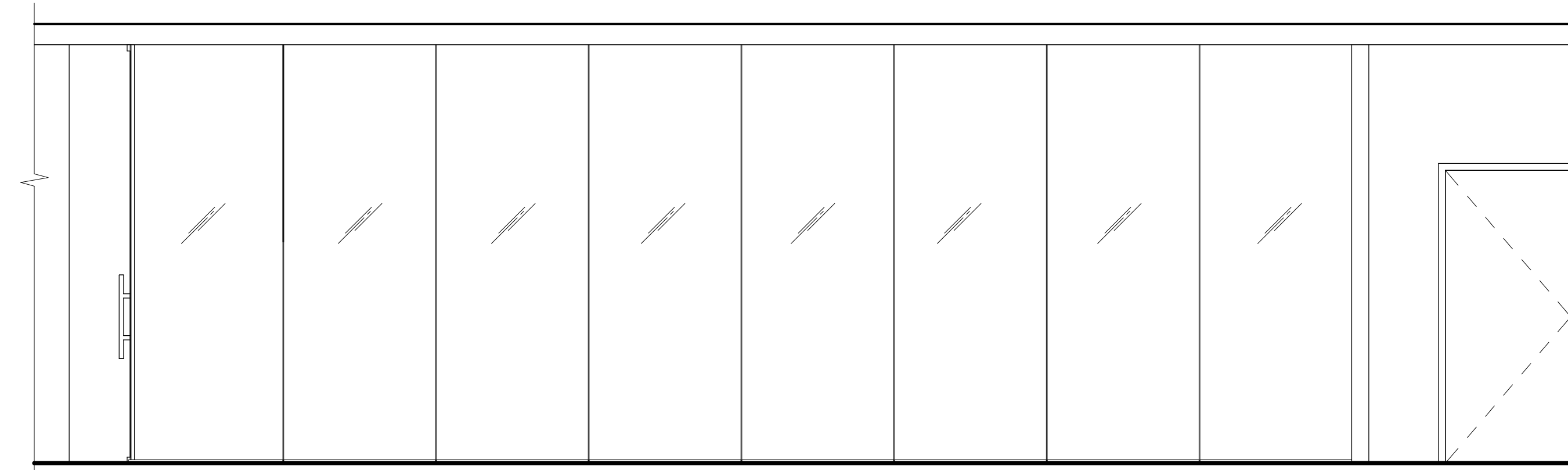
06 B408 SPIN ROOM - EAST ELEVATION
SCALE: 3/8" = 1'-0"



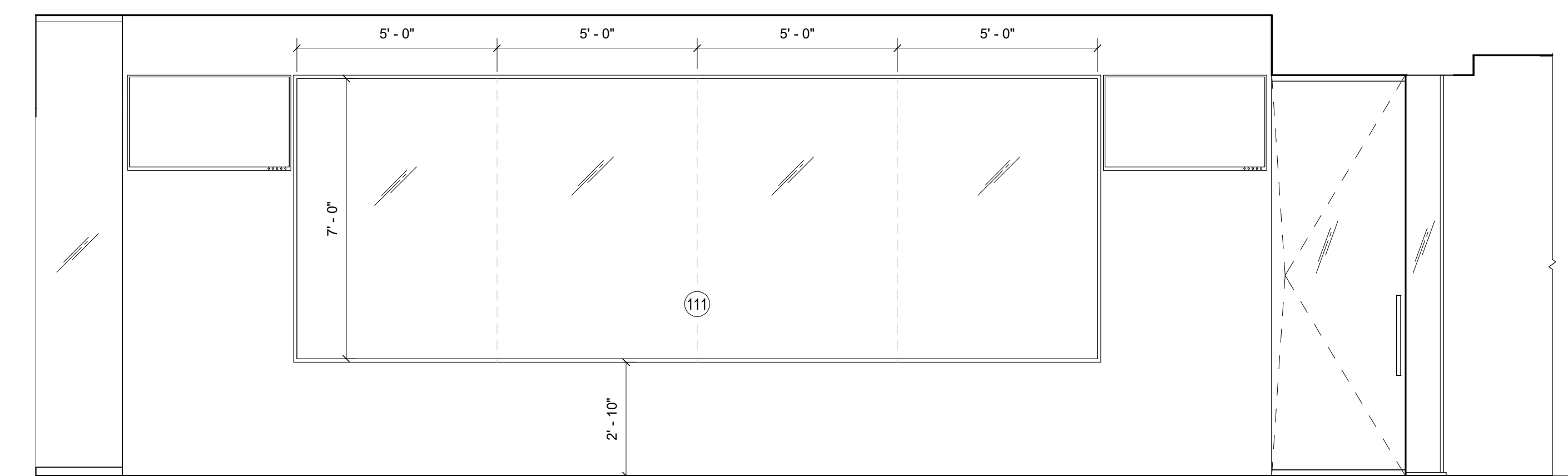
03 B400 FITNESS CENTER - EAST ELEVATION
SCALE: 3/8" = 1'-0"



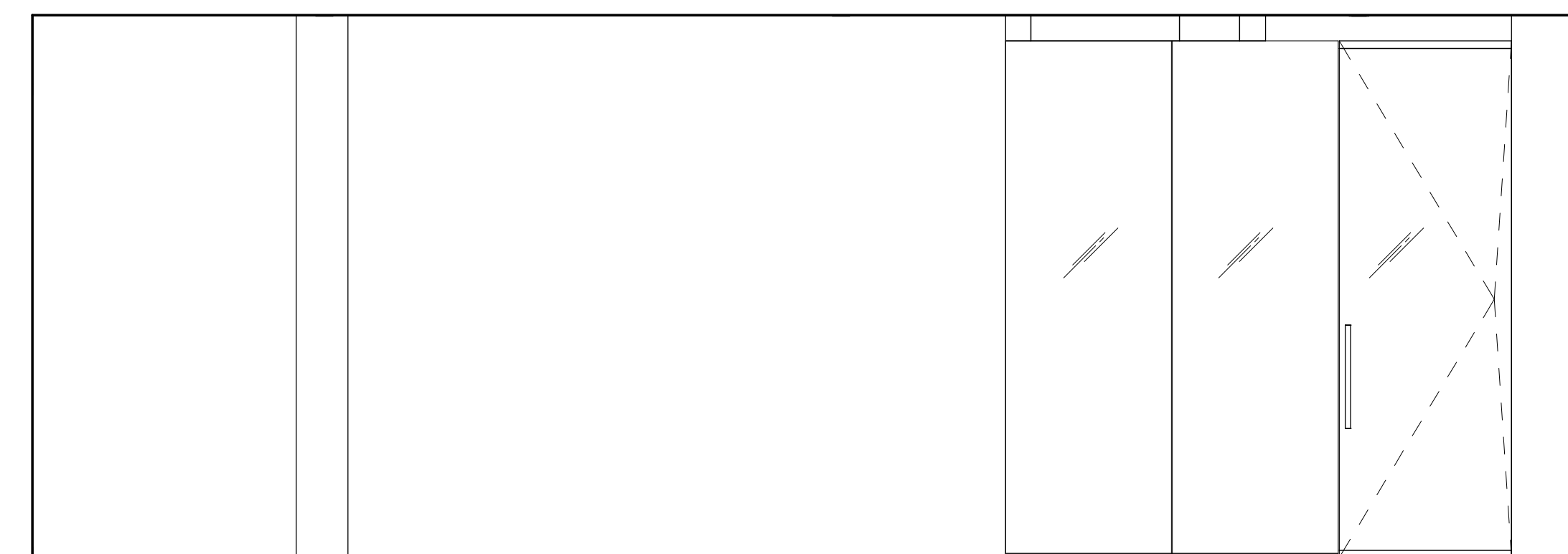
07 B408 SPIN ROOM - NORTH ELEVATION
SCALE: 3/8" = 1'-0"



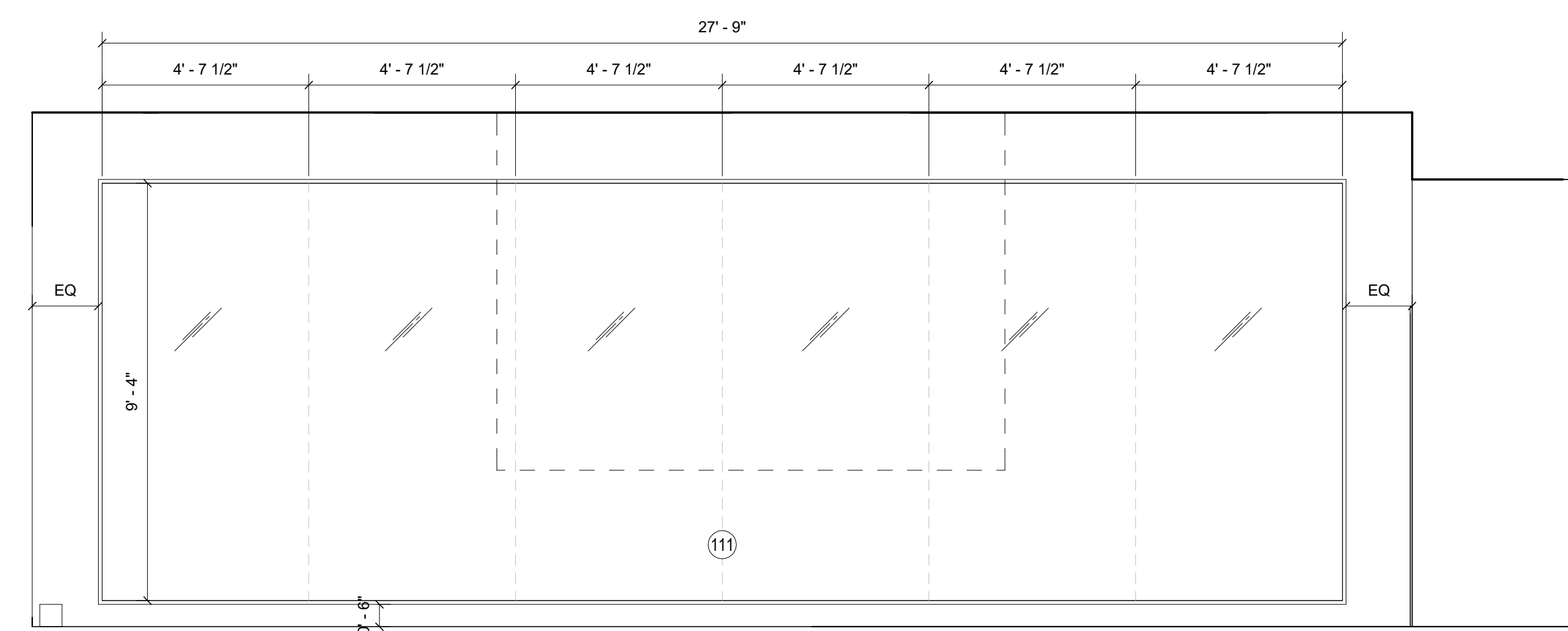
04 B400 FITNESS CENTER - GROUP ROOM ELEVATION
SCALE: 3/8" = 1'-0"



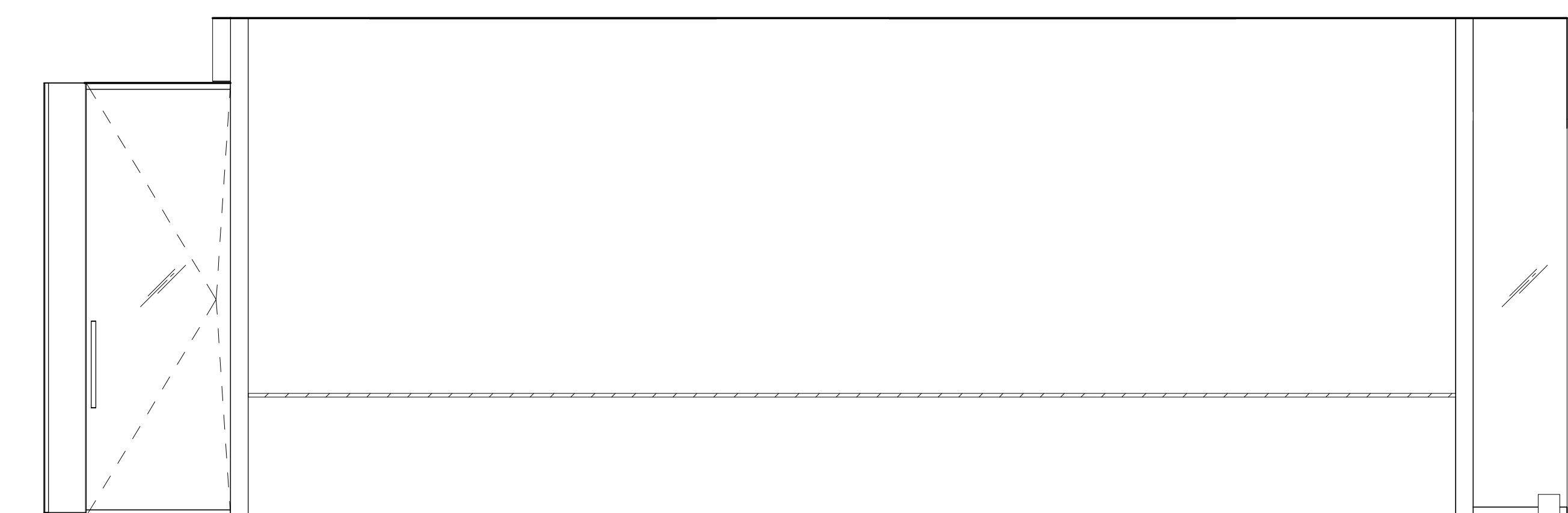
01 B400 FITNESS CENTER - WEST ELEVATION
SCALE: 3/8" = 1'-0"



08 B408 SPIN ROOM - WEST ELEVATION
SCALE: 3/8" = 1'-0"



05 B401 GROUP CLASSROOM - WEST ELEVATION
SCALE: 3/8" = 1'-0"



02 B401 GROUP CLASSROOM - EAST ELEVATION
SCALE: 3/8" = 1'-0"

Date	Description
12/15/17	ISSUE FOR PERMIT & CONSTRUCTION

Seal / Signature

Project Name
Unum Workplace
Transformation - Phase 2 & 3
(H02 & H03)
59.6481.003
Description
INTERIOR ELEVATIONS - LEVEL 00 -
H02

Scale
3/8" = 1'-0"

A07.003

12/15/2017 9:40:57 AM I:\gensler\ad\projects\Revit\Level\A07.003 - UNUM - PORTLAND - HQ_2016_22462.rvt

SHEET NOTES

- 111 FRAMED MIRROR. REFER TO DETAILS AND PROJECT MANUAL FOR MORE INFORMATION.
- 113 "PROFILE 100 FABRIC LIGHT BOX" BY LEDCONN. CUSTOM GRAPHIC PROVIDED BY ARCHITECT. GC COORDINATE FRAMING LAYOUT AND POWER LOCATIONS.

GENERAL NOTES

- A. REFER TO SHEETS SERIES A02.100, A02.200 AND I02.100 FOR CONSTRUCTION, REFLECTED CEILING AND FINISH PLAN GENERAL NOTES.
- B. REFER TO FINISH PLAN FOR WALL BASE AS SCHEDULED, TYPICAL.

KEY PLAN