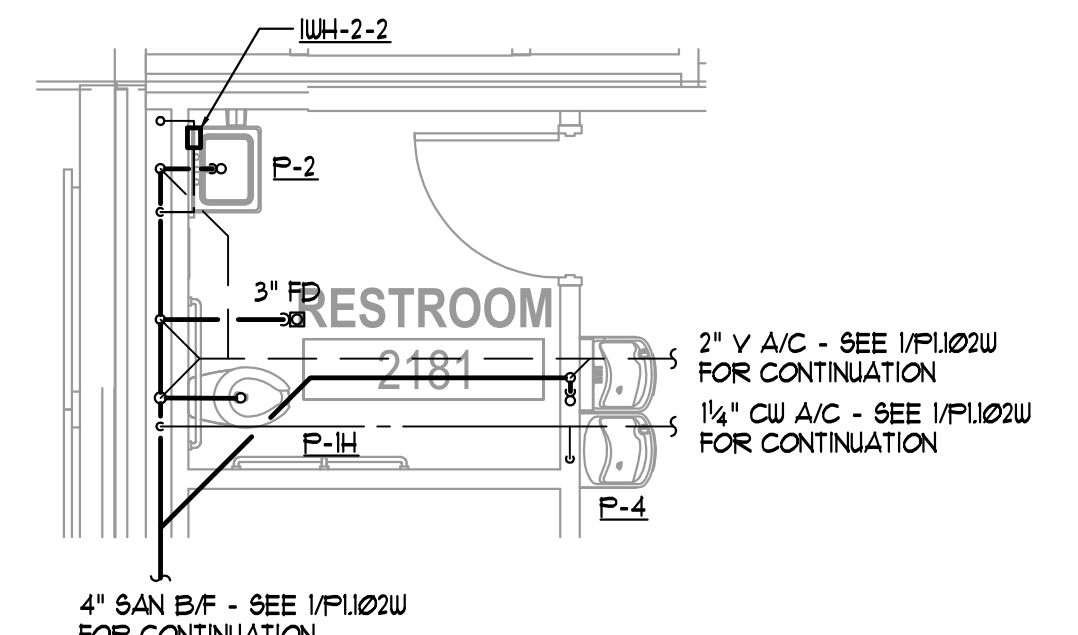


1 2ND FLOOR PLAN (WEST) - PLUMBING  
1/8"=1'-0"



2 2ND FLOOR PART PLAN (WEST) - PLUMBING  
1/4"=1'-0"

- LEGEND NOTES:  
(APPLY THIS SHEET ONLY)
- CONNECT 1-1/2" COLD WATER, 2" WASTE AND 2" VENT TO EXISTING IN THIS AREA OF LARGER OR EQUAL SIZE AND MAKE CW CONNECTION WITH SHUT-OFF VALVE. VERIFY EXACT TIE IN LOCATION PRIOR TO CONSTRUCTION.
  - NOT USED.
  - ROUTE 1/2" CW AND CONNECT WITH SHUT OFF VALVE TO ICE MAKER AND PROVIDE IN RECESSED BOX BELOW COUNTER. COORDINATE EXACT CONNECTION LOCATION WITH EQUIPMENT AND ARCHITECT AND ROUTE DRAIN TO HUB DRAIN IN THIS AREA. PROVIDE BACK FLOW PREVENTOR AS REQUIRED BY LOCAL AUTHORITY. BFP SHALL MEET ASSE 1022 IN ACCORDANCE WITH IPC 608.16.10.
  - NOT USED.
  - PROVIDE HUB DRAIN BELOW COUNTER IN READILY ACCESSIBLE LOCATION. COORDINATE WITH MILLWORK CONTRACTOR TO ENSURE PROPER ACCESS TO DRAIN.
  - ROUTE 1/2" CW AND CONNECT WITH SHUT OFF VALVE TO COFFEE MAKER AND PROVIDE IN RECESSED BOX BELOW COUNTER AND COORDINATE EXACT PIPING ROUTING WITH ARCHITECT. PROVIDE BACK FLOW PREVENTOR AS REQUIRED BY LOCAL AUTHORITY. BFP SHALL MEET ASSE 1022 IN ACCORDANCE WITH IPC 608.16.10.
  - REPLACE EXISTING FLUSH VALVES WITH BATTERY OPERATED SENSOR TYPE, SLOAN G2-8111 OR EQUAL FOR THE WATER CLOSETS AND SLOAN G2-8180 OR EQUAL FOR THE URINALS.
  - DEMO EXISTING LAVATORIES IN THIS AREA AND REPLACE WITH NEW FIXTURES AS NOTED AND SPECIFIED. ENSURE THAT ALL EXISTING PIPING IS USED AND IN WORKING CONDITION AND TERMINAL ALL WATER PIPING WITH WALL STOPS.

Date Description  
06.18.2017 ISSUE FOR PERMIT AND CONSTRUCTION

Seal / Signature

Project Name  
Unum Workplace  
Transformation- Phase 1 (H02)

Project Number  
59.6481.000

Description  
2ND FLOOR PLAN (WEST) - PLUMBING

Scale