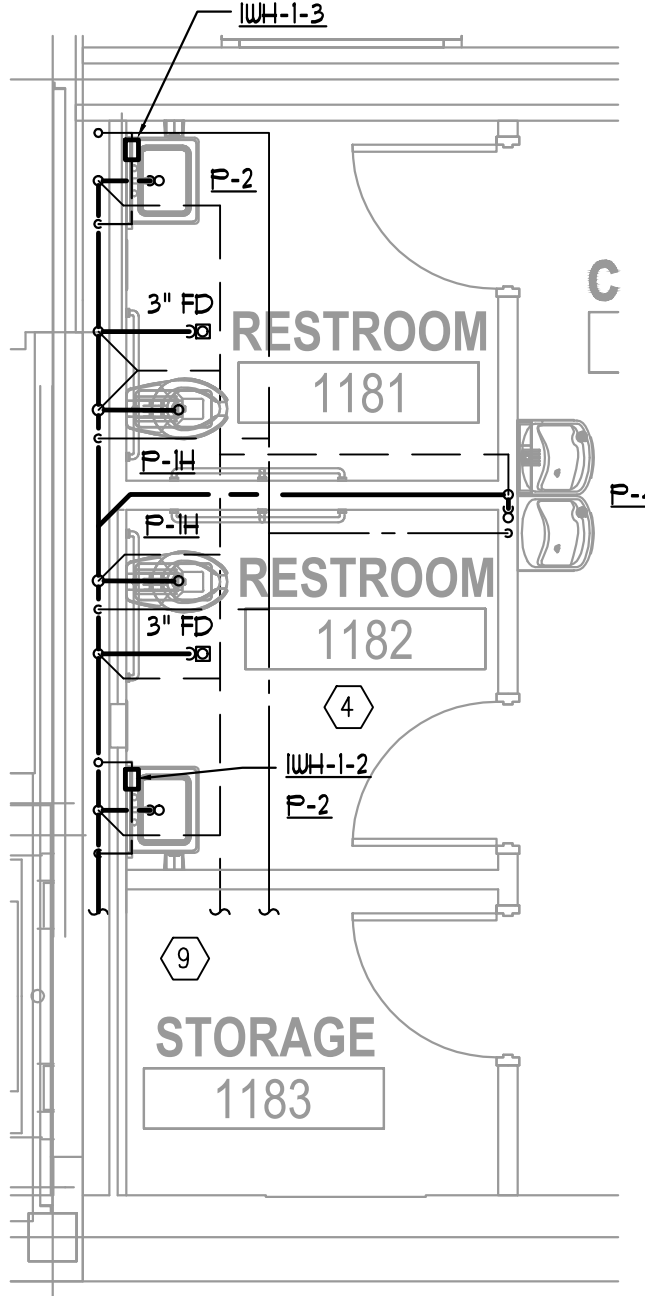



1 1ST FLOOR PLAN (WEST) - PLUMBING
1/8"=1'-0"



2 1ST FLOOR PART PLAN (WEST) - PLUMBING
1/4"=1'-0"

- LEGEND NOTES:
(APPLY THIS SHEET ONLY)
- CONNECT 1-1/2" COLD WATER, 2" WASTE AND 2" VENT TO EXISTING IN THIS AREA OF LARGER OR EQUAL SIZE AND MAKE CW CONNECTION WITH SHUT-OFF VALVE. VERIFY EXACT TIE IN LOCATION PRIOR TO CONSTRUCTION.
 - 2" WASTE AND 2" VENT TO EXISTING IN THIS AREA OF LARGER OR EQUAL SIZE. VERIFY EXACT TIE IN LOCATION PRIOR TO CONSTRUCTION.
 - ROUTE 1/2" CW AND CONNECT WITH SHUT OFF VALVE TO ICE MAKER AND PROVIDE IN RECESSED BOX BELOW COUNTER. COORDINATE EXACT CONNECTION LOCATION WITH EQUIPMENT AND ARCHITECT AND ROUTE DRAIN TO HUB DRAIN IN THIS AREA. PROVIDE BACK FLOW PREVENTOR AS REQUIRED BY LOCAL AUTHORITY. BFP SHALL MEET ASSE 1022 IN ACCORDANCE WITH IPC 608.16.10.
 - EXISTING PLUMBING (SINK, WATER CONNECTIONS, ETC) SHALL BE DEMOLISHED IN THIS AREA. SEE DEMO DRAWINGS FOR ADDITIONAL DETAILS.
 - PROVIDE HUB DRAIN BELOW COUNTER IN READILY ACCESSIBLE LOCATION. COORDINATE WITH MILLWORK CONTRACTOR TO ENSURE PROPER ACCESS TO DRAIN.
 - ROUTE 1/2" CW AND CONNECT WITH SHUT OFF VALVE TO COFFEE MAKER AND PROVIDE IN RECESSED BOX BELOW COUNTER AND COORDINATE EXACT PIPING ROUTING WITH ARCHITECT. PROVIDE BACK FLOW PREVENTOR AS REQUIRED BY LOCAL AUTHORITY. BFP SHALL MEET ASSE 1022 IN ACCORDANCE WITH IPC 608.16.10.
 - REPLACE EXISTING FLUSH VALVES WITH BATTERY OPERATED SENSOR TYPE, SLOAN G2-8111 OR EQUAL FOR THE WATER CLOSETS AND SLOAN G2-8180 OR EQUAL FOR THE URINALS.
 - DEMO EXISTING LAVATORIES IN THIS AREA AND REPLACE WITH NEW FIXTURES AS NOTED AND SPECIFIED. ENSURE THAT ALL EXISTING PIPING IS USED AND IN WORKING CONDITION AND TERMINAL ALL WATER PIPING WITH WALL STOPS.
 - CONNECT 4" SAN 8/5, 2" VENT A/C AND 1-1/2" CW A/C TO EXISTING OF EQUAL OR GREATER SIZE FROM DEMOLISHED RESTROOM GROUP IN THIS AREA. COORDINATE WITH EXACT PIPE LOCATIONS.

Date: 06.18.2017
Description: ISSUE FOR PERMIT AND CONSTRUCTION

Seal / Signature

 Project Name: Unum Workplace Transformation- Phase 1 (H02)
 Project Number: 59.6481.000
 Date: 08/18/17

Description:
1ST FLOOR PLAN (WEST) - PLUMBING

Scale: