

D. All P-traps shall be minimum 17-gauge brass.

E. Flush valves shall have non-hold open feature, vacuum breakers and cover cap on angle-type stop.

F. Provide all final connections to all equipment and fixtures furnished by Owner.

G. Unless otherwise specified in an individual fixture description, all enamel cast-iron and porcelain fixtures shall be white.

1.02 INTENT

A. It is the intent of this Section of the specifications to provide complete, operable, adjusted, clean plumbing fixtures as shown and specified, which are free of leaks, noise, air, vibration and waterflow fluctuations.

1.03 BASIS OF DESIGN

A. The basis of design is as outlined for each fixture in the 2.0 PRODUCTS subsection. Any proposed substitutions shall be proven equal in all respects to the equipment specified as the basis of design.

1.04 ACCEPTABLE MANUFACTURERS

A. Acceptable fixture manufacturers are American Standard, Eljer and Kohler provided that their units are equal in all respects for this specific project. Faucets and trim may be equal products as manufactured by Chicago, Delany, Zurn, T&S Bronze, Brass Works or Speakman.

B. Flush valves may be equal products by Zurn or Delany. Stainless steel sinks and drinking fountains shall be as manufactured by those companies specified for each specific item outlined under subsection 2.0 PRODUCTS.

2.0 PRODUCTS

2.01 WATER CLOSETS

A. Provide solid plastic white toilet seats with each water closet, selected to match the water closet noted. Toilet seats shall be elongated style with open front and check hinge, Bemko or approved equal.

J. Fixtures P-1 shall be elongated style, 15" high, 1.6 gallon flush, siphon jet, American Standard "Modera" #3451.160, bottom outlet style with flush valve, bowl and supply stop. Flush valve shall be Sloan model C2-8111 battery operated automatic flush. Fixtures P-1H shall be similar; 17" high handicapped style; American Standard "Modera" #3043.102, except that they shall be mounted in accordance with the handicap code.

2.02 LAVATORIES

A. Fixtures P-2 shall be American Standard "Lucerne" #0356.015, vitreous china, wall hung lavatories with concealed carrier and anchoring screws; 8" centers faucet punching and 1 1/4" drain. Fittings shall include a deck mounted battery operated Sloan No. EAF-250 faucet with sensor, chrome-plated finish, aerator, chrome-plated tailpieces, strainers, P-trap, supply stops, anchoring clips and all other trim. Wall supply stops, drains and tailpieces shall be offset wheelchair type.

B. Fixtures P-2A shall be American Standard "Ovalyn" #0497-221, 21" x 17" vitreous china, undercounter, oval lavatory complete with front overflow and 1 1/4" drain. Fittings shall include a deck mounted battery operated Sloan No. EAF-250 faucet with sensor, chrome-plated finish, aerator, chrome-plated tailpieces, strainers, P-trap, supply stops, anchoring clips and all other trim. Wall supply stops, drains and tailpieces shall be offset wheelchair type.

2.03 SINKS

** (Note: To meet ADA sinks depth must be 6 3/4" or less)**

A. Fixture P-3 shall be double compartment, 18 gauge stainless steel with sound-deadening, 30-3/4" x 20-1/2" and 5-3/8" deep; Elkay Model No. ELUHAD. Faucet punching shall be 3 hole O.C. Faucet set shall match the 3-hole punching and shall be deck-mounted, lever-style black, all brass, gooseneck faucet with aerator and wrist blade handles; Moen "Align Collection" 7565 Series and a stainless steel drain, cup strainer and rubber stopper. Provide complete trim such as service stops, tailpieces and P-trap.

B. *ADA* Fixtures P-3 shall be single compartment, 18 gauge stainless steel with sound-deadening, 14-1/4" x 14-1/4" and 5-1/2" deep; Elkay Model No. ELUHAD. Fittings shall include a deck mounted battery operated Sloan No. EAF-750 faucet with sensor. Provide with stainless steel drain, cup strainer and rubber stopper. Provide complete trim such as service stops, tailpieces and P-trap.

2.04 DRINKING FOUNTAINS AND WATER COOLERS

A. Fixtures P-4 shall be barrier free split level surface mounted electric water cooler with bottle filler; each complete with P-trap and supply service stops. Electric water cooler shall deliver 8.0 GPH of 50 degrees F. water at 90 degrees F. ambient and 80 degrees F. inlet water. Cooler shall have horizontal stainless steel top. Bubbler shall have flexible guard and operate between 20 and 120 psi. Separate valve and diaphragm-type automatic stream regulator shall be mounted with cabinet. Refrigeration system shall employ high efficiency, positive start compressor, non-pressurized counter-flow cooling coil with totally encapsulated insulation and shall be controlled by an integral, adjustable thermostat. Coolers shall have front pushbar water controls with raised lettering for the visually impaired. Coolers shall comply with ANSI 117.1 for both visual and motion disabilities and ADA. Cabinet shall have removable front panels and be finished in a neutral-gray baked enamel. Coolers shall be certified by ARI to meet Standard 1010. Coolers shall be Elkay LZSTLWSSP.

3.0 EXECUTION

3.01 INSTALLATION

A. Units shall be installed as indicated and in conformance with the manufacturer's recommendations. Coordinate the actual units to be provided with all trades.

B. All plumbing fixtures shall be free of leaks, provided completely finished, trimmed, adjusted, cleaned and ready for use. They shall be properly secured to the structure by the use of thru-bolting, backplates, carriers, expansion shields (for floor mounting only) or toggle bolts.

C. Wall hung fixtures supported on chair carriers shall be bolted to the floor slab. Carefully coordinate space requirements and fixture mounting height requirements with supports being furnished.

D. Fixtures supported with wall hangers on masonry chase walls shall be fastened to the wall with not less than 3/8" bolts which shall pass through the wall and through a 1/4" x 4" wide steel backplate on the unfinished chase wall side.

E. Where fixtures are hung on single masonry walls without a pipe chase behind, they shall be mounted with 3/8" toggle bolts.

F. Fixtures on steel stud walls shall have a 1/4" x 4" wide steel backplate wired with 1/16" steel wire to the studs. Bolts not less than 3/8" shall secure the fixtures through the fixture hanger and the backplate.

G. All mounting holes provided in fixtures shall be used for support. In addition to the main hangers, 1/4" toggle bolts shall secure the bottom of all wall hung fixtures at each drilling provided for this purpose.

H. Mount wall-hung fixtures at the heights indicated on the Architectural Drawings or as prescribed by local code. Special attention is called to the installation requirements of the ANSI Handicap Code.

3.02 CLEANING AND ADJUSTMENT

A. The units shall be cleaned, tested and field-adjusted to provide optimum flow and drainage.

END OF SECTION

ABBREVIATIONS

A/C	ABOVE CEILING ACCESS DOOR	ID	INSIDE DIMENSION
ADJ	ADJUSTABLE	IN	INCHES
AF	ABOVE FINISHED FLOOR	KW	KILOWATTS
AUTO	AUTOMATIC		
AC	AIR CONDITIONING		
AHU	AIR HANDLING UNIT	LB	POUNDS
ARP	ACID RESISTANCE PIPING	LWR	LOOP WATER RETURN
BAL	BALANCING BELOW FLOOR	LWS	LOOP WATER SUPPLY
B/F	BELOW GRADE		
B/G	BELOW GRADE		
BHP	BRAKE HORSEPOWER		
BCO	BASE CLEANOUT		
		MIN	MINIMUM
		MAX	MAXIMUM
CW	COLD WATER (DOMESTIC) CLEANOUT	MFR	MANUFACTURER
DN	DOWN	NC	NORMALLY CLOSED
DR	DRAIN	NG	NATURAL GAS
dt	DITTO	NFGH	NON-FREEZE GROUND HYDRANT
dwg	DRAWING	NFWH	NON-FREEZE WALL HYDRANT
		NO	NORMALLY OPEN
		NOM	NOMINAL
EA	EACH	OD	OVERFLOW DRAIN
ECC	ECCENTRIC		
EFF	EFFICIENCY	PSI	POUNDS PER SQUARE INCH
EOD	EMERGENCY OVERFLOW DRAIN		
EWT	ENTERING WATER TEMPERATURE		
		RAD	RADIUS
FCO	FLOOR CLEANOUT	RED	REDUCER
FD	FLOOR DRAIN	RS	REFRIGERANT SUCTION
FLR	FLOOR	RTU	ROOFTOP UNIT
FOB	FLAT ON BOTTOM		
FOT	FLAT ON TOP	SAN	SANITARY
FFM	FEET PER MINUTE	SO	SQUARE
FPS	FEET PER SECOND	ST	STORM
FT	FEET	TEMP	TEMPERATURE
		Typ	TYPICAL
G	GATE	UON	UNLESS OTHERWISE NOTED
GA	GAUGE		
GPM	GALLONS PER MINUTE		
GL	GLOBE	V	VENT
GCO	GRADE CLEANOUT	VA	VALVE
		VTR	VENT THRU ROOF
HD	HUB DRAIN	WC	WATER COLUMN
HP	HORSEPOWER	WHA	WATER HAMMER ARRESTOR
HTG	HEATING	WT	WEIGHT
HW	HOT WATER (DOMESTIC)	W	WASTE
HWR	HOT WATER RETURN		
HWR	HOT WATER REVERSE RETURN		
HWS	HOT WATER SUPPLY		

GENERAL NOTES

- THESE DRAWINGS ARE SCHEMATIC IN NATURE AND ARE NOT INTENDED TO SHOW ALL POSSIBLE CONDITIONS. IT IS INTENDED THAT A COMPLETE TENANT MECHANICAL SYSTEM BE PROVIDED WITH ALL NECESSARY EQUIPMENT, ACCESSORIES, OPTIONS AND CONTROLS, COMPLETELY COORDINATED WITH ALL DISCIPLINES. ALL ITEMS AND LABOR REQUIRED FOR A COMPLETE TENANT MECHANICAL SYSTEM IN ACCORDANCE WITH ALL APPLICABLE CODES, STANDARDS AND THE BASE BUILDING CONTRACT DOCUMENTS SHALL BE FURNISHED WITHOUT INCURRING ADDITIONS TO THE CONTRACT.
- REFER TO THE ARCHITECTURAL DRAWINGS FOR EXACT PARTITION LAYOUTS, REFLECTED CEILING PLANS, DIMENSIONS, ETC.
- EXISTING PLUMBING IS SHOWN BY DASHED LINES. NEW WORKS AND RELOCATED WORK ARE SHOWN BY SOLID LINES. EXISTING WORK TO BE REMOVED IS SHOWN CROSSHATCHED.
- VISIT SITE AND CAREFULLY EXAMINE EXISTING CONDITIONS PRIOR TO SUBMITTING BID. THE EXISTING CONDITIONS SHOWN ARE BASED ON DOCUMENTS PROVIDED BY OTHERS AND HAVE NOT BEEN VERIFIED BY THE ENGINEER. IF EXISTING CONDITIONS DIFFER FROM DRAWINGS IN SUCH A MANNER THAT WILL AFFECT PRICING, (I.E., DUCTWORK, WAY OR PILE ARE NOT IN THE SHOWN LOCATION) CONTRACTOR WILL NOTIFY OWNER SO THAT A RESOLUTION CAN BE MADE PRIOR TO SUBMITTING BIDS. NO ALLOWANCE WILL BE MADE FOR LACK OF KNOWLEDGE OF EXISTING CONDITIONS.
- REFER TO THE ARCHITECTURAL REFLECTED CEILING PLANS FOR EXACT LOCATIONS OF ALL CEILING MOUNTED AIR DISTRIBUTION DEVICES. IF ANY ITEMS ARE NOT SHOWN ON THE REFLECTED CEILING PLANS, PREPARE A DRAWING OF THE PROPOSED LOCATION AND PRESENT IT TO THE ARCHITECT FOR APPROVAL PRIOR TO INSTALLATION.
- ALL PLUMBING FIXTURES SHALL BE PROVIDED AS COMPLETE PACKAGES PROVIDING ALL RELATED ACCESSORIES SUCH AS TAIL PIECES, SUPPLY STOPS, P-TRAPS ETC., SO AS TO FURNISH A COMPLETE JOB. SEE ARCHITECTURAL DRAWINGS FOR SINK SPECIFICATION.
- ALL SANITARY WASTE, VENT AND WATER PIPING SHALL BE AS SPECIFIED IN THE BASE BUILDING DOCUMENTS.
- ALL HOT AND COLD WATER PIPING SHALL BE INSULATED WITH 1" THICK PERFORMED FIBERGLASS PIPE INSULATION WITH ALL-SERVICE JACKET. ALL LONGITUDINAL JOINTS, TEARS, ETC., SEALED WITH A MATCHING WHITE VAPOR BARRIER TAPE. ELBOWS SHALL BE MITERED OR MAY BE ZESTON COVERS FILLED WITH EQUIVALENT FIBERGLASS INSULATION.

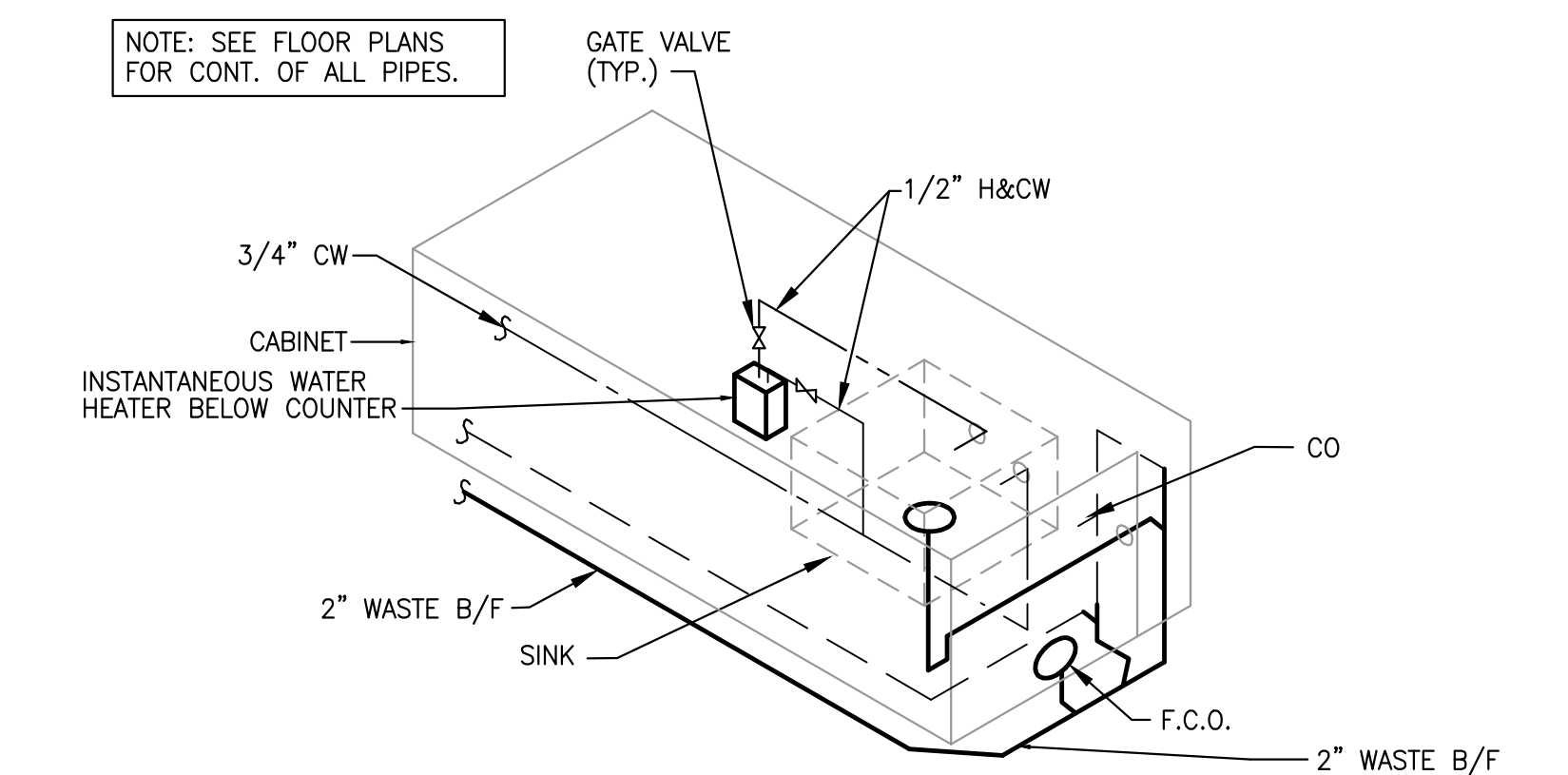
LEGEND	
---	EXISTING WORK
---	NEW WORK
---	WORK TO BE REMOVED
■	FLOOR DRAIN
⌋	HOSE BIBB
⊙	FLOOR CLEAN-OUT
⊞	WALL CLEAN-OUT
---	SANITARY
---	HW
---	CW
---	GAS
---	VENT

WATER HEATER SCHEDULE

I.D. TAG	TYPE OF WATER HEATER	TANK CAPACITY (GALLONS)	RECOVERY @ 56°F (GPM)	POWER INPUT	ELEC. CHAR. (VOLTS/PHASE)	BASIS OF DESIGN	REMARKS
IWH-1-1	INSTANTANEOUS	N/A	0.75	6.0 KW	277/1	EEMAX EX6077	
IWH-1-2	INSTANTANEOUS	N/A	0.5	4.1 KW	277/1	EEMAX EX4277	
IWH-1-3	INSTANTANEOUS	N/A	0.5	4.1 KW	277/1	EEMAX EX4277	
IWH-1-4	INSTANTANEOUS	N/A	0.75	6.0 KW	277/1	EEMAX EX6077	
IWH-1-5	INSTANTANEOUS	N/A	0.5	4.1 KW	277/1	EEMAX EX4277	
IWH-2-1	INSTANTANEOUS	N/A	0.75	6.0 KW	277/1	EEMAX EX6077	
IWH-2-2	INSTANTANEOUS	N/A	0.5	4.1 KW	277/1	EEMAX EX4277	
IWH-2-3	INSTANTANEOUS	N/A	0.5	4.1 KW	277/1	EEMAX EX4277	
IWH-2-4	INSTANTANEOUS	N/A	0.75	6.0 KW	277/1	EEMAX EX6077	

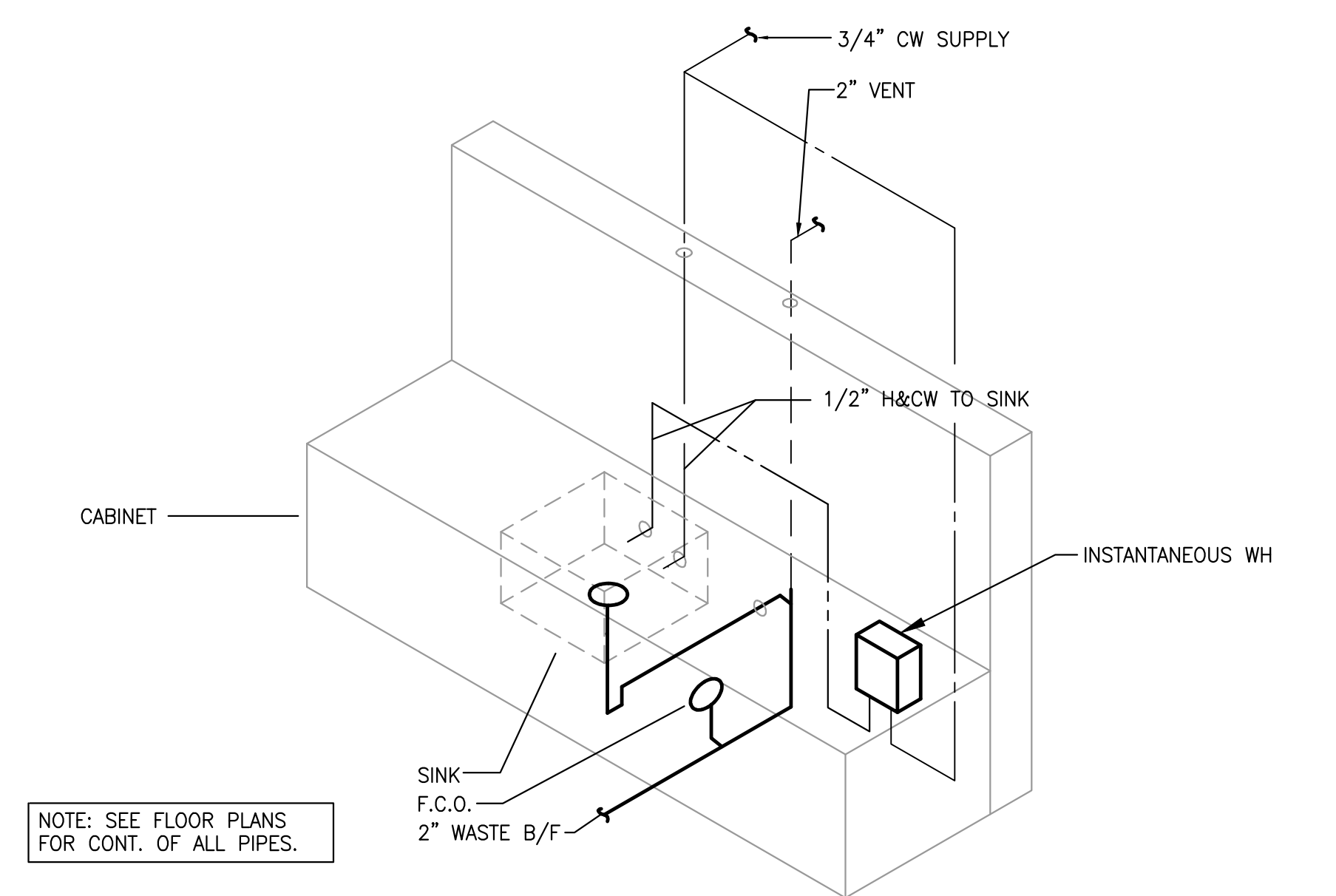
FIXTURE SCHEDULE

DESCRIPTION	SANITARY/WASTE	VENT	CW	HW
WATER CLOSET (P-1, P-1H)	4"	2"	1-1/4"	---
LAVATORY (P-2, P-2A)	2"	1-1/2"	1/2"	1/2"
DRINKING FOUNTAIN (P-4)	2"	1-1/2"	1/2"	1/2"
BREAK SINK (P-5)	2"	1-1/2"	1/2"	1/2"
WELLNESS ROOM SINK (P-6)	2"	1-1/2"	1/2"	1/2"
FLOOR DRAIN	3"	2"	TRAP PRIMER	---



2 ISLAND SINK DETAIL
P1.002 NO SCALE

NOTE: SINK SHALL BE VENTED PER SECTION 913 OF THE IPC FOR ISLAND FIXTURE VENTING.



NOTE: SEE FLOOR PLANS FOR CONT. OF ALL PIPES.

1 SINK AND WATER HEATER DETAIL
P1.002 NO SCALE

NOTE: SEE ARCHITECTURAL PLANS FOR ACTUAL LAYOUT OF EQUIPMENT



2211 Congress Street
Portland, ME 04122

Gensler

214 North Tryon Street
Suite 2320
Charlotte, NC 28202
United States



Brad J. Rabinowitz, P.E.
420 Mount Lane
Charlotte, NC 28217
Tel 704.357.9333
MEP-JOB# 170358

Date Description
08.18.2017 ISSUE FOR PERMIT AND CONSTRUCTION

Seal / Signature



Project Name

Unum Workplace
Transformation- Phase 1 (HO2)

Project Number

59.6481.000

Description

SPECIFICATIONS, NOTES AND DETAILS
- PLUMBING

Scale

P1.002