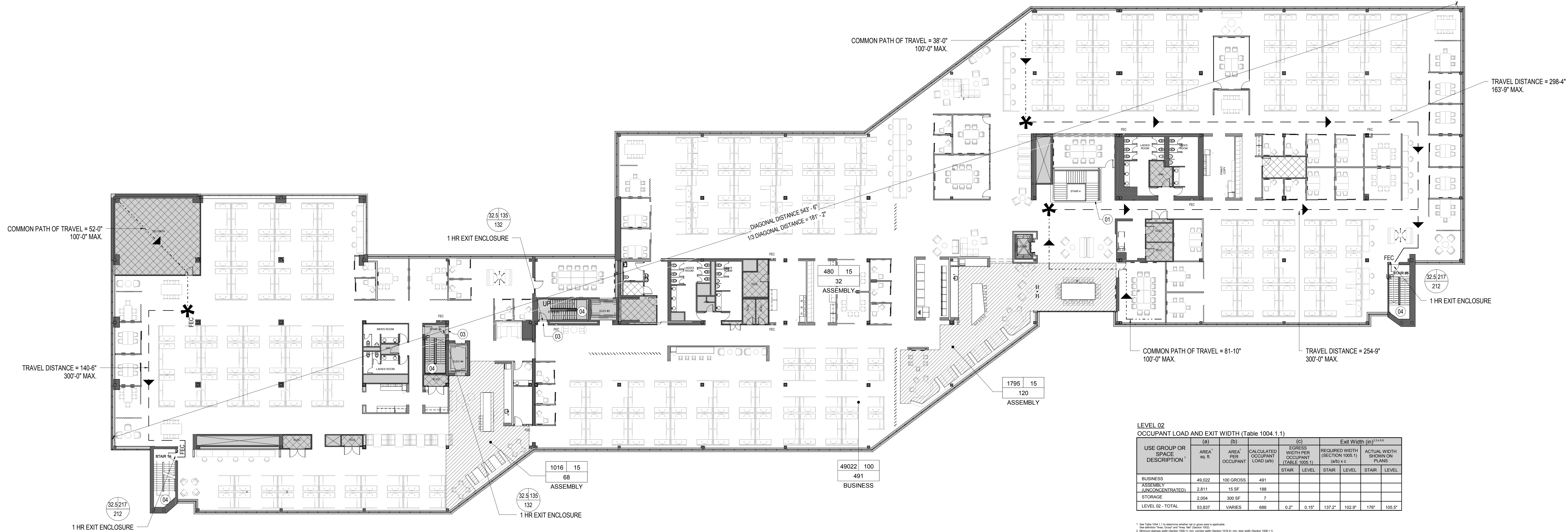


SHEET NOTES

- 01 DRAFT CURTAIN & CLOSELY SPACED SPRINKLER HEADS PER IBC 708.2
- 03 THE CLEAR EXIT WIDTH FOR THIS 32.5' CLR DOOR IS CALCULATED AT 20.25' DUE TO TWO EXIT STAIRS UNLOADING TO A SINGLE 40.5' EXTERIOR DOOR AT FLOOR BELOW.
- 04 EXISTING STAIRS AND EXISTING GUARDS ARE COMPLIANT TO NFPA 101 7.2.2, EXCEEDING THE 30" MIN HEIGHT REQUIREMENT FOR GUARDS.



LEVEL 02  
OCCUPANT LOAD AND EXIT WIDTH (Table 1004.1.1)

USE GROUP OR SPACE DESCRIPTION <sup>1</sup>	AREA <sup>2</sup> sq. ft.	AREA PER OCCUPANT	CALCULATED OCCUPANT LOAD (a/s) <sup>3</sup>	EGRESS WIDTH PER OCCUPANT (TABLE 1005.1)				Exit Width (a/s) <sup>4,5,6</sup>			
				STAIR	LEVEL	STAIR	LEVEL	STAIR	LEVEL		
BUSINESS	49,022	100 GROSS	491								
ASSEMBLY (UNCONCENTRATED)	2,811	15 SF	188								
STORAGE	2,004	300 SF	7								
LEVEL 02 - TOTAL	53,837	VARIES	686	0.2'	0.15'	137.2"	102.9"	170"	105.9"		

1. See Table 1004.1.1 for assembly seating and all gross area is applicable.  
2. See Section 1004.1.1 for gross area.  
3. Minimum width of 20 inches per occupant (Section 1005.1).  
4. See Section 1005.1 for egress width.  
5. The area of any space of egress shall not reduce the available capacity to less than 50 percent of the area required (Section 1005.1).  
6. Assembly occupant load: 15/sf.

GENERAL NOTES

- TRAVEL DISTANCE
- COMMON PATH OF TRAVEL
- \* POINT OF DECISION
- AREA NOT IN CONTRACT
- AREA CALCULATION
- AREA PER OCCUPANT [1004.1.1]
- OCCUPANCY (PEOPLE)
- CLEAR EXIT WIDTH AT DOOR
- MAXIMUM EGRESS CAPACITY AT DOOR [1005.1]
- ACTUAL EGRESS COUNT AT THIS DOOR
- [CR] CARD READER
- [EM] ELECTROMAGNETIC EGRESS LOCK PROVIDED WITH PUSH TO EGRESS BUTTON AND MOTION SENSOR
- [DE] 15 SECOND DELAYED EGRESS

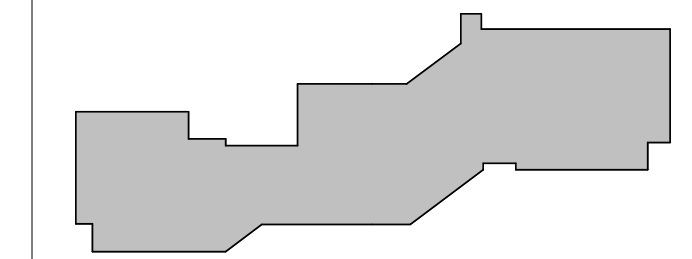
Date Description  
08/18/17 ISSUE FOR PERMIT & CONSTRUCTION

OCCUPANCY CLASSIFICATION LEGEND

- ▨ ASSEMBLY (UNCONCENTRATED) 1 PERSON / 15 SF
- BUSINESS (GENERAL) 1 PERSON / 100 SF
- ▩ ACCESSORY STORAGE 1 PERSON / 300 SF

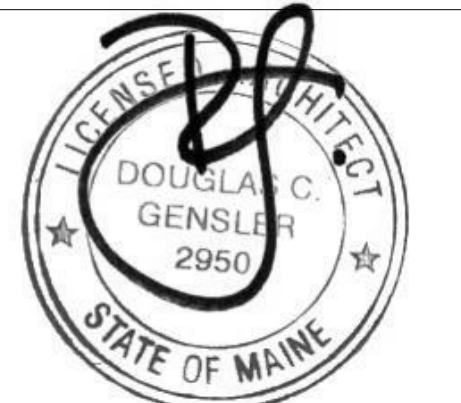
KEY PLAN

Scale  
As indicated



1 LIFE SAFETY PLAN - LEVEL 02  
SCALE: 1/16" = 1'-0"

Seal / Signature



Project Name  
Unum Workplace Transformation- Phase 1 (H02)  
Project Number  
59.6481.003  
Description  
LIFE SAFETY PLAN - LEVEL 02 - H02

LS02.102