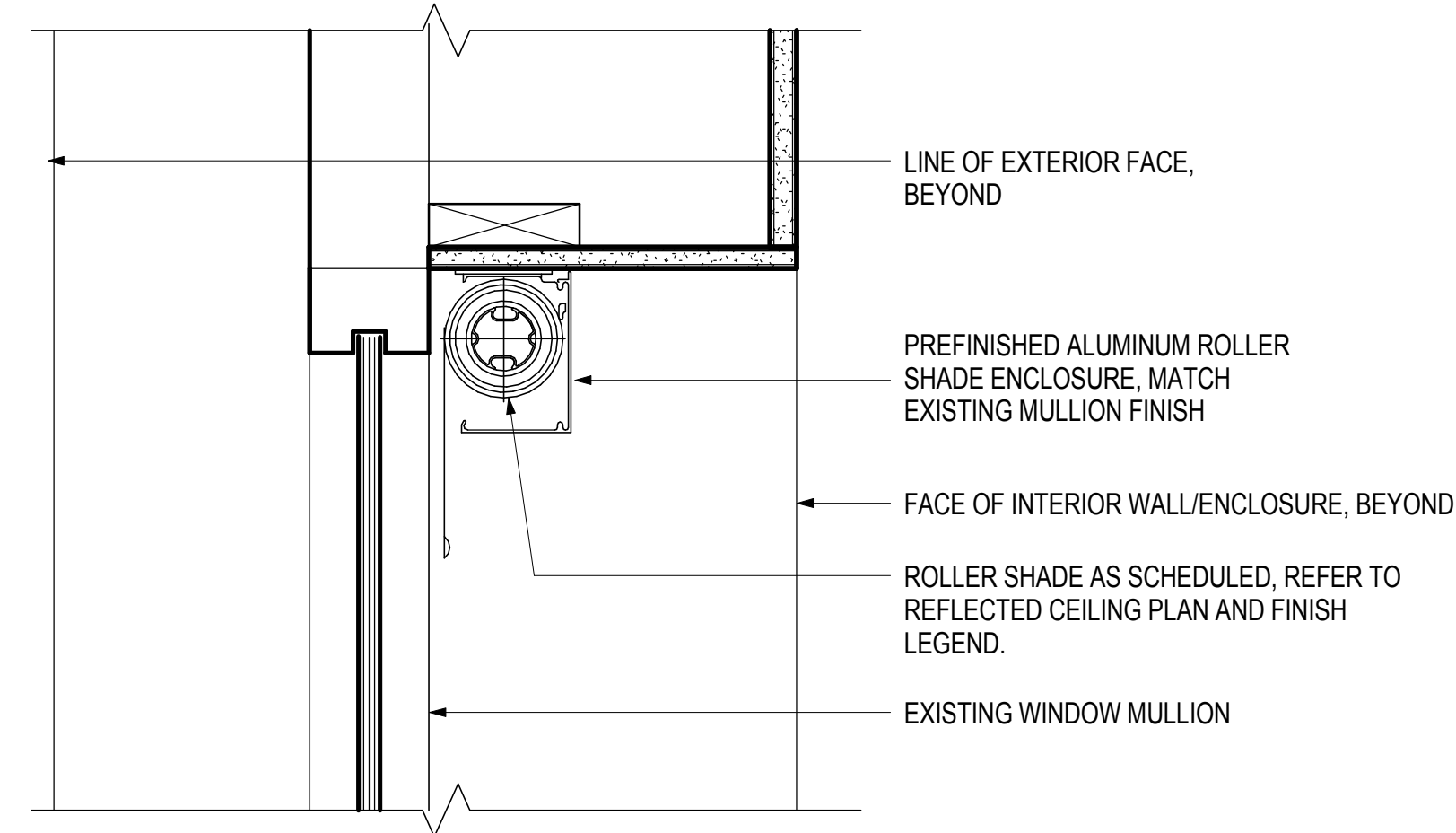
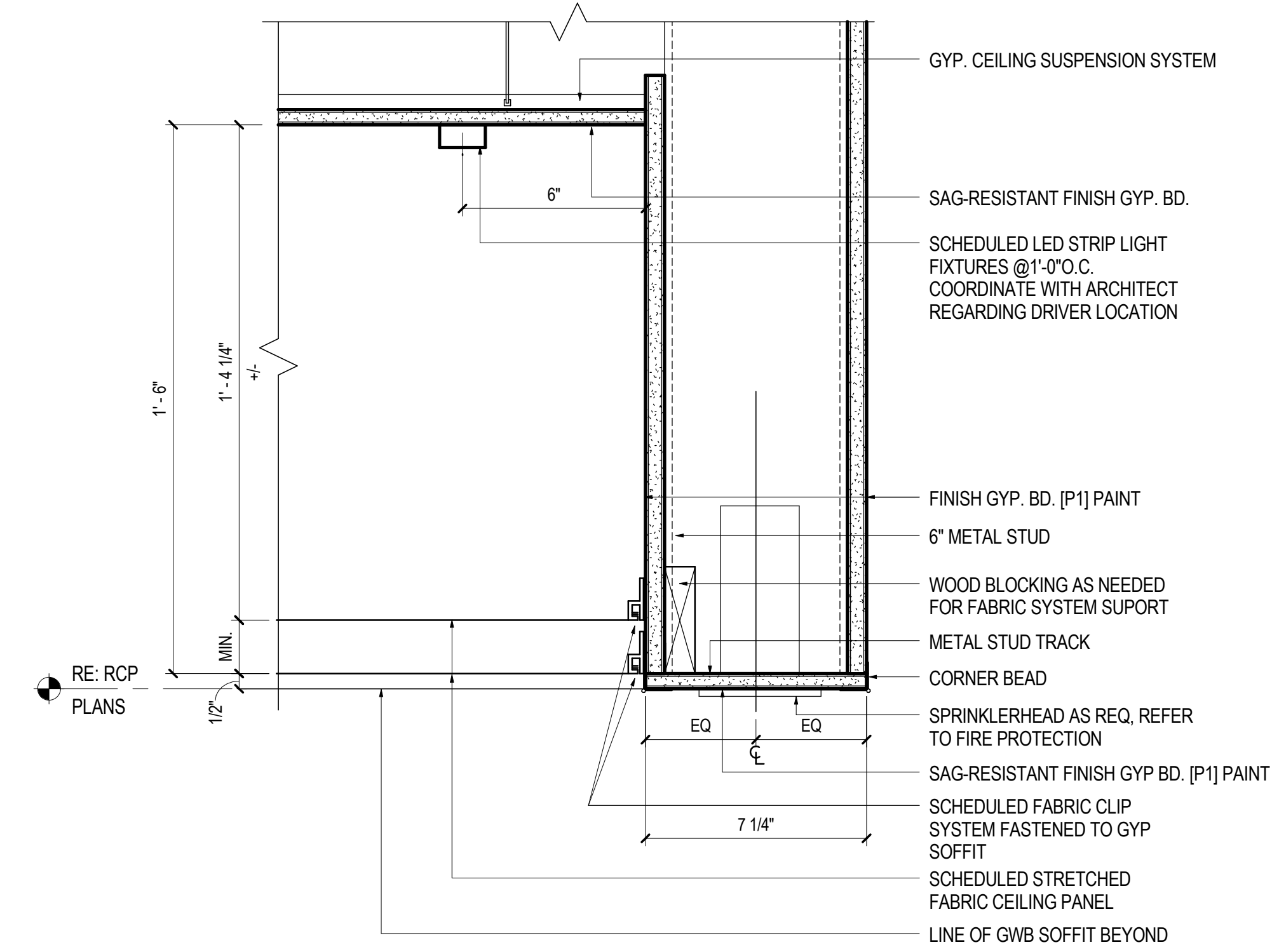


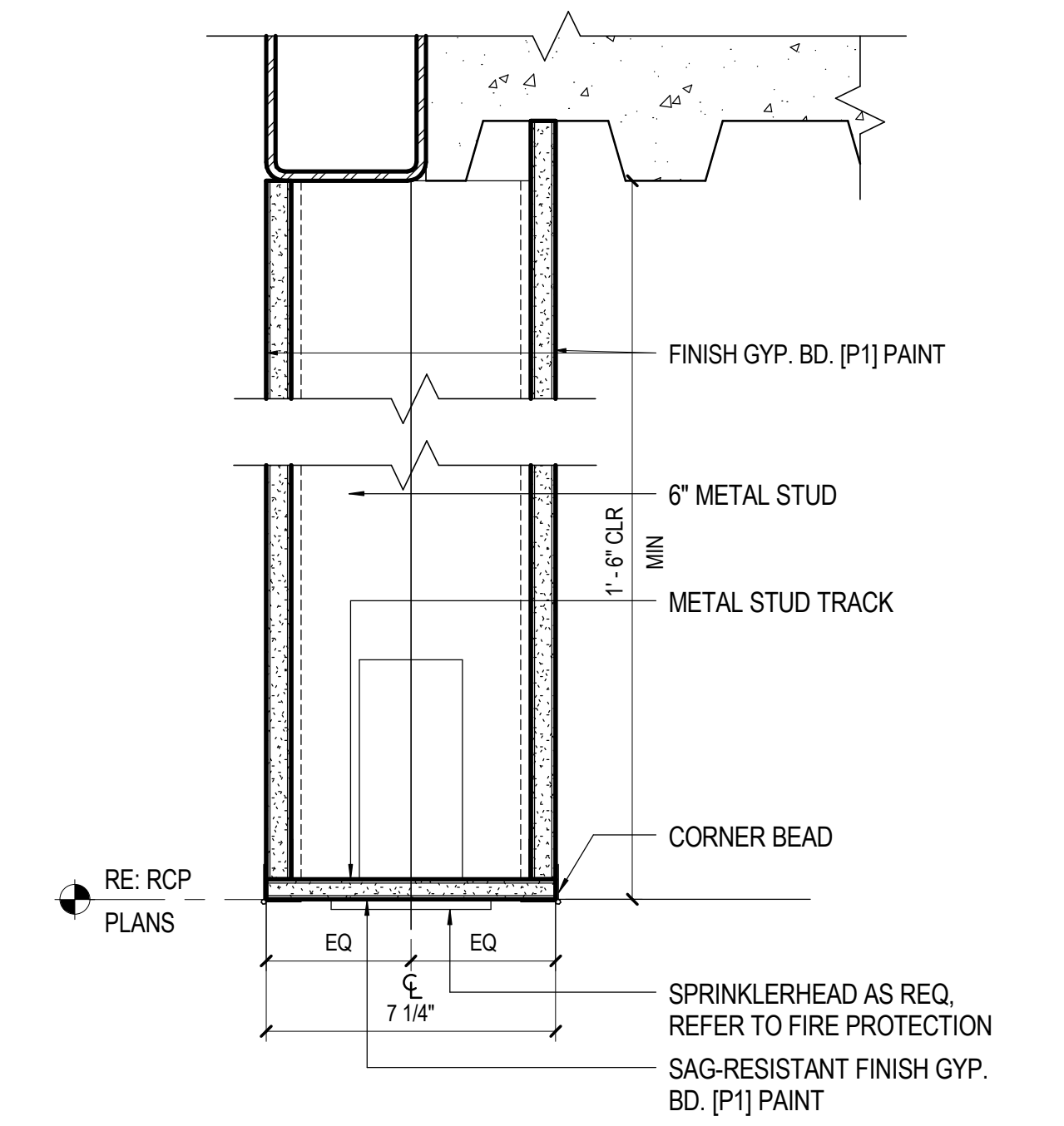
13 CEILING DETAIL - FLUSH GYP HEADER
SCALE: 3" = 1'-0"



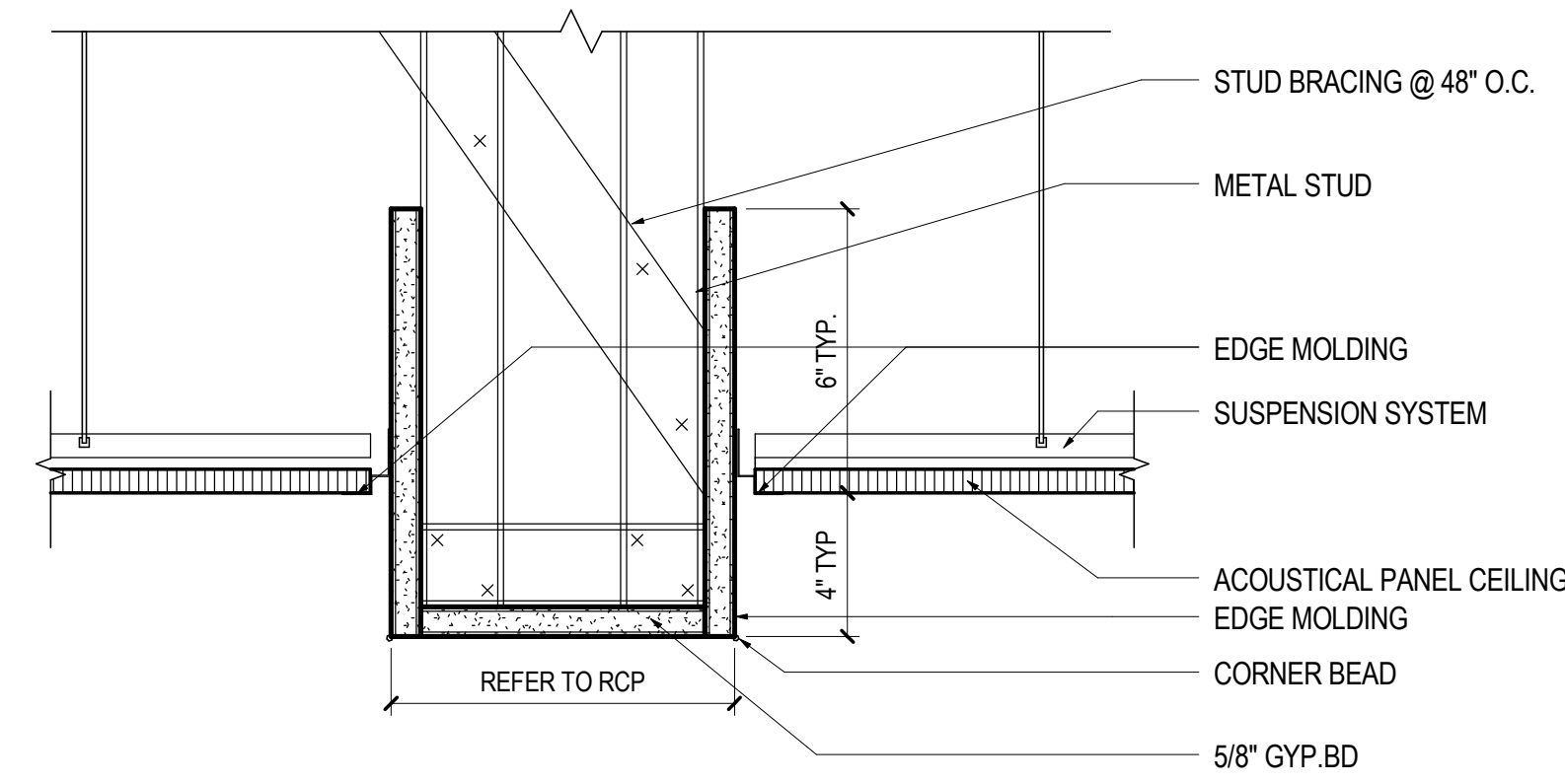
09 TYPICAL DETAIL - ROLLER SHADE AT ALL PERIMETER WINDOWS
SCALE: 3" = 1'-0"



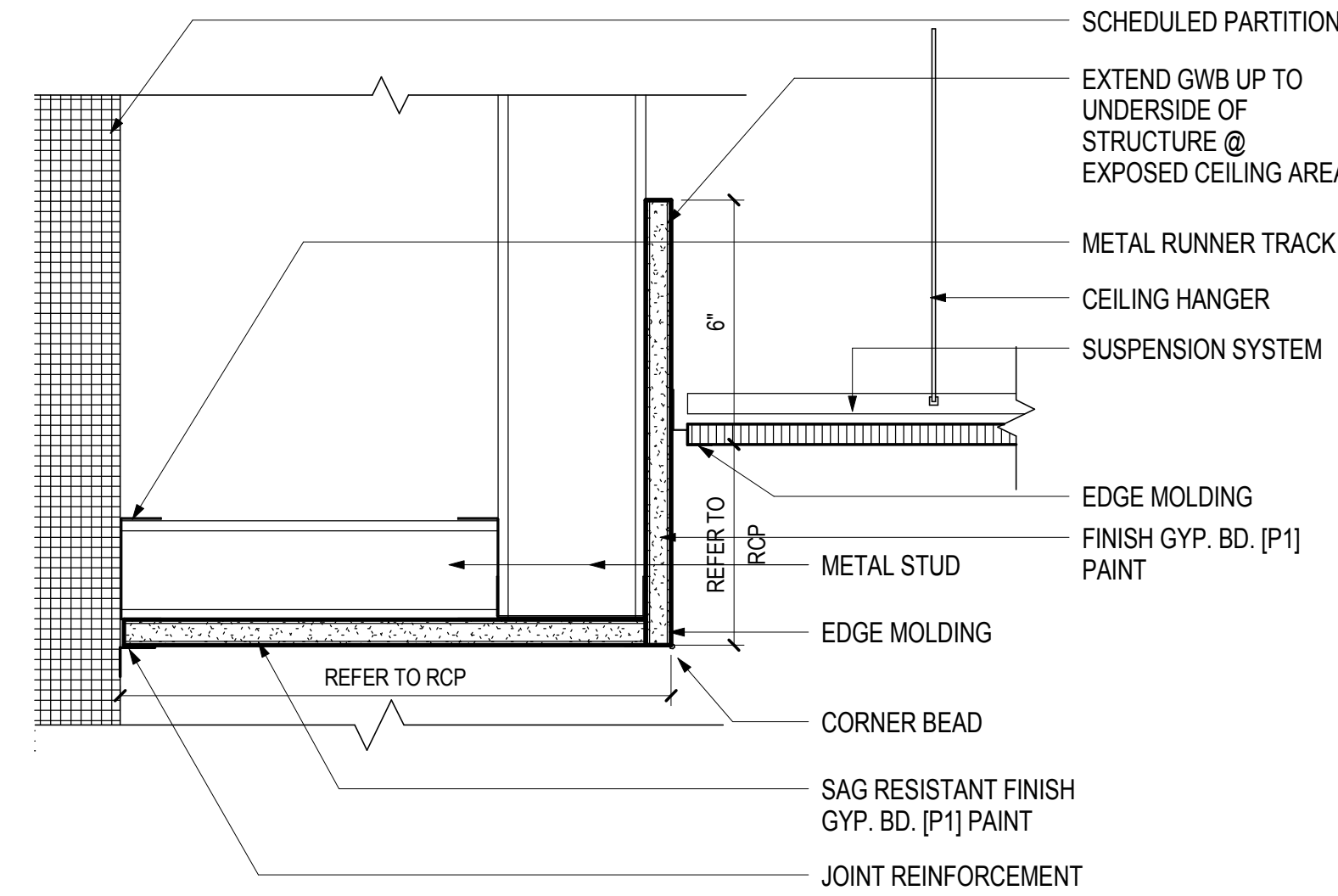
05 CEILING DETAIL - STAIR CLIPSO LIGHT
SCALE: 3" = 1'-0"



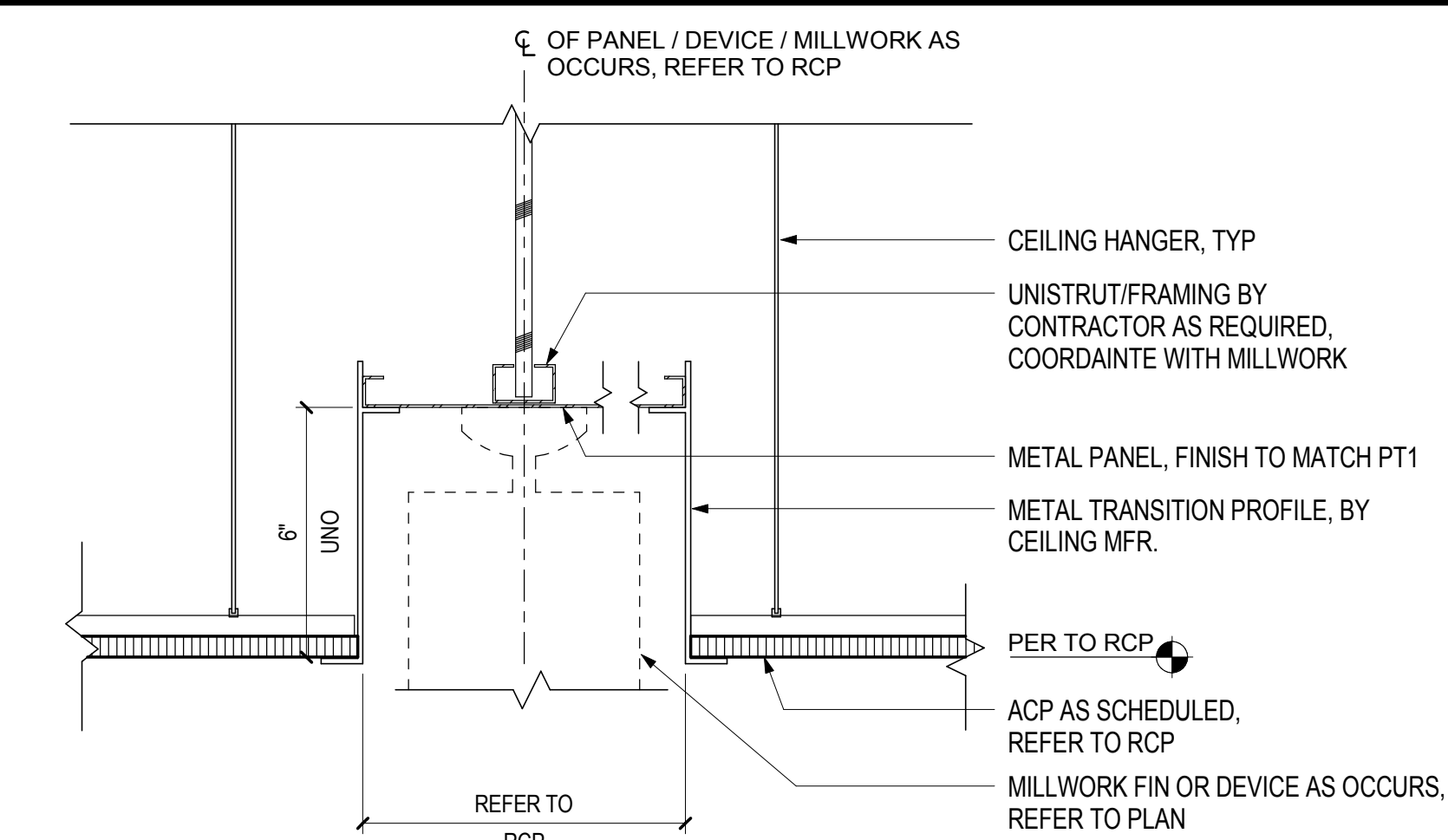
01 CEILING DETAIL - CEILING SHROUD
SCALE: 3" = 1'-0"



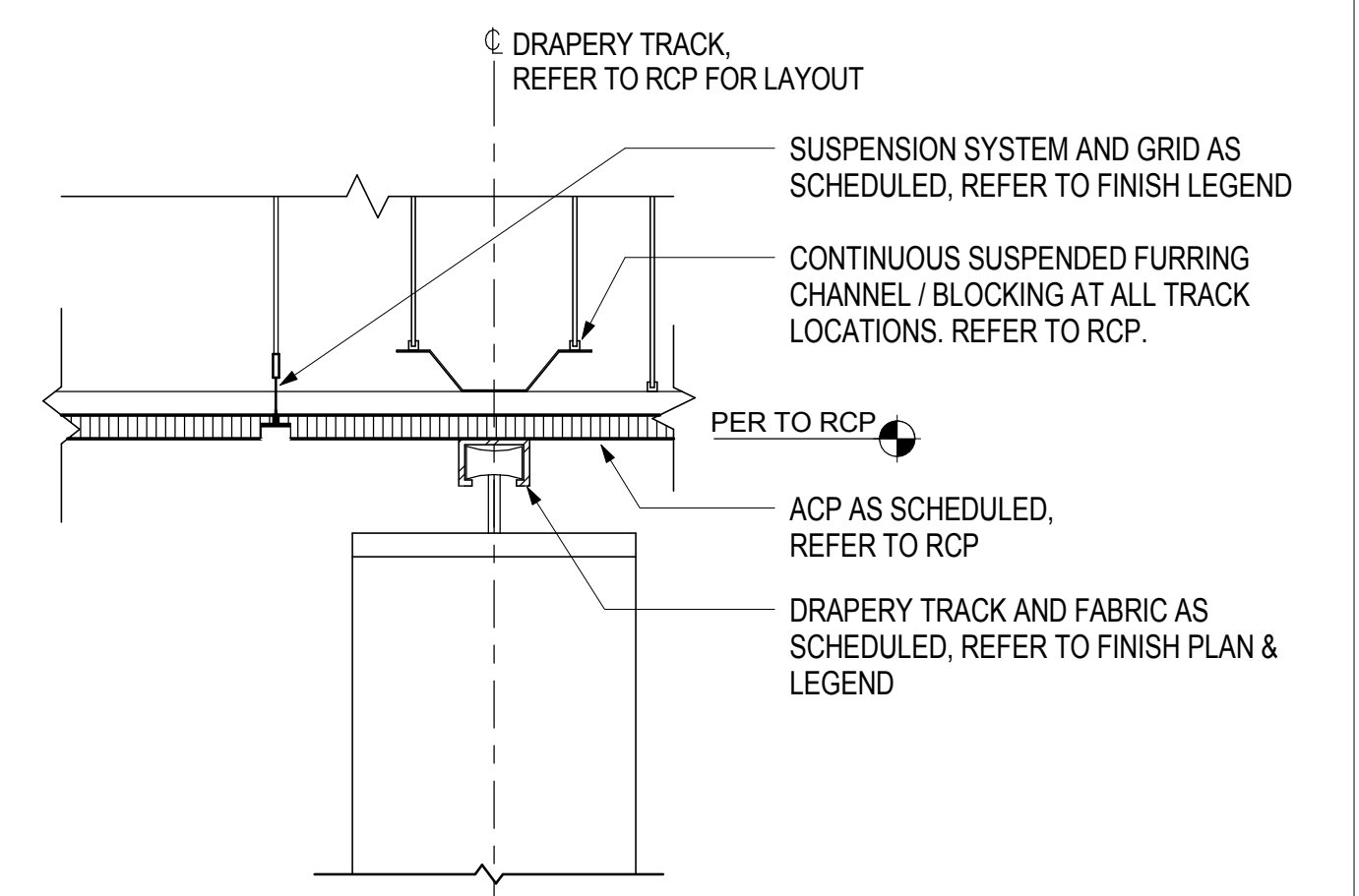
14 CEILING DETAIL - GYP HEADER
SCALE: 3" = 1'-0"



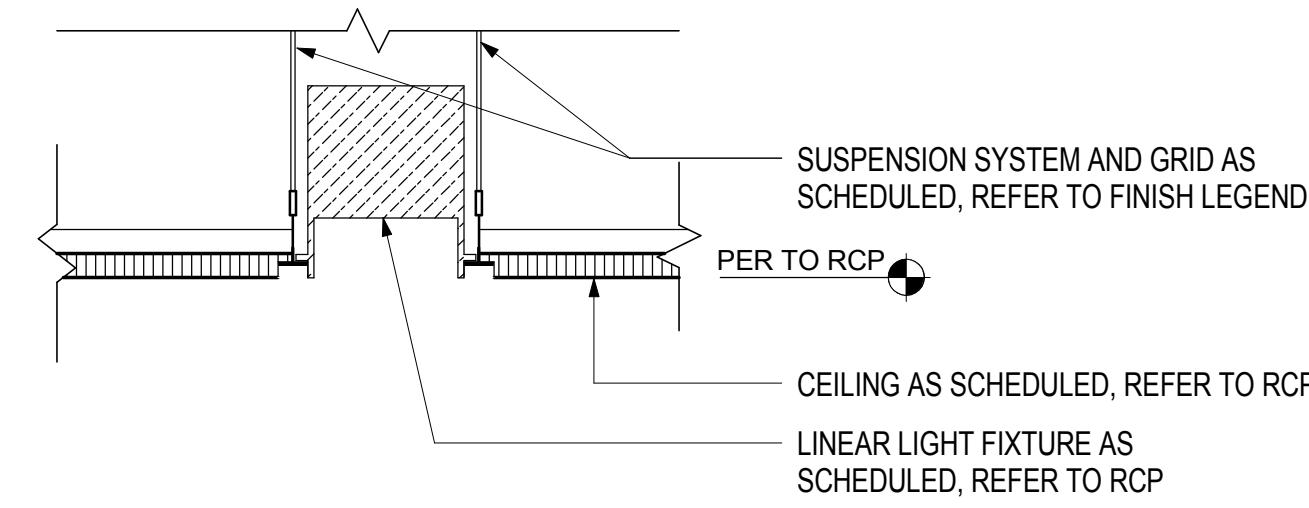
10 TYP CLG DTL - ACP TO GWB STEPPED TRANSITION
SCALE: 3" = 1'-0"



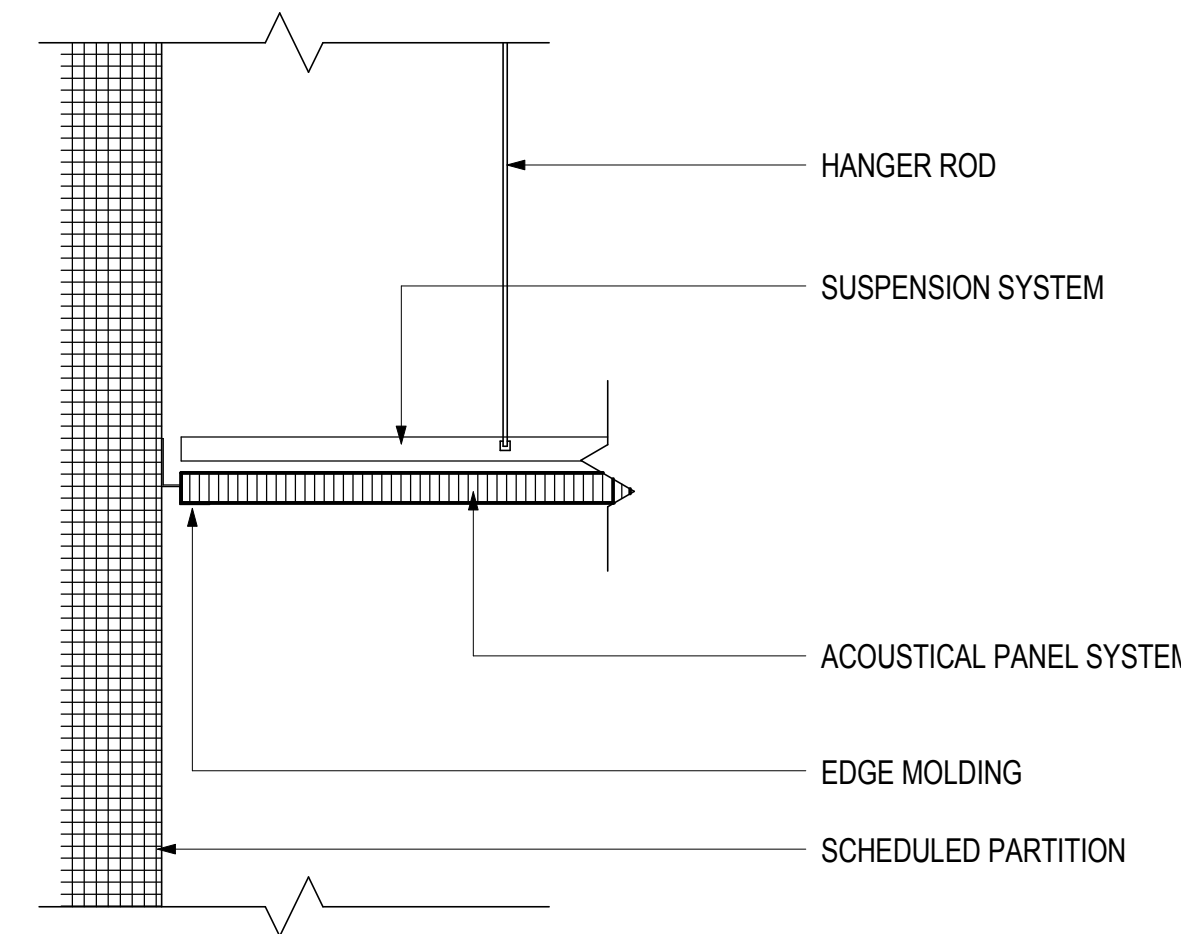
06 CLG DTL - METAL PANEL RECESS
SCALE: 3" = 1'-0"



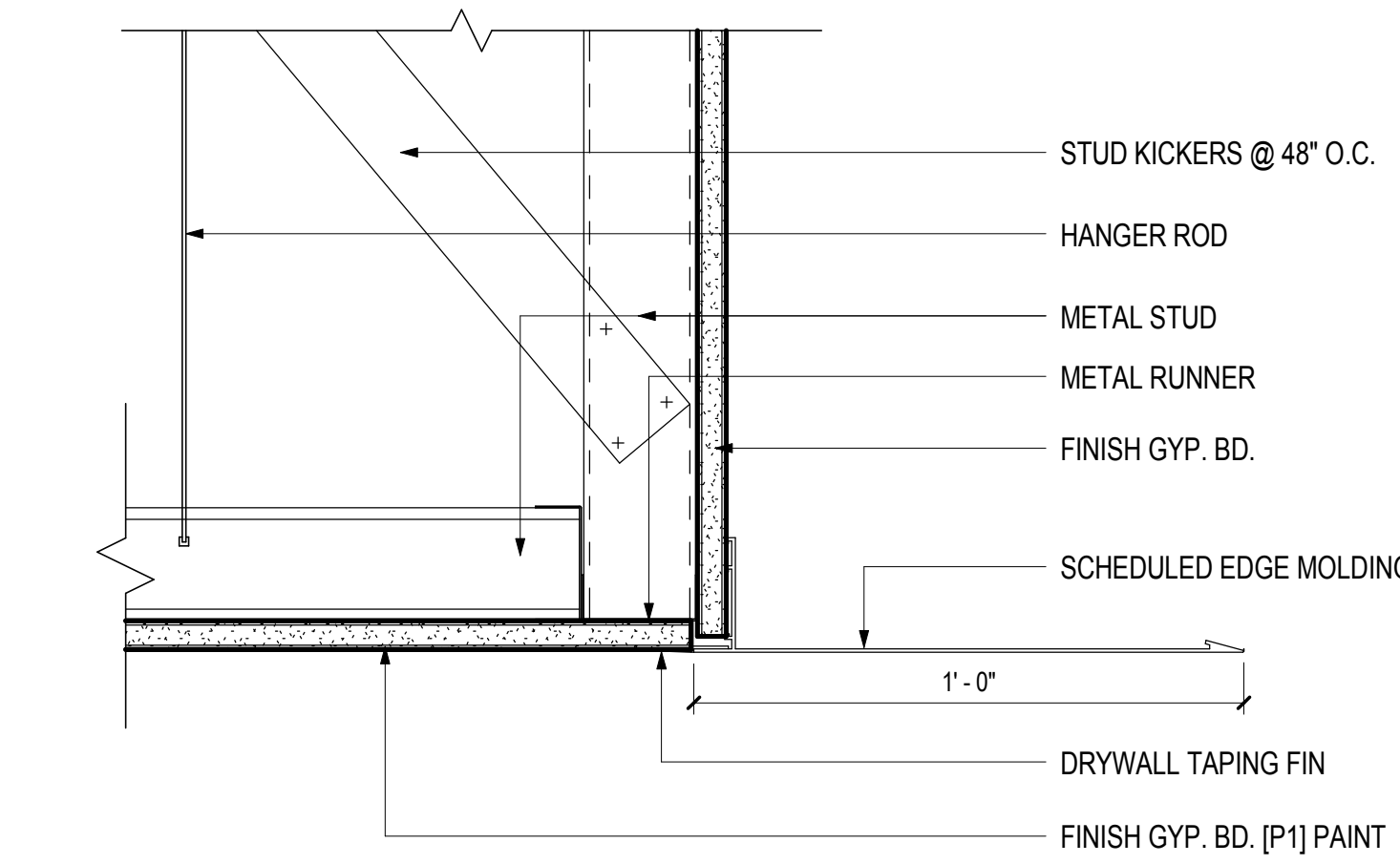
02 TYP CLG DTL - DRAPERY CURTAIN TRACK
SCALE: 3" = 1'-0"



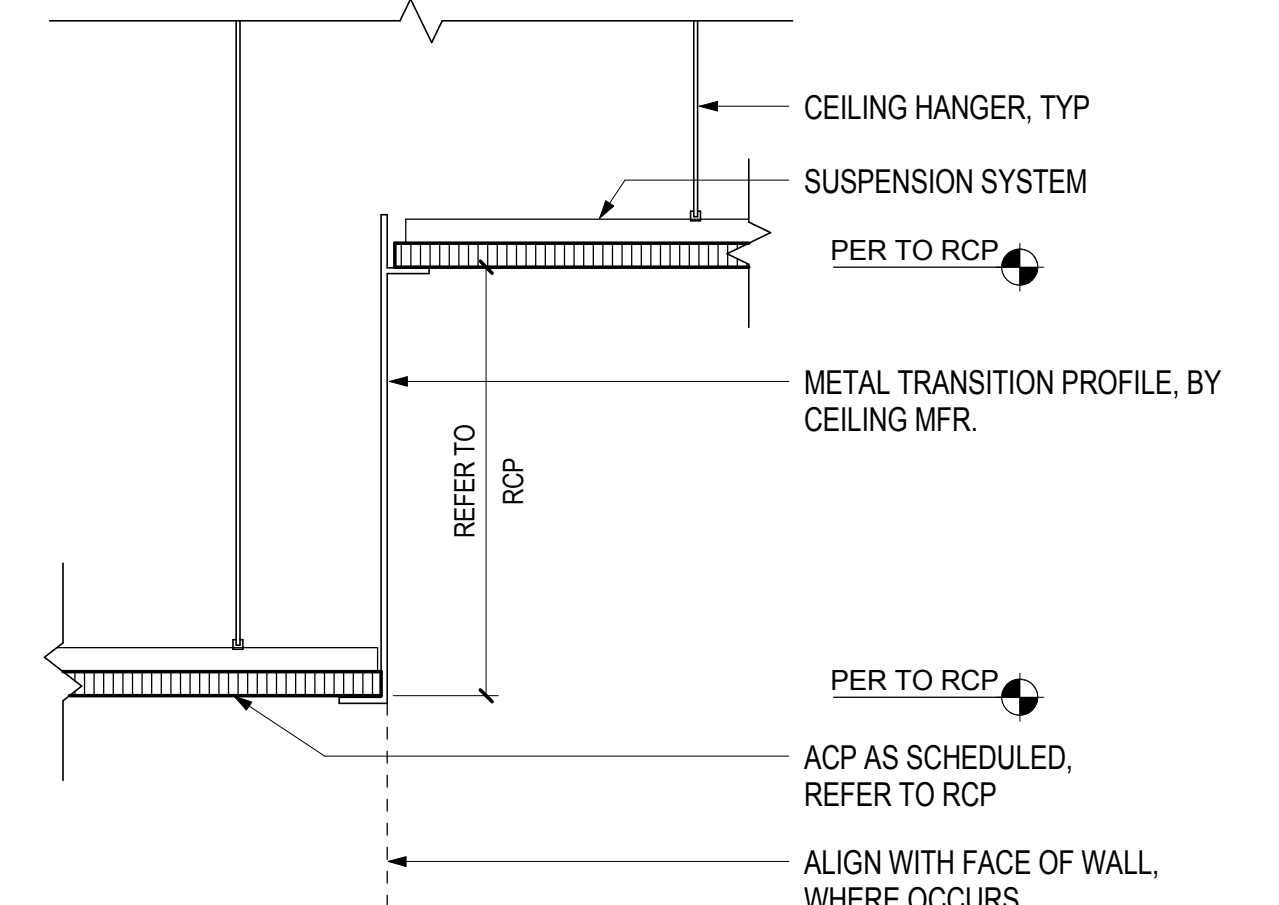
15 TYP CLG DTL - LINEAR LIGHT @ ACT CEILING
SCALE: 3" = 1'-0"



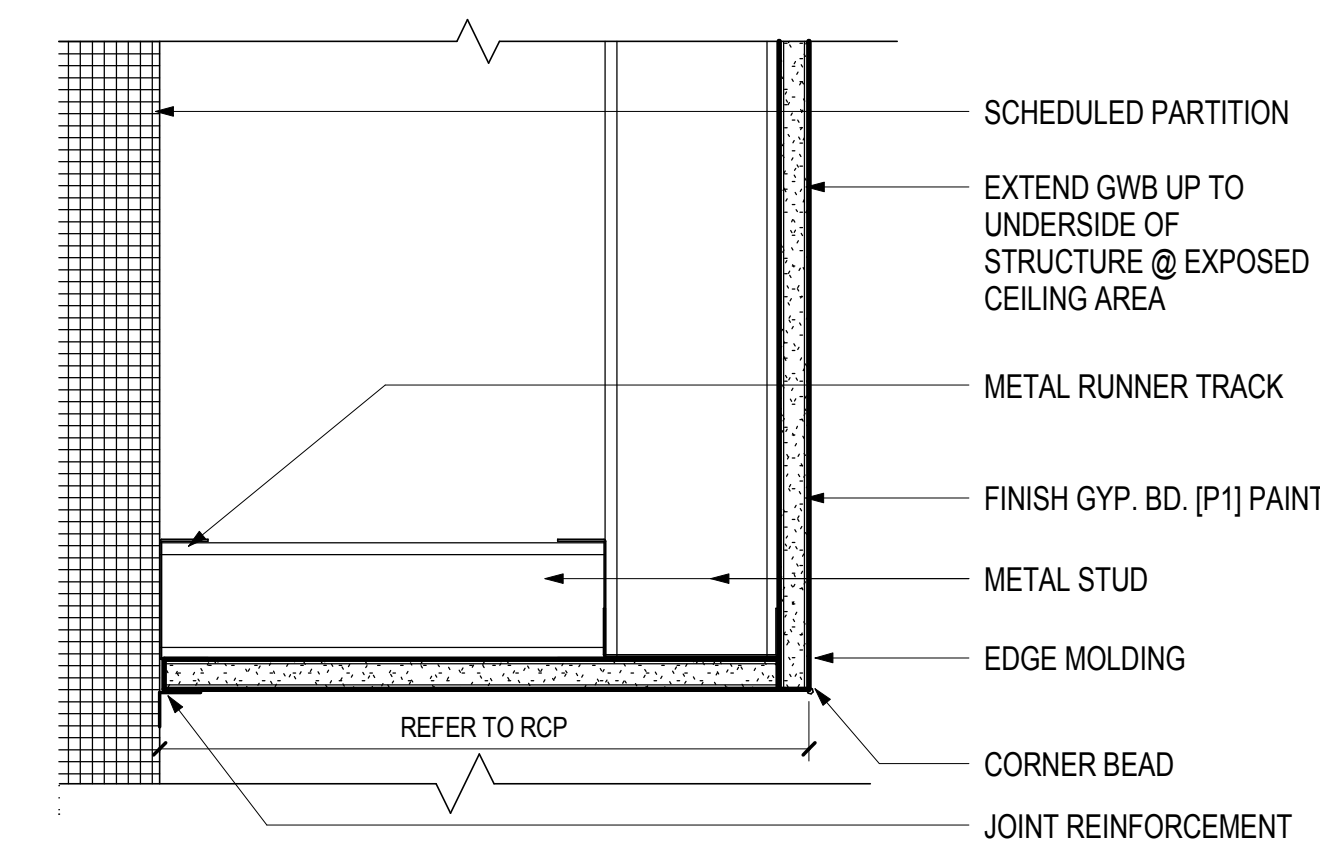
11 TYPICAL CEILING DETAIL - WALL TO APC
SCALE: 3" = 1'-0"



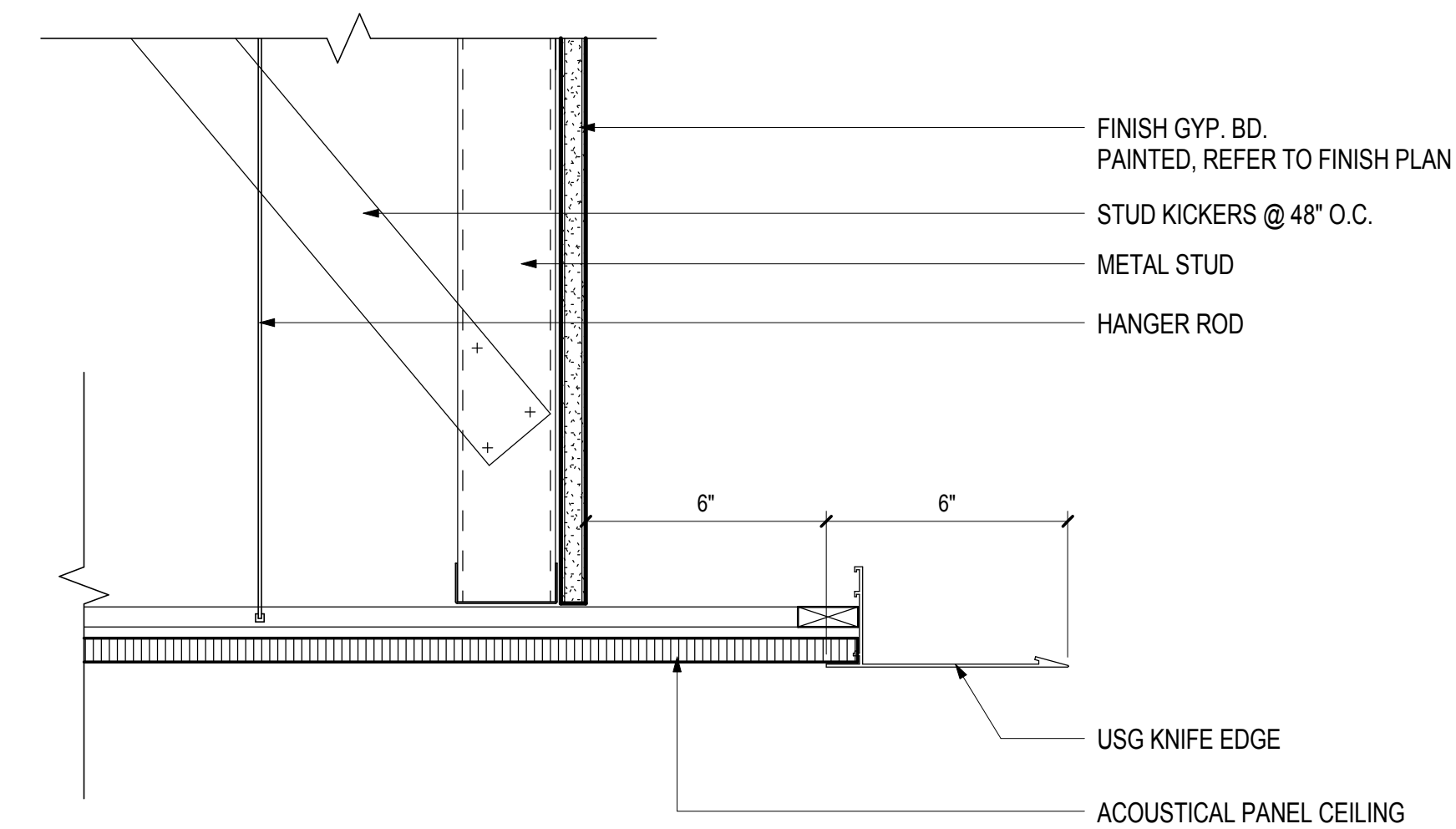
07 CEILING DETAIL - PERIMETER OPEN CEILING EDGE
SCALE: 3" = 1'-0"



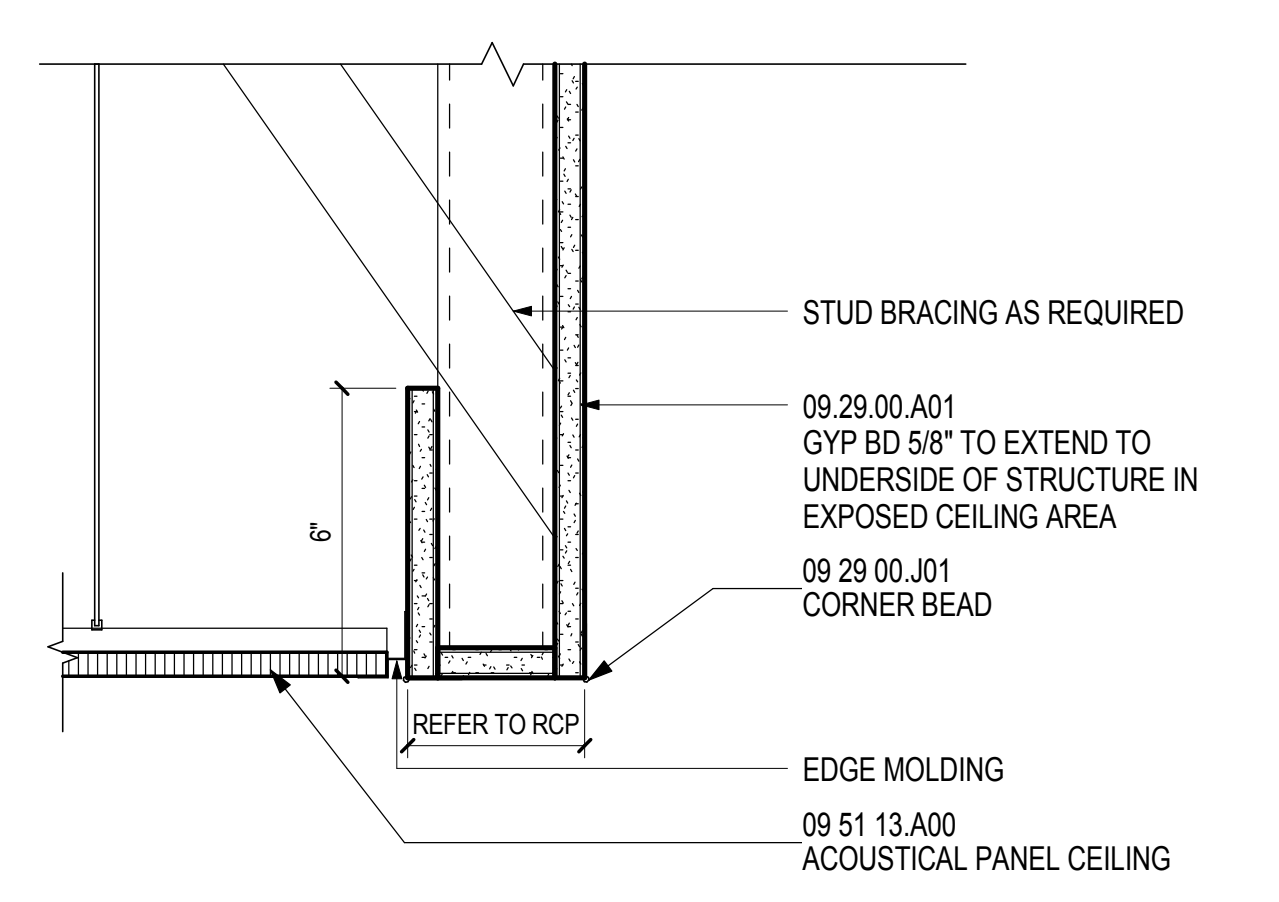
03 TYP CLG DTL - ACP TO ACP STEP
SCALE: 3" = 1'-0"



12 CEILING DETAIL - PERIMETER OPEN CEILING GWB
SCALE: 3" = 1'-0"



08 CEILING DETAIL - APC WITH GYP TO DECK
SCALE: 3" = 1'-0"



04 CLG DTL - GYP HEADER TO OPEN CEILING
SCALE: 3" = 1'-0"

