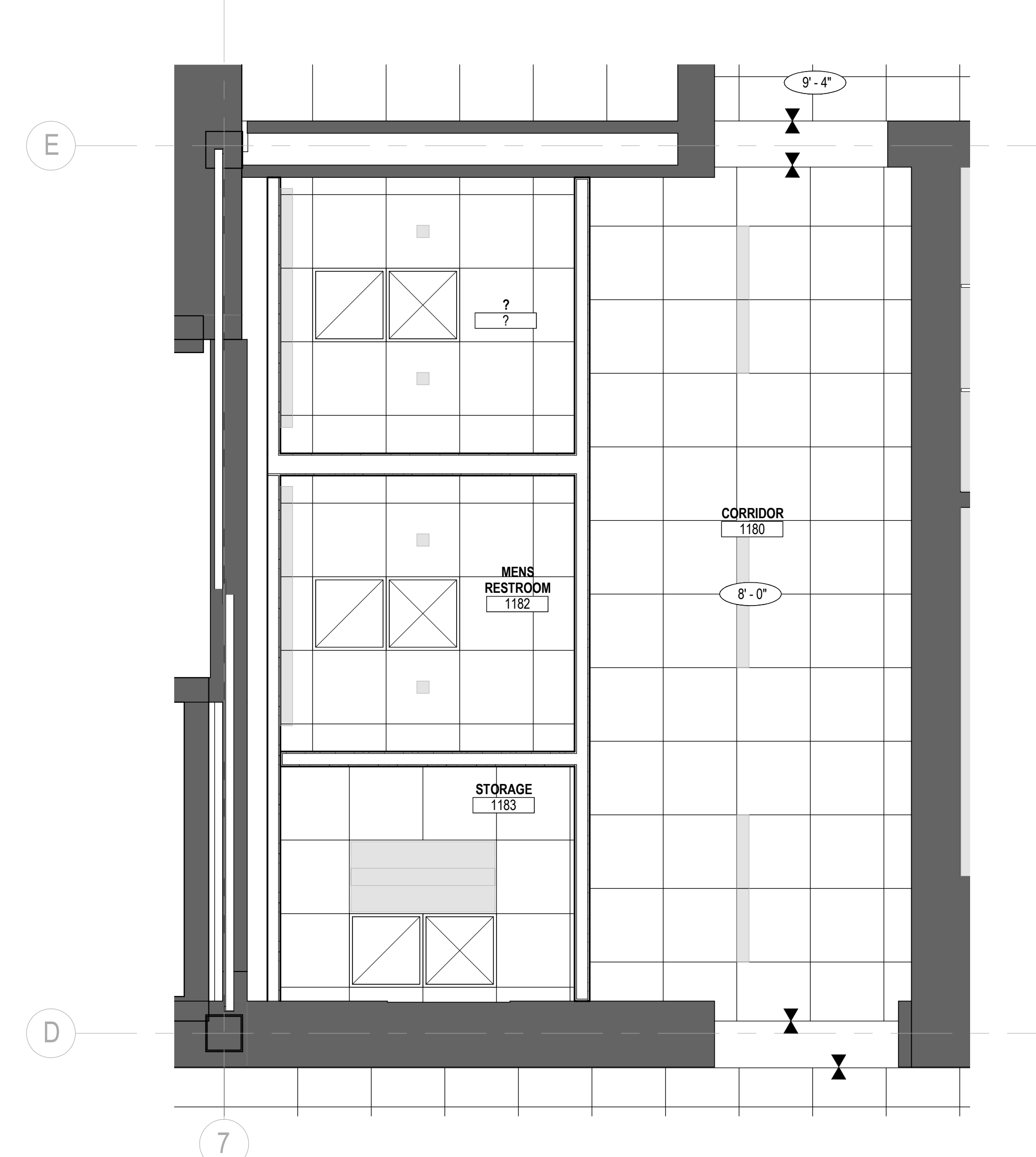
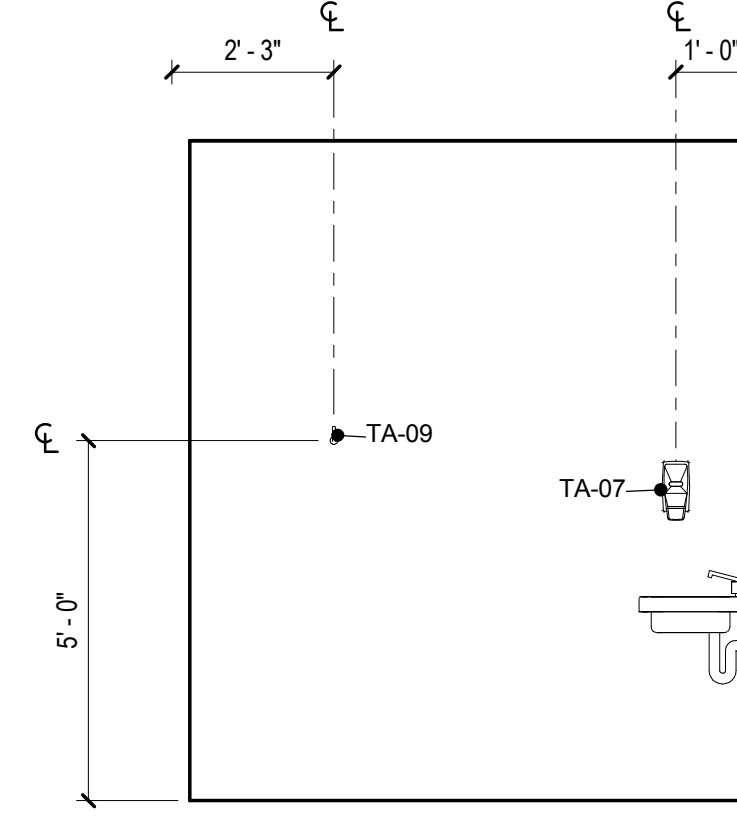


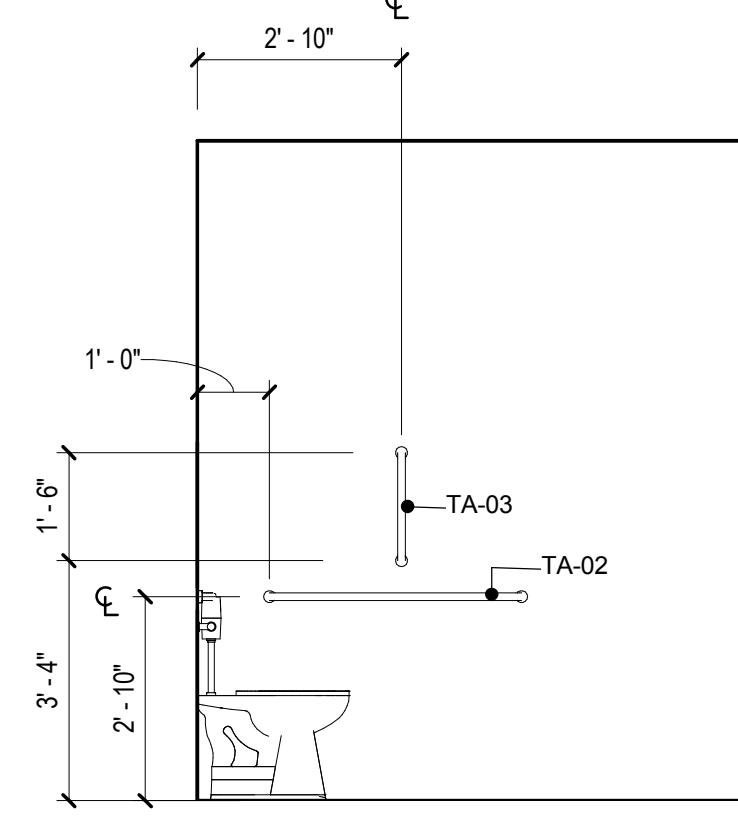
07 LEVEL 01 - ENLARGED PLAN - RESTROOM
SCALE: 3/8" = 1'-0"



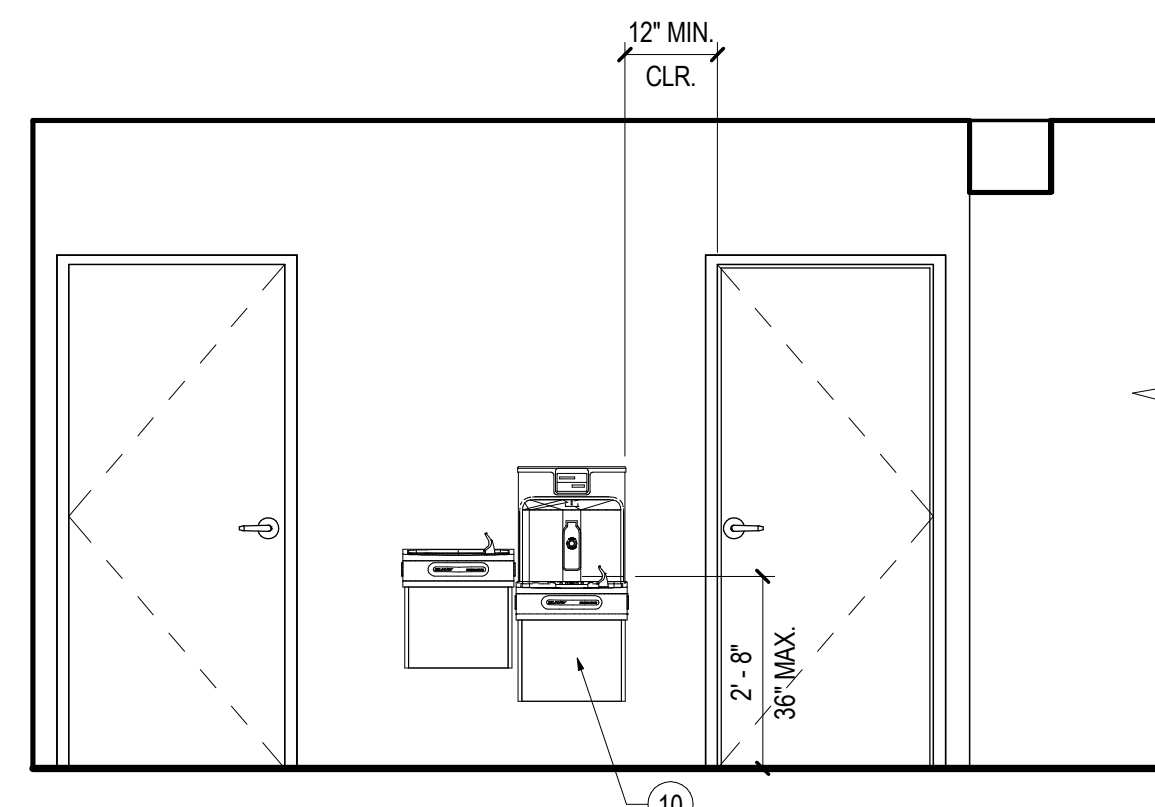
06 LEVEL 01 - ENLARGED RCP - RESTROOM
SCALE: 3/8" = 1'-0"



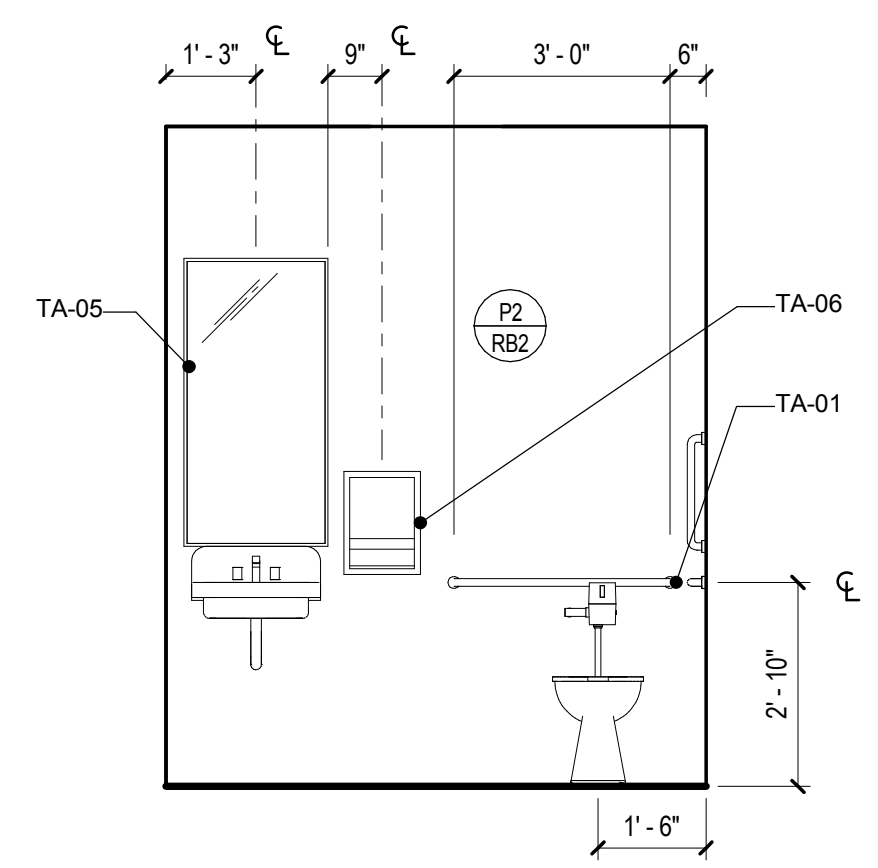
03 1080 RESTROOM - NORTH ELEVATION
SCALE: 3/8" = 1'-0"



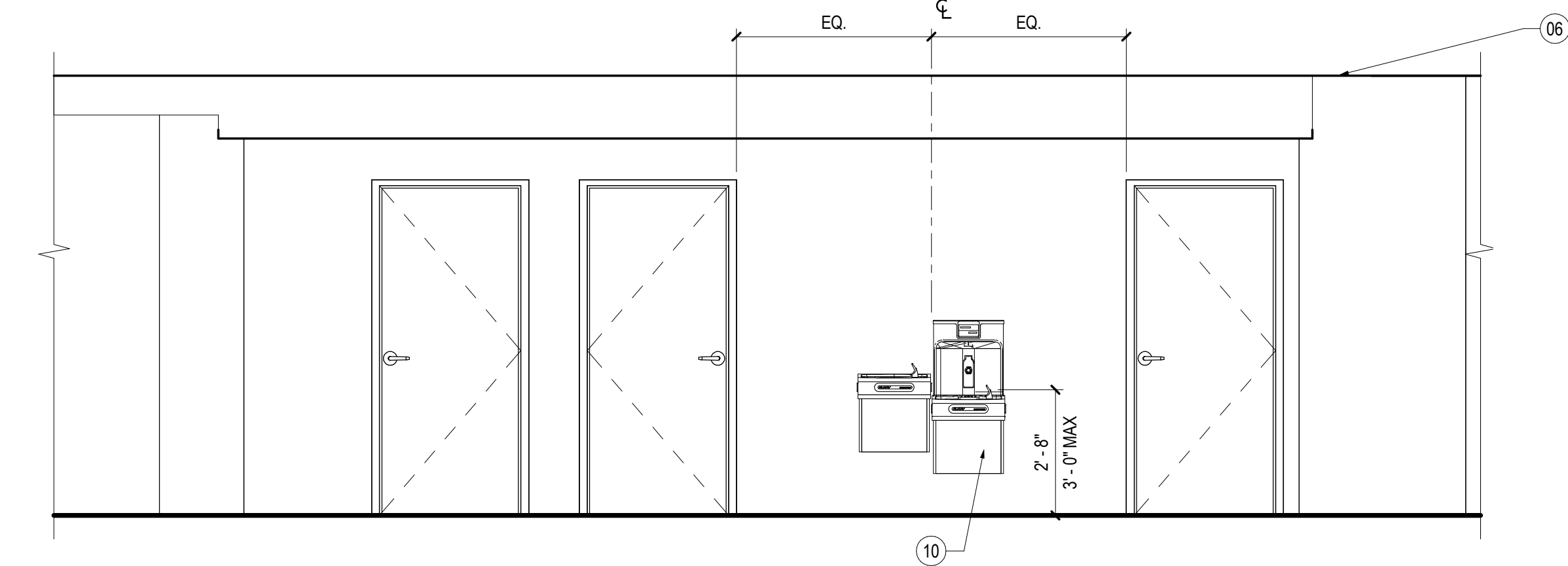
01 1182 RESTROOM - SOUTH ELEVATION
SCALE: 3/8" = 1'-0"



04 2182 LOCKERS - WEST ELEVATION
SCALE: 3/8" = 1'-0"



02 1182 RESTROOM - WEST ELEVATION
SCALE: 3/8" = 1'-0"



05 1180 CORRIDOR - WEST ELEVATION
SCALE: 3/8" = 1'-0"

TOILET ACCESSORY SCHEDULE

Type Mark	Description	Manufacturer
TA-01	36" GRAB BAR	
TA-02	42" GRAB BAR	
TA-03	18" GRAB BAR	
TA-04	TOILET TISSUE DISPENSER	
TA-05	MIRROR W/ FRAME	
TA-06	RECESSED PAPER TOWEL DISPENSER	BOBRICK
TA-07	WALL MOUNTED HAND SOAP DISPENSER	HILLYARD
TA-09	COAT HOOK	

SHEET NOTES

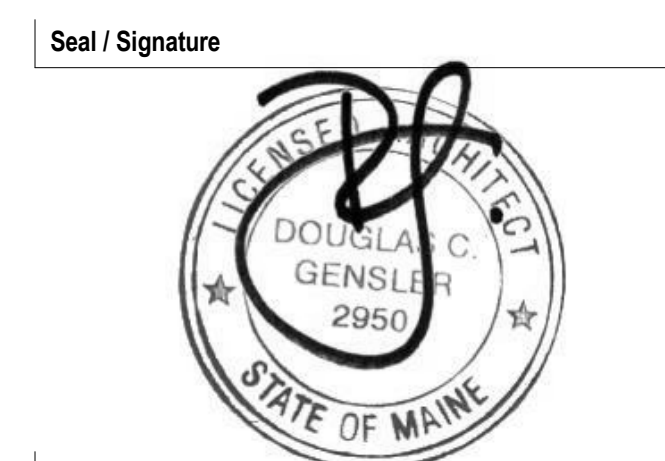
- 06 GYPSUM BOARD SOFFIT (TYP.)
- 10 DRINKING FOUNTAIN. REFER TO PLUMBING DRAWINGS.

GENERAL NOTES

- A. REFER TO SHEETS SERIES A02.100, A02.200 AND I02.100 FOR CONSTRUCTION, REFLECTED CEILING AND FINISH PLAN GENERAL NOTES.
- B. REFER TO FINISH PLAN FOR WALL BASE AS SCHEDULED, TYPICAL.

KEY PLAN

Date	Description
08/18/17	ISSUE FOR PERMIT & CONSTRUCTION



Project Name
Unum Workplace
Transformation- Phase 1 (HO2)
Project Number
59.6481.003
Description
ENLARGED PLANS AND INTERIOR
ELEVATIONS - TOILET - HO2

Scale
3/8" = 1'-0"

A03.300