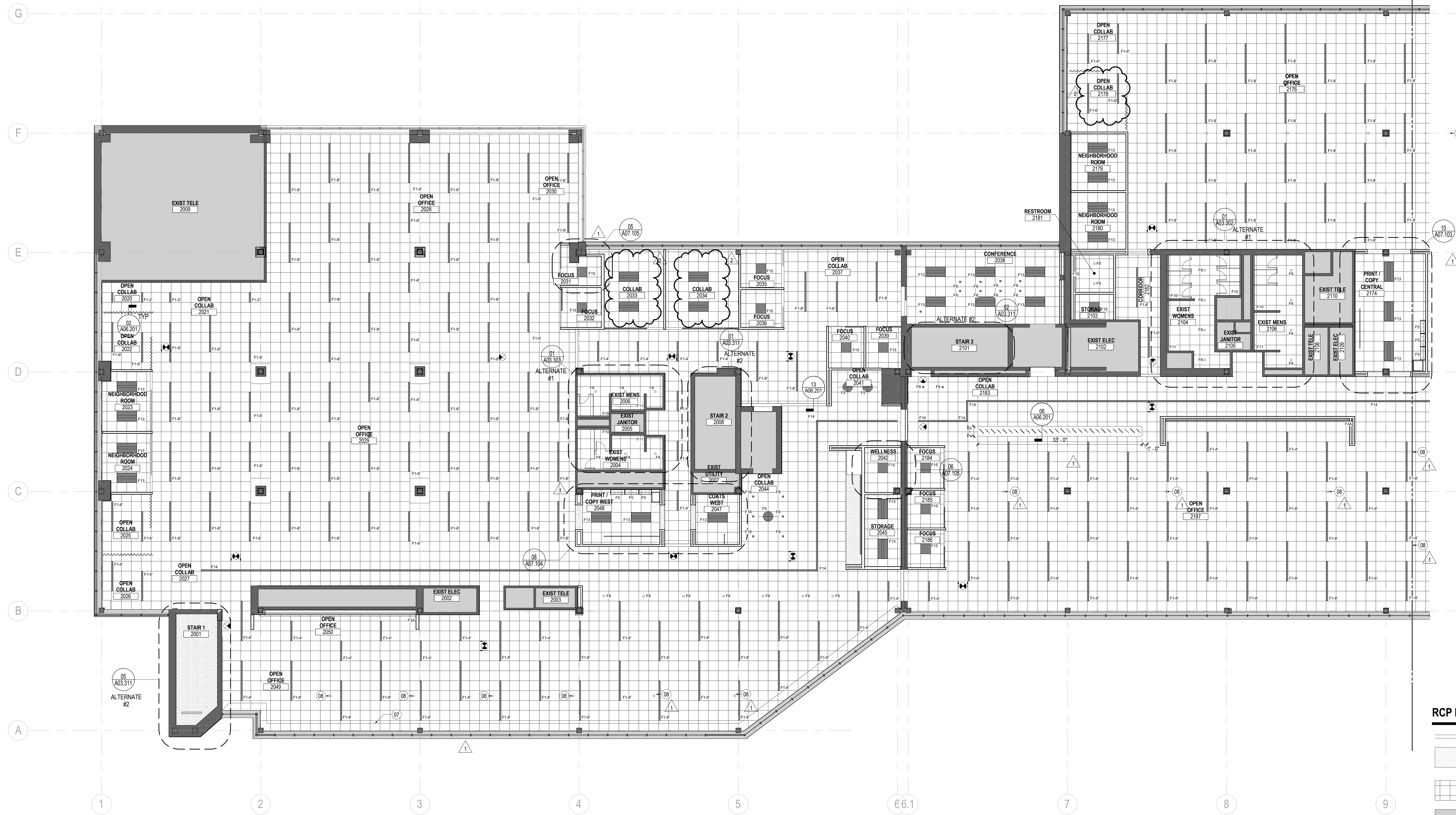


WEST  
EAST



Date	Description
08/18/17	ISSUE FOR PERMIT & CONSTRUCTION
1 09/25/17	ADDENDUM #1
2 09/01/17	ADDENDUM #2

**01 REFLECTED CEILING PLAN - LEVEL 02 - WEST**  
SCALE: 1/8" = 1'-0"

**SHEET NOTES**

- 07 PATCH, REPAIR, AND PREP SOFFIT TO RECEIVE P7
- 08 EXISTING POWER POLE TO BE REUSED, REFER TO FURNITURE PLAN.

**GENERAL NOTES**

- A. ALL CEILINGS TO BE 9'-4", U.N.O.
- B. REFER TO SERIES G00 FOR GRAPHIC SYMBOLS, ABBREVIATIONS, GENERAL NOTES AND TYPICAL MOUNTING DIAGRAMS FOR SWITCHES AND DIMMERS.
- C. DO NOT SCALE DRAWINGS. WRITTEN DIMENSIONS GOVERN. IN CASE OF CONFLICT, NOTIFY ARCHITECT. ARCHITECT'S REFLECTED CEILING PLAN SUPERSEDES ALL OTHERS.
- D. DRAWINGS TO BE READ IN CONJUNCTION WITH LIGHTING FIXTURES SCHEDULE AND SPECIFICATIONS BY ELECTRICAL ENGINEER. IN CASE OF CONFLICT, NOTIFY ARCHITECT PRIOR TO PROCEEDINGS.
- E. REFER TO ENGINEER'S DRAWINGS FOR LIGHTING, DIFFUSERS, SPRINKLERS, FIRE ALARM DEVICES AND OTHER ITEMS IN THE CEILING.
- F. VERIFY LOCATION AND SIZE OF ALL ACCESS PANELS IN GYPSUM CEILINGS WITH ARCHITECT.
- G. ALL LIGHTS, SPRINKLER HEADS, SPEAKERS, EXIT SIGNS, AND OTHER CEILING-MOUNTED DEVICES IN APC TO BE CENTERED IN TILE IN BOTH DIRECTIONS, U.N.O.
- H. PROVIDE SHADOW MOULD AT ALL PERIMETER CONDITIONS OF APC, U.N.O.
- J. ALL GYPSUM BOARD CEILINGS AND SOFFITS TO BE FABRICATED WITH 5/8" SAG-RESISTANT GYPSUM BOARD.
- K. ALL GYPSUM BOARD CEILINGS AND SOFFITS TO BE PAINTED P7, U.N.O.
- L. SUSPENDED CEILING GRID SYSTEM AND ACOUSTIC PANEL TO BE C1, U.N.O.
- M. CENTER CEILING GRID AND TILE IN ROOMS AS SHOWN, U.N.O.
- N. BOTTOM OF ALL SUSPENDED LIGHT FIXTURES TO BE AT 9'-4"
- P. REFER TO ELECTRICAL DRAWINGS FOR LIGHT FIXTURE SCHEDULE
- Q. INSTALL NEW ROLLER SHADES AT ALL EXTERIOR WINDOWS. REFER TO DETAIL 09A06.201 FOR ADDITIONAL INFORMATION.

**RCP LEGEND**

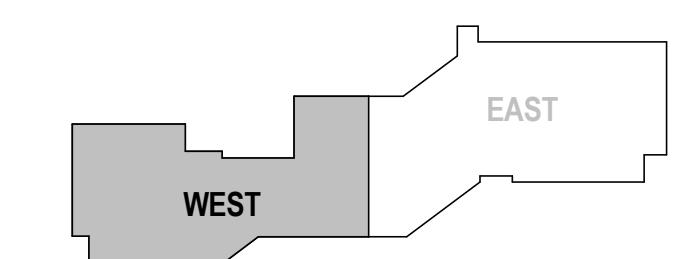
- NON - RATED PARTITION
- PAINTED GYP BD CEILING
- APC1
- N.I.C.

Seal / Signature

Project Name  
**Unum Workplace Transformation- Phase 1 (H02)**

Project Number  
**59.6481.003**

**KEY PLAN**



Description  
**REFLECTED CEILING PLAN - LEVEL 02 - WEST - H02**

Scale  
**1/8" = 1'-0"**

**A02.202W**

9/1/2017 5:45:32 PM I:\gensler\ad\projects\Revit\Level\A02\A02.003 - UNUM - PORTLAND - H02\_2016\_25168.rvt