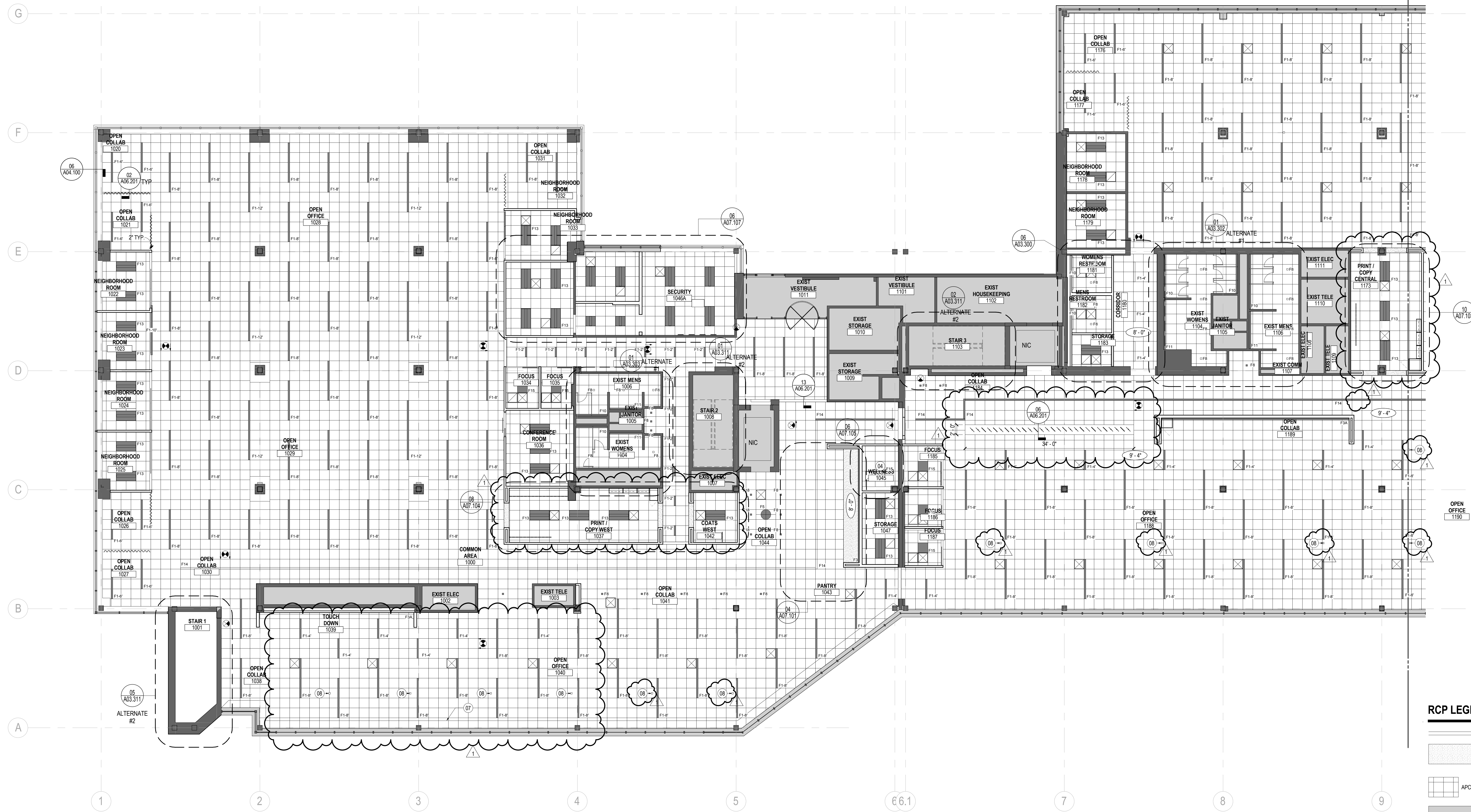
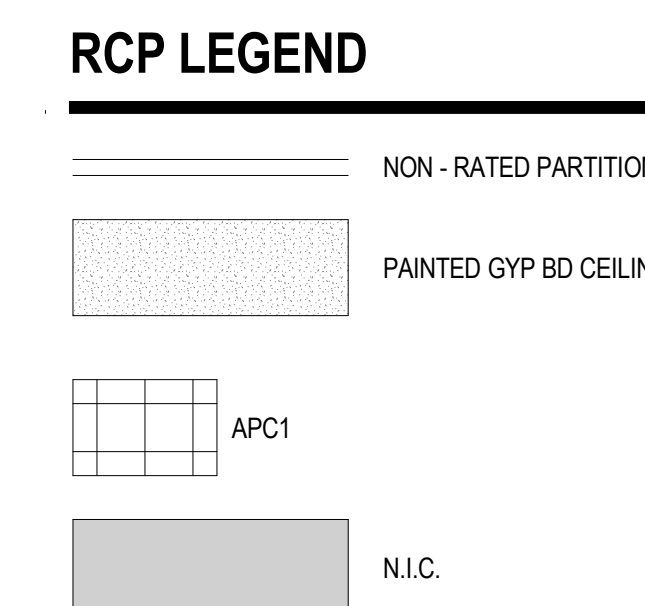


WEST  
EAST



Date	Description
08/18/17	ISSUE FOR PERMIT & CONSTRUCTION
08/25/17	ADDENDUM #1

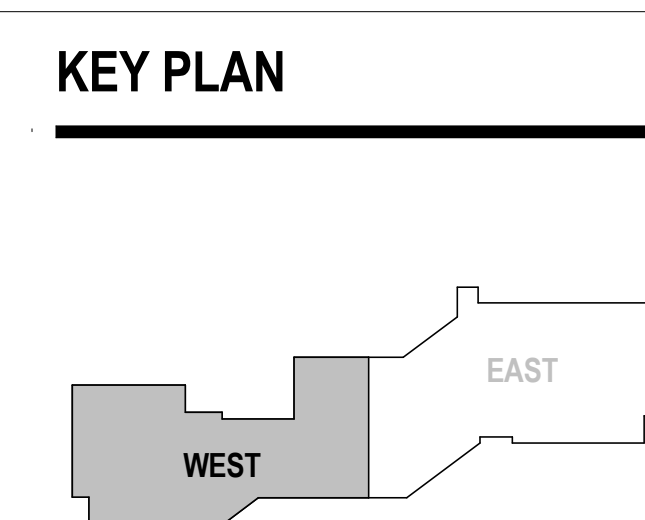


Seal / Signature

Project Name  
**Unum Workplace Transformation - Phase 1 (H02)**

Project Number  
**59.6481.003**

Description  
REFLECTED CEILING PLAN - LEVEL 01 - WEST - H02



Scale  
1/8" = 1'-0"

**A02.201W**

**01 REFLECTED CEILING PLAN - LEVEL 01 - WEST**

SCALE: 1/8" = 1'-0"

**GENERAL NOTES**

- A. ALL CEILINGS TO BE 9'-4", U.N.O.
- B. REFER TO SERIES G00 FOR GRAPHIC SYMBOLS, ABBREVIATIONS, GENERAL NOTES AND TYPICAL MOUNTING DIAGRAMS FOR SWITCHES AND DIMMERS.
- C. DO NOT SCALE DRAWINGS. WRITTEN DIMENSIONS GOVERN. IN CASE OF CONFLICT, NOTIFY ARCHITECT. ARCHITECT'S REFLECTED CEILING PLAN SUPERSEDES ALL OTHERS.
- D. DRAWINGS TO BE READ IN CONJUNCTION WITH LIGHTING FIXTURES SCHEDULE AND SPECIFICATIONS BY ELECTRICAL ENGINEER. IN CASE OF CONFLICT, NOTIFY ARCHITECT PRIOR TO PROCEEDINGS.
- E. REFER TO ENGINEER'S DRAWINGS FOR LIGHTING, DIFFUSERS, SPRINKLERS, FIRE ALARM DEVICES AND OTHER ITEMS IN THE CEILING.
- F. VERIFY LOCATION AND SIZE OF ALL ACCESS PANELS IN GYPSUM CEILINGS WITH ARCHITECT.
- G. ALL LIGHTS, SPRINKLER HEADS, SPEAKERS, EXIT SIGNS, AND OTHER CEILING-MOUNTED DEVICES IN APC TO BE CENTERED IN TILE IN BOTH DIRECTIONS, U.N.O.
- H. PROVIDE SHADOW MOULD AT ALL PERIMETER CONDITIONS OF APC, U.N.O.
- J. ALL GYPSUM BOARD CEILINGS AND SOFFITS TO BE FABRICATED WITH 5/8" SAG-RESISTANT GYPSUM BOARD.
- K. ALL GYPSUM BOARD CEILINGS AND SOFFITS TO BE PAINTED P7, U.N.O.
- L. SUSPENDED CEILING GRID SYSTEM AND ACOUSTIC PANEL TO BE C1, U.N.O.
- M. CENTER CEILING GRID AND TILE IN ROOMS AS SHOWN, U.N.O.
- N. BOTTOM OF ALL SUSPENDED LIGHT FIXTURES TO BE AT 9'-4"
- P. REFER TO ELECTRICAL DRAWINGS FOR LIGHT FIXTURE SCHEDULE
- Q. INSTALL NEW ROLLER SHADES AT ALL EXTERIOR WINDOWS. REFER TO DETAIL 09/A06.201 FOR ADDITIONAL INFORMATION.

**SHEET NOTES**

- 04 PROVIDE DIMMER SWITCH FOR LIGHTING IN THIS ROOM.
- 07 PAINT REPAIR AND PROTECT FINISHES TO BE REUSED.
- 08 EXISTING POWER POLE TO BE REUSED, REFER TO FURNITURE PLAN.

9/25/2017 3:56:49 PM I:\gensler\ad\projects\Revit\Level\A02\A02.201W - PORTLAND - H02 - UNUM - PORTLAND - H02\_2016\_MichaelThomasGensler.rvt