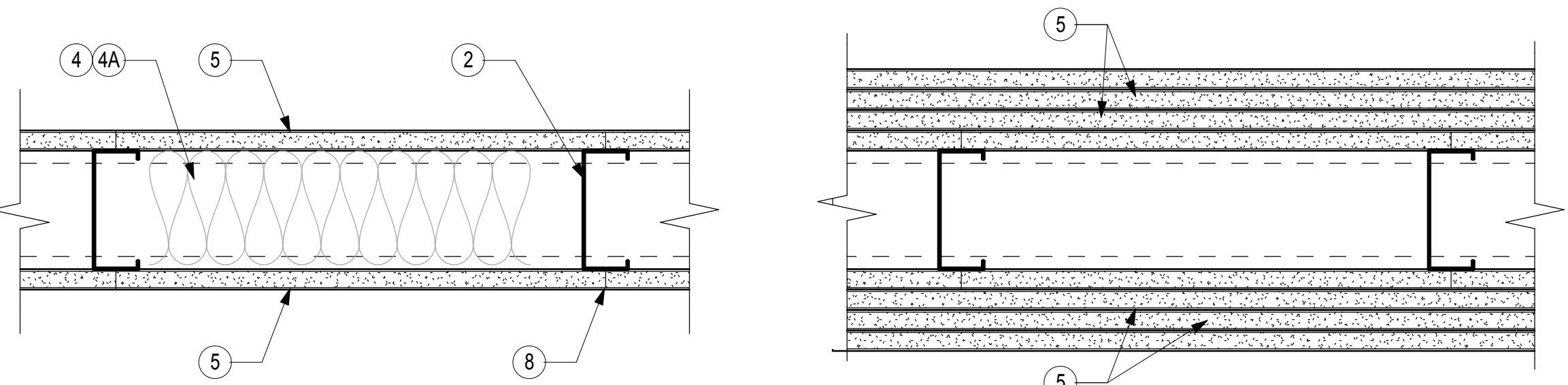


DESIGN No. U419
NONBEARING WALL RATINGS - 1, 2, 3 OR 4 HR. (SEE ITEMS 4 & 5)



1. Floor and Ceiling Runners — (Not shown) — For use with Item 2 - Channel shaped, fabricated from min 25 MSG corrosion-protected steel, min depth to accommodate stud size, with min 1-1/4 in. long legs, attached to floor and ceiling with fasteners 24 in. OC max.
- 1A. Framing Members* - Floor and Ceiling Runners — (Not shown - In lieu of Item 1 — For use with Item 2A, proprietary channel shaped, min. 3-5/8 in. deep, fabricated from min. 0.015 in. (min bare metal thickness) galvanized steel, attached to floor and ceiling with fasteners 24 in. OC max. Effective thickness is 0.034 in. CLARKDIETRICH BUILDING SYSTEMS — UltraSTEEL®.
- 1B. Framing Members* - Floor and Ceiling Runners — (Not shown - In lieu of Item 1) — For use with Item 2A, proprietary channel shaped, min. 2-1/2 in. deep, fabricated from min. 0.015 in. (min bare metal thickness) galvanized steel, attached to floor and ceiling with fasteners 24 in. OC max. Effective thickness is 0.034 in. CLARKDIETRICH BUILDING SYSTEMS — UltraSTEEL®.
- 1C. Framing Members* - Floor and Ceiling Runners — (Not shown - In lieu of Item 1 — For use with Item 2C, proprietary channel shaped runners, 3-5/8 in. deep attached to floor and ceiling with fasteners 24 in. OC max. CALIFORNIA EXPANDED METAL PRODUCTS CO — ViperTrack™
- CRACO MFG INC — SmartTrack™
 MARINOWARE, DIV OF WARE INDUSTRIES INC — Viper25™ Track
 TELLING INDUSTRIES L L C — Viper25™ Track
- 1D. Framing Members* - Floor and Ceiling Runners — (Not shown - In lieu of Item 1 — For use with Item 2D, proprietary channel shaped runners, 1-1/4 in. wide by 3-5/8 in. deep fabricated from min 0.020 in. thick galv steel, attached to floor and ceiling with fasteners spaced 24 in. OC max. MARINOWARE, DIV OF WARE INDUSTRIES
- INC — Viper20™ Track
 TELLING INDUSTRIES L L C — Viper20™ Track
- 1E. Framing Members*—Floor and Ceiling Runners — (Not shown) — In lieu of Item 1 - Channel shaped, attached to floor and ceiling with fasteners 24 in. OC max. ALLSTEEL & GYPSUM PRODUCTS INC — Type SUPREME Framing System
- CONSOLIDATED FABRICATORS CORP.
 BUILDING PRODUCTS DIV — Type SUPREME Framing System
 QUAL RUN BUILDING MATERIALS INC — Type SUPREME Framing System
 SCAFOF STEEL STUD MANUFACTURING CO — Type SUPREME Framing System
 STEEL CONSTRUCTION SYSTEMS INC — Type SUPREME Framing System
 UNITED METAL PRODUCTS INC — Type SUPREME Framing System
- 1F. Floor and Ceiling Runners — (Not shown)—For use with Item 2B-Channel shaped, fabricated from min 20 MSG corrosion-protected or galv steel, min depth to accommodate stud size, with min 1 in. long legs, attached to floor and ceiling with fasteners spaced max 24 in. OC.
- 1G. Framing Members*—Floor and Ceiling Runners —(Not shown, As an alternate to Item 1) — For use with Items 2F, 5F or 5G or 5I only, channel shaped, fabricated from min. 0.015 in. (min bare metal thickness) galvanized steel, attached to floor and ceiling with fasteners 24 in. OC max.
- CLARKDIETRICH BUILDING SYSTEMS — CD ProTRAK
 DMFCWBS L L C — ProTRAK
 MBA BUILDING SUPPLIES — ProTRAK
 SOUTHEASTERN STUD & COMPONENTS INC — ProTRAK
 TELLING INDUSTRIES L L C — TRUE-TRACK™
- 1H. Framing Members* - Floor and Ceiling Runners — (Not shown - In lieu of Item 1 — For use with Item 2G, proprietary channel shaped runners, minimum width to accommodate stud size, with 1- 1/8 in. long legs fabricated from min 0.015 in. (min bare metal thickness) galv steel, attached to floor and ceiling with fasteners spaced 24 in. OC max. SUPER STUD BUILDING PRODUCTS — The Edge
2. Steel Studs — Channel shaped, fabricated from min 25 MSG corrosion-protected steel, min depth as indicated under Item 5, spaced a max of 24 in. OC. Studs to be cut 3/8 to 3/4 in. less than assembly height.
- 2A. Framing Members* - Steel Studs — In lieu of Item 2 - Proprietary channel shaped studs, min. depth as indicated under Item 5, fabricated from min. 0.015 in. (min bare metal thickness) galvanized steel, spaced a max of 24 in. OC. Studs to be cut 3/4 in. less than assembly height. Allowable use of studs is shown in the table below. For direct attachment of gypsum board only. Effective thickness is 0.034 in. CLARKDIETRICH BUILDING SYSTEMS — UltraSTEEL®.
- 2B. Steel Studs — (As an alternate to Item 2, For use with Items 5B & 5E) Channel shaped, fabricated from min 20 MSG corrosion-protected or galv steel, 3-1/2 in. min depth, spaced a max of 16 in. OC. Studs friction-fit into floor and ceiling runners. Studs to be cut 5/8 to 3/4 in. less than assembly height.
- 2C. Framing Members* - Steel Studs — (As an alternate to Item 2, For use with Items SC or 5I) - Proprietary channel shaped studs, 3-5/8 in. deep spaced a max of 24 in. OC. Studs to be cut 3/4 in. less than the assembly height and installed with a 1/8 in. gap between the end of the stud and track at the bottom of the wall. For direct attachment of gypsum board only.
- CALIFORNIA EXPANDED METAL PRODUCTS CO — ViperStud™
 CRACO MFG INC — SmartStud™
 MARINOWARE, DIV OF WARE INDUSTRIES INC — Viper25™
 TELLING INDUSTRIES L L C — Viper25™
- 2D. Framing Members* - Metal Studs — (Not shown - In lieu of Item 2 — For use with Item 1D, proprietary channel shaped steel studs, min depth as indicated under Item 5, spaced a max if 24 in. OC, fabricated from min 0.020 in. thick galv steel. Studs cut 3/8 to 3/4 in. less in lengths than assembly heights.
- MARINOWARE, DIV OF WARE INDUSTRIES INC — Viper20™
 TELLING INDUSTRIES L L C — Viper20™
- 2E. Framing Members* — Steel Studs — In lieu of Item 2 - For use with Item 1E- Channel shaped studs, min depth as indicated under Item 5, spaced a max of 24 in. OC. Studs to be cut 3/4 in. less than assembly height.
- ALLSTEEL & GYPSUM PRODUCTS INC — Type SUPREME Framing System
 CONSOLIDATED FABRICATORS CORP.
 BUILDING PRODUCTS DIV — Type SUPREME Framing System
 QUAL RUN BUILDING MATERIALS INC — Type SUPREME Framing System
 SCAFOF STEEL STUD MANUFACTURING CO — Type SUPREME Framing System
 STEEL CONSTRUCTION SYSTEMS INC — Type SUPREME Framing System
 UNITED METAL PRODUCTS INC — Type SUPREME Framing System
- 2F. Framing Members* — Steel Studs — (Not shown, As an alternate to Item 2) — For use with Items 1D, 5F or 5G or 5I only, channel shaped studs, min depth as indicated under Item 5F, 5G or 5I, fabricated from min. 0.015 in. (min bare metal thickness) galvanized steel, spaced a max of 24 in. OC. Studs to be cut 3/4 in. less than assembly height.
- CLARKDIETRICH BUILDING SYSTEMS — CD ProSTUD
 DMFCWBS L L C — ProSTUD
 MBA BUILDING SUPPLIES — ProSTUD
 SOUTHEASTERN STUD & COMPONENTS INC — ProSTUD
 TELLING INDUSTRIES L L C — TRUE-STUD™
- 2G. Framing Members* - Metal Studs — (Not shown - In lieu of Item 2 — For use with Item 1H, proprietary channel shaped steel studs, minimum width indicated under Item 5, 1-1/4 in. deep fabricated from min 0.015 in. (min bare metal thickness) galvanized steel. Studs 3/8 in. to 3/4 in. less in lengths than assembly heights.
- SUPER STUD BUILDING PRODUCTS — The Edge
3. Wood Structural Panel Sheathing — (Optional, For use with Item 5 Only) - (Not Shown) - 4 ft wide, 7/16 in. thick oriented strand board (OSB) or 15/32 in. thick structural 1 sheathing (plywood) complying with DOC PS1 or PS2, or APA Standard PRP-108, manufactured with exterior glue, applied horizontally or vertically to the steel studs. Vertical joints centered on studs, and staggered one stud space from wallboard joints. Attached to studs with flat-head self-drilling tapping screws with a min. head diam. of 0.292 in. at maximum 6 in. OC, in the perimeter and 12 in. OC in the field. When used, fastener lengths for gypsum panels increased by min. 1/2 in.
4. Batts and Blankets* — (Required as indicated under Item 5) — Mineral wool bats, friction fitted between studs and runners. Min nom thickness as indicated under Item 5. See Batts and Blankets (BKNV or BZJ2) Categories for names of Classified companies.
- 4A. Batts and Blankets* — (Optional) — In lieu of Item 5 stud cavities, any glass fiber or mineral wool insulation bearing the UL Classification Marking as to Surface Burning Characteristics and/or Fire Resistance. See Batts and Blankets (BKNV or BZJ2) Categories for names of Classified companies.
5. Gypsum Board* — Gypsum panels with beveled, square or tapered edges, applied vertically or horizontally. Vertical joints centered over studs and staggered one stud cavity on opposite sides of studs. Vertical joints in adjacent layers (multilayer systems) staggered one stud cavity. Horizontal joints need not be backed by steel framing. Horizontal edge joints and horizontal butt joints on opposite sides of studs need not be staggered. Horizontal edge joints and horizontal butt joints in adjacent layers (multilayer systems) staggered a min of 12 in. The thickness and number of layers for the 1 hr, 2 hr, 3 hr and 4 hr ratings are as follows:
- | Rating, Hr | Min Stud Depth, in. Items 2, 2D, 2E, 2G and 2F | Min Stud Depth, in. Item 2A | No. of Layers & Thickness of Panel | Min Thkns of Insulation (Item 4) |
|------------|--|-----------------------------|------------------------------------|----------------------------------|
| 1 | 3-1/2 | 3-5/8 | 1 layer, 5/8 in. thick | Optional |
| 1 | 2-1/2 | 3-5/8 | 1 layer, 1/2 in. thick | 1-1/2 in. |
| 1 | 1-5/8 | 3-5/8 | 1 layer, 3/4 in. thick | Optional |
| 2 | 1-5/8 | 2-1/2 | 2 layers, 1/2 in. thick | Optional |
| 2 | 1-5/8 | 2-1/2 | 2 layers, 5/8 in. thick | Optional |
| 2 | 3-1/2 | 3-5/8 | 1 layer, 3/4 in. thick | 3 in. |
| 3 | 1-5/8 | 2-1/2 | 3 layers, 1/2 in. thick | Optional |
| 3 | 1-5/8 | 2-1/2 | 2 layers, 3/4 in. thick | Optional |
| 3 | 1-5/8 | 2-1/2 | 3 layers, 5/8 in. thick | Optional |
| 4 | 1-5/8 | 2-1/2 | 4 layers, 5/8 in. thick | Optional |
| 4 | 1-5/8 | 2-1/2 | 4 layers, 1/2 in. thick | Optional |
| 4 | 2-1/2 | 2-1/2 | 2 layers, 3/4 in. thick | 2 in. |

Gypsum Board Protection on Each Side of Wall

Rating, Hr	Min Stud Depth, in. Item 2F	No. of Layers & Thickness of Panel	Min Thkns of Insulation (Item 4)
2	1-5/8	2 layers, 1/2 in. thick	Optional
2	1-5/8	2 layers, 5/8 in. thick	Optional
3	1-5/8	3 layers, 1/2 in. thick	Optional
3	1-5/8	3 layers, 5/8 in. thick	Optional
4	1-5/8	4 layers, 5/8 in. thick	Optional
4	1-5/8	4 layers, 1/2 in. thick	Optional

- CGC INC — 1/2 in. thick Type C, IP-X2 or IPC-AR; 5/8 in. thick Type AR, C, IP-AR, IP-X1, IP-X2, IPC-AR, SCX, SHX, WRX or WR; or 3/4 in. thick Types IP-X3 or ULTRACODE
- UNITED STATES GYPSUM CO — 1/2 in. thick Type C, IP-X2, IPC-AR or WRC; 5/8 in. thick Type SCX, SHX, WRX, IP-X1, AR, C, WRC, FRX-G, IP-AR, IP-X2, IPC-AR; 3/4 in. thick Types IP-X3 or ULTRACODE
- USG MEXICO S A DE C V — 1/2 in. thick Type C, IP-X2, IPC-AR or WRC; 5/8 in. thick Type AR, C, IP-AR, IP-X1, IP-X2, IPC-AR, SCX, SHX, WRX, WRC or; 3/4 in. thick Types IP-X3 or ULTRACODE
- When Item 7B, Steel Framing Members* is used, Nonbearing Wall Rating is limited to 1 Hr. Min. stud depth is 3-1/2 in., min. thickness of insulation (Item 4) is 3 in., and two layers of gypsum board panels (1/2 in. or 5/8 in. thick) shall be attached to furring channels as described in Item 6. One layer of gypsum board panels (1/2 in. or 5/8 in. thick) attached to opposite side of stud without furring channels as described in Item 6.
- 5A. Gypsum Board* — (As an alternate to Item 5) — 5/8 in. thick, 24 to 54 in. wide, applied horizontally as the outer layer to one side of the assembly. Secured as described in Item 6.
 CGC INC — Type SHX.
 UNITED STATES GYPSUM CO — Type FRX-G, SHX.
 USG MEXICO S A DE C V — Type SHX.
- 5B. Gypsum Board* — (Not Shown) — As an alternate to Item 5 when used as the base layer on one or both sides of wall when 5/8 in or 1/2 in. thick products are specified. For direct attachment only to steel studs Item 2B, (not to be used with Item 3) - Nom 5/8 in. or 1/2 in. may be used as alternate to all 5/8 in. or 1/2 in. shown in Item 5. Wallboard Protection on Each Side of Wall table. Nom 5/8 in. or 1/2 in. thick lead backed gypsum panels with beveled, square or tapered edges, applied vertically. Vertical joints centered over studs and staggered min 1 stud cavity on opposite sides of studs. Gypsum board secured to 20 MSG steel studs Item 2B with 1-1/4 in. long Type S-12 steel screws spaced 8 in. OC at perimeter and 12 in. OC in the field. To be used with Lead Batten Strips (see Item 11A) or Lead Discs (see Item 12).
 RAY-S&R ENGINEERING CORP — Type RB-LB®
- 5C. Gypsum Board* — (For Use With Item 2C) Rating Limited to 1 Hour 5/8 in. thick, 48 in. wide. Gypsum panels with beveled, square or tapered edges, applied vertically or horizontally. (Vertical Application) - The gypsum board is to be installed on each side of the studs with 1 in. long Type S coated steel screws spaced 8 in. OC starting 4 in. from the edge of the board at the vertical edges and 12 in. OC starting 6 in. from the edge of the board at the center of each board. Gypsum boards are to be secured to the top and bottom track with screws spaced 8 in. OC starting 4 in. from the board edge. Fasteners shall not penetrate through both the stud and the track at the same time. All horizontal joints are to be backed as outlined under section VI of Volume 1 in the Fire Resistive Directory.
 CGC INC — Type SCX.
- UNITED STATES GYPSUM CO — Type SCX.
 USG MEXICO S A DE C V — Type SCX.
- 5D. Gypsum Board* — (As an alternate to Item 5) — 5/8 in. thick, 48 in. wide, applied vertically or horizontally. Secured as described in Item 6. For use with Items 1 and 2 only.
 UNITED STATES GYPSUM CO — Type USX®.
- 5E. Gypsum Board* — (Not Shown) - (As an alternate to Item 5 when used as the base layer on one or both sides of wall when 1/2 in. or 5/8 in. thick products are specified. For direct attachment only to steel studs Item 2B, not to be used with Item 3). Nominal 5/8 in. thick lead backed gypsum panels with beveled, square or tapered edges, applied vertically. Vertical joints centered over studs and staggered min 1 stud cavity on opposite sides of studs. Wallboard secured to studs with 1-1/4 in. long Type S-12 (or No. 6 by 1-1/4 in. long bugle head fire drill) steel screws spaced 8 in. OC at perimeter and 12 in. OC in the field.
 NEW ENGLAND LEAD BURNING CO INC, DBA
 NELCO — Nelco
- 5F. Gypsum Board* — (As an alternate to Item 5) — For use with Items 1G and 2F and limited to 1 Hour Rating only. Gypsum panels with beveled, square or tapered edges, applied vertically, and fastened to the steel studs with 1 in. long Type S screws spaced 8 in. OC along vertical and bottom edges and 12 in. OC in the field. Vertical joints centered over studs and staggered one stud cavity on opposite sides of studs. Steel stud depth shall be a minimum 3-5/8 in.
 UNITED STATES GYPSUM CO — 5/8 in. thick Type SCX.
- 5G. Gypsum Board* — (As an alternate to Item 5) — For use with Items 1G and 2F only. Gypsum panels with beveled, square or tapered edges, applied vertically or horizontally, as specified in the table below and fastened to the steel studs as described in Item 6. Vertical joints centered over studs and staggered one stud cavity on opposite sides of studs. Vertical joints in adjacent layers (multilayer systems) staggered one stud cavity. Horizontal joints need not be backed by steel framing. Horizontal edge joints and horizontal butt joints on opposite sides of studs need not be staggered. Horizontal edge joints and horizontal butt joints in adjacent layers (multilayer systems) staggered a min of 12 in. The thickness and number of layers for the 2 hr, 3 hr and 4 hr ratings are as follows:
- 5H. Gypsum Board* — (Not Shown) - (As an alternate to Item 5 when used as the base layer on one or both sides of wall when 5/8 or 3/4 in. thick products are specified. For direct attachment only to steel studs Item 2B, (not to be used with Item 3) - Nom 5/8 or 3/4 in. may be used as alternate to all 5/8 or 3/4 in. shown in Item 5. Wallboard Protection on Each Side of Wall table. Nom 5/8 or 3/4 in. thick lead backed gypsum panels with beveled, square or tapered edges, applied vertically. Vertical joints centered over studs and staggered min 1 stud cavity on opposite sides of studs. Gypsum board secured to 20 MSG steel studs Item 2B with 1-1/4 in. long Type S-12 steel screws spaced 8 in. OC at perimeter and 12 in. OC in the field. To be used with Lead Batten Strips (see Item 11A) or Lead Discs (see Item 12A).
 MAYCO INDUSTRIES INC — Type X-Ray Shielded Gypsum
- 5I. Gypsum Board* — (As an alternate to Item 5) - Nom. 5/8 in. thick gypsum panels with beveled, square or tapered edges installed as described in Item 5. Steel stud minimum depth shall be as indicated in Item 5.
 CGC INC — Type ULX.
 UNITED STATES GYPSUM CO — Type ULX
 USG MEXICO S A DE C V — Type ULX
6. Fasteners — (Not shown) — For use with Items 2 and 2F - Type S or S-12 steel screws used to attach panels to studs (Item 2) or furring channels (Item 7). Single layer systems: 1 in. long for 1/2 and 5/8 in. thick panels or 1-1/4 in. long for 3/4 in. thick panels, spaced 8 in. OC when panels are applied horizontally, or 8 in. OC along vertical and bottom edges and 12 in. OC in the field when panels are applied vertically. Two layer systems: First layer: 1 in. long for 1/2 and 5/8 in. thick panels, spaced 8 in. OC. Second layer: 1-5/8 in. long for 1/2 in. 5/8 in. thick panels or 2-1/4 in. long for 3/4 in. thick panels, spaced 16 in. OC with screws offset 8 in. from first layer. Two layer systems applied horizontally: First layer: 1 in. long for 1/2 and 5/8 in. thick panels or 1-1/4 in. long for 3/4 in. thick panels, spaced 16 in. OC starting 8 in. from each edge of the board with an additional screw placed 1-1/4 in. from each edge of the board. Second layer: 1-5/8 in. long for 1/2 in., 5/8 in. thick panels or 2-1/4 in. long for 3/4 in. thick panels, spaced 16 in. OC starting 8 in. from each edge of the board with an additional screw placed 1-1/4 in. from each edge of the board with screws offset 6 in. from first layer. Three-layer systems: First layer: 1 in. long for 1/2 in., 5/8 in. thick panels, spaced 24 in. OC. Second layer: 1-5/8 in. long for 1/2 in., 5/8 in. thick panels, spaced 24 in. OC. Third layer: 2-1/4 in. long for 1/2 in., 5/8 in. thick panels or 2-5/8 in. long for 5/8 in. thick panels, spaced 12 in. OC. Screws offset 6 in. from layer below. For all layers, an additional screw shall be placed 1-1/4 in. from each edge of the board. Four-layer systems: First layer: 1 in. long for 1/2 in., 5/8 in. thick panels, spaced 24 in. OC. Second layer: 1-5/8 in. long for 1/2 in., 5/8 in. thick panels, spaced 24 in. OC. Third layer: 2-1/4 in. long for 1/2 in., 5/8 in. thick panels, spaced 24 in. OC. Fourth layer: 2-5/8 in. long for 5/8 in. thick panels, spaced 12 in. OC. Screws offset min 6 in. from layer below. For all layers, an additional screw shall be placed 1-1/4 in. from each edge of the board.
7. Furring Channels — (Optional, not shown, for single or double layer systems) — Resilient furring channels fabricated from min 25 MSG corrosion protected steel, spaced vertically a max of 24 in. OC. Flange portion attached to each intersecting stud with 1/2 in. long Type S-12 steel screws. Not for use with Item 5A and 5E.
- 7A. Framing Members* — (Not Shown) — (Optional on one or both sides, not shown, for single or double layer systems) — As an alternate to Item 7, furring channels and Steel Framing Members as described below:
 a. Furring Channels — Formed of No. 25 MSG galv steel, 2-3/8 in. wide by 7/8 in. deep, spaced max. 24 in. OC perpendicular to studs. Channels secured to studs as described in Item 6. Gypsum board attached to furring channels as described in Item 6. Not for use with Item 5A and 5E.
 b. Steel Framing Members* — Used to attach furring channels (Item 7Aa) to studs (Item 2). Clips spaced max. 48 in. OC. R3C-1 clips secured to studs with No. 8 x 1-1/2 in. minimum self-drilling, S-12 steel screw through the center grommet. R3C-1V clips secured to studs with No. 8 x 5/16 in. minimum self-drilling, S-12 steel screw through the center hole. Furring channels are friction fitted into clips.
 P4C INTERNATIONAL, INC. — Types R3C-1, R3C-1V.
 KINETICS NOISE CONTROL, INC. — Type Isomax
- 7B. Framing Members* — (Optional, Not Shown) — As an alternate to Item 7, for single or double layer systems, furring channels and Steel Framing Members on only one side of studs as described below:
 a. Furring Channels — Formed of No. 25 MSG galv steel, spaced in. OC perpendicular to studs. Channels secured to studs as described in Item 6. Batts and Blankets placed in stud cavity as described in Item 5. Two layers of gypsum board attached to furring channels as described in Item 5. Not for use with Item 5A and 5E.
 b. Steel Framing Members* — Used to attach furring channels (Item 7Ba) to one side of studs (Item 2) only. Clips spaced 48 in. OC, and secured to studs with two No. 8 x 2-1/2 in. coarse drywall screws, one through the hole at each end of the clip. Furring channels are friction fitted into clips.
- 7C. Framing Members* — Optional - Not Shown - Used as an alternate method to attach resilient channels (Item 7). Clips attached at each intersection of the resilient channel and the steel studs (Item 2). Resilient channels are friction fitted into clips, and then clips are secured to the steel stud with min. 1 in. long Type S-12 steel screws through the center hole of the clip and the resilient channel flange.
 KEENE BUILDING PRODUCTS CO INC — Type RC Assurance
- 7D. Framing Members* — (Not Shown) — (Optional on one or both sides, not shown, for single or double layer systems) — As an alternate to Item 7, furring channels and Steel Framing Members as described below:
 a. Furring Channels — Formed of No. 25 MSG galv steel, 2-3/8 in. wide by 7/8 in. deep, spaced max. 24 in. OC perpendicular to studs. Channels secured to studs as described in Item 6. Gypsum board attached to furring channels as described in Item 6. Not for use with Item 5A and 5E.
 b. Steel Framing Members* — Used to attach furring channels (Item 7Aa) to studs (Item 2). Clips spaced max. 48 in. OC. GENIECLIPS secured to studs with No. 8 x 1-1/2 in. minimum self-drilling, S-12 steel screw through the center grommet. Furring channels are friction fitted into clips.
 PLITEG INC — Type GENIECLIP
8. Joint Tape and Compound — Vinyl or casein, dry or premixed joint compound applied in two coats to joints and screw heads of outer layers. Paper tape, nom 2 in. wide, embedded in first layer of compound over all joints of outer layer panels. Paper tape and joint compound may be omitted when gypsum panels are supplied with a square edge.
9. Siding, Brick or Stucco — (Optional, not shown) — Aluminum, vinyl or steel siding, brick veneer or stucco, meeting the requirements of local code agencies, installed over gypsum panels. Brick veneer attached to studs with corrugated metal wall ties attached to each stud with steel screws, not more than each sixth course of brick.
10. Caulking and Sealants* — (Optional, not shown) — A bead of acoustical sealant applied around the partition perimeter for sound control.
 UNITED STATES GYPSUM CO — Type AS
11. Lead Batten Strips — (Not Shown, For Use With Item 5B) - Lead batten strips, min 1-1/2 in. wide, max 10 ft long with a max thickness of 0.125 in. Strips placed on the interior face of studs and attached from the exterior face of the stud with two 1 in. long Type S-12 pan head steel screws at the top and one at the bottom of the strip. Lead batten strips to have a purity of 99.9% meeting the Federal specification QQ-L-201F, Grade "C". Lead batten strips required behind vertical joints of lead backed gypsum wallboard (Item 5B) and optional at remaining stud locations. Required behind vertical joints.
- 11A. Lead Batten Strips — (Not Shown, For Use With Item 5H) Lead batten strips, 2 in. wide, max 10 ft long with a max thickness of 0.0625 in. Strips placed on the face of studs and attached to the stud with two min. 1 in. long min. Type S-8 pan head steel screws, one at the top of the strip and one at the bottom of the strip or with one min. 1 in. long min. Type S-8 pan head steel screw at the top of the strip. Lead batten strips to have a purity of 99.9% meeting the Federal specification QQ-L-201F, Grade "C". Lead batten strips required behind vertical joints of lead backed gypsum wallboard (Item 6) and optional at remaining stud locations.
12. Lead Discs or Tabs — (Not Shown, For Use With Item 5E) - Used in lieu of or in addition to the lead batten strips (Item 11) or optional at other locations - Max 3/4 in. diam by max 0.125 in. thick lead discs compression fitted or adhered over screw heads or max 1/2 in. by 1-1/4 in. by max 0.125 in. thick lead tabs placed on gypsum boards (Item 5B) underneath screw locations prior to the installation of the screws. Lead discs or tabs to have a purity of 99.9% meeting the Federal specification QQ-L-201F, Grade "C".
- 12A. Lead Discs — (Not Shown, for use with Item 5H) Max 5/16 in. diam by max 0.0625 in. thick lead discs compression fitted or adhered over steel screw heads. Lead discs to have a purity of 99.9% meeting the Federal Specification QQ-L-201F, Grade "C".
13. Lead Batten Strips — (Not Shown, For Use With Item 5E) - Lead batten strips, 2 in. wide, max 10 ft long with a max thickness of 0.142 in. Strips placed on the face of studs and attached to the stud with two min. 1 in. long min. Type S-8 pan head steel screws, one at the top of the strip and one at the bottom of the strip. Lead batten strips to have a purity of 99.9% meeting the Federal specification QQ-L-201F, Grade "C". Lead batten strips required behind vertical joints of lead backed gypsum wallboard (Item 5E) and optional at remaining stud locations.
14. Lead Tabs — (Not Shown, For Use With Item 5E) 2 in. wide, 5 in. long with a max thickness of 0.142 in. Tabs friction-fit around front face of stud, the stud folded back flange, and the back face of the stud. Tabs required at each location where a screw (that secures the gypsum boards, Item 5E) will penetrate the steel stud. Lead tabs to have a purity of 99.9% meeting the Federal specification QQ-L-201F, Grade "C". Lead tabs may be held in place with standard adhesive tape if necessary. *Bearing the UL Classification Mark

