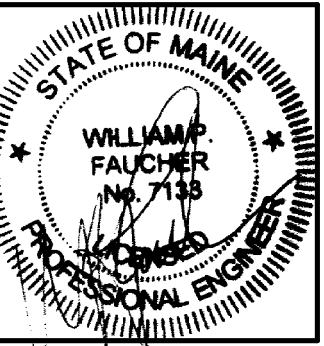


No.	Date	Description
Revision Schedule		



JOB NO:  
14-074

DRWN: CHK:  
PED WPF

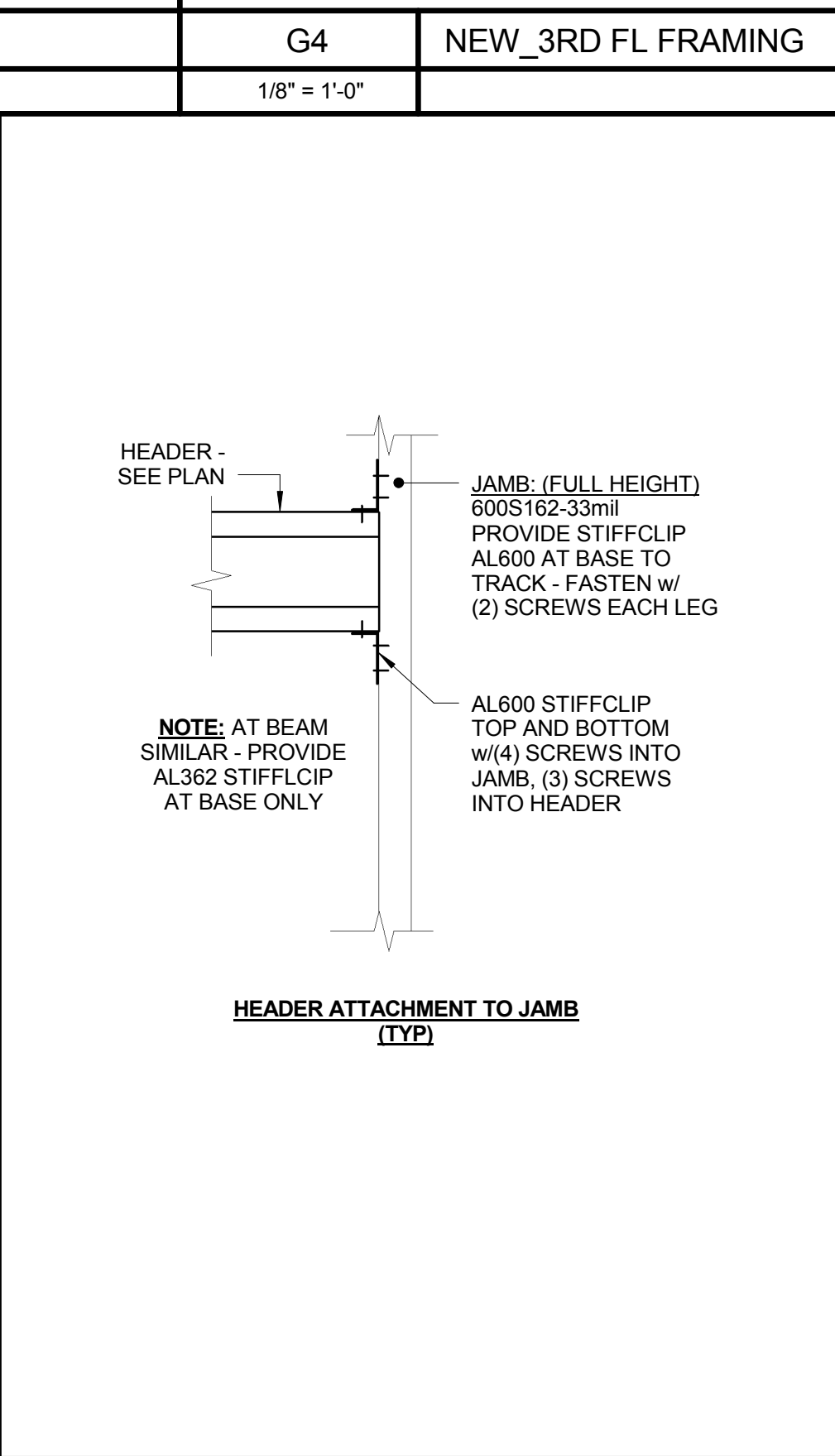
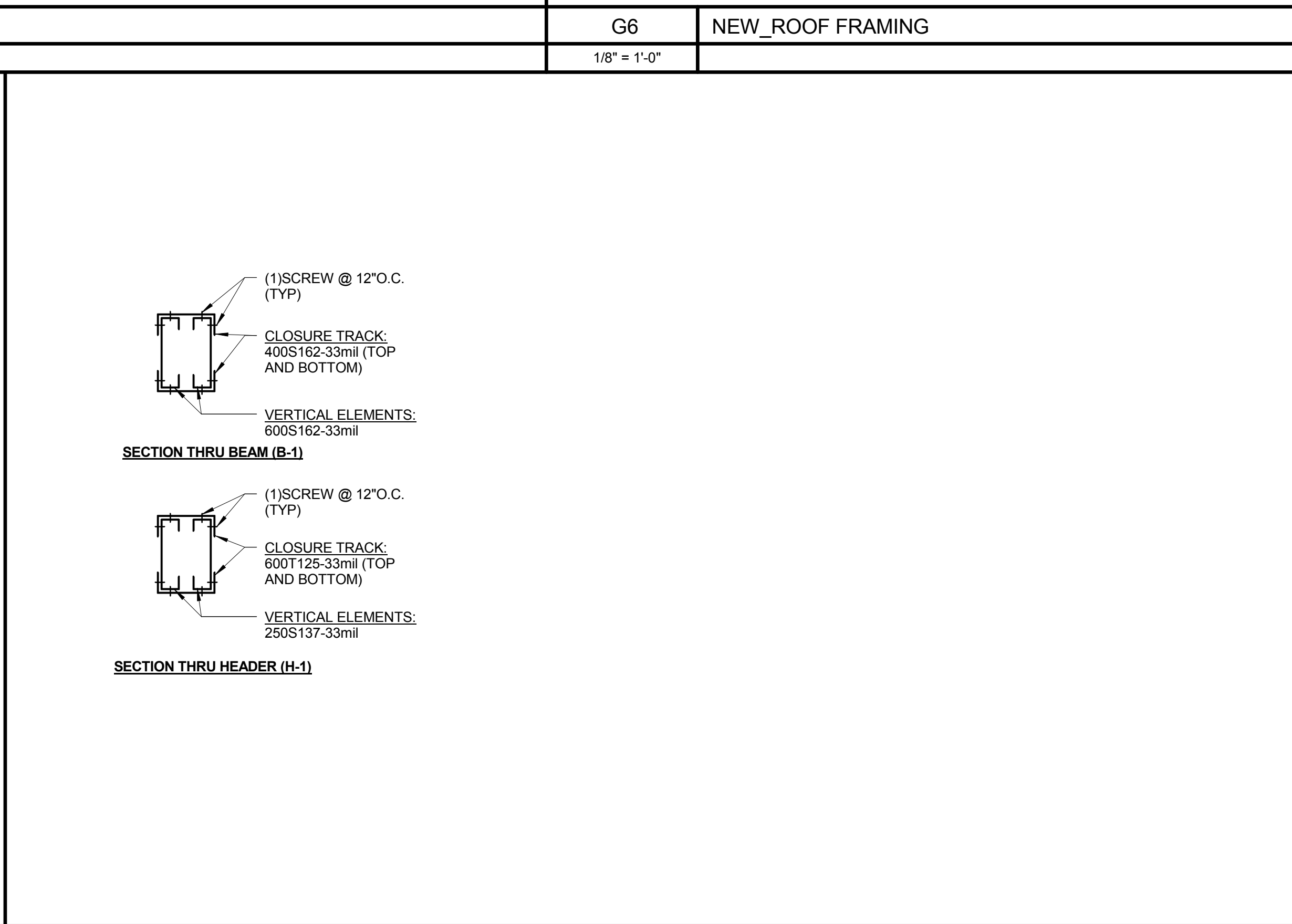
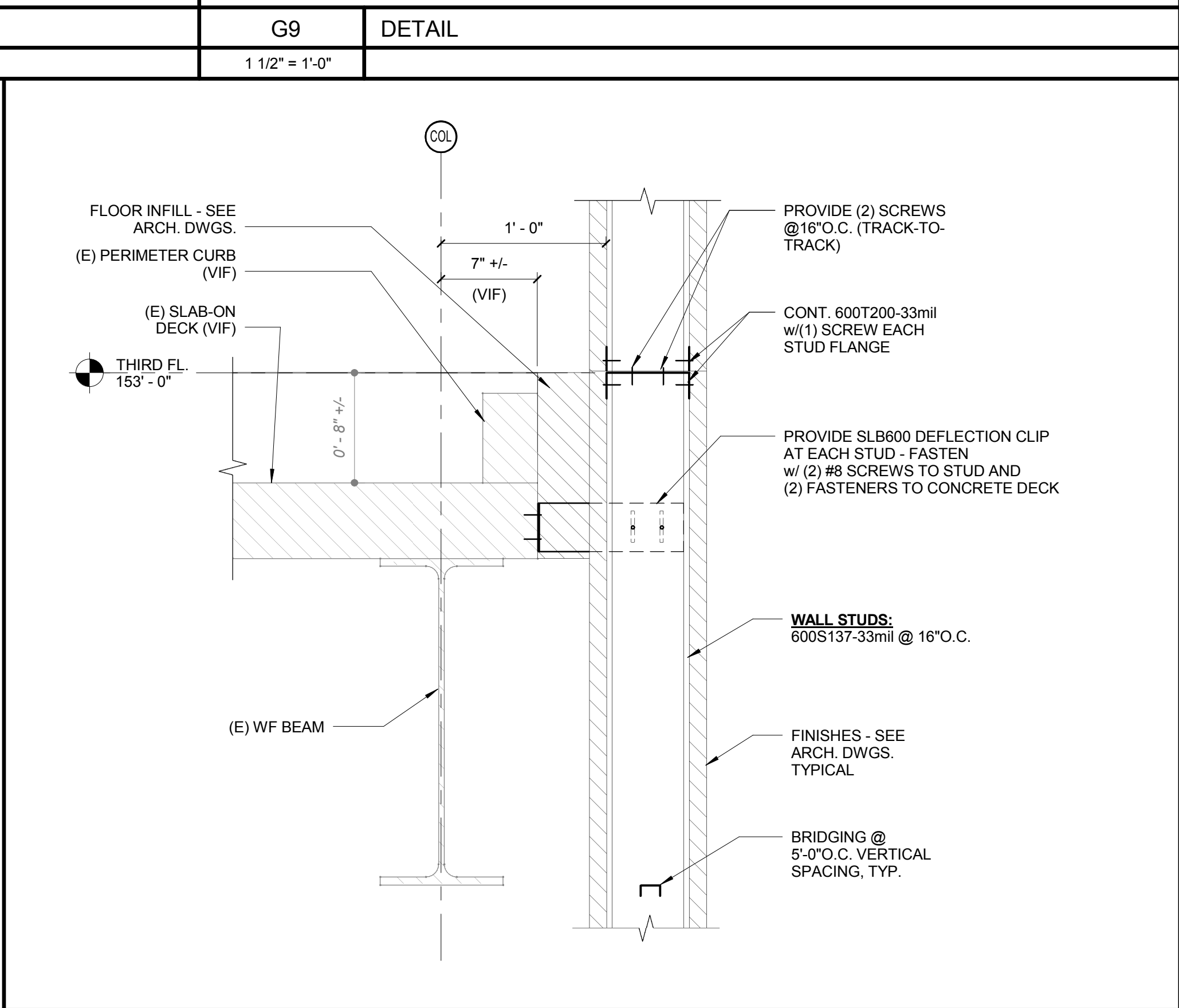
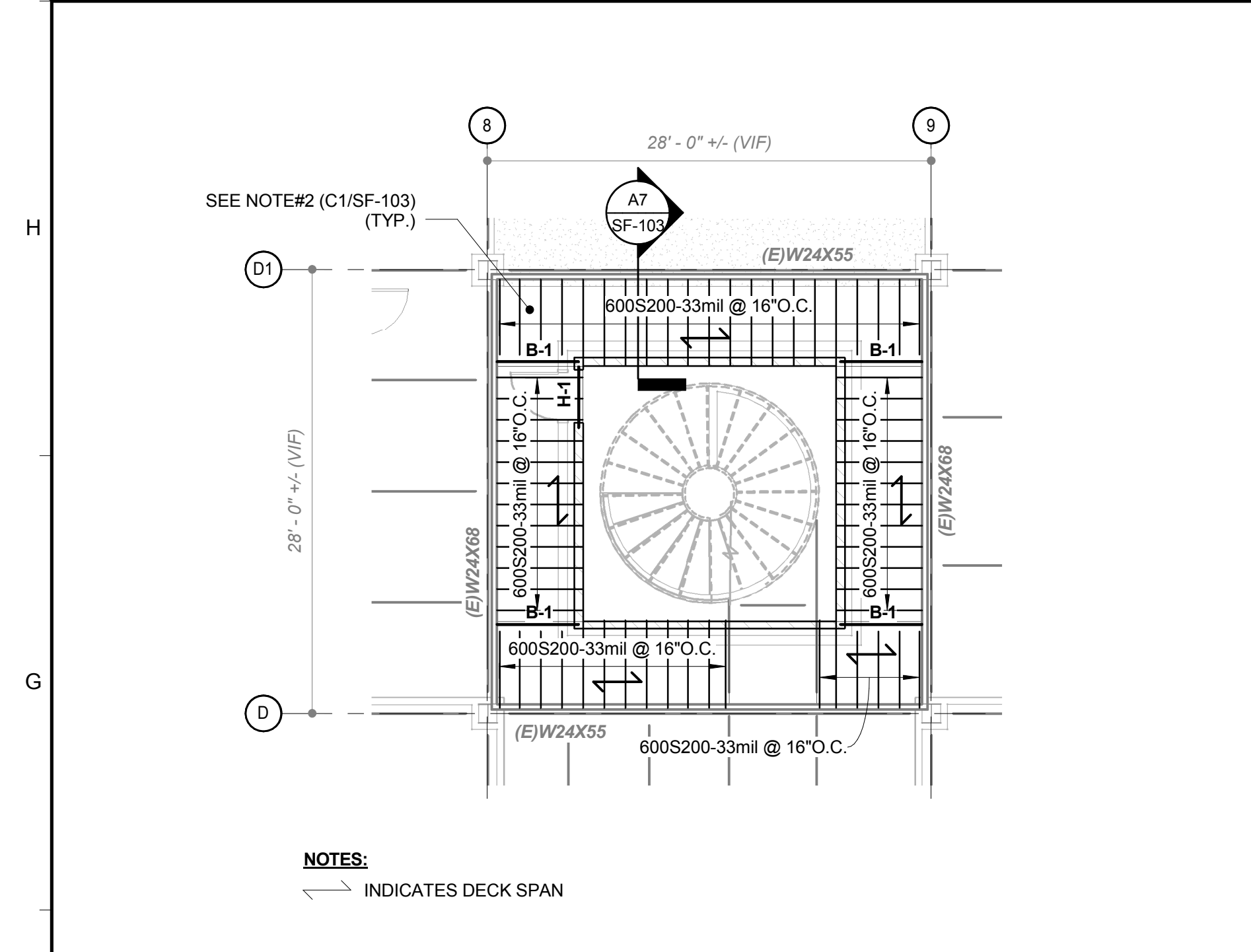
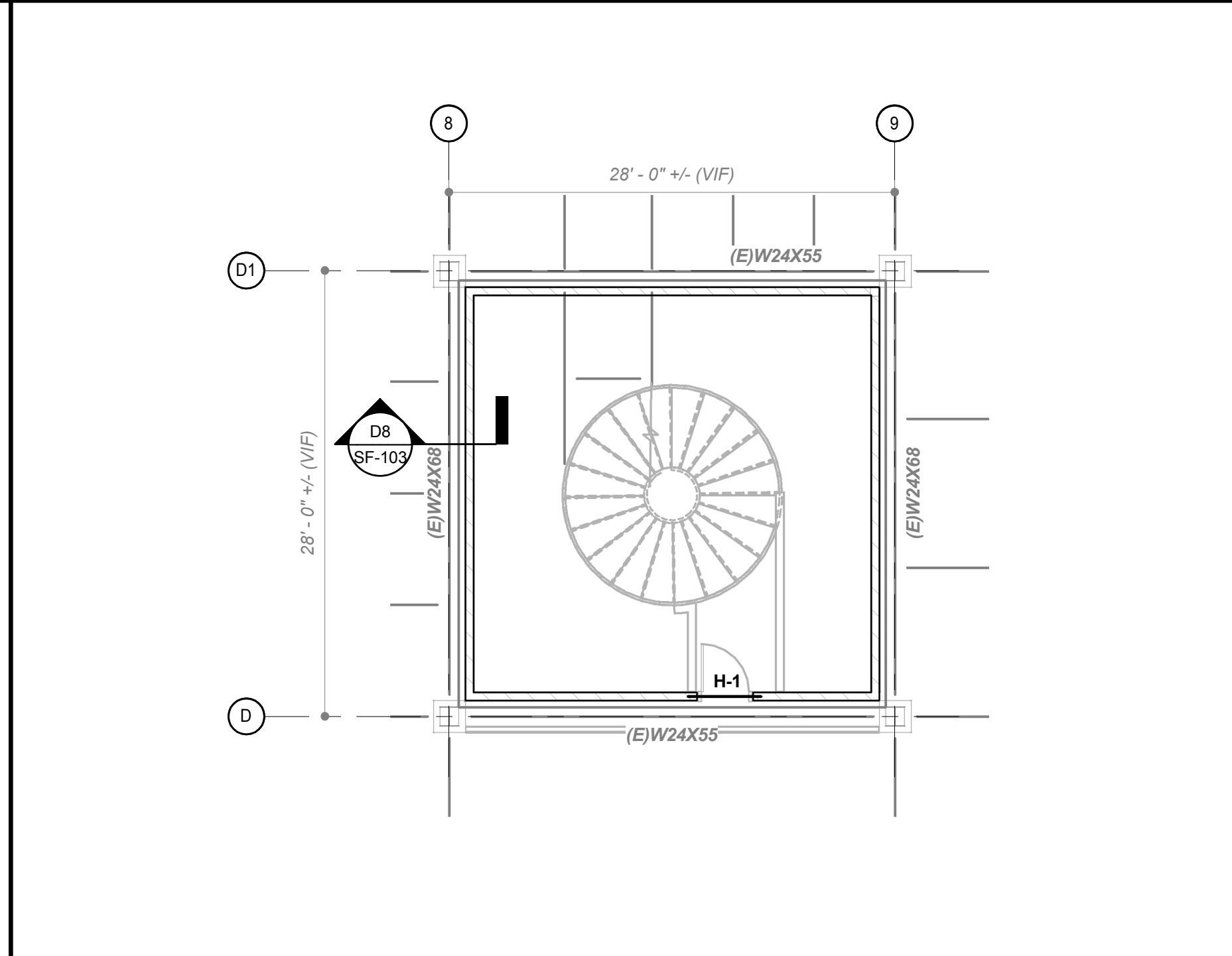
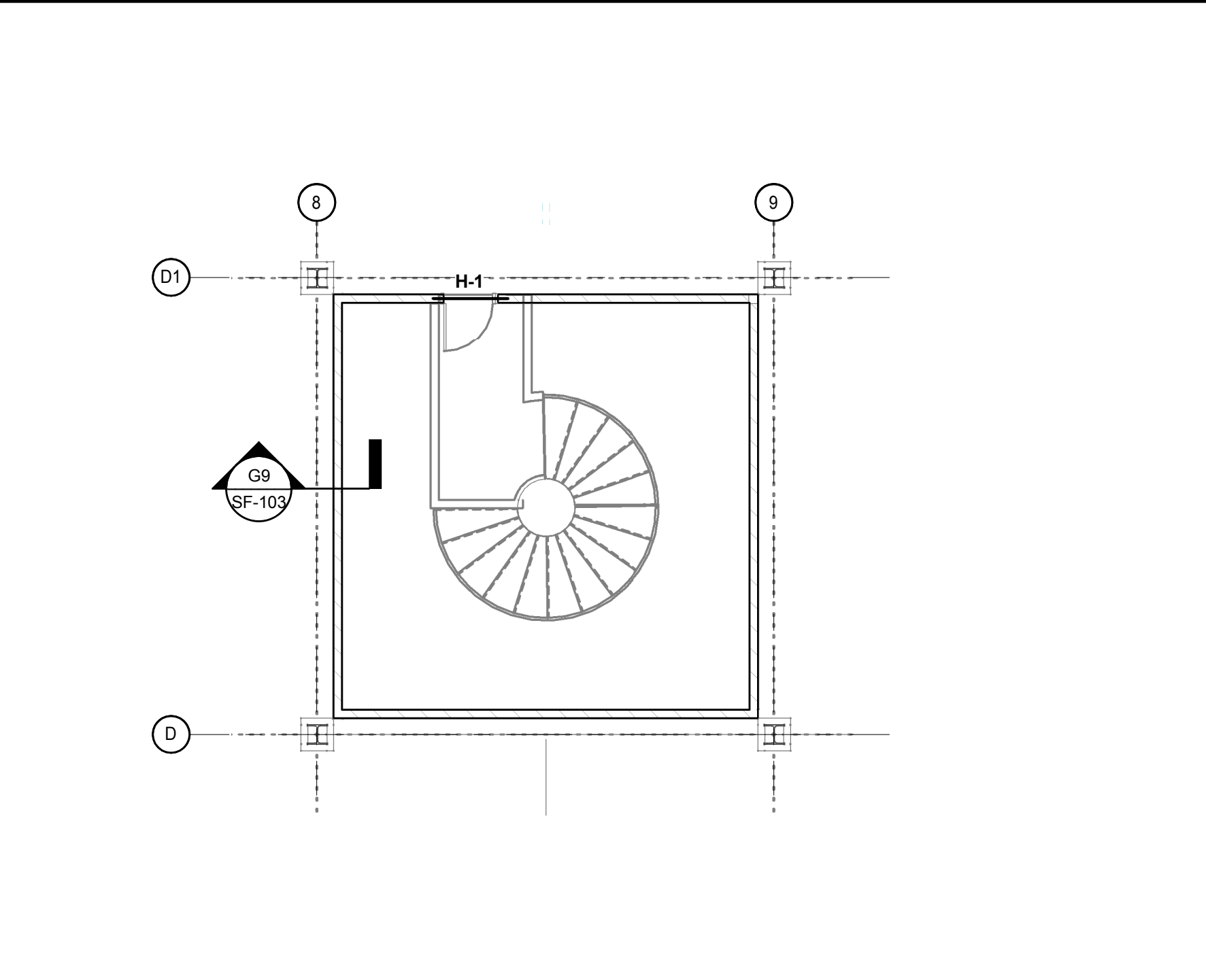
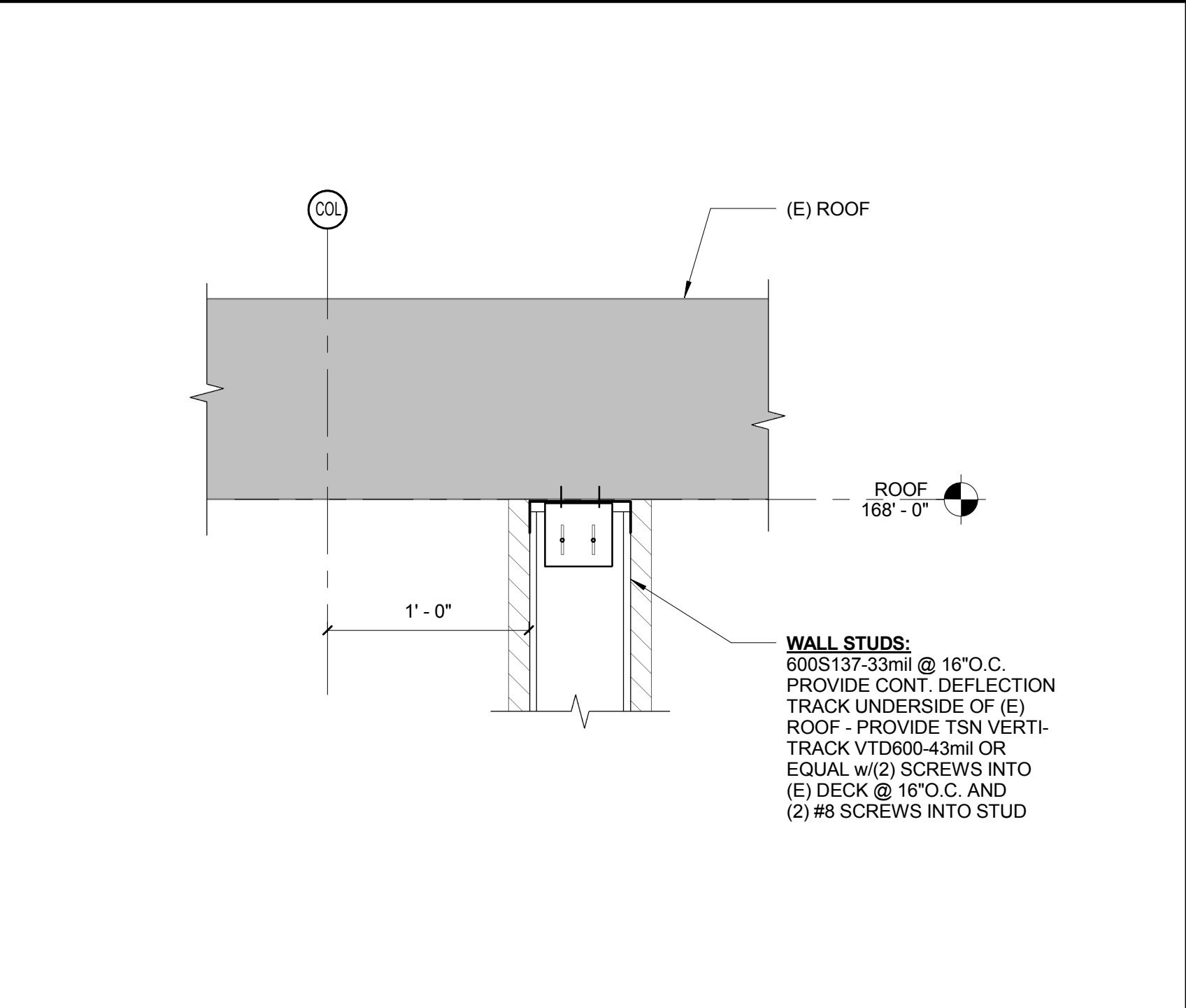
SCALE:  
AS SHOWN

ISSUE: 12 FEB 16

PERMIT SET

TITLE  
STRUCTURAL -  
PART PLANS AND  
DETAILS

SHEET  
SF-103



**CFMF FASTENERS AND CONNECTORS:**

CONNECTOR	SUBSTRATE	DESCRIPTION	PRODUCT
SCREWS	METAL TRACK	#12 x 5/8" PAN HEAD	GENERIC
	STUD-TO-STUD	#12 x 5/8" HEX HEAD	GENERIC
P.A.F.'s	METAL TO STRUCT. STEEL	#12-24 x 1 1/4" HEX HEAD, #5 TIP	BUILDEX "TEKS" HILTI KWIK-PRO
	WOOD FRMG or PLWD	#12-20 x 2 3/4" PHILLIPS FLAT HEAD, #4 WINGS	BUILDEX "TEKS" HILTI KWIK-PRO
P.A.F.'s	CONCRETE or GROUTED CMU	0.157"Ø x 1 1/4"	HILTI X-U
	STRUCTURAL STEEL	0.157"Ø x 5/8"	HILTI X-U

**NOTES:**  
 1. SEE SECTIONS AND DETAILS FOR LOCATION AND NUMBER OF CONNECTORS

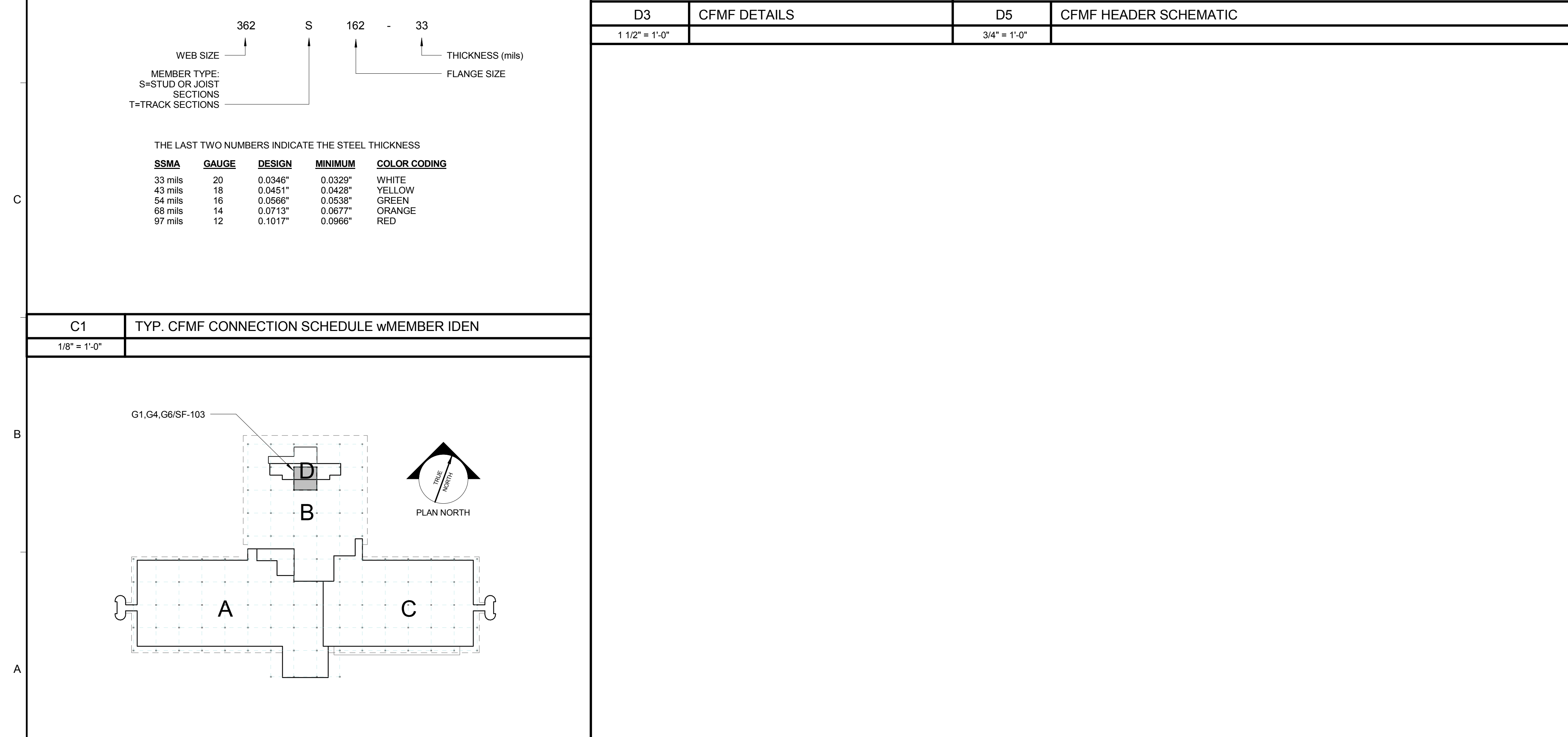
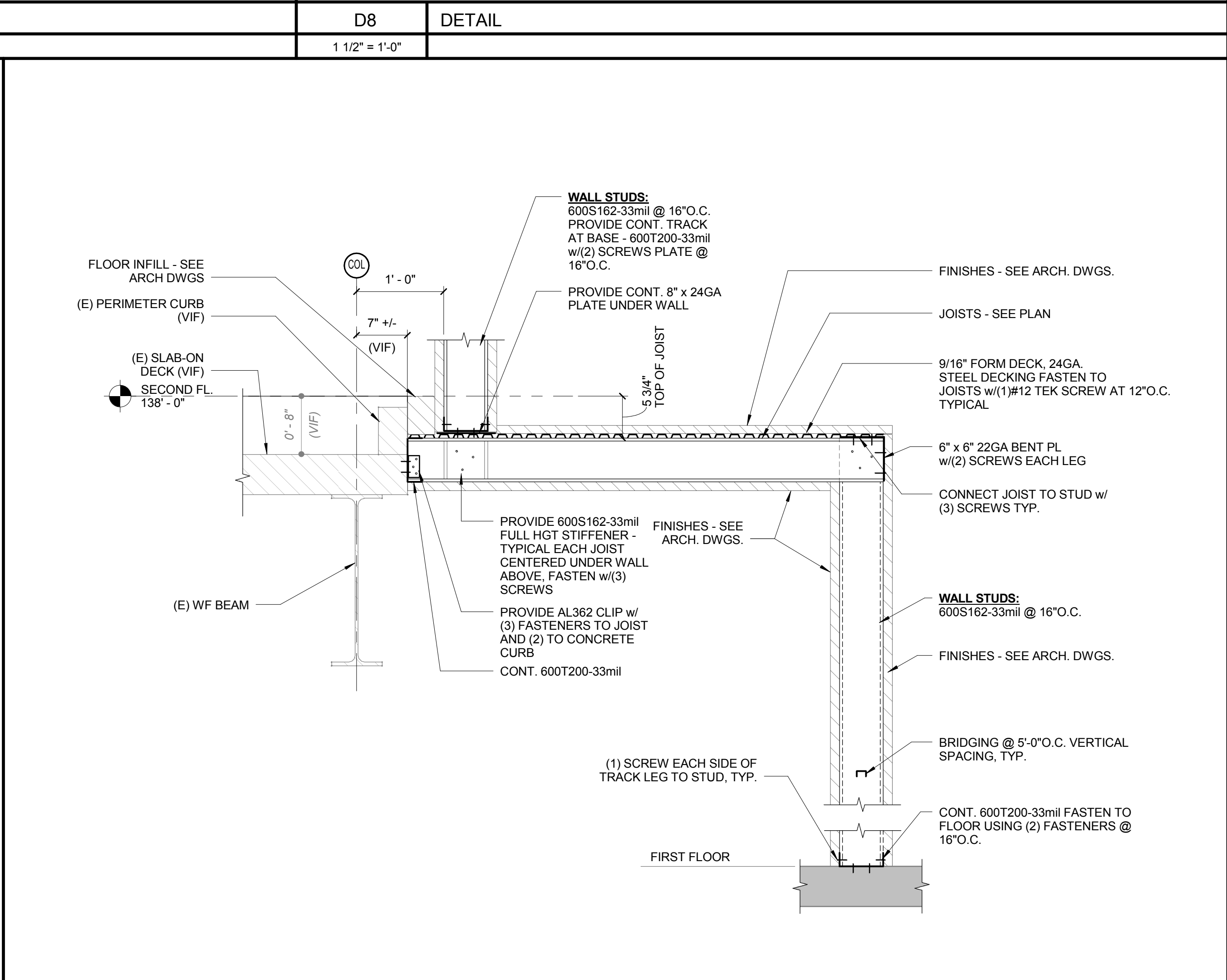
**MEMBER IDENTIFICATION:**

**NOTES:**  
 1. MEMBER TYPES AND SIZES SHOWN IN THIS DRAWING SET FOLLOW THE STEEL STUD MANUFACTURERS ASSOCIATION (SSMA) STANDARDS. ANY MANUFACTURER WHOSE PRODUCT GEOMETRIES MEET OR EXCEED SSMA STANDARDS ARE ACCEPTABLE.  
 2. PLATFORM DESIGN LIVE LOAD = 60PSF  
 3. BUILDING CODE:  
 A. INTERNATIONAL BUILDING CODE - 2009 EDITION  
 B. ASCE-7-05 MINIMUM DESIGN LOADS FOR BUILDINGS OTHER STRUCTURES

MEMBER TYPE:  
 S=STUD OR JOIST SECTIONS  
 T=TRACK SECTIONS

THE LAST TWO NUMBERS INDICATE THE STEEL THICKNESS

SSMA	GAUGE	DESIGN	MINIMUM	COLOR CODING
33 mils	20	0.0346"	0.0329"	WHITE
43 mils	18	0.0451"	0.0428"	YELLOW
54 mils	16	0.0568"	0.0538"	GREEN
68 mils	14	0.0713"	0.0677"	ORANGE
97 mils	12	0.1017"	0.0966"	RED



G1	NEW_2ND FL FRAMING	G4	NEW_3RD FL FRAMING	G6	NEW ROOF FRAMING	G9	DETAIL
1/8" = 1'-0"		1/8" = 1'-0"		1/8" = 1'-0"		1 1/2" = 1'-0"	
D3	CFMF DETAILS	D5	CFMF HEADER SCHEMATIC	D8	DETAIL		
1 1/2" = 1'-0"		3/4" = 1'-0"		1 1/2" = 1'-0"			
A1	KEYPLAN	A7	DETAIL PARALLEL WITH DECK SPAN				
1/8" = 1'-0"		1" = 1'-0"					