

International Building Code and Life Safety Code Summary

EDITIONS REFERENCED
International Building Code 2009
NFPA 101 - Life Safety Code 2009

GENERAL DESCRIPTION OF WORK
Total 2nd floor area: 67,719 sf
Approximate area of renovation: 740 sf
Construction types: Type Ila non-combustible, protected





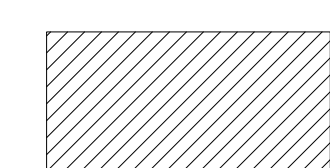
OCCUPANCY
The predominant occupancy of the building is Offices. The building also includes assembly and storage occupancies. Assembly spaces intended exclusively for use by employees as part of their training and meeting functions.

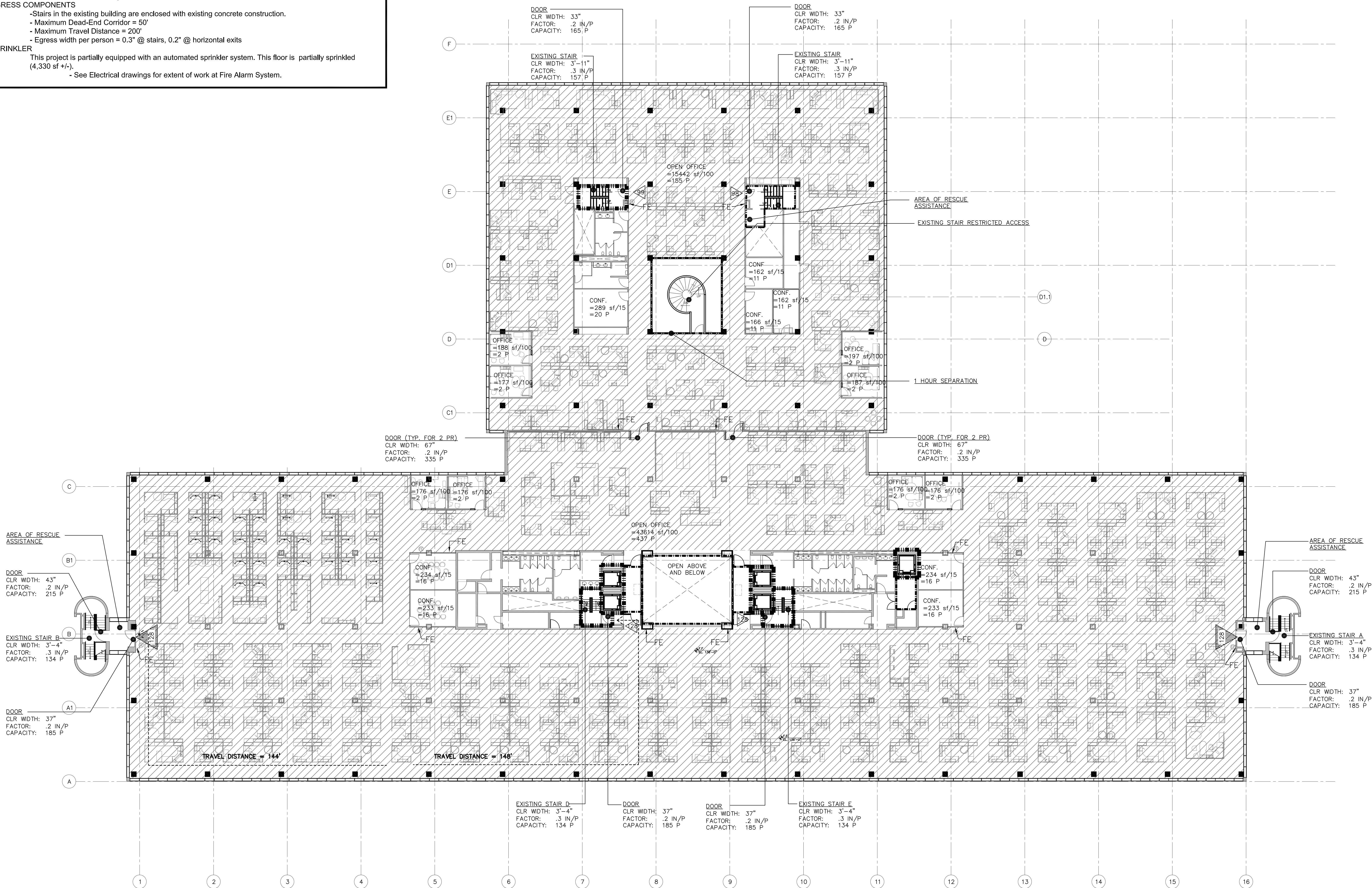
FIRE RESISTANCE
- 2-hr separations at Exit Stairs
- 1-hr separations at Elevator Lobbies
- Doors shall be self closing at barriers.

EGRESS COMPONENTS
- Stairs in the existing building are enclosed with existing concrete construction.
- Maximum Dead-End Corridor = 50'
- Maximum Travel Distance = 200'
- Egress width per person = 0.3" @ stairs, 0.2" @ horizontal exits

SPRINKLER
This project is partially equipped with an automated sprinkler system. This floor is partially sprinkled (4,330 sf +/-).
- See Electrical drawings for extent of work at Fire Alarm System.

GRAPHIC LEGEND:

-  Occupant Load
-  Cumulative Occupant Load
-  1-hour Fire/Smoke Separation
-  2-hour Fire/Smoke Separation
-  Open Office Area



1 HOI-SECOND FLOOR CODE DIAGRAM
1/16" = 1'-0"

