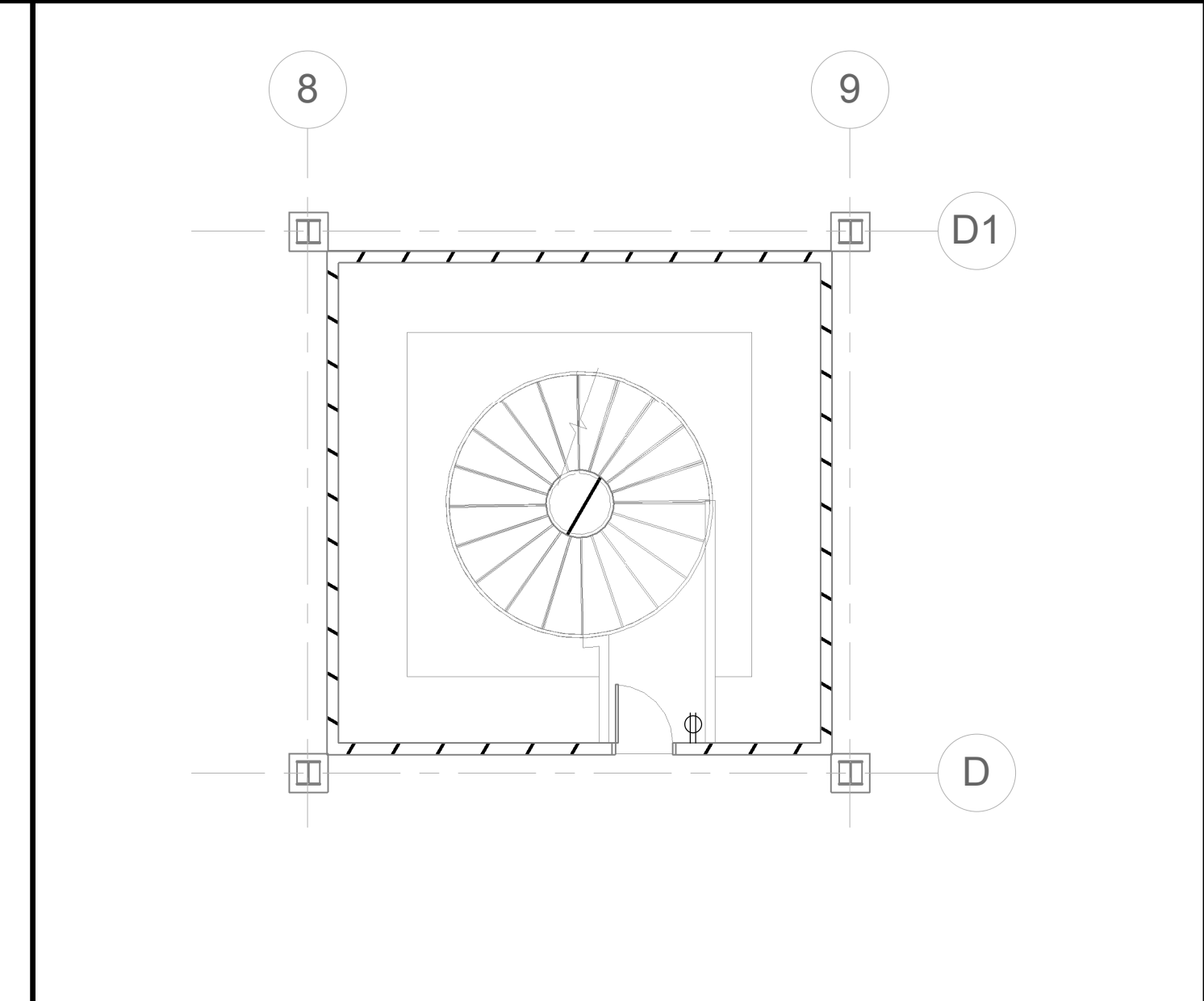
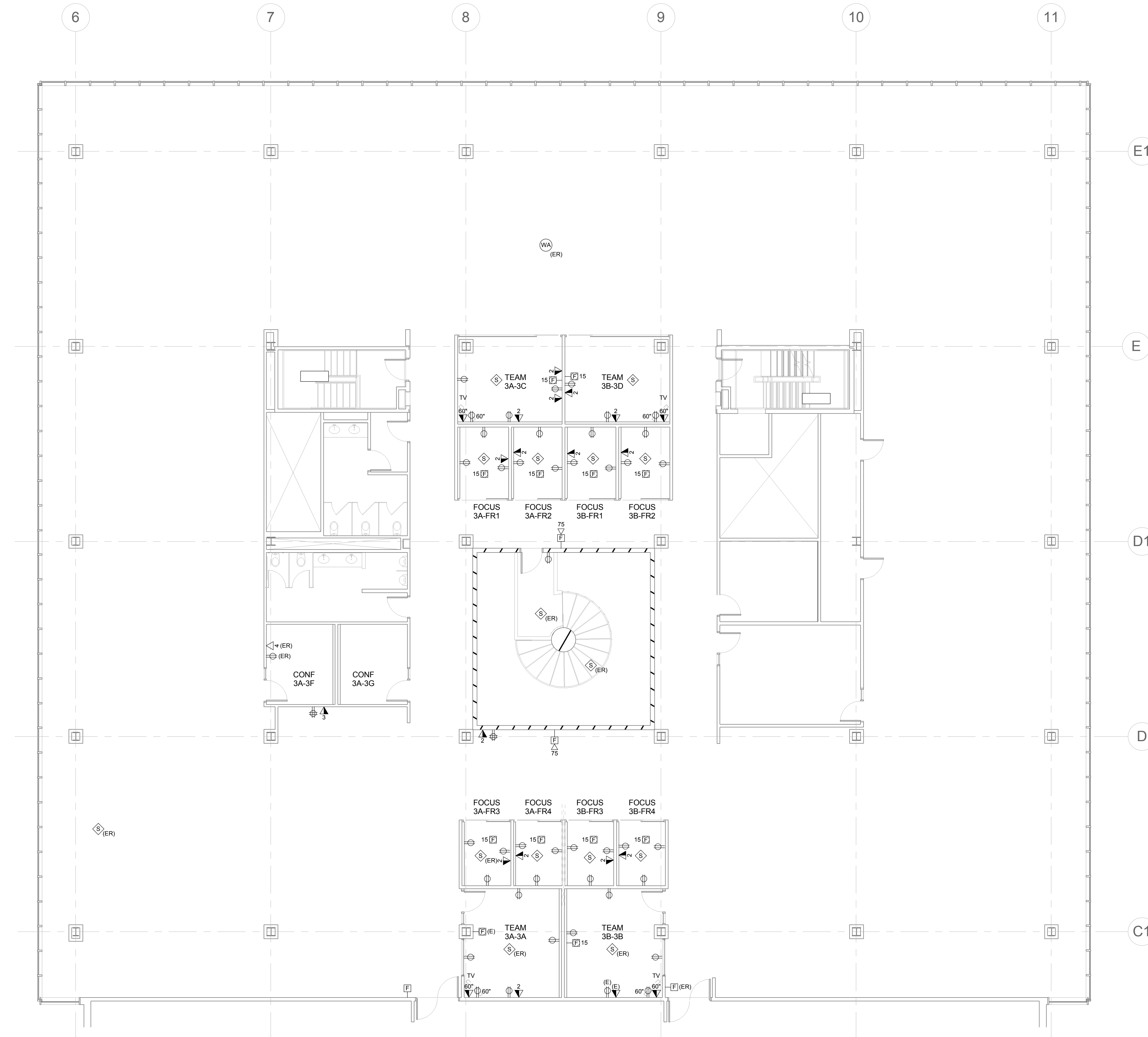
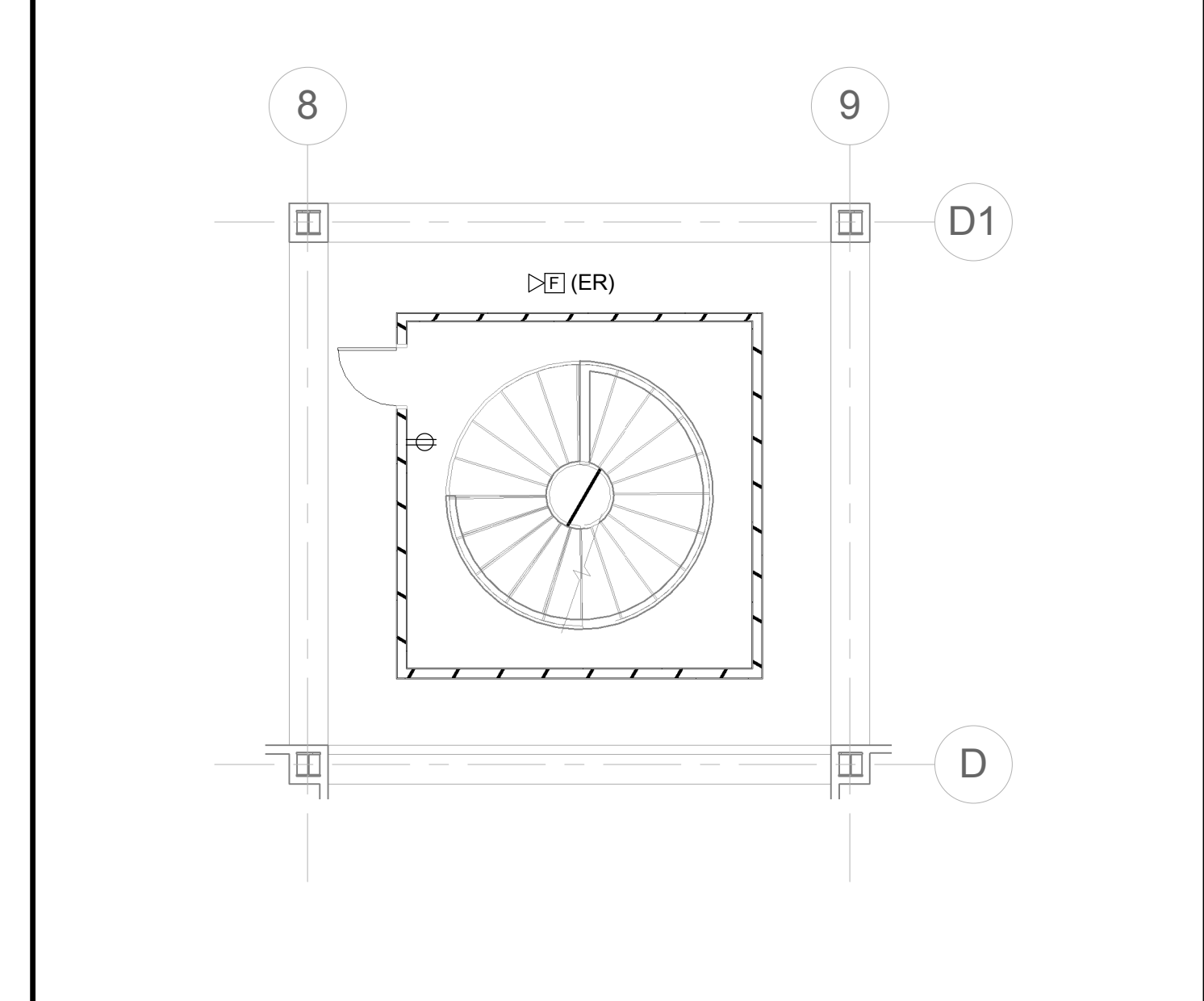


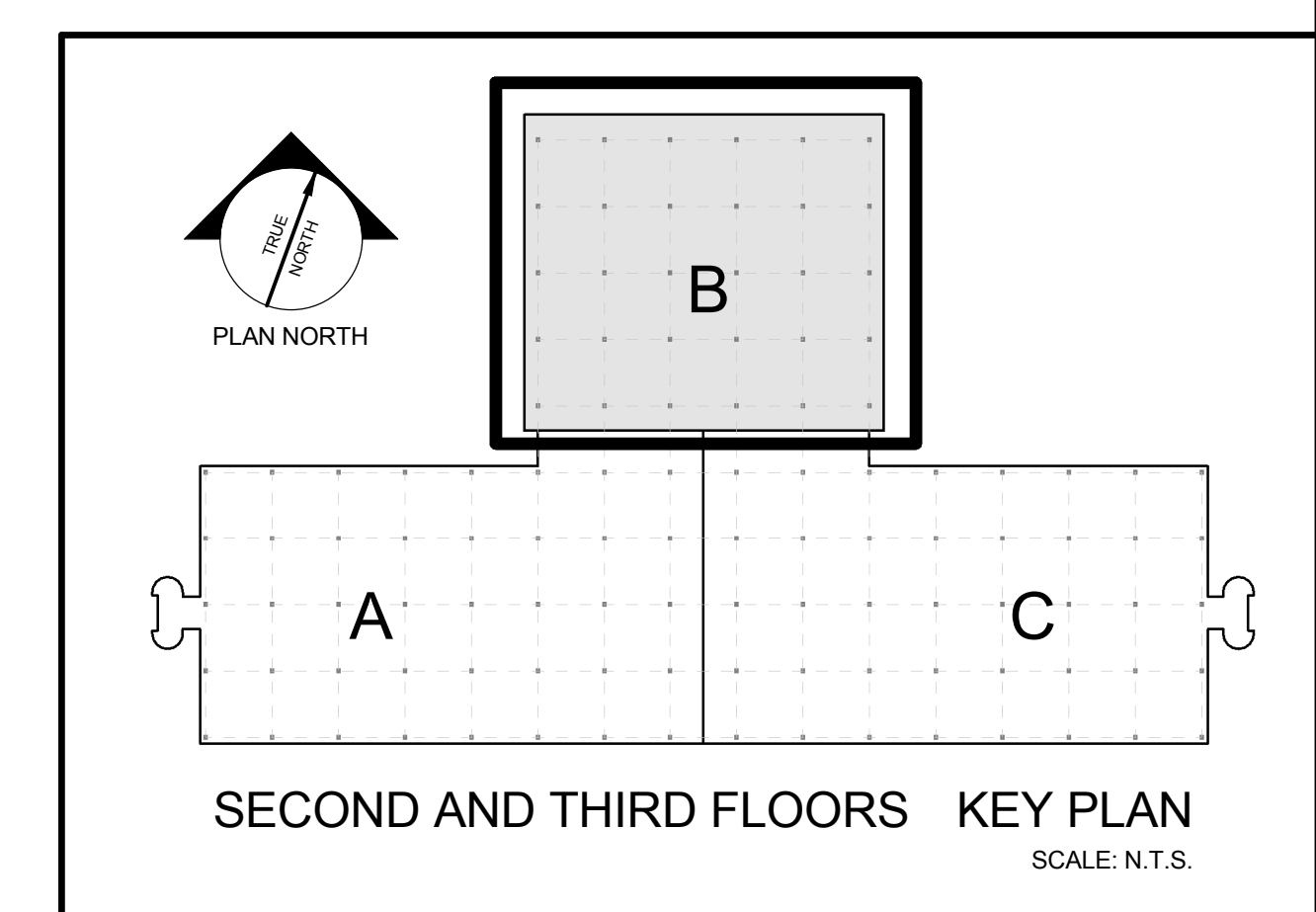
NOTE:
EXISTING ITEMS TO REMAIN UNLESS NOTED OTHERWISE



G9 SECOND FLOOR - STAIR ENCLOSURE - POWER PLAN
1/8" = 1'-0"



E9 FIRST FLOOR - STAIR ENCLOSURE - POWER PLAN
1/8" = 1'-0"



A9 KEY PLAN SECOND AND THIRD FLOORS

A1 THIRD FLOOR POWER AND SYSTEMS PLAN
1/8" = 1'-0"

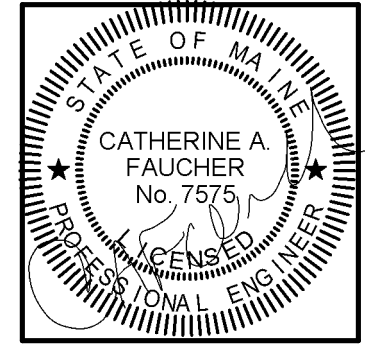


Allied Project No: 14085
CAD file:

COPYRIGHT 2014
PDT Architects
Reuse or reproduction of the
contents of this document is not
permitted without written
permission of PDT Architects.

2016 UNUM - HO1 3RD FLOOR FIT UP (NORTH WING)
2211 CONGRESS STREET, PORTLAND, MAINE 04112

No.	Date	Description
Revision Schedule		



JOB NO.
14-074

DRWN: CHK:
Author Checker

SCALE:
AS SHOWN

ISSUE: 12 FEB 16

PERMIT SET

TITLE
THIRD FLOOR
POWER AND
SYSTEMS PLAN

SHEET
EP103