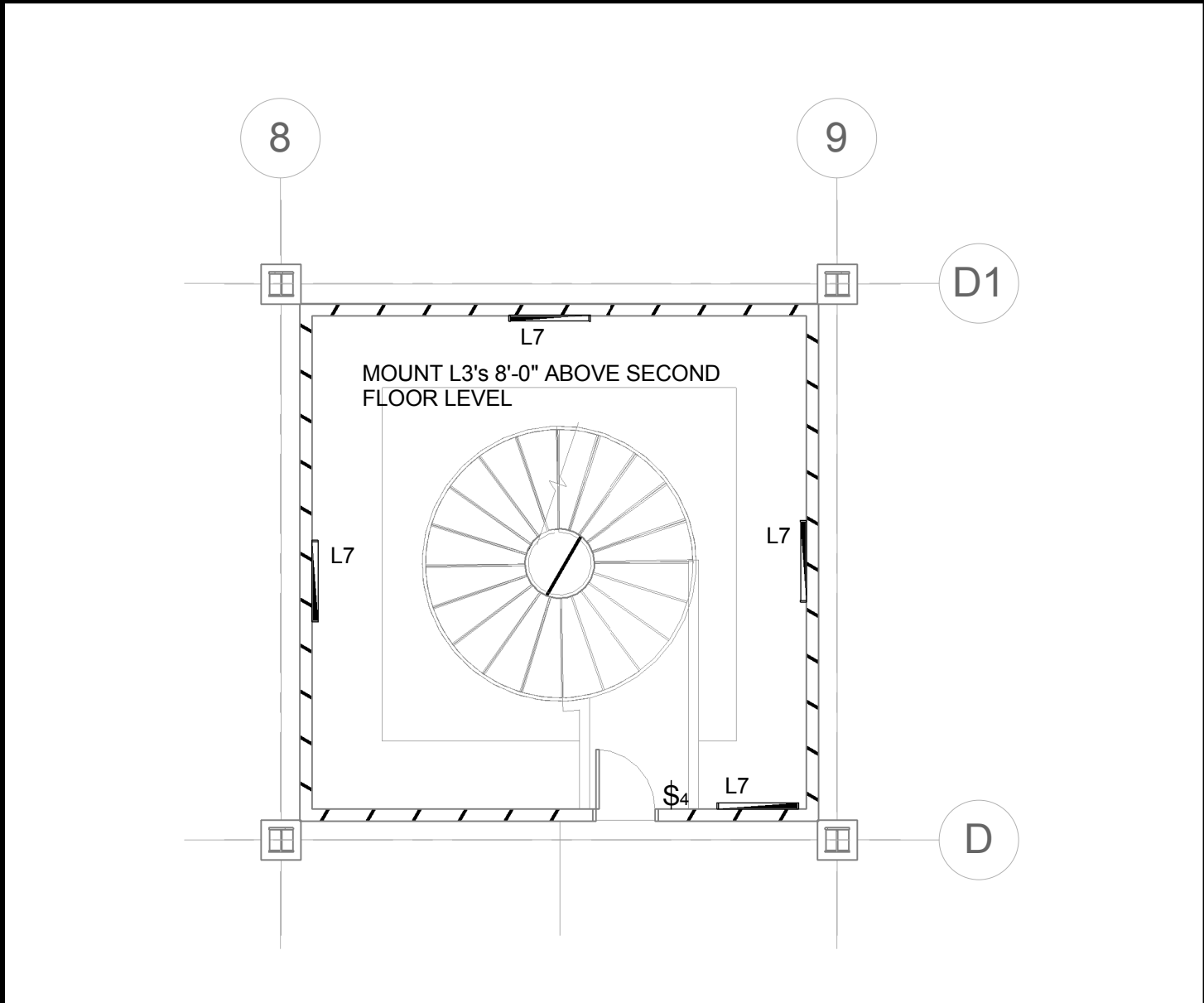
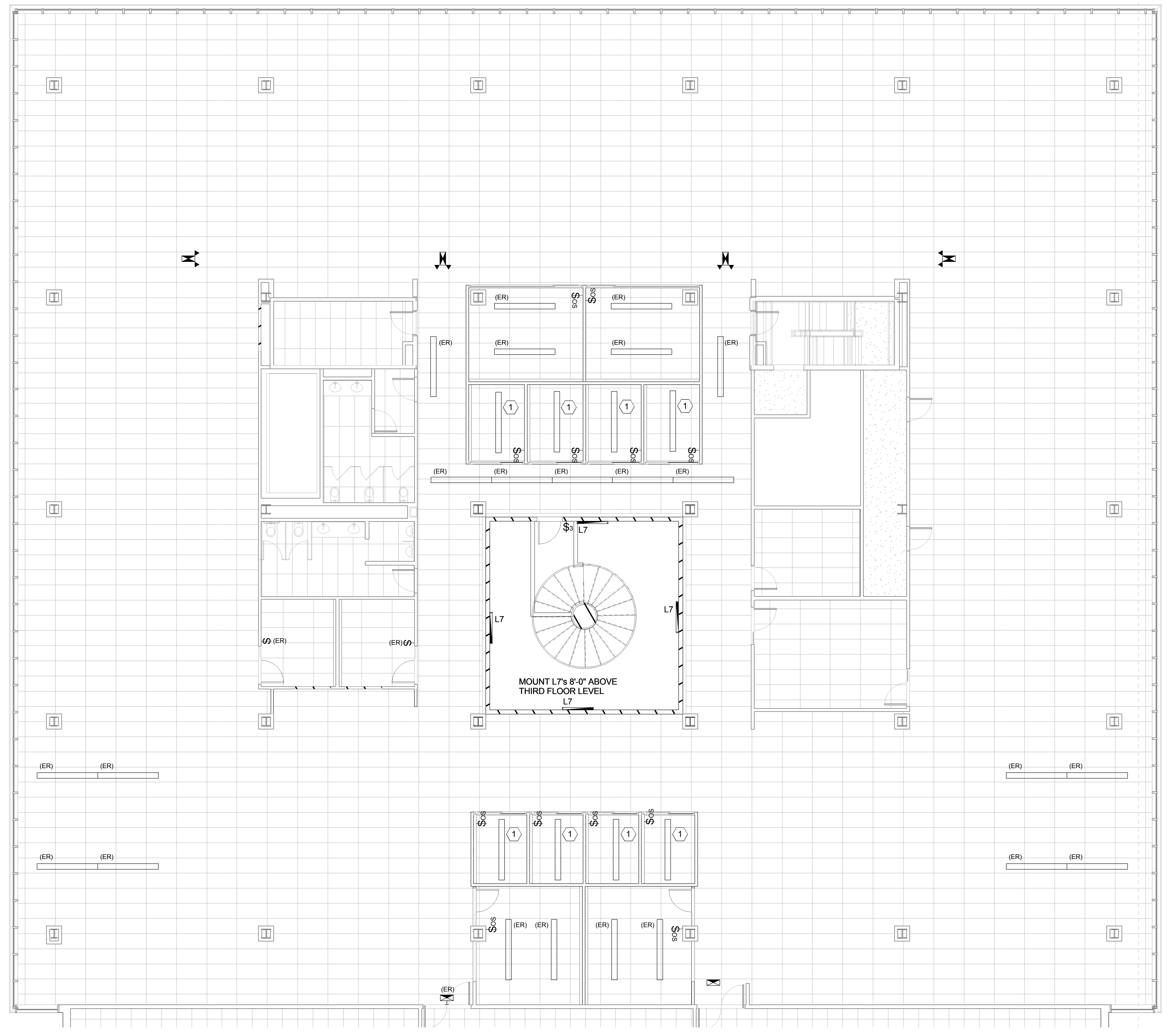
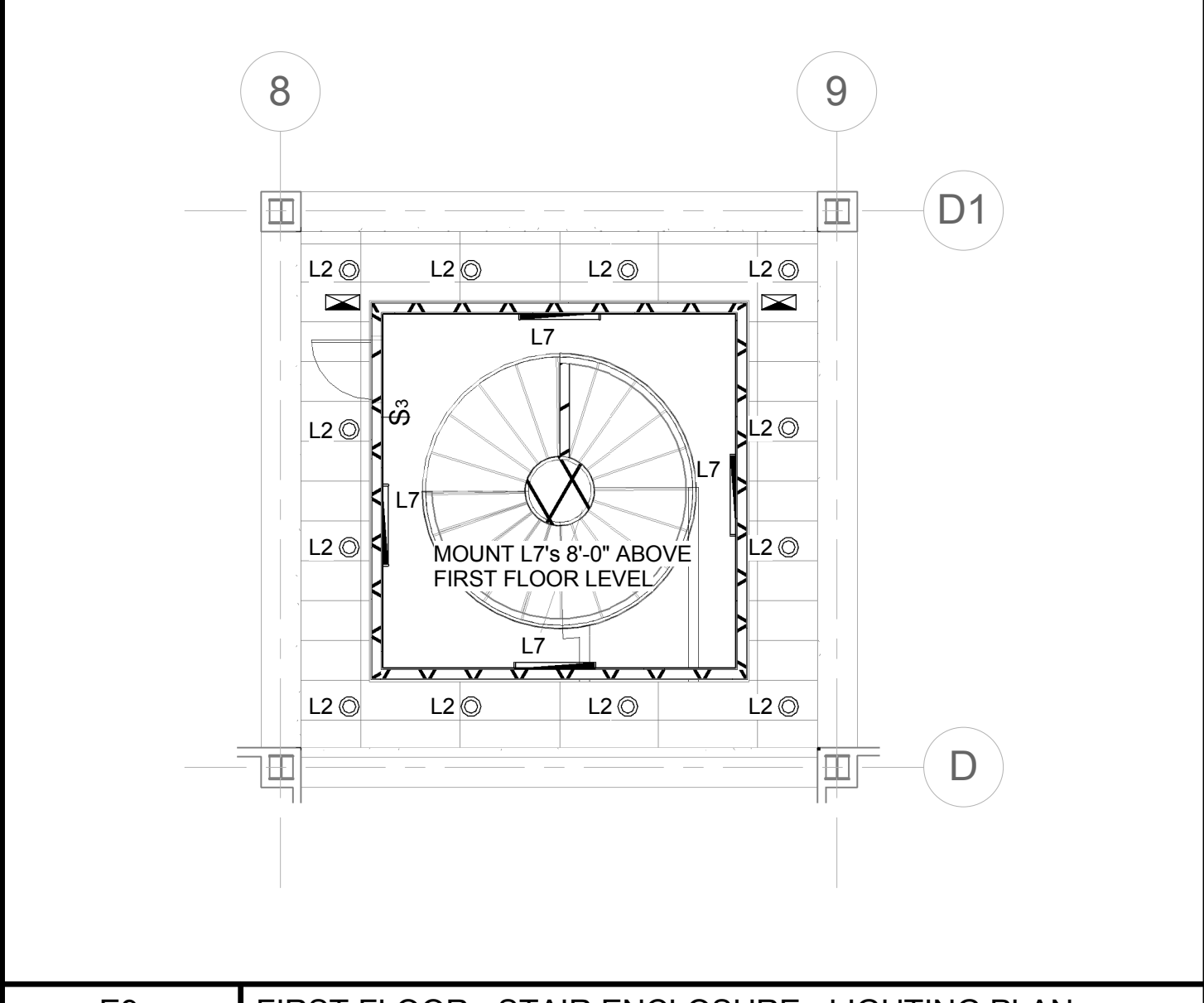


LUMINAIRE SCHEDULE									
TYPE	DESCRIPTION	MFR	CATALOG SERIES NUMBER SEE NOTE 1	MOUNTING	VOLTS	LAMP			KEY NOTES
						QTY PER FIXTURE	WATTS	TYPE	
F1	2 X 2 RECESSED DIRECT/INDIRECT	WILLIAMS	DIG-S22	RECESSED	277	2	40	TT/3500K	
F3	LINEAR PENDANT	FINELITE	SS(LENGTH AS SHOWN ON PLANS)2T5 SPEC DCACRE	PENDANT	277	2	28	T5/3500K	6
L2	ROUND DOWNLIGHT	PRESCOLITE	LED MD8LED3L30K 88MD WFL45 CL.WT	RECESSED	277	-	-	LED ARRAY 3500K	
L3	MINI SQUARE DOWNLIGHT	BEGA	L6899- POLISHED STAINLESS STEEL	RECESSED	277	-	-	LED ARRAY 3500K	
L7	STAIRWELL LIGHT	KENALL	MLH45-48-F-MM-CP-LED-45-L35K	WALL SURFACE	277	-	50	LED ARRAY 3500K	
L8	CONTINUOUS LINEAR LED WITH FLUSH LENS	AXIS LIGHTING	BBRLED-B3-MF-750-80-35-S0-SF-W/D	RECESSED	277	-	7 WFT	LED ARRAY 3500K	
	EXIT SIGN WITH GREEN LETTERING	DUAL-LITE	LX U G W	SURFACE	277	-	2.24	LED ARRAY 3500K	3
NOTES									
1 NOTE THAT THESE NUMBERS ARE NOT COMPLETE CATALOG #S. PROVIDE ALL REQUIREMENTS ON SCHEDULE, NOTES, SPECS, AND DRAWINGS COMBINED.									
2 NOT USED									
3 PROVIDE WALL, CEILING, OR PENDANT MOUNTING AS INDICATED ON PLANS. PROVIDE NUMBER OF FACES AND ARROWS AS INDICATED.									
4 PROVIDE PROGRAMMED START BALLAST WITH ROOMS THAT HAVE OCCUPANCY SENSORS.									
5 VERIFY CEILING STRUCTURE AND MOUNTING HEIGHT PRIOR TO ORDERING ANY LIGHT FIXTURES.									
6 2 LAMPS PER CROSS SECTION									

NOTE:
EXISTING ITEMS TO REMAIN UNLESS NOTED OTHERWISE



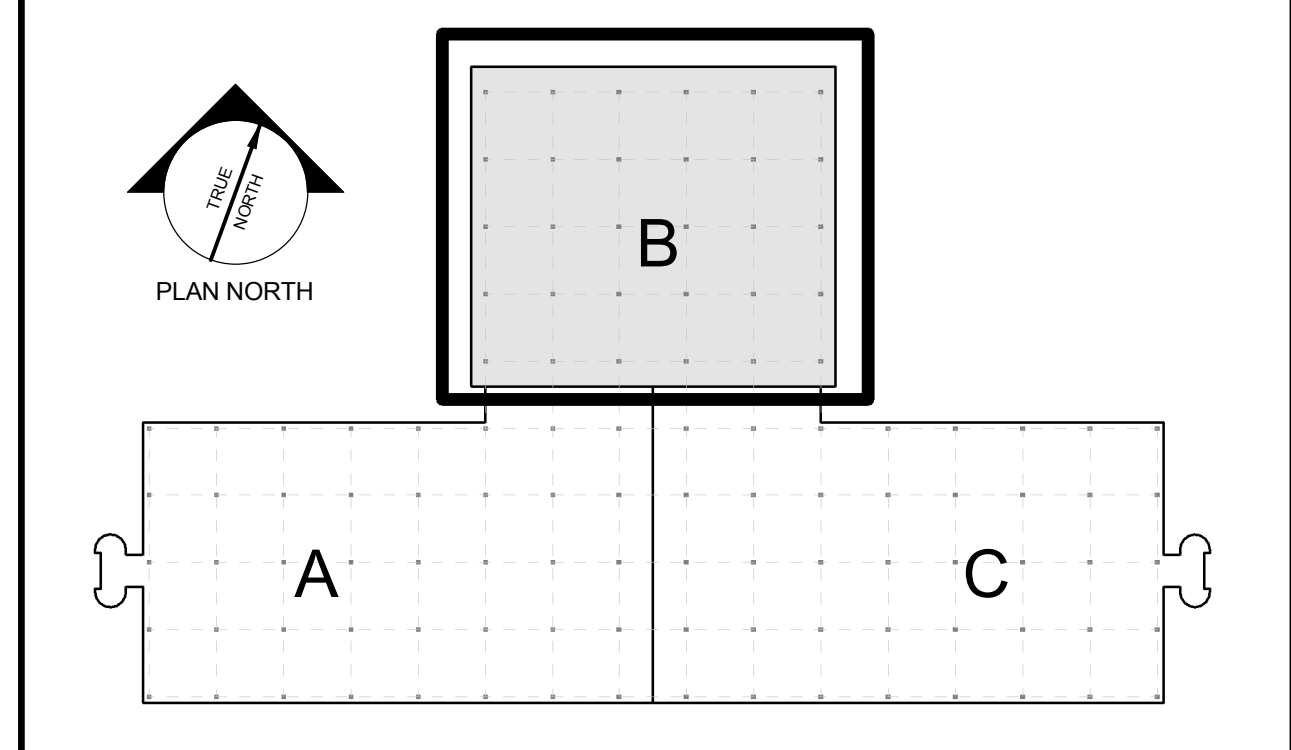
G9 SECOND FLOOR - STAIR ENCLOSURE - LIGHTING PLAN
1/8" = 1'-0"



E9 FIRST FLOOR - STAIR ENCLOSURE - LIGHTING PLAN
1/8" = 1'-0"

① PENDANT FIXTURE SHALL BE FINELITE SERIES S12 LED-ID, MOUNT WITH BOTTOM OF FIXTURE 8' AFF. FIXTURES SHALL BE FURNISHED BY OWNER AND INSTALLED BY CONTRACTOR.

B9 KEY NOTES



A9 KEY PLAN SECOND AND THIRD FLOORS

A1 THIRD FLOOR LIGHTING PLAN
1/8" = 1'-0"

PDT ARCHITECTS
48 DARTMOUTH STREET
PORTLAND, MAINE 04101
207-775-1059
www.pdtarchts.com

Allied Engineering
Structural Mechanical
Electrical Commissioning

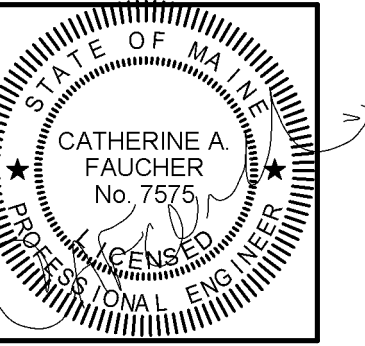
160 Veranda Street
Portland, Maine 04103
T: 207.221.2260
F: 207.221.2266
Web: www.allied-eng.com

Allied Project No: 14085
CAD file:

COPYRIGHT 2014
PDT Architects
Reuse or reproduction of the
contents of this document is not
permitted without written
permission of PDT Architects.

2016 UNUM - HO1 3RD FLOOR FIT UP (NORTH WING)
2211 CONGRESS STREET, PORTLAND, MAINE 04112

No.	Date	Description
Revision Schedule		



JOB NO.
14-074

DRWN: CHK:
Author Checker

SCALE:
AS SHOWN

ISSUE: 12 FEB 16

PERMIT SET

TITLE
THIRD FLOOR
LIGHTING

SHEET
EL 103