

KEYNOTE LEGEND - DEMOLITION	
KEY	DESCRIPTION
1	REMOVE WALL AS REQUIRED FOR NEW OPENING(S). COORDINATE WITH PLANS & ELEVATIONS OF NEW WORK.
1A	WALL REMOVAL BY ABATEMENT
2	REMOVE WALL FINISH LAYER
3	REMOVE DOOR, FRAMED OPENING OR BORROWED LITE, FRAME, AND THRESHOLD IF ANY, UNO
3A	DOOR SYSTEM REMOVAL BY ABATEMENT
4	REMOVE FLOOR FINISH LAYER
5	REMOVE DIAMOND PLATE FLOOR COVER
6	REMOVE / SALVAGE EXISTING PLUMBING FIXTURE AND STORE FOR REINSTALLATION @ NEW LOCATION (SEE MECHANICAL / PLUMBING DRAWINGS)
7	REMOVE STOREFRONT SYSTEM
8	REMOVE STOREFRONT SYSTEM, STORE AND PROTECT FOR REINSTALLATION @ NEW LOCATION
9	NOT USED
10	REMOVE CEILING SYSTEM AS INDICATED BY DASHED LINES. REMOVE ALL HANGING SIGNAGE, SPEAKERS, FIRE ALARMS / DETECTORS, CEILING LIGHT FIXTURES, AND MECHANICAL GRILLES (SEE ELECTRICAL AND MECHANICAL DRAWINGS)
11	REMOVE GWB SOFFIT
13	REMOVE ENTRYWAY FLOOR MAT AND SALVAGE FOR OWNER
14	SUSPENDED CEILING SYSTEM TO BE REMOVED UNDER SEPERATE ABATEMENT CONTRACT
15	REMOVE POST MOUNTED CARD READER AND POST FOR RELOCATION
17	REMOVE CORNER WINDOW, WINDOW SILL, AND ASSOCIATED ATTACHMENTS / BLOCKING
18	REMOVE GWB SOFFITS BELOW STRINGER AND INTERMEDIATE LANDINGS
19	REMOVE STAIR RAILING SYSTEM AT ALL LEVELS INCLUDING INTERMEDIATE LANDINGS
20	NOT USED

GENERAL PLAN NOTES:

- PATCH AND REPAIR ALL EXISTING WALLS, FLOORS, CEILINGS, AND FINISHES AFFECTED OR DAMAGED BY TEMPORARY PARTITION REMOVAL. NOT ALL AREAS HAVE BEEN INDICATED ON PLAN. SEE TEMPORARY PARTITION LAYOUTS FOR AREAS OF IMPACT.
- SEE CODE PLANS FOR LOCATIONS OF RATED WALLS AND ENSURE ALL EXISTING WALLS IN THOSE LOCATIONS EXTEND TO DECK AND ALL PENETRATIONS ARE PROPERLY FIRESTOPPED.
- SOME OF THE NEW WORK MAY BE AFFECTED BY PREVIOUS ABATEMENT WORK. CONFIRM ANY DISCREPANCIES WITH ARCHITECT PRIOR TO PROCEEDING WITH WORK.
- WALL INFILLS MARKED WITH WALL TYPE. IF INDICATED TYPE DOES NOT MATCH EXISTING THICKNESS, MODIFY TO MATCH, SEE A500 FOR WALL INFILL DETAILS.

GENERAL DEMOLITION AND REMOVAL NOTES:

FLOOR NOTES:

- IN ADDITION TO THE NOTES ON THESE SHEETS, REFER TO THE PROJECT MANUAL.
- THE DEMOLITION DRAWINGS PROVIDE GENERAL COORDINATION INFORMATION ONLY, AND ARE SCHEMATIC IN NATURE. THEY DO NOT IDENTIFY ALL INDIVIDUAL ITEMS TO BE REMOVED. IN INSTANCES WHERE WALLS ARE INDICATED FOR REMOVAL, REMOVE ALL DOORS, WINDOWS, AND MISCELLANEOUS HARDWARE, ELECTRICAL AND MECHANICAL ITEMS CONTAINED WITHIN THE WALL. REMOVE ANY EXISTING CONSTRUCTION WHICH LOGICALLY IS IN THE WAY OF NEW CONSTRUCTION OR PROHIBITS THE NEW CONSTRUCTION SHOWN ON THE ARCHITECTURAL DRAWING.
- COORDINATE REMOVAL OF EXISTING MECHANICAL, ELECTRICAL, PLUMBING, AND STRUCTURAL SYSTEMS WITH RESPECTIVE DRAWINGS.
- PROTECT ALL EXISTING FLOORING FINISHES TO REMAIN FROM DAMAGE.
- SEE PHASING PLANS FOR SEQUENCE OF WORK AND TEMPORARY PARTITION LOCATIONS.
- SALVAGE DOOR HARDWARE AND ALL AUTO DOOR OPERATORS FOR REUSE.

CEILING NOTES:

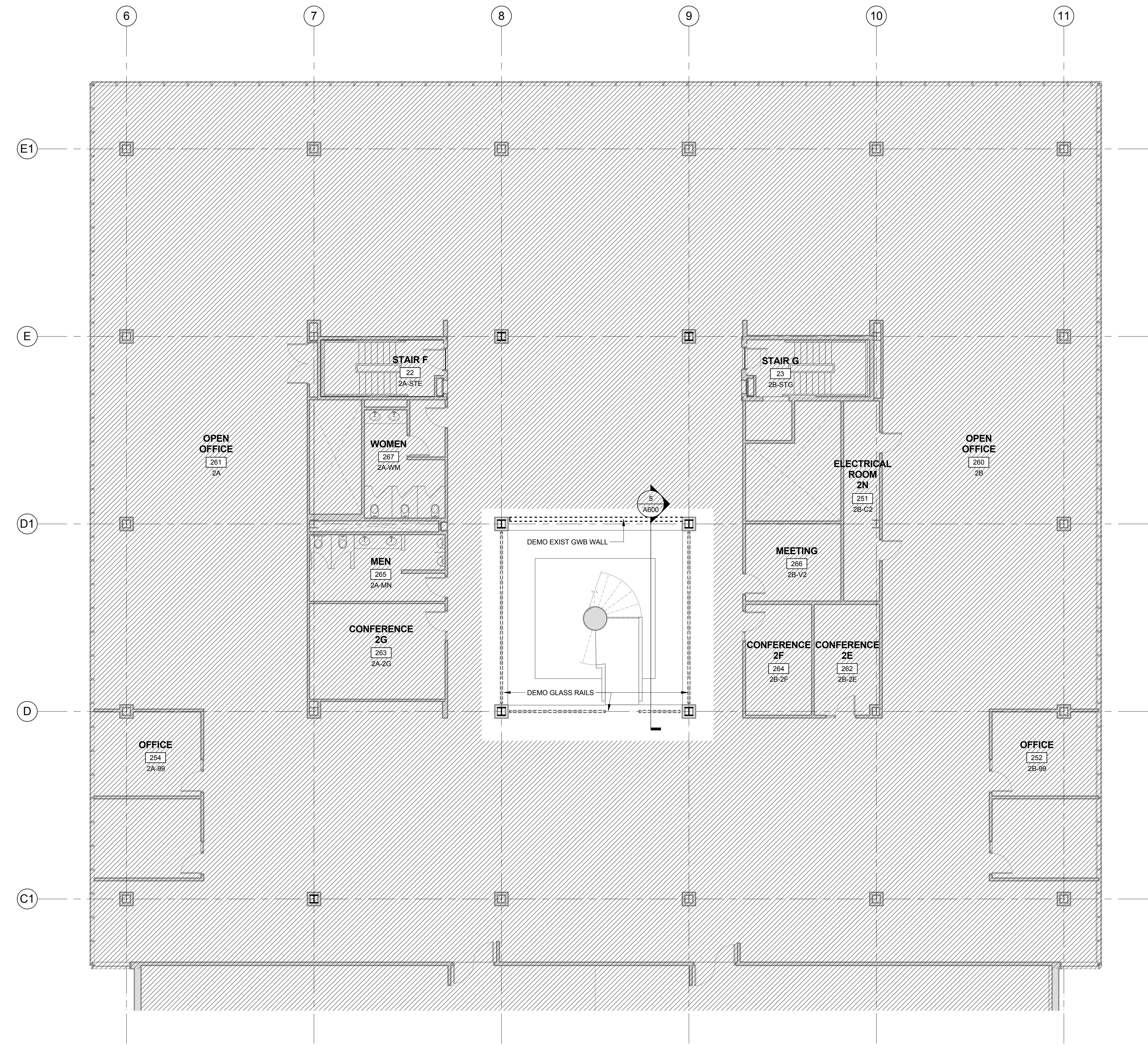
- ALL CEILING MOUNTED EQUIPMENT TO BE SALVAGED FOR REUSE UNO.

GENERAL NOTES:

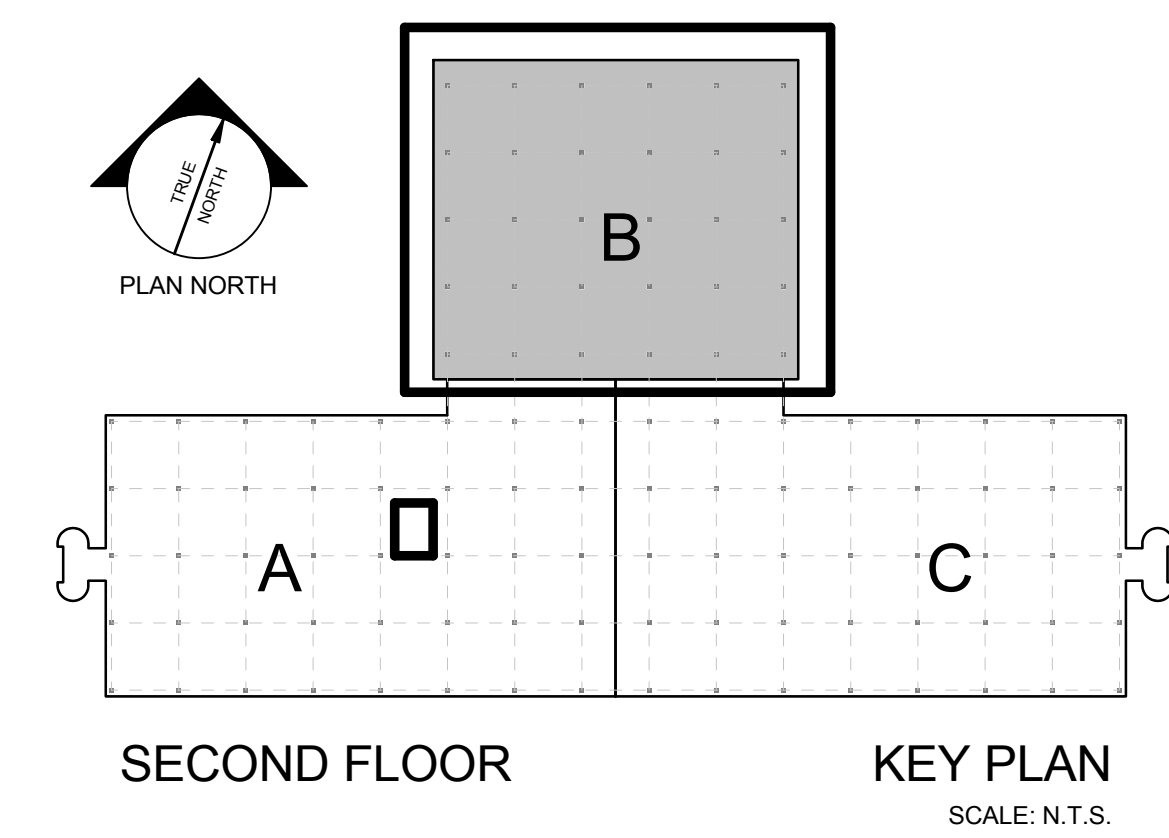
- OWNER RESPONSIBLE TO REMOVE LOOSE AND SURFACE MOUNTED EQUIPMENT AND FURNITURE
- EXTENT OF DEMOLITION TO BE COORDINATED W/ ABATEMENT LOCATIONS.
- REMOVE AND REINSTALL EXISTING CEILING AND COMPONENTS AS REQUIRED TO INSTALL SPRINKLER SYSTEM.

GRAPHIC LEGEND

- EXISTING WALLS TO REMAIN
- WALLS TO BE DEMOLISHED
- NEW WALLS
- EXISTING ADA/POWER ASSIST
- EXISTING FIRE EXTINGUISHER
- EXISTING FIRE EXTINGUISHER WITH CABINET
- FIRE EXTINGUISHER
- FIRE EXTINGUISHER WITH CABINET
- ADA/POWER ASSIST
- INSTALL RATED FLOOR BOX
- FLOOR DRAIN
- AREA NOT IN SCOPE OF WORK
- AREA OF FLOOR DEMOLITION
- AREA OF FIREPROOFING
- AREA OF SPRINKLER WORK ONLY
- KEYNOTE



A5 SECOND FL. - NORTH WING DEMO PLAN
1/8" = 1'-0"

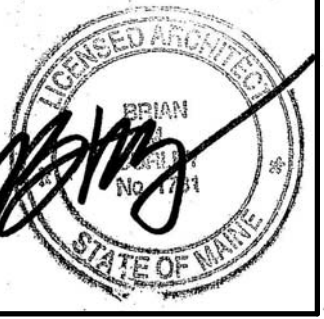


Allied Project No: 14072
CAD file: 14072M.DWG

COPYRIGHT 2016
PDT Architects
Reuse or reproduction of the contents of this document is not permitted without written permission of PDT Architects.

2016 UNUM - HO1 3RD FLOOR FIT UP (NORTH WING)
 2211 CONGRESS STREET, PORTLAND, MAINE 04112

No.	Date	Description
		Revision Schedule



JOB NO:
14-074

DRWN: SMD CHK: CDR

SCALE:
As indicated

ISSUE: 12 FEB 2016
PERMIT SET

TITLE:
2ND FLR.
DEMOLITION
PLANS

SHEET:
AD102