

| Door # | Room Name | Unum Tag | Door |          |          | Frame |          |      |           | Wall      |      | Threshold | Classification | Access Control | Hardware Set | Key | Closer | Exit Device | Plates | Operators | Notes: |  |
|--------|-----------|----------|------|----------|----------|-------|----------|------|-----------|-----------|------|-----------|----------------|----------------|--------------|-----|--------|-------------|--------|-----------|--------|--|
|        |           |          | Type | Material | Size     | Label | Material | Type | Head Dtl. | Jamb Dtl. | Sill |           |                |                |              |     |        |             |        |           |        | Type   |
| H1     | Stair H   |          | F    | HM       | 3-0 x7-0 | 60    | HM       | 1A   |           |           | -    | GWB       | 1hr            |                | Storeroom    | N/A | 1      |             | x      | -         | N/A    | Restricted access, authorized personnel only - Spiral Stair decommissioned |
| H2     | Stair H   |          | F    | HM       | 3-0 x7-0 | 60    | HM       | 1A   |           |           | -    | GWB       | 1hr            |                | Storeroom    | N/A | 1      |             | x      | -         | N/A    | Restricted access, authorized personnel only - Spiral Stair decommissioned |
| H3     | Stair H   |          | F    | HM       | 3-0 x7-0 | 60    | HM       | 1A   |           |           | -    | GWB       | 1hr            |                | Storeroom    | N/A | 1      |             | x      | -         | N/A    | Restricted access, authorized personnel only - Spiral Stair decommissioned |

### Finish Schedule

| Room                   | Space ID | N   | S   | E   | W   | Floor  | Base | Ceiling | Doors & Frames | Notes:                            |
|------------------------|----------|-----|-----|-----|-----|--------|------|---------|----------------|-----------------------------------|
| Stair H - First Floor  |          | P-1 | P-1 | P-1 | P-1 | Exist. | -    | open    | P-6            | Outside Face to Receive P-6, RB-3 |
| Stair H - Second Floor |          | P-1 | P-1 | P-1 | P-1 |        | -    | open    | P-7            | Outside Face to Receive P-7, RB-1 |
| Stair H - Third Floor  |          | P-1 | P-1 | P-1 | P-1 |        | -    | open    | P-1            | Outside Face to Receive P-1, RB-1 |

|           |        |     |     |     |     |       |      |        |     |                                      |
|-----------|--------|-----|-----|-----|-----|-------|------|--------|-----|--------------------------------------|
| Team Room | 3A-3C  | P-1 | P-1 | P-1 | P-1 | CPT-2 | RB-2 | Exist. | n/a | Glass Front with Sliding Door System |
| Team Room | 3B-3D  | P-1 | P-1 | P-1 | P-1 | CPT-2 | RB-2 | Exist. | n/a | Glass Front with Sliding Door System |
| Focus     | 3A-FR1 | P-1 | P-1 | P-1 | P-1 | CPT-2 | RB-2 | Exist. | n/a | Glass Front with Sliding Door System |
| Focus     | 3A-FR2 | P-1 | P-1 | P-1 | P-1 | CPT-2 | RB-2 | Exist. | n/a | Glass Front with Sliding Door System |
| Focus     | 3B-FR1 | P-1 | P-1 | P-1 | P-1 | CPT-2 | RB-2 | Exist. | n/a | Glass Front with Sliding Door System |
| Focus     | 3B-FR2 | P-1 | P-1 | P-1 | P-1 | CPT-2 | RB-2 | Exist. | n/a | Glass Front with Sliding Door System |

|           |        |     |     |     |     |       |      |        |     |                                      |
|-----------|--------|-----|-----|-----|-----|-------|------|--------|-----|--------------------------------------|
| Team Room | 3A-3A  | P-1 | P-1 | P-1 | P-1 | CPT-2 | RB-2 | Exist. | n/a | Glass Front with Sliding Door System |
| Team Room | 3B-3B  | P-1 | P-1 | P-1 | P-1 | CPT-2 | RB-2 | Exist. | n/a | Glass Front with Sliding Door System |
| Focus     | 3A-FR3 | P-1 | P-1 | P-1 | P-1 | CPT-2 | RB-2 | Exist. | n/a | Glass Front with Sliding Door System |
| Focus     | 3A-FR4 | P-1 | P-1 | P-1 | P-1 | CPT-2 | RB-2 | Exist. | n/a | Glass Front with Sliding Door System |
| Focus     | 3B-FR3 | P-1 | P-1 | P-1 | P-1 | CPT-2 | RB-2 | Exist. | n/a | Glass Front with Sliding Door System |
| Focus     | 3B-FR4 | P-1 | P-1 | P-1 | P-1 | CPT-2 | RB-2 | Exist. | n/a | Glass Front with Sliding Door System |

### Community Area

|      |       |     |     |     |     |        |        |        |     |                                 |
|------|-------|-----|-----|-----|-----|--------|--------|--------|-----|---------------------------------|
| Conf | 3A-3F | P-1 | P-1 | P-1 | P-1 | Exist. | patch  | Exist. | P-1 | Relocated HM door with Sidelite |
| Conf | 3A-3G | P-1 | P-1 | P-1 | P-1 | Exist. | patch  | Exist. | P-1 | Relocated HM door with Sidelite |
| Conf | 3B-3  | P-4 | P-1 | P-1 | P-1 | Exist. | Exist. | Exist. | P-1 |                                 |

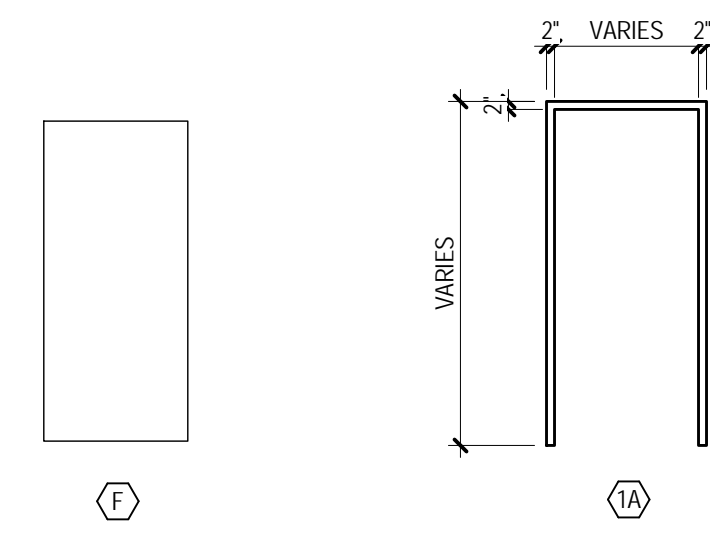
|                   |  |     |     |     |     |        |        |        |     |   |
|-------------------|--|-----|-----|-----|-----|--------|--------|--------|-----|---|
| Open Office Areas |  | P-1 | P-1 | P-1 | P-1 | Exist. | Exist. | Exist. | P-1 | Existing walls and doors to receive P-1 |
|-------------------|--|-----|-----|-----|-----|--------|--------|--------|-----|---|

|               |        |  |  |  |  |        |       |        |  |  |
|---------------|--------|--|--|--|--|--------|-------|--------|--|--|
| Printer Kiosk | 3A-32B |  |  |  |  | Exist. | patch | Exist. |  |  |
|---------------|--------|--|--|--|--|--------|-------|--------|--|--|

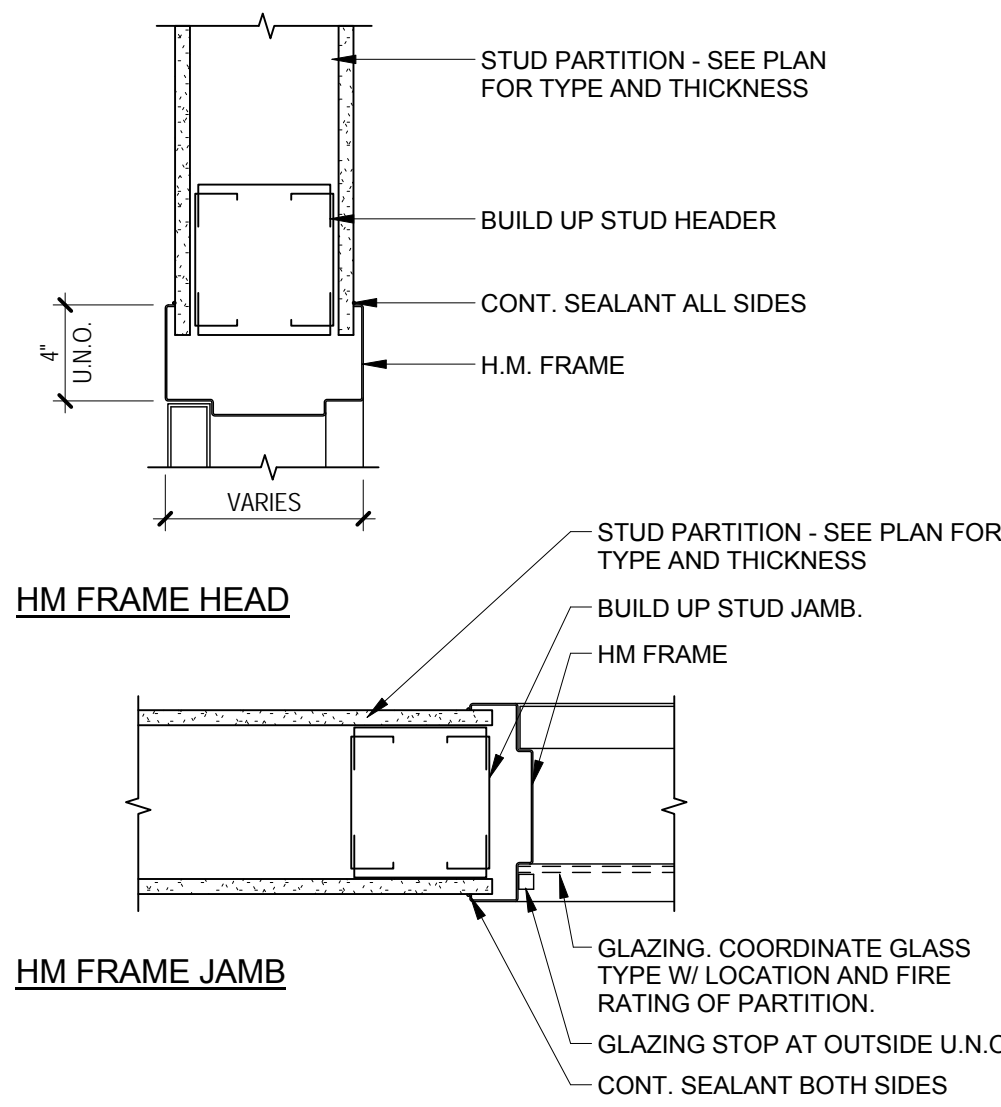
Note: WB locations shown on Plan

### General Items

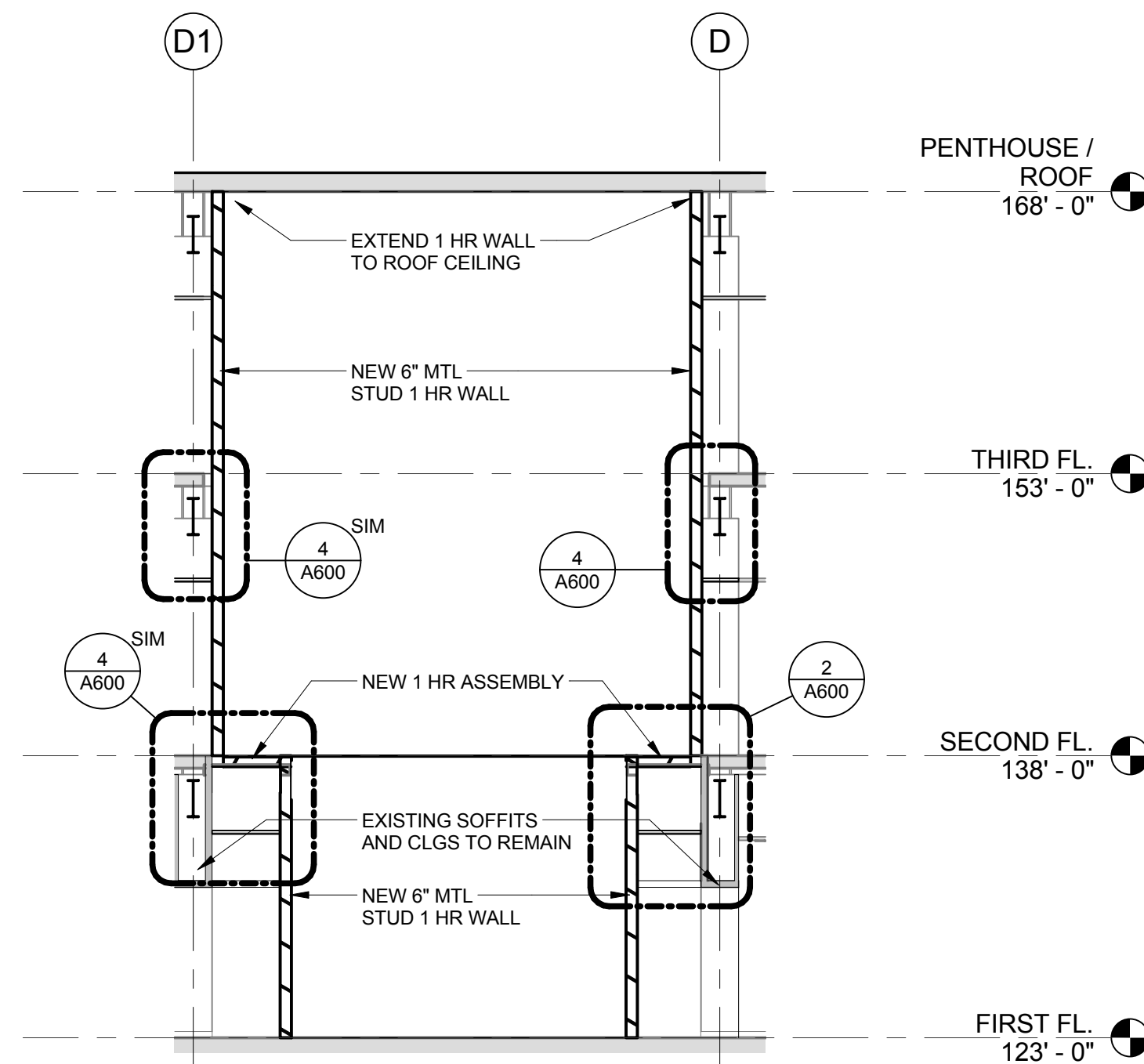
- P-1 Creamy SW
- P-2 Liquid Blue
- P-3 Nautilus
- P-4 Lively Yellow
- P-5 Butterfield
- P-6 Neutral Ground
- P-7
- WB White Board Paint - Idea Paint "gloss" White
- CPT-1 Existing Carpet
- CPT-2 Owner Provided Carpet
- RB-1 Existing
- RB-2 Owner Provided Black Base
- RB-3 6" Base



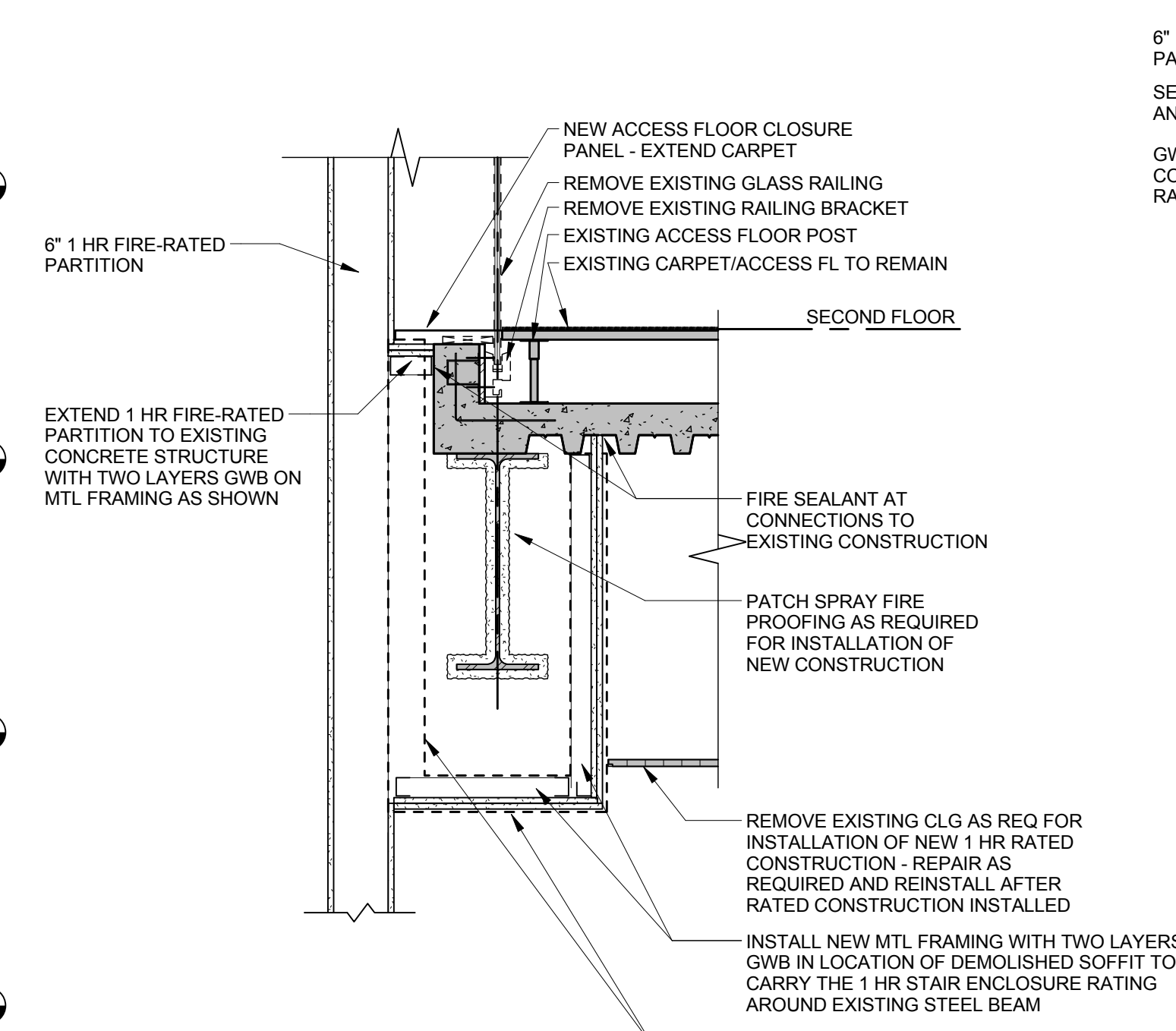
DOOR TYPE: FRAME TYPE:



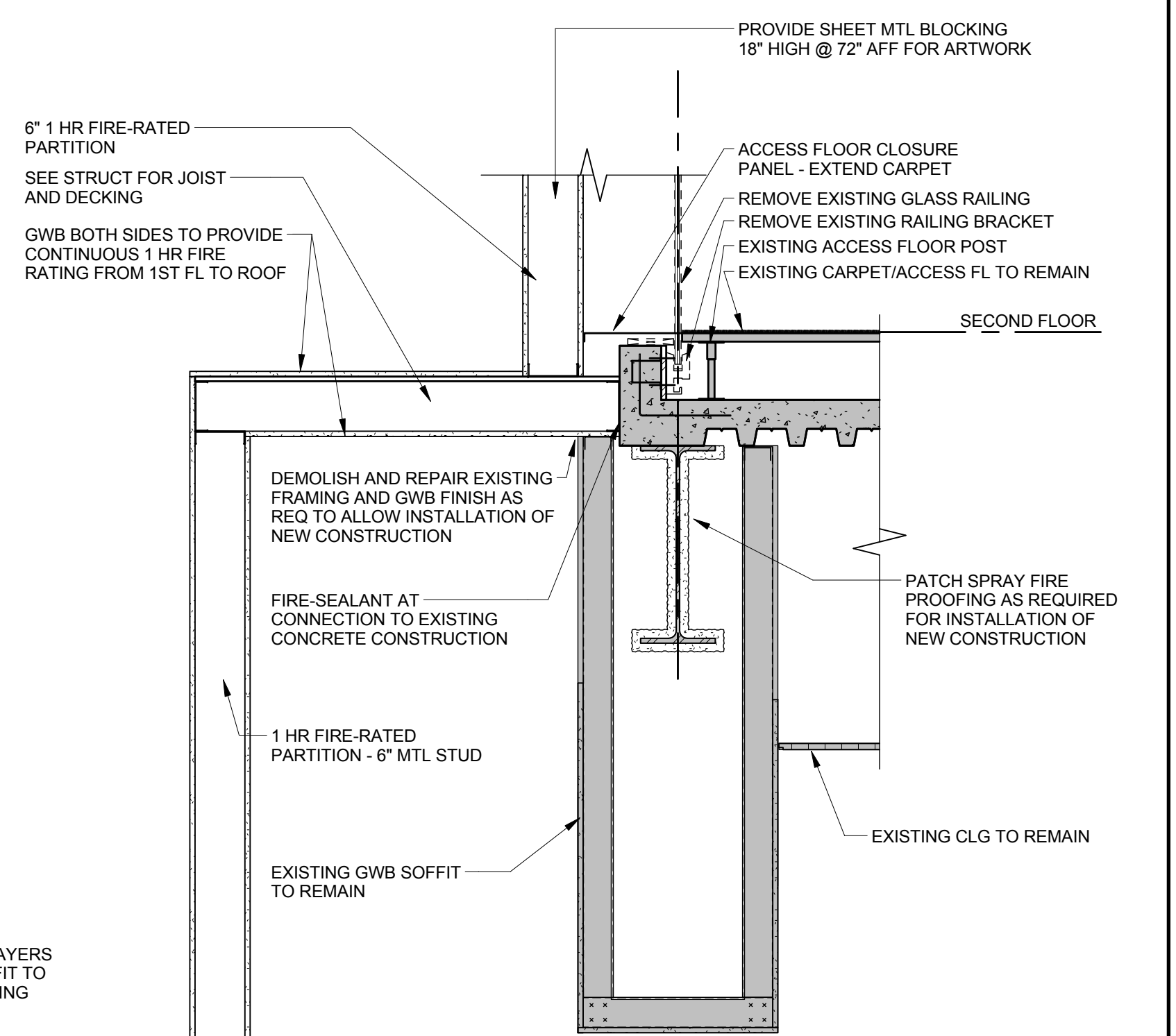
HM FRAME DETAILS @ GWB  
1 1/2" = 1'-0"



Section 1  
1/8" = 1'-0"



Floor 3 Opening Detail  
3/4" = 1'-0"



Floor 2 Opening Detail  
3/4" = 1'-0"

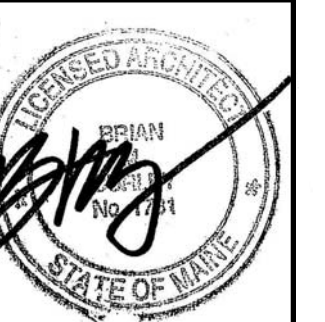


Allied Project No: 14072  
CAD file: 14072M.DWG

COPYRIGHT 2016  
PDT Architects  
Reuse or reproduction of the contents of this document is not permitted without written permission of PDT Architects.

2016 UNUM - HO1 3RD FLOOR FIT UP (NORTH WING)  
2211 CONGRESS STREET, PORTLAND, MAINE 04112

| No.               | Date | Description |
|-------------------|------|-------------|
| Revision Schedule |      |             |



JOB NO. 14-074

DRWN: SMD  
CHK: CDR

SCALE: As indicated

ISSUE: 12 FEB 2016  
PERMIT SET

TITLE: SECTION, DETAILS AND SCHEDULES

SHEET:

A600