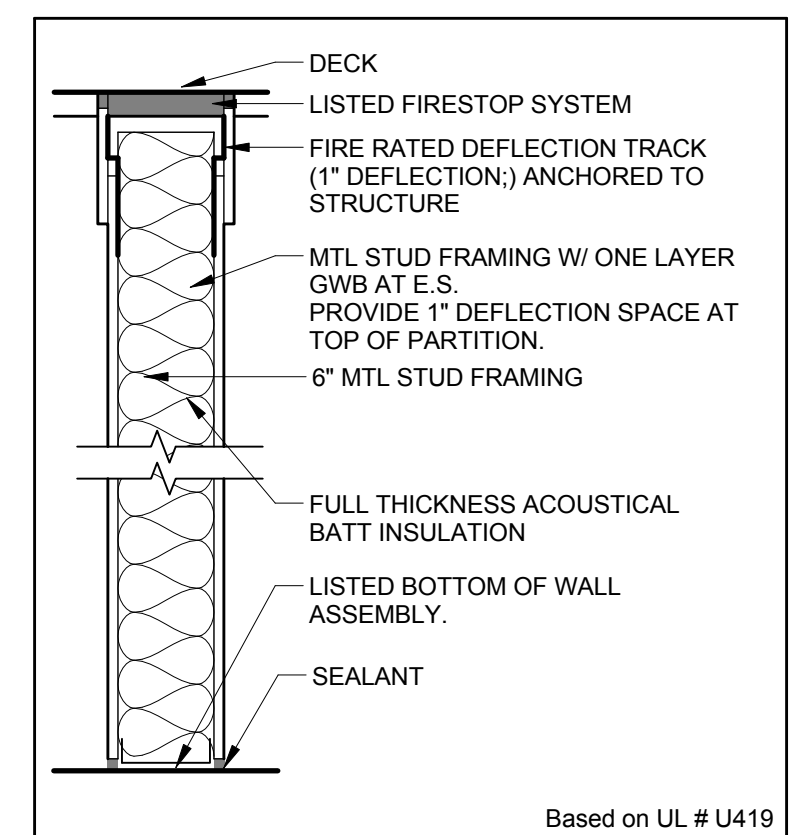
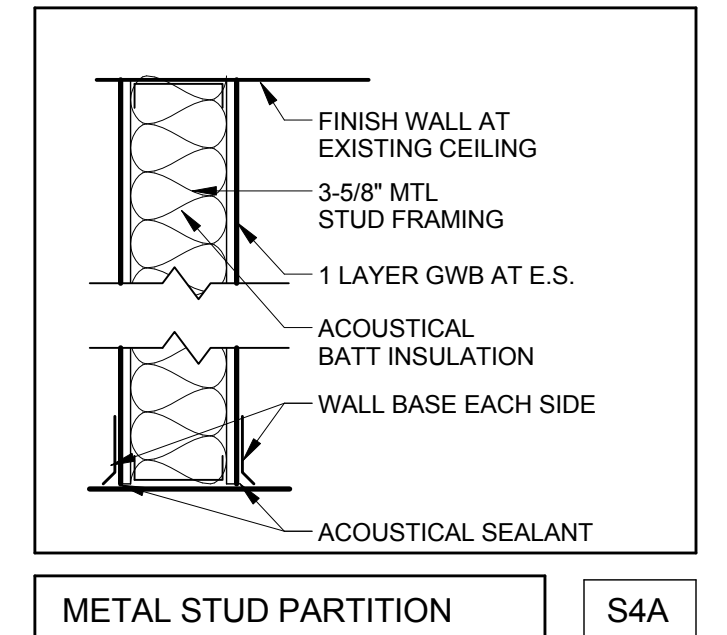


GRAPHIC LEGEND

- EXISTING WALLS TO REMAIN
- - - - WALLS TO BE DEMOLISHED
- ▬ NEW WALLS
- ⊕ EXISTING ADA/POWER ASSIST
- ⊕ EXISTING FIRE EXTINGUISHER
- ⊕ EXISTING FIRE EXTINGUISHER WITH CABINET
- ⊕ FIRE EXTINGUISHER
- ⊕ FIRE EXTINGUISHER WITH CABINET
- ⊕ ADA/POWER ASSIST
- ⊕ INSTALL RATED FLOOR BOX
- ⊕ FLOOR DRAIN
- ▨ AREA NOT IN SCOPE OF WORK
- # KEYNOTE

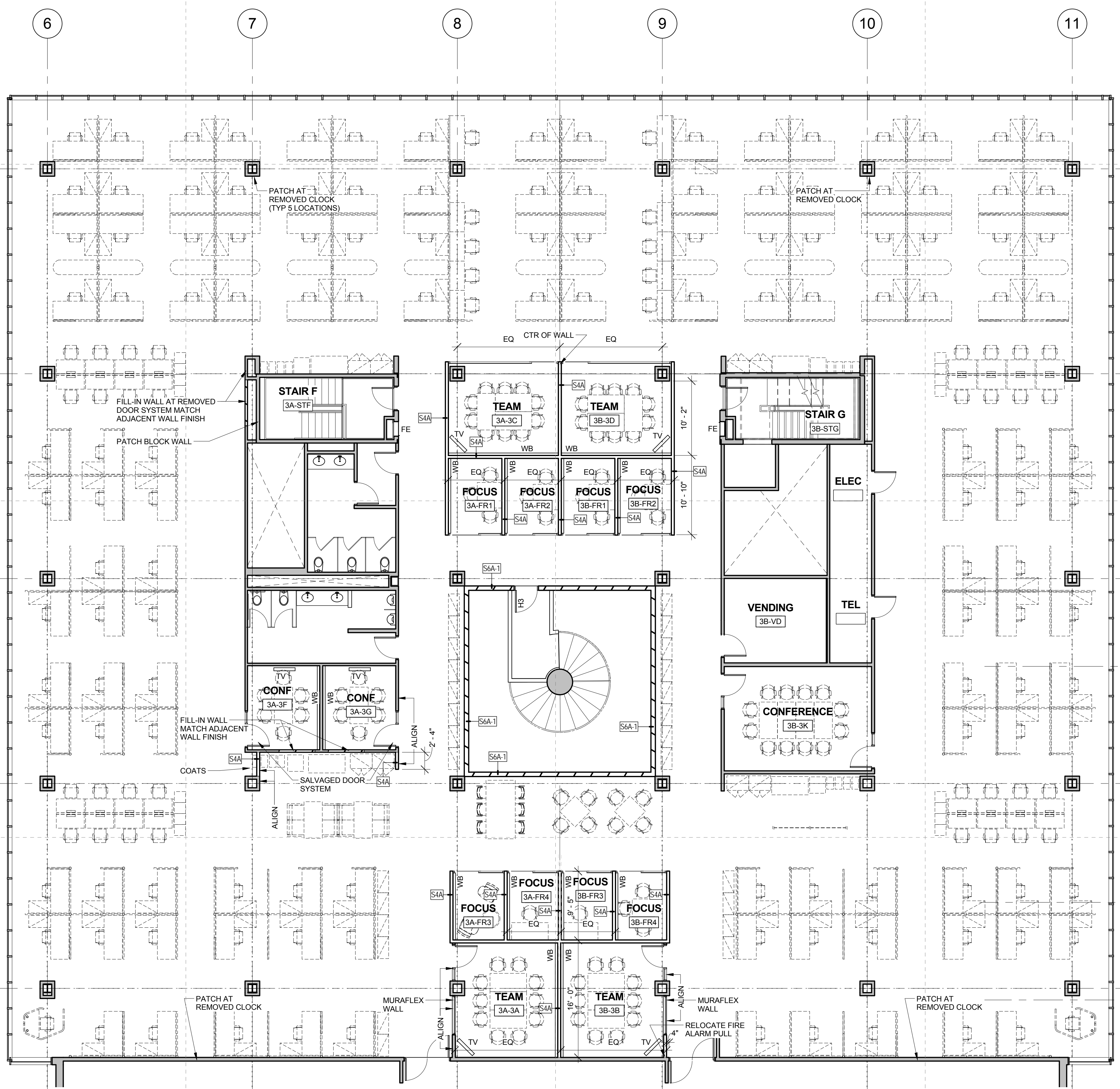


GENERAL PLAN NOTES:

- PATCH AND REPAIR ALL EXISTING WALLS, FLOORS, CEILINGS, AND FINISHES AFFECTED OR DAMAGED BY TEMPORARY PARTITION REMOVAL. NOT ALL AREAS HAVE BEEN INDICATED ON PLAN. SEE TEMPORARY PARTITION LAYOUTS FOR AREAS OF IMPACT.
- SEE CODE PLANS FOR LOCATIONS OF RATED WALLS AND ENSURE ALL EXISTING WALLS IN THOSE LOCATIONS EXTEND TO DECK AND ALL PENETRATIONS ARE PROPERLY FIRESTOPPED.
- SOME OF THE NEW WORK MAY BE AFFECTED BY PREVIOUS ABATEMENT WORK. CONFIRM ANY DISCREPANCIES WITH ARCHITECT PRIOR TO PROCEEDING WITH WORK.
- WALL INFILLS MARKED WITH WALL TYPE. IF INDICATED TYPE DOES NOT MATCH EXISTING THICKNESS, MODIFY TO MATCH. SEE A500 FOR WALL INFILL DETAILS.

PLAN GENERAL NOTES

- Work from given dimensions. In general, large-scale details take precedence over smaller scale plans, elevations and building sections. Notify the Architect of any dimensional discrepancies prior to commencing the Work, and do not begin work until such discrepancies are resolved by the Architect.
- Do not scale the drawings.
- Dimensions indicated as "clear" shall be maintained in cases of discrepancy.
- Unless noted otherwise, the location of door frames shall be:
 • CMU partitions: 4" from the adjacent wall to the hinge side of the rough opening.
 • Metal stud partitions: 4" from the adjacent wall studs to the hinge side of the rough opening.
- Masonry Opening or Rough Opening dimensions indicated are nominal dimensions and may not match the actual dimensions of the product. Coordinate all Masonry Openings and Rough Openings with the actual window unit, doorframe, curtain wall/storefront, or lower sizes and requirements.
- Dimensional Control:**
 • Exterior dimensions are to:
 - Centerline of column
 - Face of masonry
 - Face of stud
 - Face of concrete
 - Centerline of window opening
 - Rough opening
 - Masonry opening
 • Interior dimensions are to:
 - Centerline of column
 - Face of masonry
 - Face of stud
 - Face of existing finish material
 • Existing dimensions shall be verified. Report any discrepancies to the Architect.
- Review narrative for typical power and data locations



1 THIRD FLOOR PLAN
1/8" = 1'-0"

