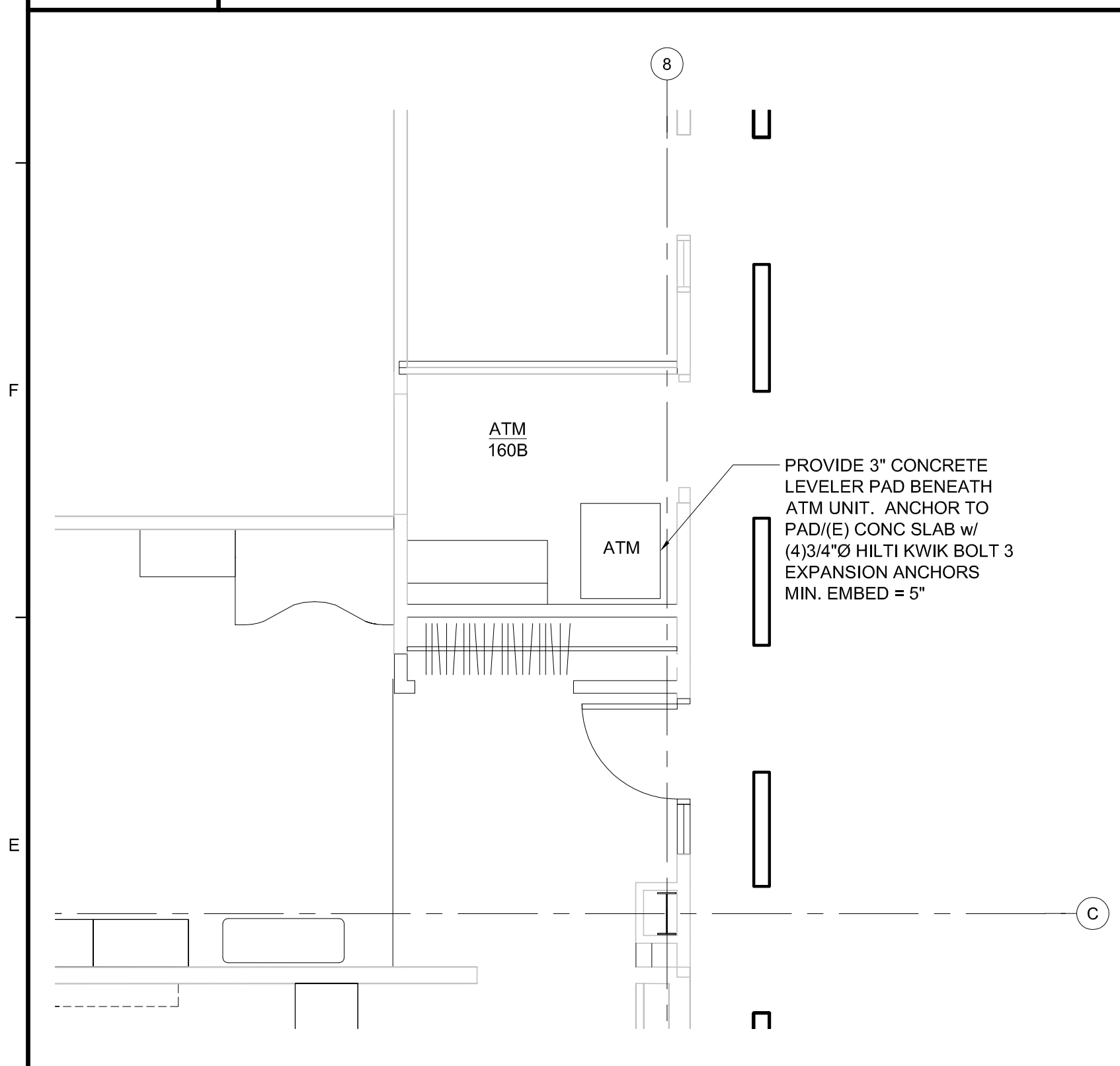
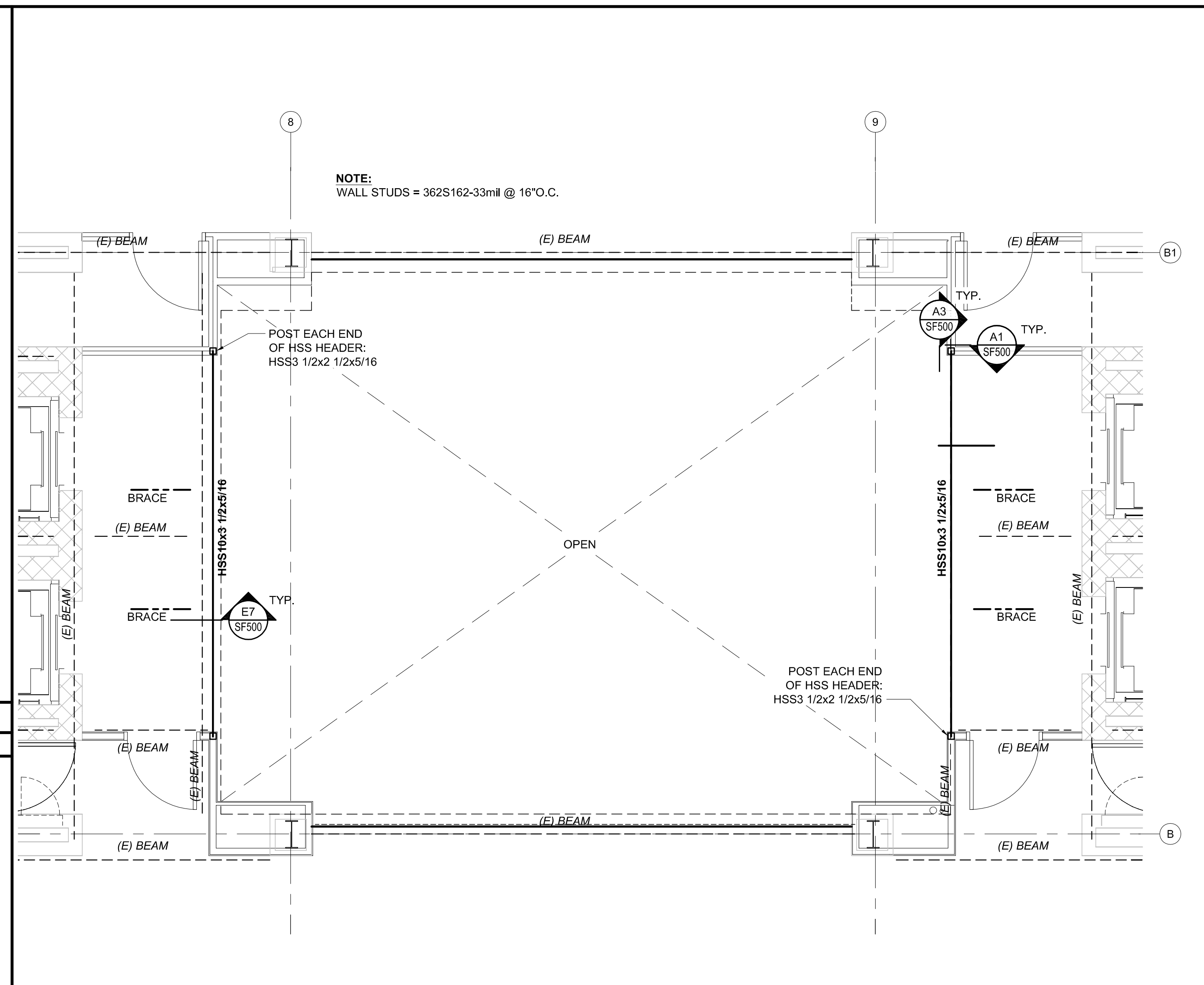


G1 STRUCTURAL ~ ROOF FRAMING PART PLAN
1/8" = 1'-0"

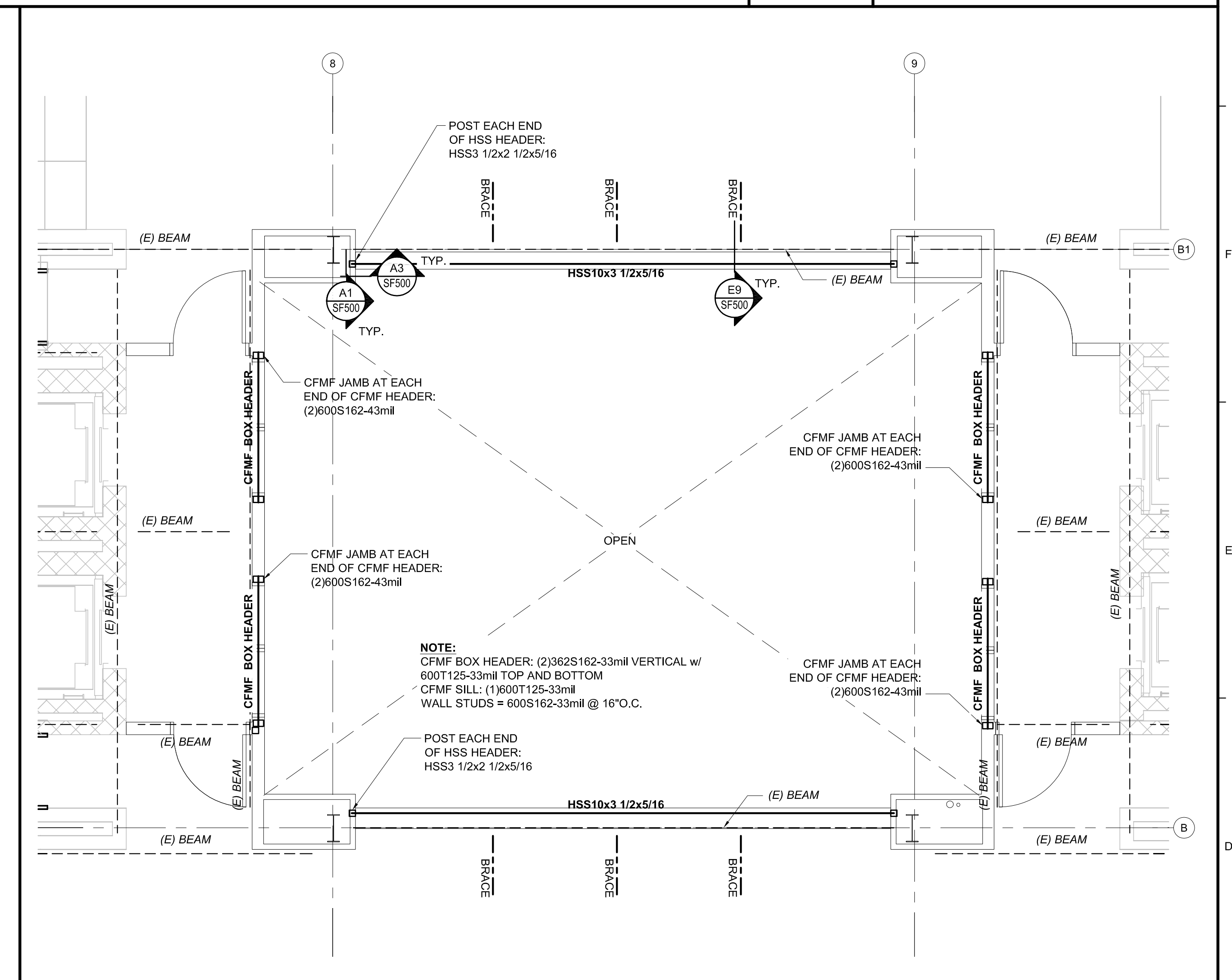
G9 KEYPLAN
NOT TO SCALE



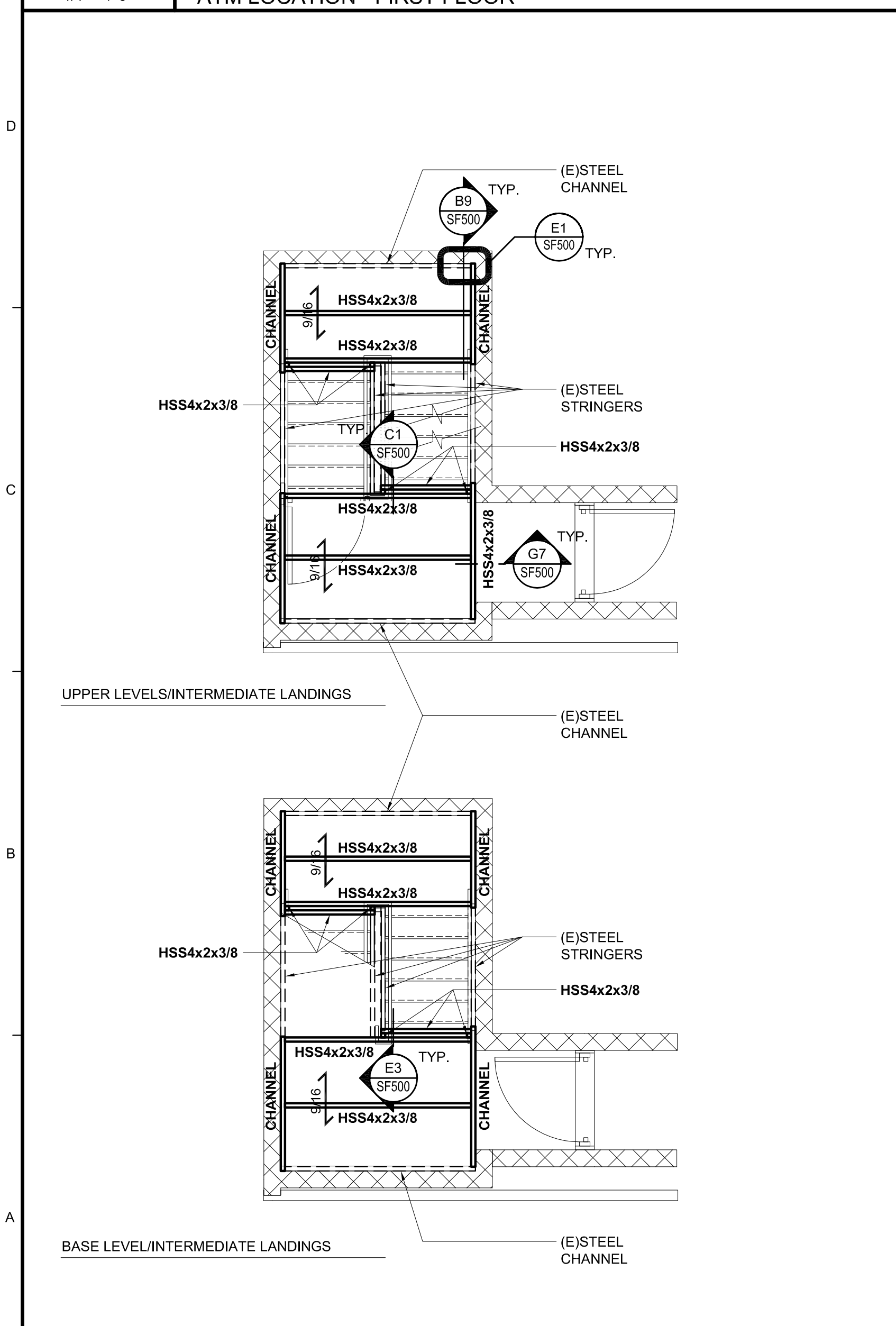
E1 STRUCTURAL PARTIAL PLAN ~ BUILDING HO1
1/4" = 1'-0"
ATM LOCATION - FIRST FLOOR



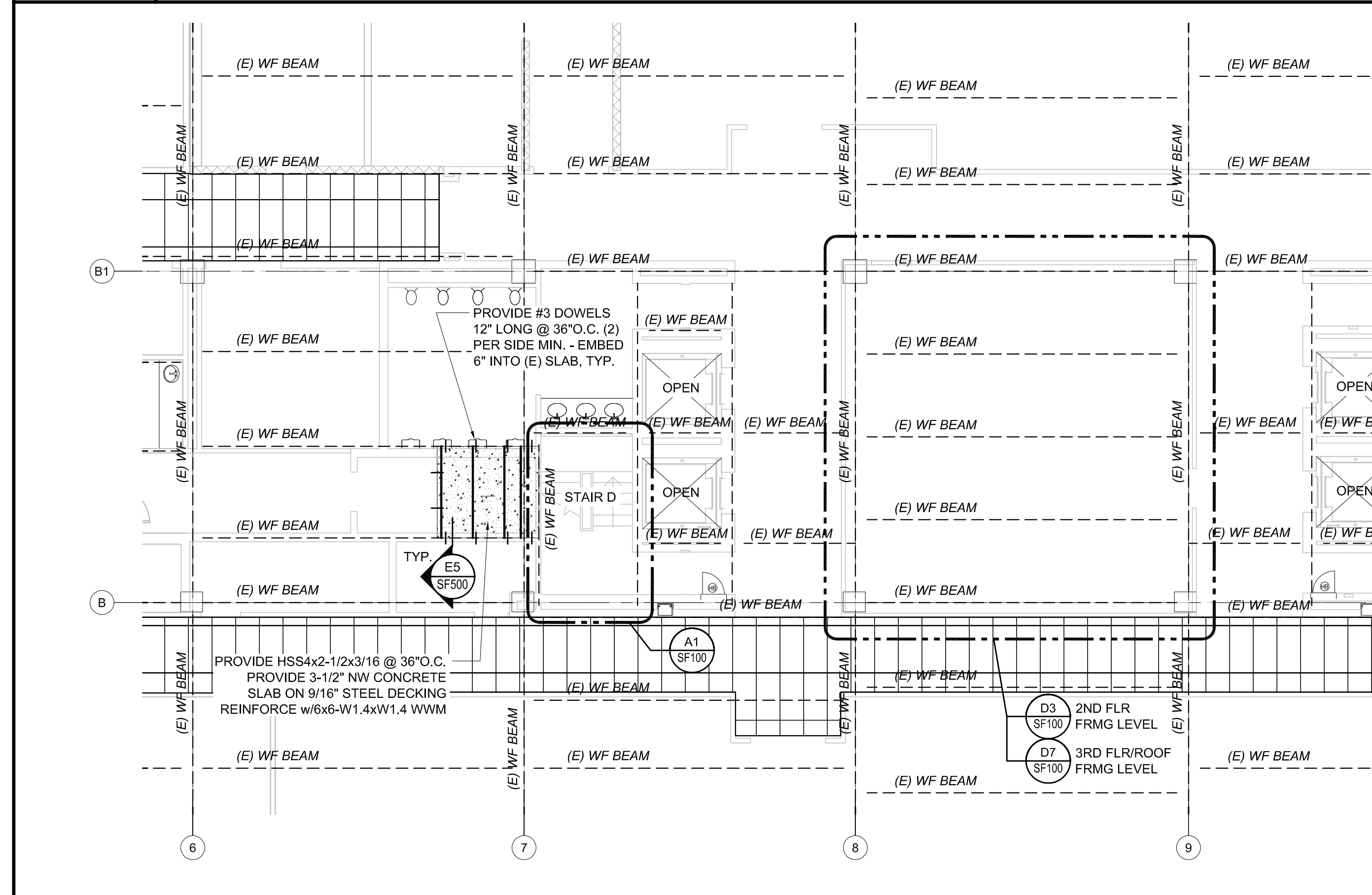
D3 STRUCTURAL PARTIAL PLAN ~ BUILDING HO1 - ELEVATOR LOBBY
1/4" = 1'-0"
SECOND FLOOR FRAMING LEVEL



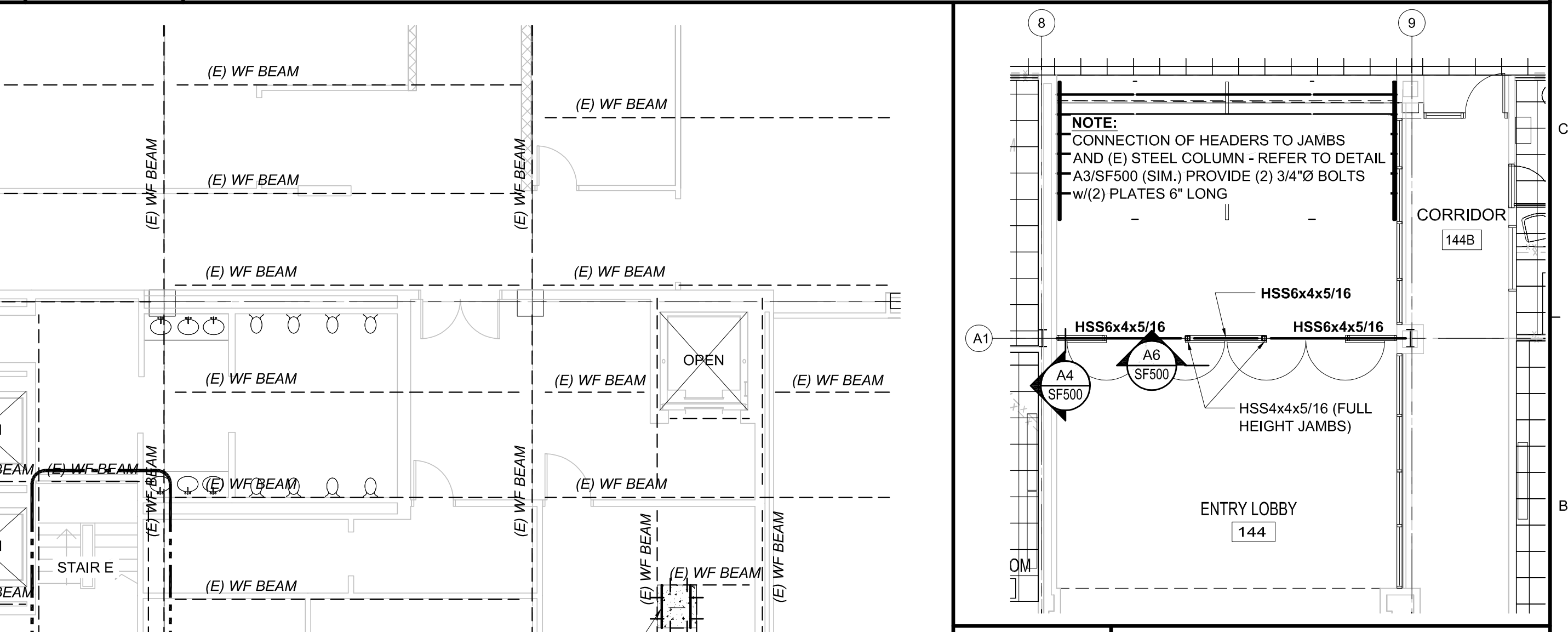
D7 STRUCTURAL PARTIAL PLAN ~ BUILDING HO1 - ELEVATOR LOBBY
1/4" = 1'-0"
THIRD FLOOR AND ROOF FRAMING LEVEL



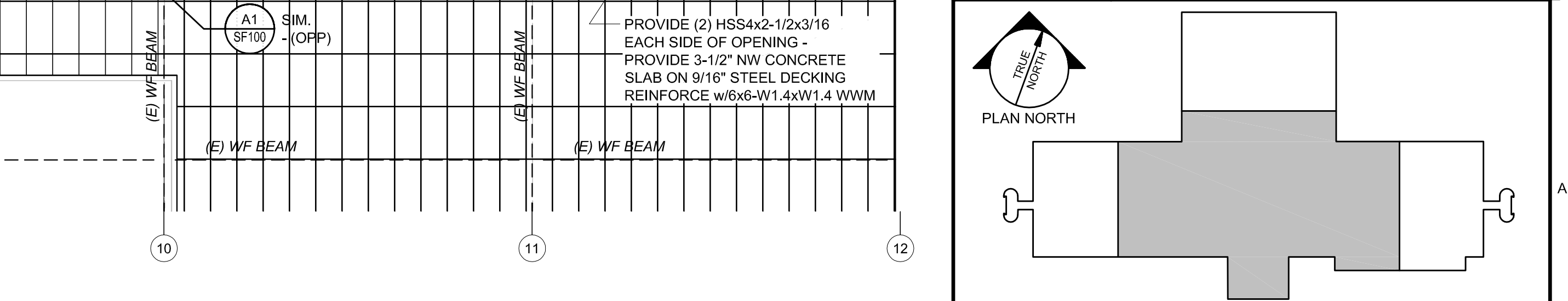
A1 STRUCTURAL PARTIAL PLAN ~ BUILDING HO1
1/4" = 1'-0"
STAIRS D (SHOWN) AND E (OPP-SIM)



A3 STRUCTURAL PARTIAL PLAN ~ BUILDING HO1 - FIRST FLOOR FRAMING LEVEL
1/8" = 1'-0"



B9 STRUCTURAL PARTIAL PLAN ~ SECOND FLOOR FRAMING LEVEL
1/8" = 1'-0"



A9 FIRST FLOOR KEY PLAN
NOT TO SCALE

PDT ARCHITECTS
49 DARTMOUTH STREET
PORTLAND, MAINE 04101
207-775-1059
www.pdtarch.com

Allied Engineering
Structural Mechanical
Electrical Commissioning

160 Veranda Street
Portland, Maine 04103
T: 207.221.2260
F: 207.221.2266
Web: www.allied-eng.com

allied Project No: 14005
CAD File: 14005S.dwg

COPYRIGHT 2014 PDT Architects
Reuse or reproduction of the contents of this document is not permitted without written permission of PDT Architects.

2014 UNUM - HO1 Interior Renovations
PORTLAND, MAINE

STATE OF MAINE
WILLIAM FAUCHER
No. 7135
LICENSED PROFESSIONAL ENGINEER

PDT JOB NO. 13-096
DRAWN PED
SCALE AS NOTED

ISSUE: 2 Oct 2014
PERMIT SET

TITLE
STRUCTURAL - FRAMING PLANS

SHEET
SF100

M:\Projects\2014\14005 - Unum HO1 2014 Interior Renovations\02 Drawing Files\14005S.dwg Oct 02, 2014 - 6:31pm