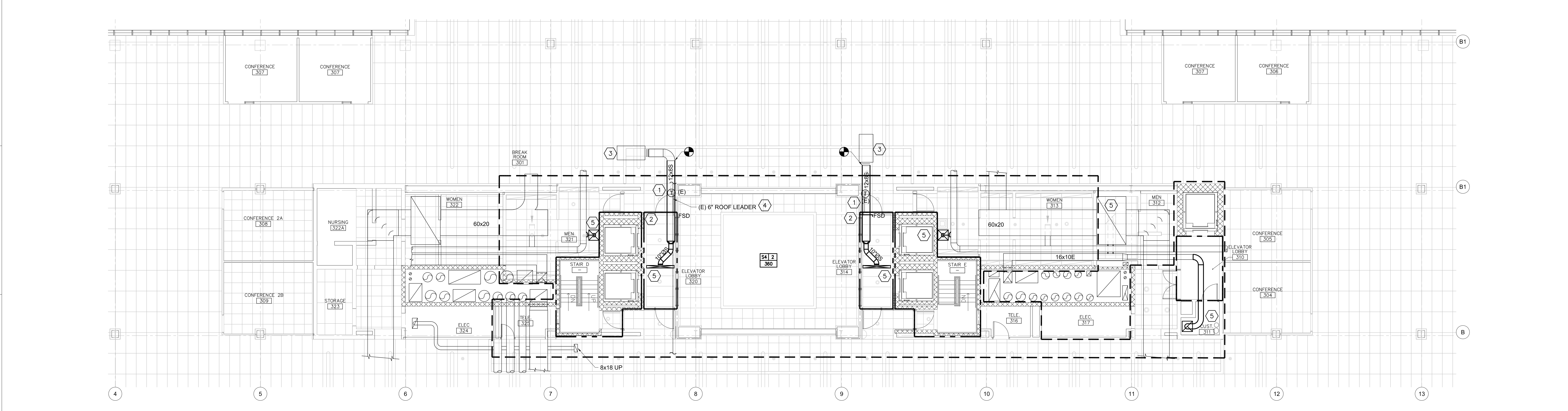
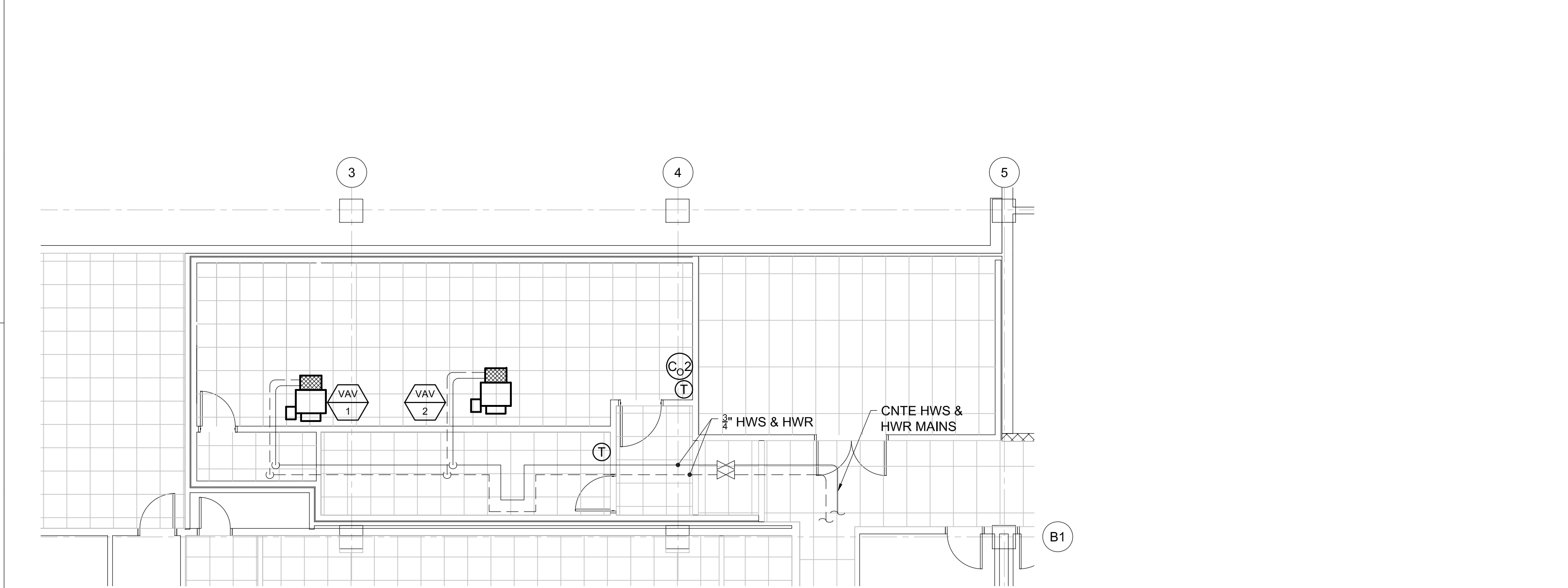


F1 MECHANICAL PART PLAN ~ SECOND FLOOR
 1/8" = 1'-0"



C1 MECHANICAL PART PLAN ~ THIRD FLOOR
 1/8" = 1'-0"



A1 MECHANICAL PART PLAN ~ BASEMENT PIPING
 1/8" = 1'-0"

NOTES:

1. REPLACE SUPPLY DUCT INSULATION WITHIN WORK BOUNDARY.
2. SEE SECTION 012100 "ALLOWANCES". FOR ADDITIONAL INSULATION REPAIR, REPLACING DAMAGED DUCTWORK, AND HVAC DEMOLITION / RELOCATIONS.

LEGEND:

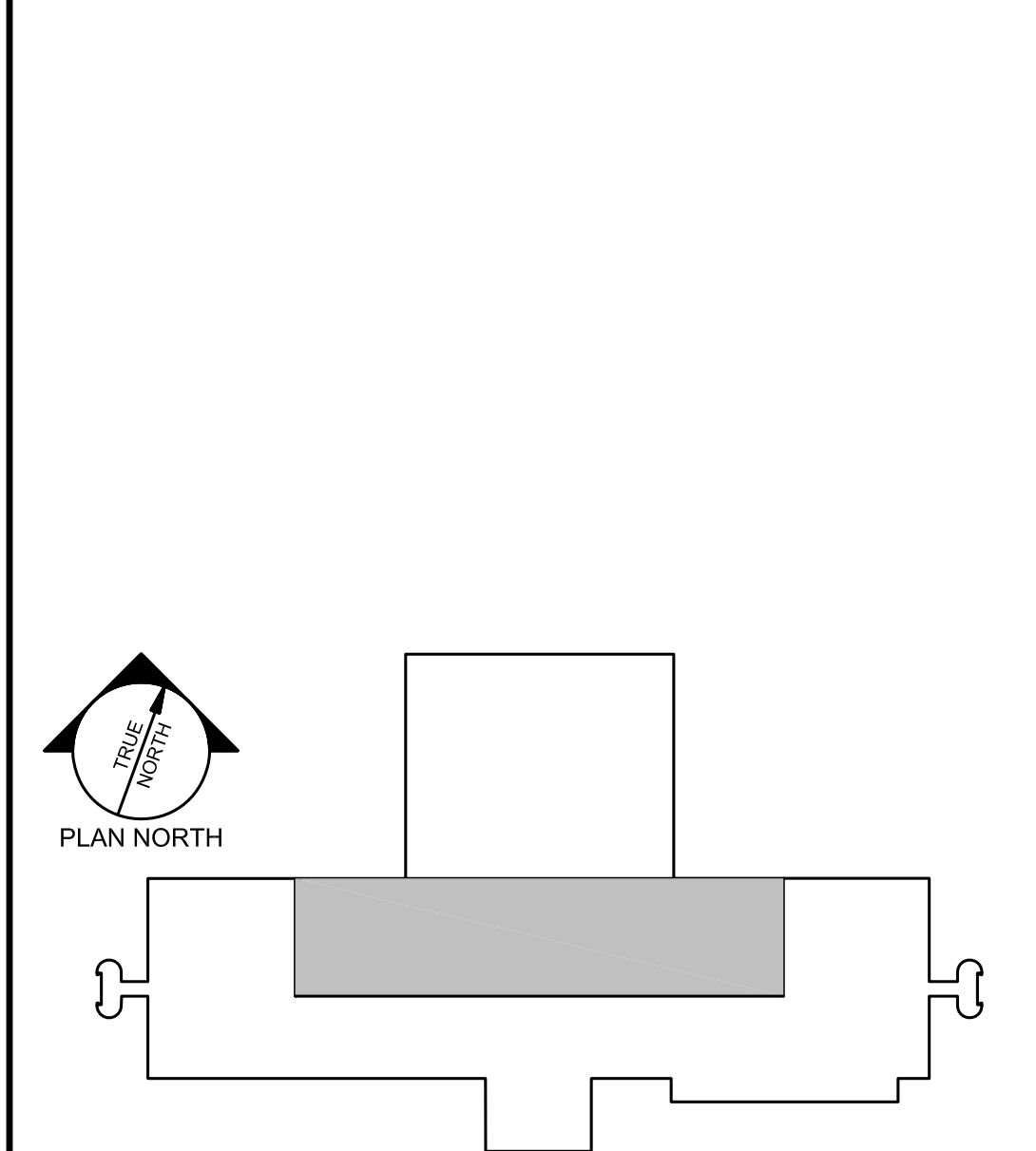
- ONE HOUR FIRE/SMOKE RATED PARTITION
- ONE HOUR FIRE RATED PARTITION
- TWO HOUR FIRE RATED PARTITION
- BOUNDARY OF ASBESTOS ABATEMENT

A5 NOTES & LEGEND
 NOT TO SCALE

KEYED NOTES:

- 1 RELOCATE (E) TEMPERATURE SENSOR
- 2 PROVIDE FIRE/SMOKE DAMPER
- 3 (E) DUAL DUCT TERMINAL UNIT TO REMAIN
- 4 RE-INSULATE (E) PIPES
- 5 RE-INSTALL DIFFUSERS AND PROVIDE HARD DUCT (NOT FLEX) RUN-OUTS BACK TO MAIN DUCT. (CONFIRM EXISTING DUCT SIZE) PROPORTIONATELY RE-BALANCE AIRFLOW AT EACH DIFFUSER.
- 6 PROVIDE FIRE DAMPER
- 7 PROVIDE A 24x18 (+/- CONFIRM LOCATION & AVAILABLE SPACE) TRANSFER DUCT WITH FIRE DAMPER
- 8 PROVIDE A 18x12 (+/- CONFIRM LOCATION & AVAILABLE SPACE) TRANSFER DUCT WITH FIRE DAMPER

A7 SECOND/THIRD FLOOR KEY PLAN
 NOT TO SCALE



A9 SECOND/THIRD FLOOR KEY PLAN
 NOT TO SCALE

N:\Projects\2014\14005 - Unum HO1 2014 Interior Renovations\00 Drawing Files\14005M.dwg Oct 08, 2014 - 10:13am