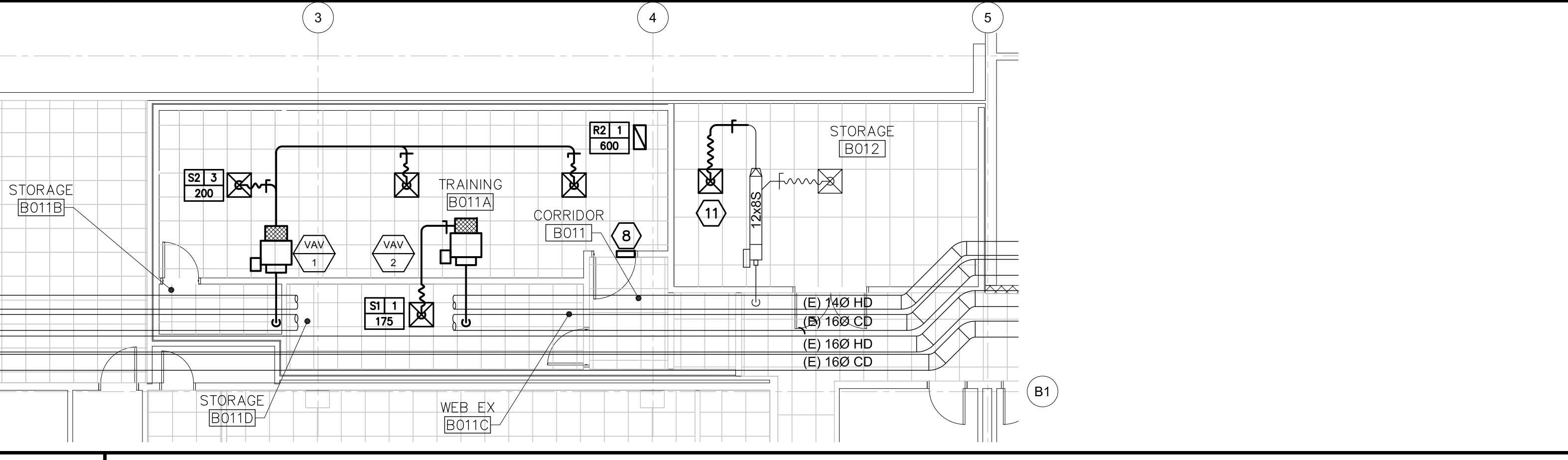


B1 MECHANICAL PART PLAN ~ FIRST FLOOR
 1/8" = 1'-0"



A1 MECHANICAL PART PLAN ~ BASEMENT HVAC
 1/8" = 1'-0" SEE DEDUCT ALT. #1

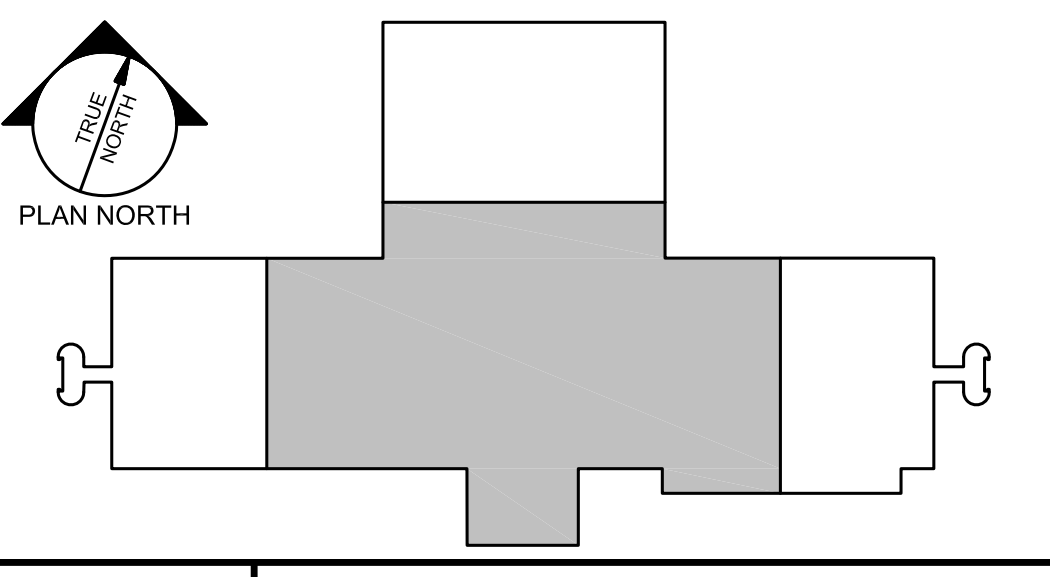
NOTES:
 1. REPLACE SUPPLY DUCT INSULATION WITHIN WORK BOUNDARY.
 2. SEE SECTION 012100 "ALLOWANCES", FOR ADDITIONAL INSULATION REPAIR, REPLACING DAMAGED DUCTWORK, AND HVAC DEMOLITION / RELOCATIONS.

LEGEND:
 - - - - - ONE HOUR FIRE/SMOKE RATED PARTITION
 - - - - - ONE HOUR FIRE RATED PARTITION
 - - - - - TWO HOUR FIRE RATED PARTITION
 - - - - - BOUNDARY OF ASBESTOS ABATEMENT

A5 NOTES & LEGEND
 NOT TO SCALE

- KEYED NOTES:**
- RELOCATE (E) TEMPERATURE SENSOR
 - PROVIDE FIRE/SMOKE DAMPER
 - (E) DUAL DUCT TERMINAL UNIT TO REMAIN
 - RE-INSULATE (E) PIPES
 - RE-INSTALL DIFFUSERS AND PROVIDE HARD DUCT (NOT FLEX) RUN-OUTS BACK TO MAIN DUCT. (CONFIRM EXISTING DUCT SIZE) PROPORTIONATELY RE-BALANCE AIRFLOW AT EACH DIFFUSER.
 - PROVIDE FIRE DAMPER
 - PROVIDE A 24x18 (+/-) CONFIRM LOCATION & AVAILABLE SPACE) TRANSFER DUCT WITH FIRE DAMPER
 - PROVIDE A 18x12 (+/-) CONFIRM LOCATION & AVAILABLE SPACE) TRANSFER DUCT WITH FIRE DAMPER
 - PROVIDE A NEW 6" BRANCH DUCT, VD & DIFFUSER
 - RELOCATE EXISTING RETURN GRILLE
 - RELOCATE EXISTING SUPPLY DIFFUSER

A7 MECHANICAL KEYED NOTES
 NOT TO SCALE



A9 FIRST FLOOR KEY PLAN
 NOT TO SCALE

N:\Projects\2014\14005 - Unum HO1 2014 Interior Renovations\02 Drawing Files\14005M.dwg Oct 08, 2014 - 10:13am