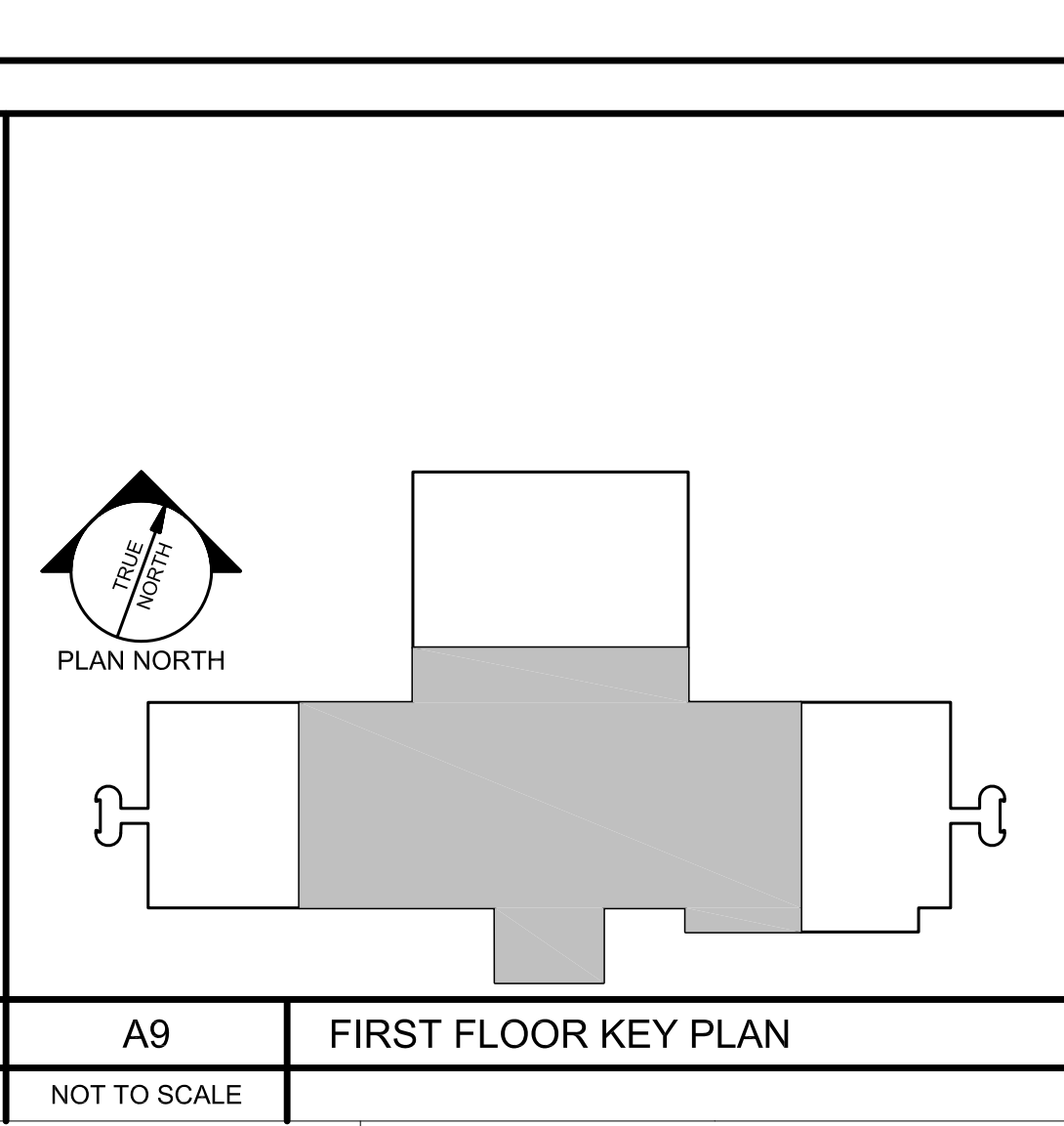


KEYED NOTES:

- ① SPRINKLER MAIN UP IN CHASE, SEE A1/F100
- ② FLOOR CONTROL VALVE
- ③ CAP SPRINKLER MAIN FOR FUTURE PHASE
- ④ PROVIDE CAPPED TEE FOR FUTURE DRY SYSTEM TIE-IN TO SERVE EXTERIOR CANOPY.



N:\Projects\2014\14005 - Unum HO1 2014 Interior Renovations\03 Drawing Files\14005.dwg Oct 08, 2014 - 10:03am