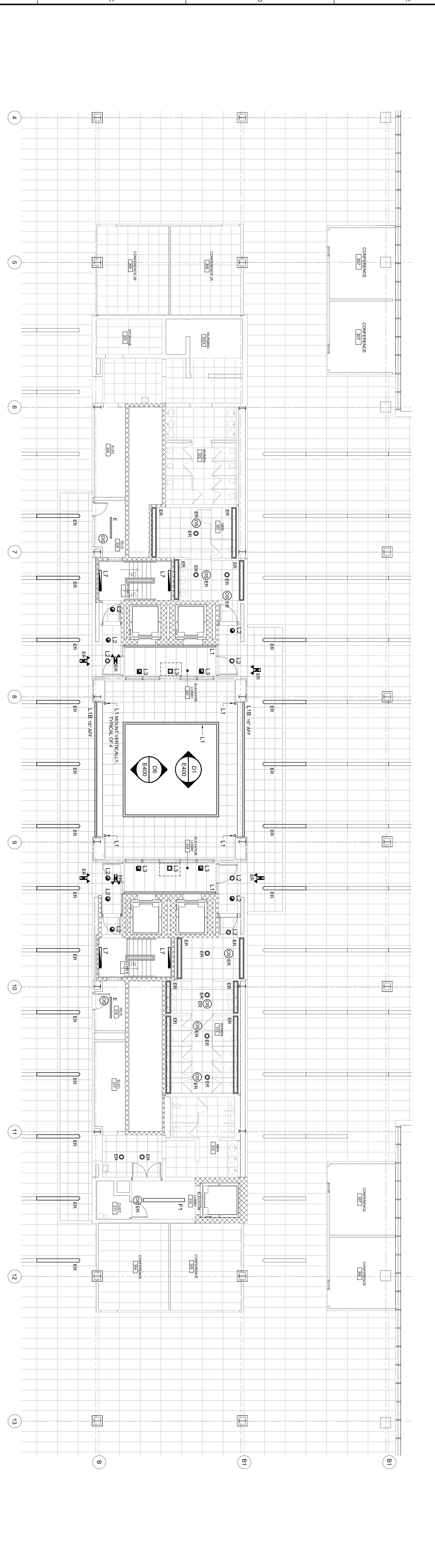
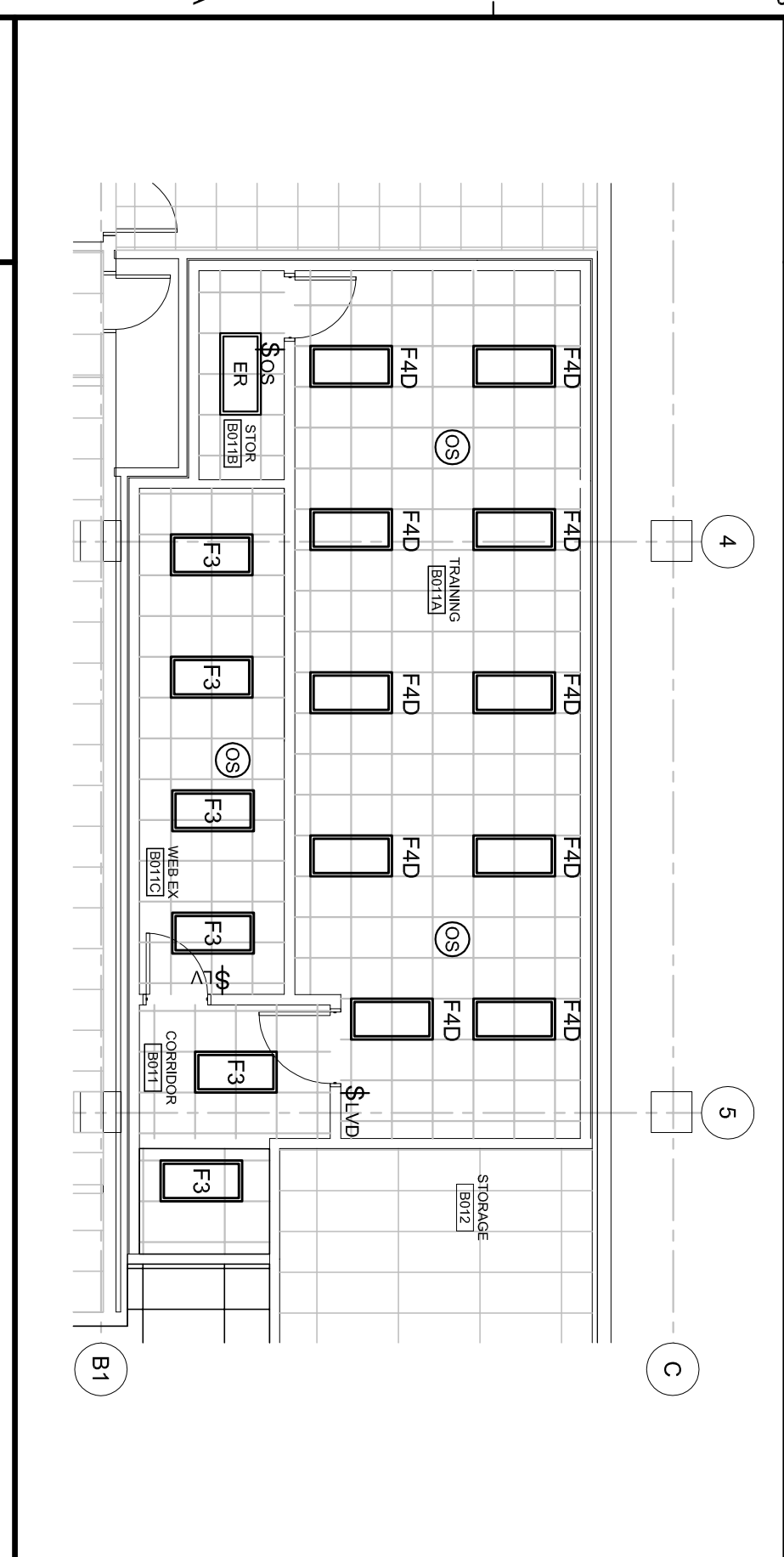


F1 LIGHTING PART PLAN - SECOND FLOOR



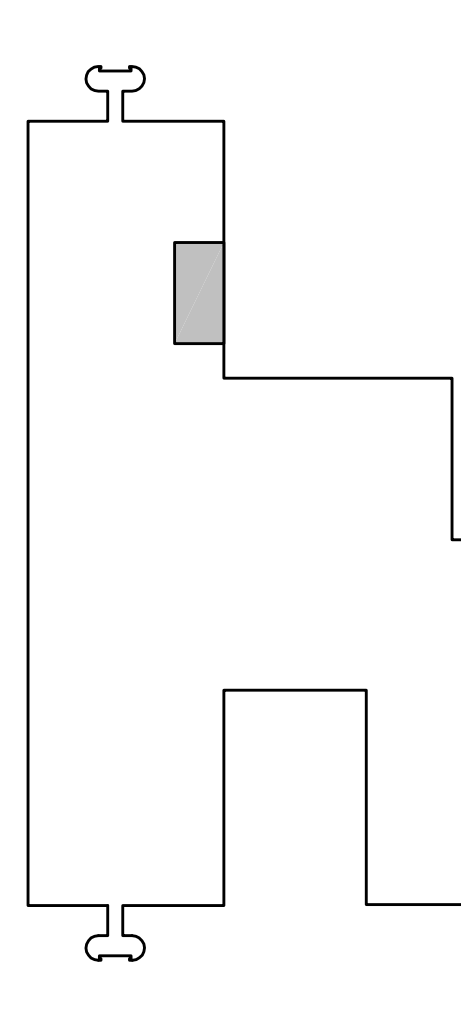
B1 LIGHTING PART PLAN - THIRD FLOOR



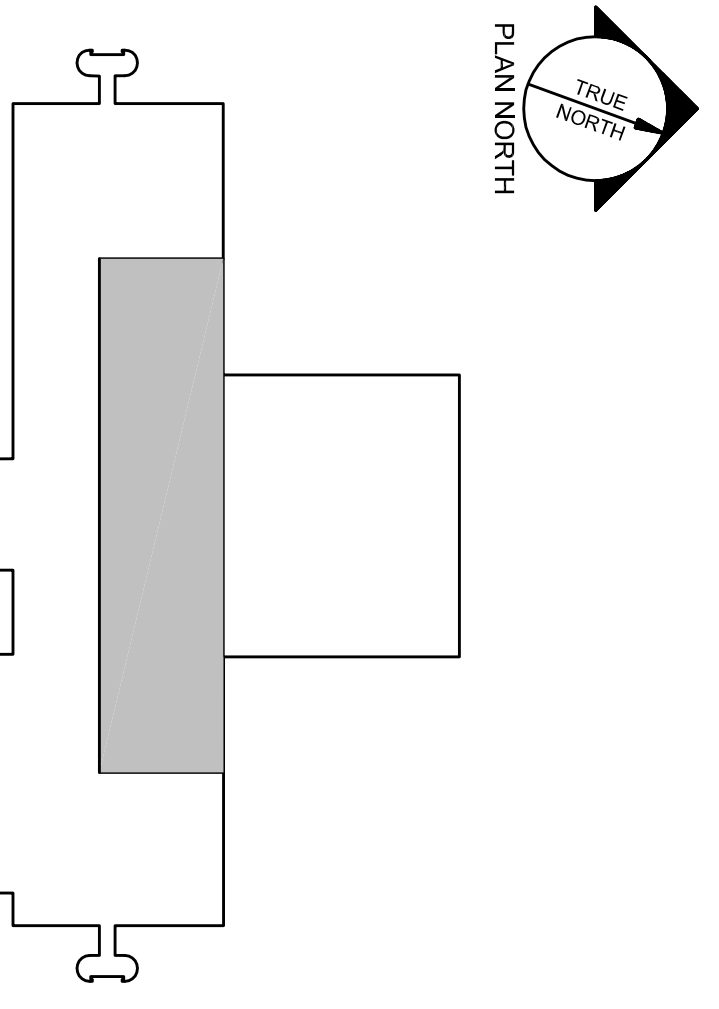
A1 LIGHTING PART PLAN - BASEMENT

1. EXISTING CIRCUITS AND SWITCHING SHALL BE REUSED UNO.
2. FIXTURES SHALL BE CLEANED AND RELAMPED PRIOR TO REINSTALLATION.

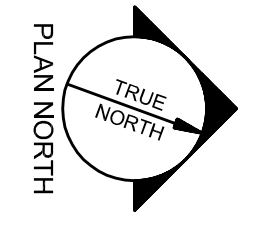
A8 GENERAL NOTES



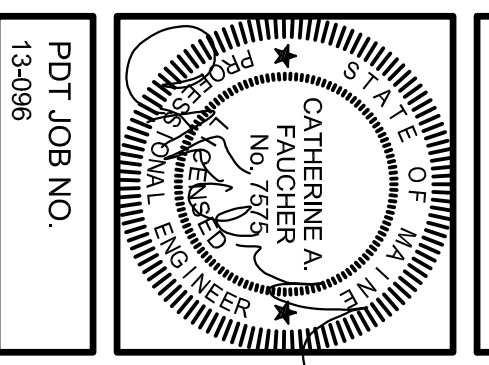
A8 BASEMENT KEY PLAN



A9 SECOND/THIRD FLOOR KEY PLAN



EL101
 SHEET
 LIGHTING PART PLAN - SECOND FLOOR & BASEMENT
 ISSUE 2 OCT 2014
 PERMIT SET
 SCALE AS NOTED
 DRAWN D.L.
 PLOT JOB NO. 134096



2014 UNUM - HO1 Interior Renovations

PORTLAND, MAINE

P D T
ARCHITECTS
 48 BARKINGHAM STREET
 PORTLAND, MAINE 04101
 207-775-1950
 www.pdtarch.com

Allied Engineering
 Electrical/Mechanical
 160 Verneda Street
 Portland, Maine 04103
 E: 207.231.2300
 F: 207.231.2300
 Web: www.allied-eng.com

Allied Project No: 14005
 CAD FILE: 14005E.dwg
 COPYRIGHT 2014
 P.D.T. Architects
 Made as a reproduction of the original drawing within the permission of P.D.T. Architects