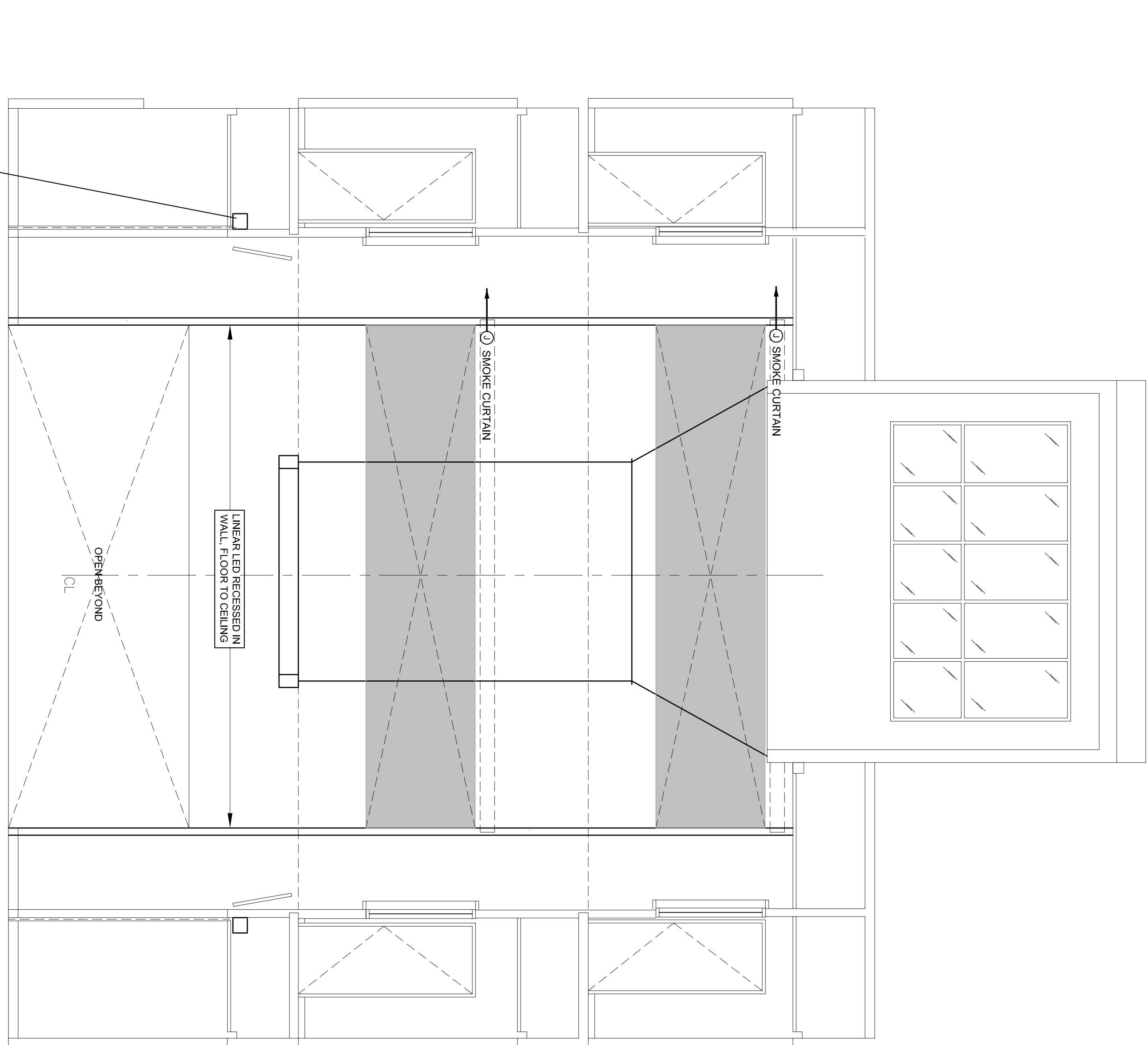


NOTE:
LIGHT FIXTURES AND SMOKE CURTAINS SHALL BE MIRRORRED ON THE SOUTH ELEVATION



NOTE:
THERE ARE A TOTAL OF 6 SMOKE CURTAINS. THE WEST ELEVATION MIRRORS THE ELEVATION SHOWN

D1 NORTH ELEVATION OF LIGHT SHAFT (SOUTH SIMILAR)

D6 EAST ELEVATION OF LIGHT SHAFT (WEST SIMILAR)

LUMINAIRE SCHEDULE

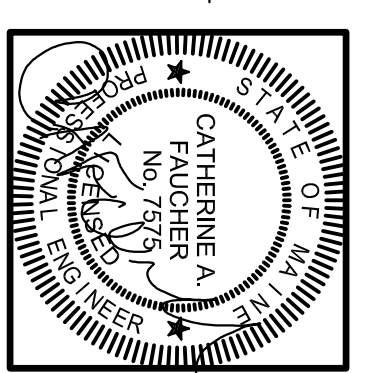
TYPE	DESCRIPTION	MFR	CATALOG/SERIES NUMBER SEE NOTE 1	MOUNTING	VOLTS	QTY/FIXTURE	WATTS	LAMP TYPE	KEY NOTES
F1	FLUORESCENT STRIP WITH WIREGUARD AND LAMP SERVICE			PENDANT	277	1	28	T5/500K	
F2	PENDANT	FRUELITE	SPR LENGTH AS NOTED/275 SPEC DC AC RE	PENDANT	277	2	28	T5/500K	
F3	2X4 RECESSED DIRECT/INDIRECT	WILLIAMS	DIG-SK-532-2VNR	RECESSED	277	3	32	T8/3500K	
F4	2 X 2 RECESSED DIRECT/INDIRECT	WILLIAMS	DIG-S22	RECESSED	277	2	40	T7/3500K	
F40	2 X 2 RECESSED DIRECT/INDIRECT - DIMMING	WILLIAMS	DIG-S22 WITH DIMMING BALLAST	RECESSED	277	2	40	T7/3500K	
F5	ENTRY PENDANT	AMERSON GAS	ARLING 176-9-98	PENDANT	277	1	42	T7/3500K	8
L1	LOBBY RECESSED WALL LIGHTING	AXIS	BRBSFL - xx-w	RECESSED	277			LED ARRAY 3500K	
L1A	SURFACE LIGHTING	AXIS	BRBSFL - xx-w	SURFACE	277			LED ARRAY 3500K	
L1B	CHANNEL LIGHT	AXIS	BRBSFL - xx-w	SURFACE	277			LED ARRAY 3500K	
L2	ROUND DOWNLIGHT	ACQUITE	CHACICZA 1.5 535	RECESSED	277			LED ARRAY 3500K	
L3	MINI SQUARE DOWNLIGHT	BEGA	LED M08LED30K 8800 WFL-45	RECESSED	277			LED ARRAY 3500K	
L4	WALL MOUNT	SISTEMALUX	08840012x-11	RECESSED	277			LED ARRAY 3500K	
L5	LOBBY WALL WASH - ASYMMETRICAL	AXIS	BRBA	RECESSED	277			LED ARRAY 3500K	
L6	LOBBY PENDANT - 12" DIAMETER	VOLUSITE	TANGENT UP/DOWN CUSTOM	PENDANT	277			LED ARRAY 3500K	
L7	STARWELL LIGHT	LUMINAIRE LED	VYF4428WHS930K02770PHWT	SURFACE	277			LED ARRAY 3500K	
L8	EXIT SIGN	QUALITE	LVUG IV	SURFACE	277			LED ARRAY 3500K	
A6	AREA OF REFUGE LIGHTED SIGN	CORNELL	SHRZD	WALL - END	277			LED ARRAY 3500K	3

NOTE: THESE NUMBERS ARE NOT COMPLETE CATALOG #S. PROVIDE ALL REQUIREMENTS ON SCHEDULE NOTES, SPECS, AND DRAWINGS COMBINED.

- PROVIDE "SUPER TR" LAMPS AND MATCHING BALLASTS. BASIS OF DESIGN BASED ON SYLVANIA PROSTART FSX PROGRAMMED RAPID START BALLAST (71 BALLAST FACTORY) AND MATCHING CONTROL XPS LAMPS
- PROVIDE WALL, CEILING, OR PENDANT MOUNTING AS INDICATED ON PLANS. PROVIDE NUMBER OF FIXES AND ARROWS AS INDICATED.
- PROVIDE PROGRAMMED START BALLAST WITH ROOMS THAT HAVE OCCUPANCY SENSORS.
- VERIFY CEILING STRUCTURE AND MOUNTING HEIGHT PRIOR TO ORDERING ANY LIGHT FIXTURES.
- NO EQUIVALENTS ACCEPTED
- MOUNT 1'-0" ABOVE THE TOP OF DOOR
- PROVIDE WITH INTEGRAL PHOTOCELL CONTROL.
- DEDUCT ALTERNATE #3

2014 UNUM - HO1 Interior Renovations

PORTLAND, MAINE



PLOT JOB NO. 13-096

DRAWN

DLL

SCALE AS NOTED

ISSUE 2 Oct 2014

PERMIT SET

TITLE

ELEVATIONS AND LUMINAIRE SCHEDULE

SHEET

E400

P D T
ARCHITECTS
49 BARKNOUTH STREET
PORTLAND, MAINE 04101
207.775-4950
www.pdtinc.com

Allied Engineering
Specialty Mechanical Electrical Commissioning
160 Verneda Street
Portland, Maine 04103
P: 207.231.2300
F: 207.231.2300
Web: www.allied-eng.com

Allied Project Inc.
14005
CAD FILE: 14005E.dwg
COPYRIGHT 2014
PDT Architects
PDT Architects is a registered professional engineering firm in the state of Maine.
Maine is a registered professional engineering firm in the state of Maine.
Maine is a registered professional engineering firm in the state of Maine.