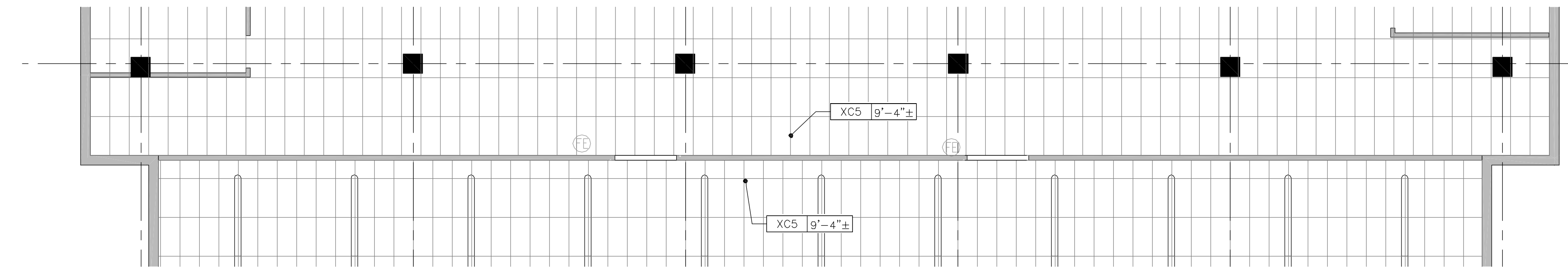
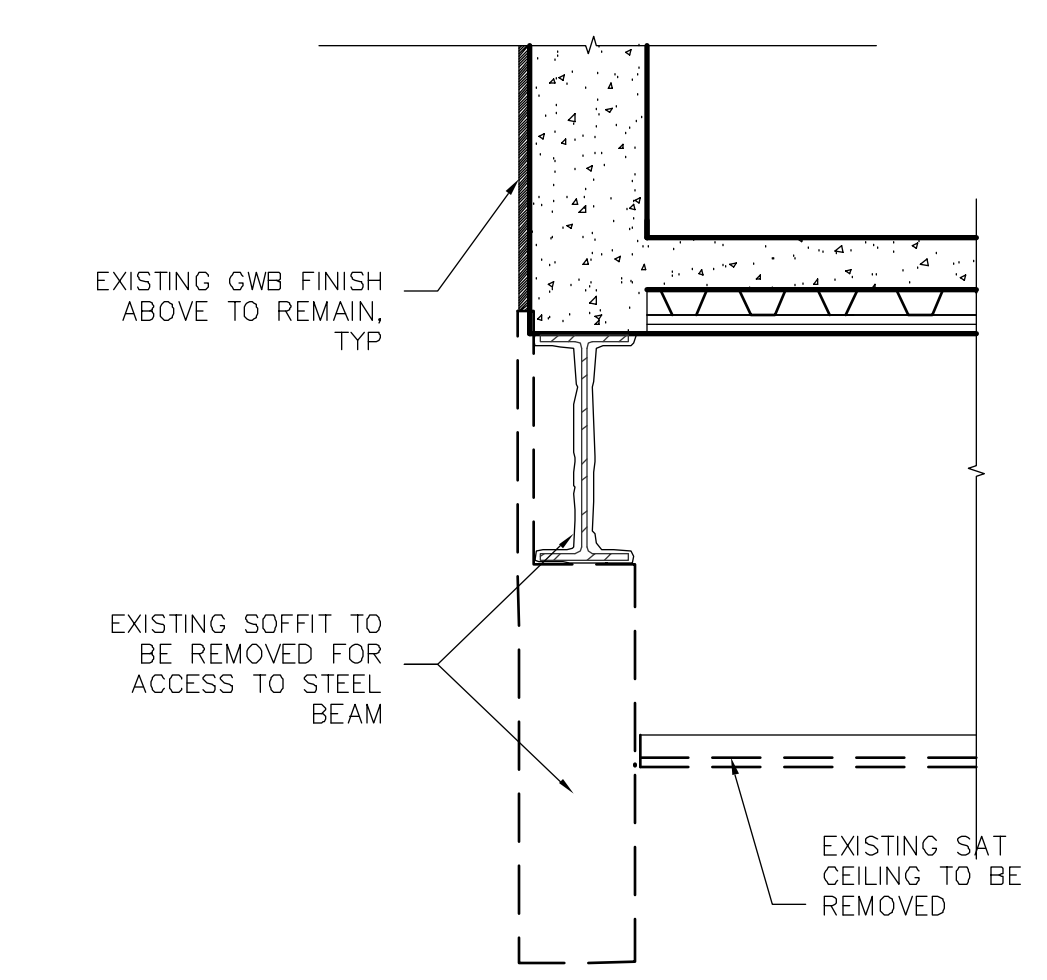


RESERVED FOR CITY OF PORTLAND



G1 THIRD FLOOR AREA 4 - DEMO RCP
1/8" = 1'-0"



G7 SECTION DETAIL AT LIGHT MONITOR SOFFIT REMOVAL
3/4" = 1'-0"

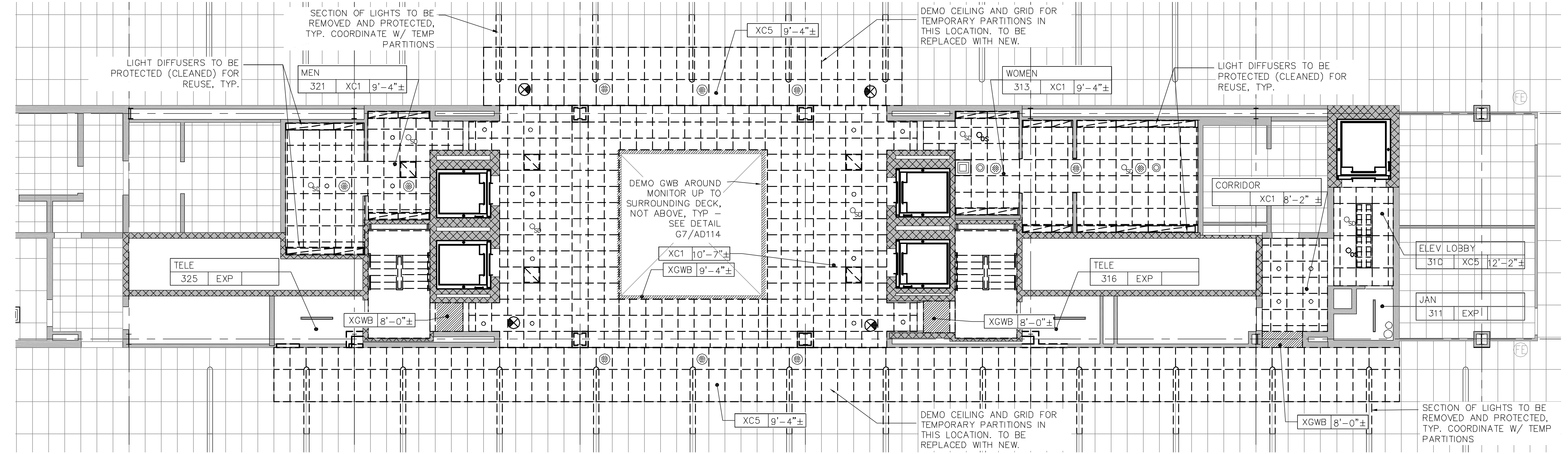
HOI--CEILING GENERAL NOTES AND LEGEND

- CEILING DEMO NOTES:**
- ALL CEILINGS WILL BE DEMOLISHED UNDER SEPARATE ABATEMENT CONTRACT, EXCEPT THOSE INDICATED WITH KEYNOTE #1 (SEE DESCRIPTION BELOW). COORDINATE ALL WORK WITH ABATEMENT CONTRACTOR.
 - ALL EQUIPMENT, LIGHTING, AND MISCELLANEOUS ITEMS TO BE SALVAGED AND CLEANED FOR REUSE.
 - EQUIPMENT SHOWN ON CEILINGS IS FOR REFERENCE ONLY. NOT ALL EQUIPMENT MAY BE SHOWN.
 - SEE PHASING PLANS FOR TEMPORARY PARTITION LOCATIONS. ALL CEILINGS TO BE REMOVED WITHIN TEMP PARTITION BOUNDARIES, BY PHASE.

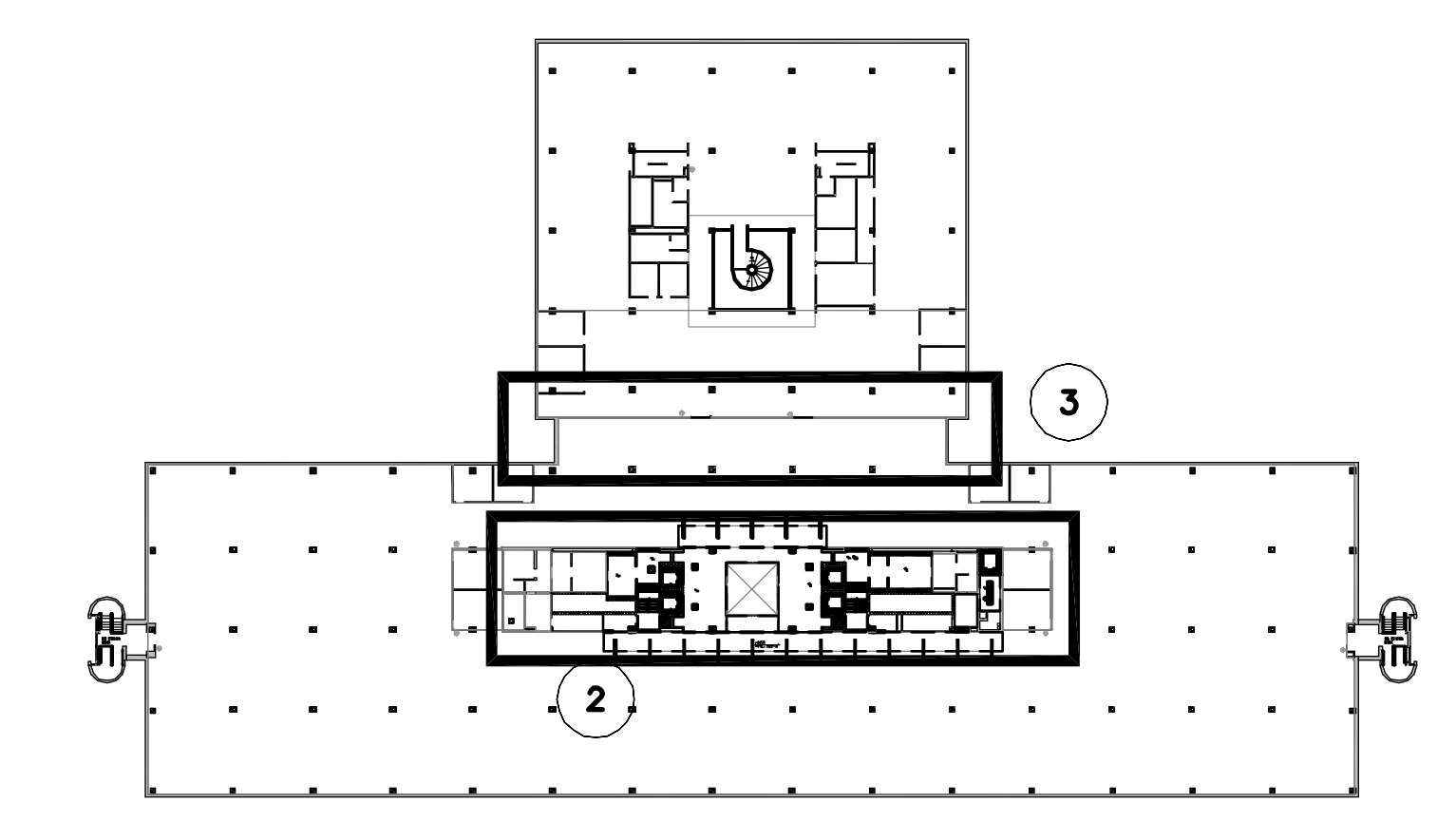
- CEILING DEMO LEGEND**
- CEILING TO BE REMOVED
 - CEILING TO REMAIN
 - GWB SOFFIT TO BE REMOVED
 - KEYNOTE
- CEILING DEMO KEYNOTES:**
- CEILING TO BE DEMOLISHED UNDER THIS CONTRACT. COORDINATE WITH ABATEMENT.

- CEILING TYPES:**
- XC1 - EXISTING 2'x2' ACOUSTIC CEILING TILE
 - XC5 - EXISTING 2'x4' ACOUSTIC CEILING TILE
 - XGWB - EXISTING GWB SOFFIT
 - XCMU - EXISTING CMU WALL
 - EXP - EXPOSED STRUCTURE

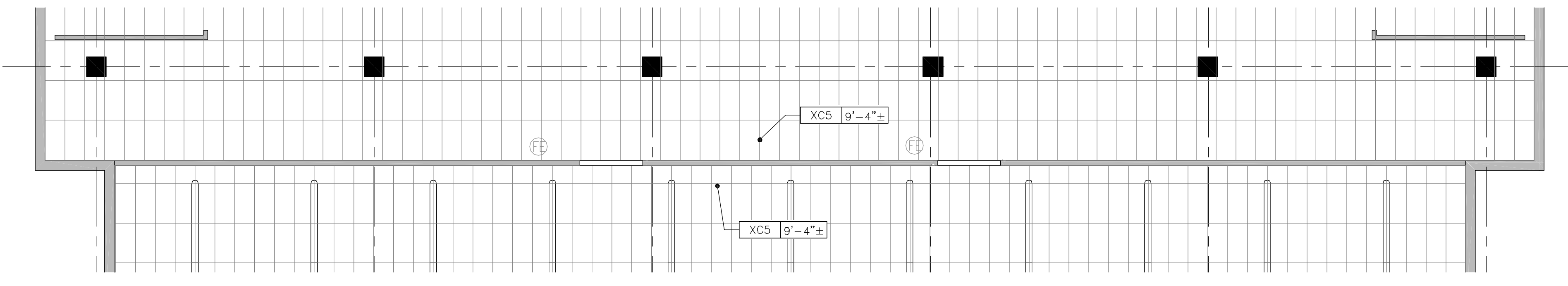
- EXISTING CEILING FIXTURES LEGEND:**
- DIRECT/INDIRECT FLUORESCENT LIGHT - INCLUDES NITE AND EMERGENCY LIGHTS, BOTH 2x2 & 2x4
 - FLUORESCENT LIGHT TROFFER
 - FLUORESCENT LIGHT - LENSED
 - PLENUM RETURNS (SIZES VARY)
 - LINEAR PENDANTS
 - RECESSED CAN
 - FLUORESCENT STRIP LIGHT
 - DIFFUSER
 - SPEAKER
 - SMOKE DETECTOR
 - MIRROR (SALVAGE)
 - EXIT SIGN



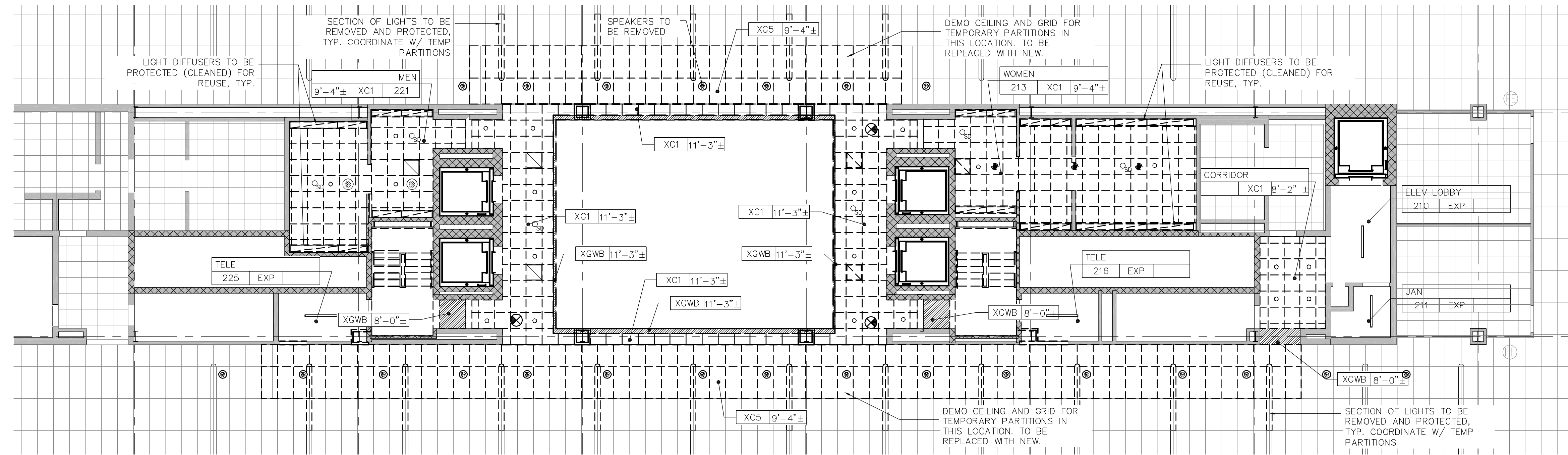
D1 THIRD FLOOR AREA 2 - STAIR E DEMO RCP
1/8" = 1'-0"



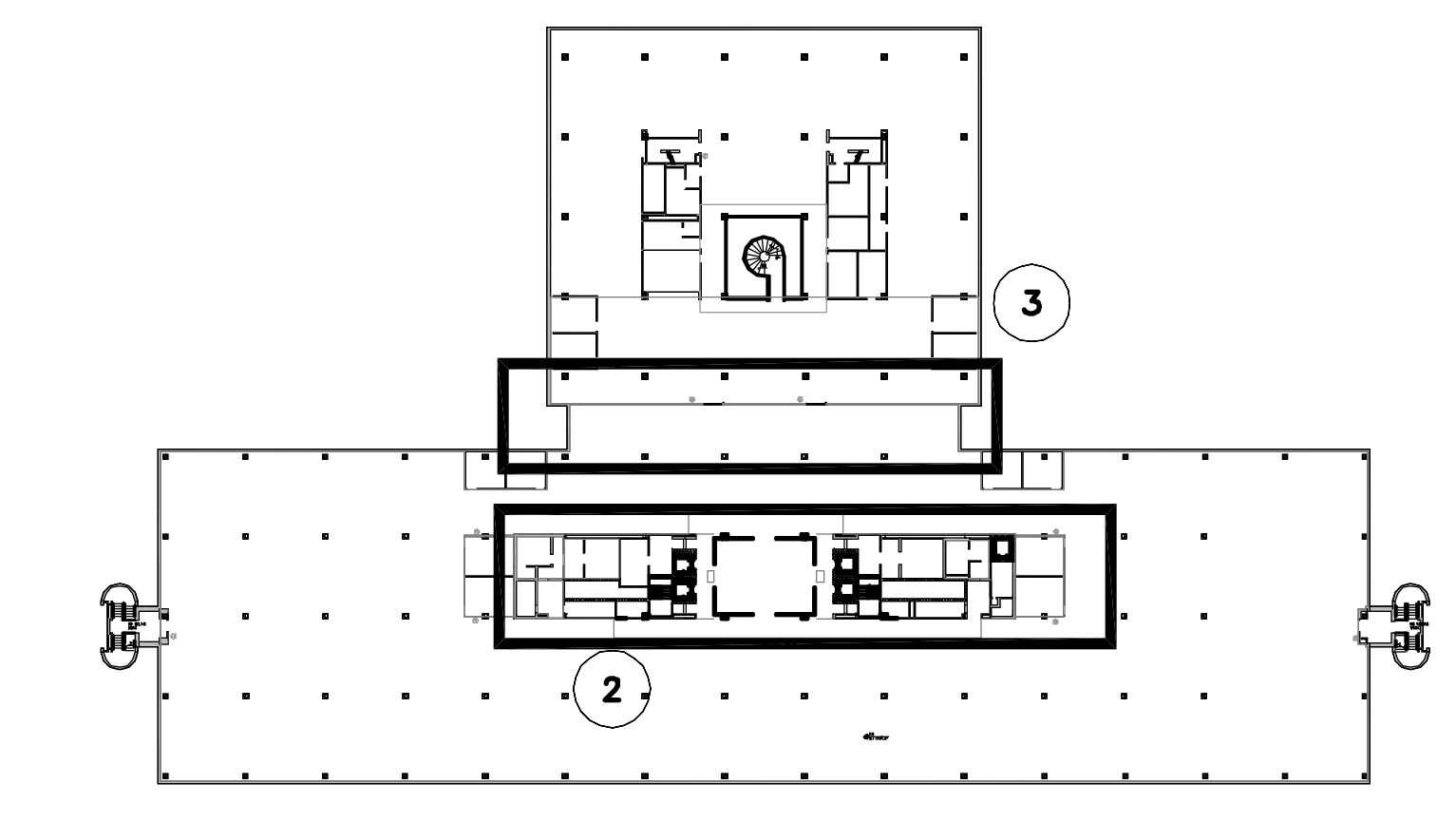
HOI- 3rd FLOOR KEY PLAN
NTS



C1 SECOND FLOOR AREA 3 - DEMO RCP
1/8" = 1'-0"



A2 SECOND FLOOR AREA 2 - STAIR D DEMO RCP
1/8" = 1'-0"



HOI- 2nd FLOOR KEY PLAN
NTS

Wednesday, October 1, 2014 5:33:44 PM CHELSEA LIPHAM

H:\MASTER PROJ FILES\UNUM 2014\10 WORKING FILES\02 ARCHITECTURAL\UNUM CAD\SHEETS\AD113-AD114 DEMO RCP\DWG