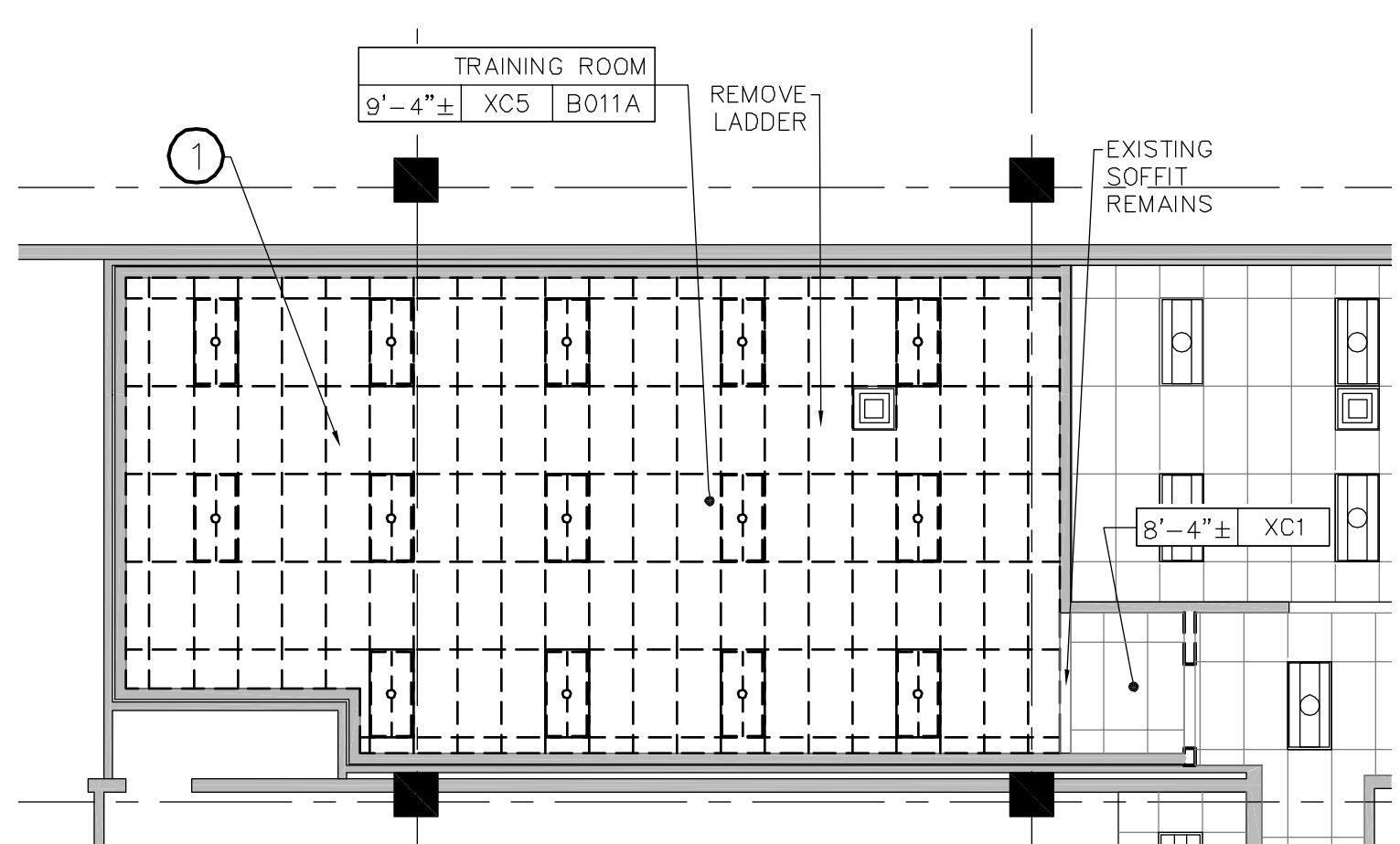


B2 1ST FLOOR AREA 2 - LOBBY AND SURROUNDING DEMO RCP
1/8" = 1'-0"



A2 BASEMENT AREA 2 - DEMO RCP
1/8" = 1'-0"

- CEILING DEMO NOTES:**
- ALL CEILING WILL BE DEMOLISHED UNDER SEPARATE ABATEMENT CONTRACT, EXCEPT THOSE INDICATED WITH KEYNOTE #1 (SEE DESCRIPTION BELOW). COORDINATE ALL WORK WITH ABATEMENT CONTRACTOR.
 - ALL EQUIPMENT, LIGHTING, AND MISCELLANEOUS ITEMS TO BE SALVAGED AND CLEANED FOR REUSE.
 - EQUIPMENT SHOWN ON CEILING IS FOR REFERENCE ONLY. NOT ALL EQUIPMENT MAY BE SHOWN.
 - SEE PHASING PLANS FOR TEMPORARY PARTITION LOCATIONS. ALL CEILING TO BE REMOVED WITHIN TEMP PARTITION BOUNDARIES, BY PHASE.

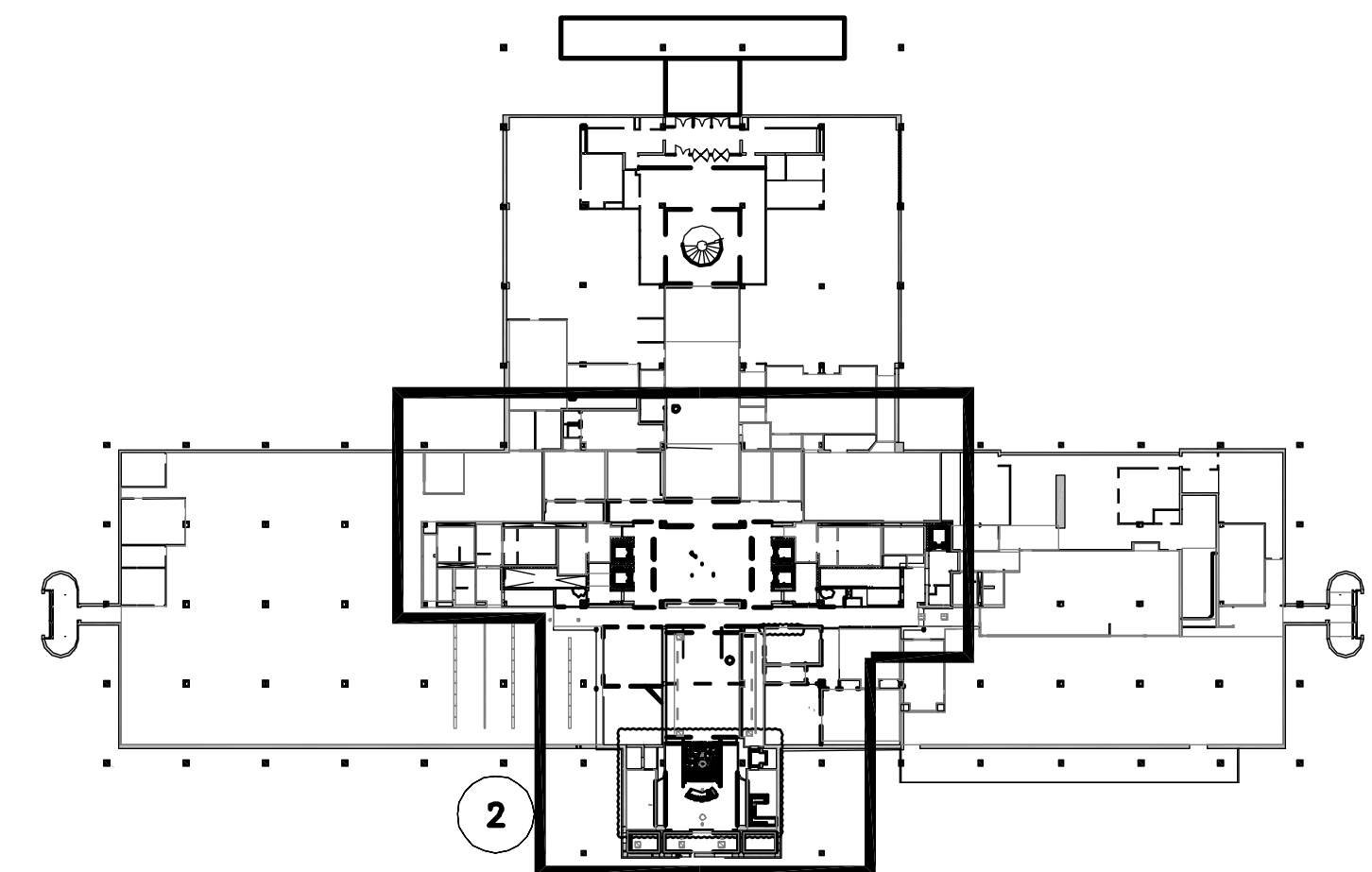
- CEILING DEMO LEGEND**
- [Grid with 'X'] CEILING TO BE REMOVED
 - [Grid with 'R'] CEILING TO REMAIN
 - [Hatched] GWB SOFFIT TO BE REMOVED
 - ① KEYNOTE
 - Cl 9'-0" Clg. Height of EXIST. (Match Existing)
 - Clg. Type

- CEILING DEMO KEYNOTES:**
- ① CEILING TO BE DEMOLISHED UNDER THIS CONTRACT. COORDINATE WITH ABATEMENT.

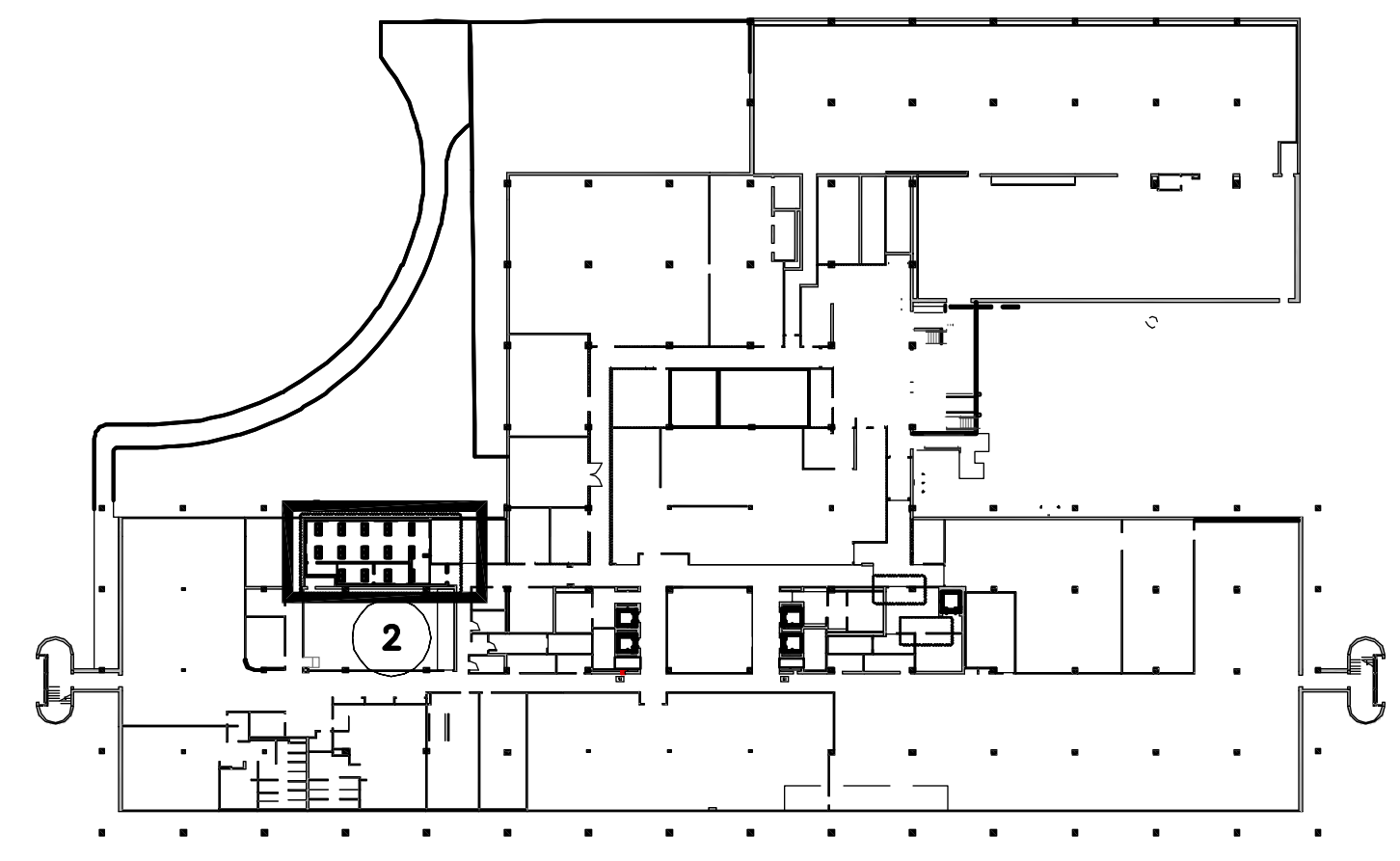
HOI-CEILING GENERAL NOTES AND LEGEND

- CEILING TYPES:**
- XC1 - EXISTING 2'x2' ACOUSTIC CEILING TILE
 - XC5 - EXISTING 2'x4' ACOUSTIC CEILING TILE
 - XGWB - EXISTING GWB SOFFIT
 - XCMU - EXISTING CMU WALL
 - EXP - EXPOSED STRUCTURE

- EXISTING CEILING FIXTURES LEGEND:**
- [Symbol] DIRECT/INDIRECT FLUORESCENT LIGHT - INCLUDES NITE AND EMERGENCY LIGHTS, BOTH 2x2 & 2x4
 - [Symbol] FLUORESCENT LIGHT TROFFER
 - [Symbol] FLUORESCENT LIGHT - LENSED
 - [Symbol] PLENUM RETURNS (SIZES VARY)
 - [Symbol] LINEAR PENDANTS
 - [Symbol] RECESSED CAN
 - [Symbol] FLUORESCENT STRIP LIGHT
 - [Symbol] DIFFUSER
 - [Symbol] SPEAKER
 - [Symbol] SMOKE DETECTOR
 - [Symbol] MIRROR (SALVAGE)
 - [Symbol] EXIT SIGN



HOI- 1st FLOOR KEY PLAN
N15



HOI- BASEMENT KEY PLAN
N15



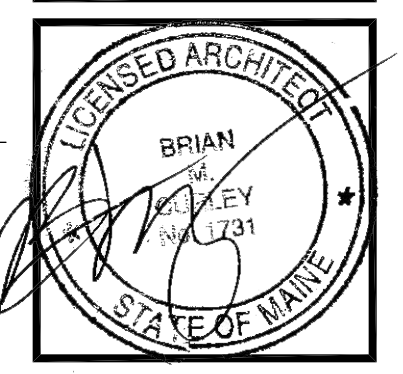
Allied Engineering
Structural Mechanical
Electrical Commissioning

160 Veranda Street
Portland, Maine 04103
T: 207.231.2366
F: 207.231.2366
Web: www.allied-eng.com

Project No:
CAD File:

COPYRIGHT 2014
PDT Architects
Reuse or reproduction of the contents of this document is prohibited without the written permission of PDT Architects.

2014 UNUM - HOI Interior Renovations
PORTLAND, MAINE



PDT JOB NO.
13-096

DRAWN
CLL

SCALE
1/8" = 1'-0"

ISSUE: 2 Oct 2014
PERMIT SET

TITLE
BASEMENT/1ST FL
ENLARGED
DEMO RCP

SHEET

AD-113

Wednesday, October 1, 2014 5:32:14 PM CHelsea.LIPHAM

H:\MASTER PROJ FILES\UNUM 2014\10 WORKING FILES\02 ARCHITECTURAL\UNUM CAD\SHEETS\AD113-AD114 DEMO RCP\DWG