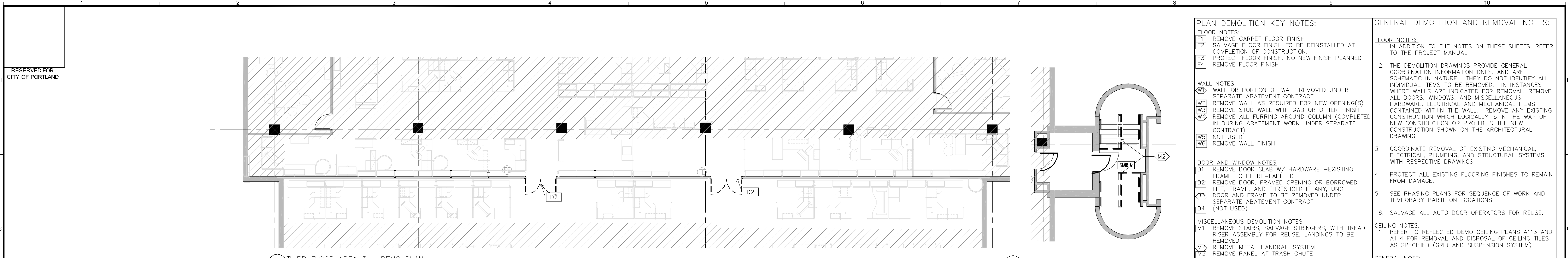
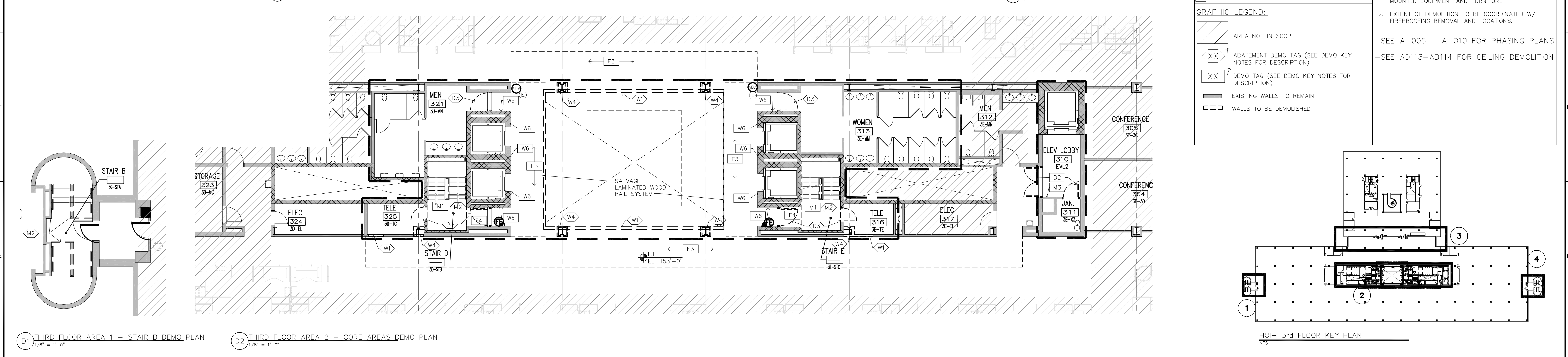


H:\MASTER PROJ FILES\2014\10 WORKING FILES\02 ARCHITECTURAL\UNUM CAD\SHEETS\UNUM HOT-PLANS 2ND AND 3RD.DWG
 Wednesday, October 1, 2014 5:28:28 PM CHELSEA LIPHAM



G1 THIRD FLOOR AREA 3 - DEMO PLAN
1/8" = 1'-0"

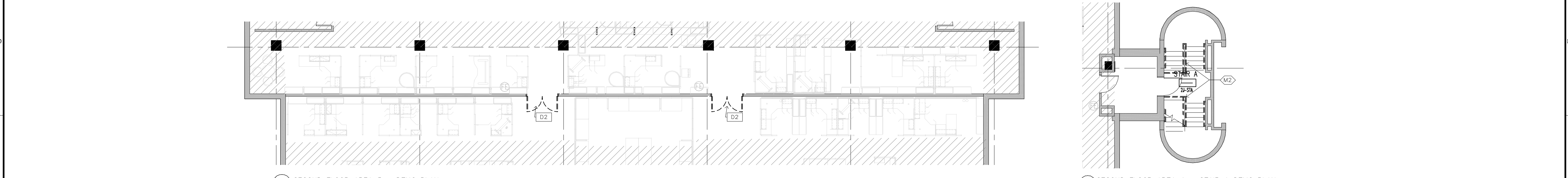
G7 THIRD FLOOR AREA 4 - STAIR A PLAN
1/8" = 1'-0"



D1 THIRD FLOOR AREA 1 - STAIR B DEMO PLAN
1/8" = 1'-0"

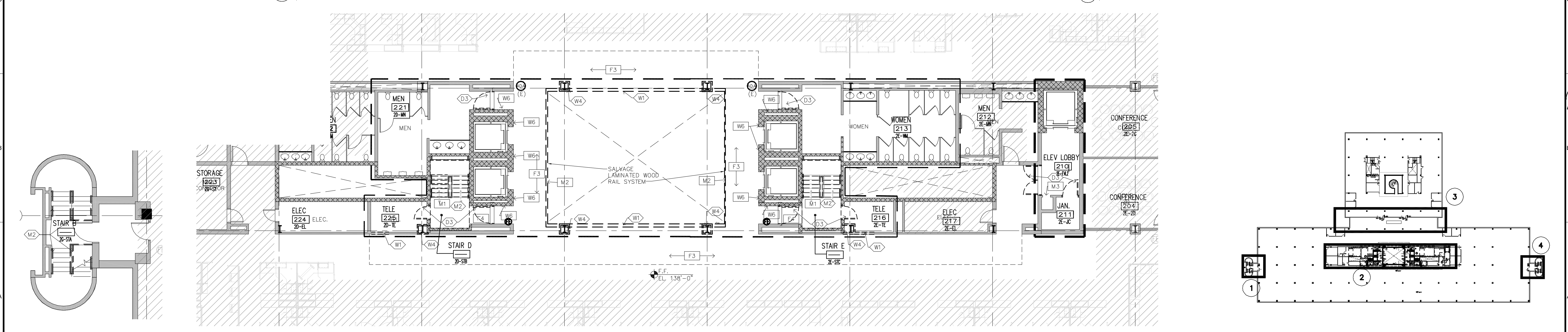
D2 THIRD FLOOR AREA 2 - CORE AREAS DEMO PLAN
1/8" = 1'-0"

HOI - 3rd FLOOR KEY PLAN
N15



C1 SECOND FLOOR AREA 3 - DEMO PLAN
1/8" = 1'-0"

C7 SECOND FLOOR AREA 4 - STAIR A DEMO PLAN
1/8" = 1'-0"



A1 SECOND FLOOR AREA 1 - STAIR B DEMO PLAN
1/8" = 1'-0"

A2 SECOND FLOOR AREA 2 - CORE AREAS DEMO PLAN
1/8" = 1'-0"

HOI - 2nd FLOOR KEY PLAN
N15

PLAN DEMOLITION KEY NOTES:

FLOOR NOTES:
 F1 REMOVE CARPET FLOOR FINISH
 F2 SALVAGE FLOOR FINISH TO BE REINSTALLED AT COMPLETION OF CONSTRUCTION.
 F3 PROTECT FLOOR FINISH, NO NEW FINISH PLANNED
 F4 REMOVE FLOOR FINISH

WALL NOTES:
 W1 WALL OR PORTION OF WALL REMOVED UNDER SEPARATE ABATEMENT CONTRACT
 W2 REMOVE WALL AS REQUIRED FOR NEW OPENING(S)
 W3 REMOVE STUD WALL WITH GWB OR OTHER FINISH
 W4 REMOVE ALL FURRING AROUND COLUMN (COMPLETED IN DURING ABATEMENT WORK UNDER SEPARATE CONTRACT)
 W5 NOT USED
 W6 REMOVE WALL FINISH

DOOR AND WINDOW NOTES:
 D1 REMOVE DOOR SLAB W/ HARDWARE -EXISTING FRAME TO BE RE-LABELED
 D2 REMOVE DOOR, FRAMED OPENING OR BORROWED LITE, FRAME, AND THRESHOLD IF ANY, UNO DOOR AND FRAME TO BE REMOVED UNDER SEPARATE ABATEMENT CONTRACT
 D3 (NOT USED)
 D4 (NOT USED)

MISCELLANEOUS DEMOLITION NOTES:
 M1 REMOVE STAIRS, SALVAGE STRINGERS, WITH TREAD RISER ASSEMBLY FOR REUSE, LANDINGS TO BE REMOVED
 M2 REMOVE METAL HANDRAIL SYSTEM
 M3 REMOVE PANEL AT TRASH CHUTE
 M4 REMOVE GLASS RAIL SYSTEM
 M5 REMOVE WOOD PANEL & TRIM

GRAPHIC LEGEND:

- AREA NOT IN SCOPE
- ABATEMENT DEMO TAG (SEE DEMO KEY NOTES FOR DESCRIPTION)
- DEMO TAG (SEE DEMO KEY NOTES FOR DESCRIPTION)
- EXISTING WALLS TO REMAIN
- WALLS TO BE DEMOLISHED

GENERAL DEMOLITION AND REMOVAL NOTES:

FLOOR NOTES:

- IN ADDITION TO THE NOTES ON THESE SHEETS, REFER TO THE PROJECT MANUAL
- THE DEMOLITION DRAWINGS PROVIDE GENERAL COORDINATION INFORMATION ONLY, AND ARE SCHEMATIC IN NATURE. THEY DO NOT IDENTIFY ALL INDIVIDUAL ITEMS TO BE REMOVED. IN INSTANCES WHERE WALLS ARE INDICATED FOR REMOVAL, REMOVE ALL DOORS, WINDOWS, AND MISCELLANEOUS HARDWARE, ELECTRICAL AND MECHANICAL ITEMS CONTAINED WITHIN THE WALL. REMOVE ANY EXISTING CONSTRUCTION WHICH LOGICALLY IS IN THE WAY OF NEW CONSTRUCTION OR PROHIBITS THE NEW CONSTRUCTION SHOWN ON THE ARCHITECTURAL DRAWING.
- COORDINATE REMOVAL OF EXISTING MECHANICAL, ELECTRICAL, PLUMBING, AND STRUCTURAL SYSTEMS WITH RESPECTIVE DRAWINGS
- PROTECT ALL EXISTING FLOORING FINISHES TO REMAIN FROM DAMAGE.
- SEE PHASING PLANS FOR SEQUENCE OF WORK AND TEMPORARY PARTITION LOCATIONS
- SALVAGE ALL AUTO DOOR OPERATORS FOR REUSE.

CEILING NOTES:

- REFER TO REFLECTED DEMO CEILING PLANS A113 AND A114 FOR REMOVAL AND DISPOSAL OF CEILING TILES AS SPECIFIED (GRID AND SUSPENSION SYSTEM)

GENERAL NOTE:

- OWNER RESPONSIBLE TO REMOVE LOOSE AND SURFACE MOUNTED EQUIPMENT AND FURNITURE
- EXTENT OF DEMOLITION TO BE COORDINATED W/ FIREPROOFING REMOVAL AND LOCATIONS.

-SEE A-005 - A-010 FOR PHASING PLANS
 -SEE AD113-AD114 FOR CEILING DEMOLITION

PDT ARCHITECTS
 49 DARTMOUTH STREET
 PORTLAND, MAINE 04101
 207-775-1099
 www.pdtarch.com

Allied Engineering
 Structural Mechanical
 Electrical Commissioning

160 Veranda Street
 Portland, Maine 04103
 F: 207-231-2360
 P: 207-231-2366
 Web: www.allied-eng.com

allied Project No:
 CAD File:

COPYRIGHT 2014
 PDT Architects
 Reuse or reproduction of the
 contents of this document is not
 permitted without the written
 permission of PDT Architects.

2014 UNUM - HOI Interior Renovations
 PORTLAND, MAINE

LICENSED ARCHITECT
 BRIAN
 W. LIPHAM
 STATE OF MAINE

PDT JOB NO.
13-096

DRAWN
JRB

SCALE
1/8" = 1'-0"

ISSUE: 2 Oct 2014
PERMIT SET

TITLE
2ND / 3RD FLOOR
ENLARGED DEMO
PLANS

SHEET
AD112