

PLAN DEMOLITION KEY NOTES:

FLOOR NOTES:
F1 REMOVE CARPET FLOOR FINISH
F2 SALVAGE FLOOR FINISH TO BE REINSTALLED AT COMPLETION OF CONSTRUCTION.
F3 PROTECT FLOOR FINISH, NO NEW FINISH PLANNED
F4 REMOVE FLOOR FINISH

WALL NOTES:
W1 WALL OR PORTION OF WALL REMOVED UNDER SEPARATE ABATEMENT CONTRACT
W2 REMOVE WALL AS REQUIRED FOR NEW OPENING(S)
W3 REMOVE STUD WALL WITH CWB OR OTHER FINISH REMOVE ALL FURRING AROUND COLUMN (COMPLETED IN DURING ABATEMENT WORK UNDER SEPARATE CONTRACT)
W4 NOT USED
W5 REMOVE WALL FINISH

DOOR AND WINDOW NOTES:
D1 REMOVE DOOR SLAB W/ HARDWARE -EXISTING FRAME TO BE RE-LABELLED
D2 REMOVE DOOR, FRAMED OPENING OR BORROWED LITE, FRAME, AND THRESHOLD IF ANY, UNO DOOR AND FRAME TO BE REMOVED UNDER SEPARATE ABATEMENT CONTRACT
D3 (NOT USED)

MISCELLANEOUS DEMOLITION NOTES:
M1 REMOVE STAIRS, SALVAGE STRINGERS, WITH TREAD RISER ASSEMBLY FOR REUSE, LANDINGS TO BE REMOVED
M2 REMOVE METAL HANDRAIL SYSTEM
M3 REMOVE PANEL AT TRASH CHUTE
M4 REMOVE GLASS RAIL SYSTEM
M5 REMOVE WOOD PANEL & TRIM

GRAPHIC LEGEND:
AREA NOT IN SCOPE
ABATEMENT DEMO TAG (SEE DEMO KEY NOTES FOR DESCRIPTION)
DEMO TAG (SEE DEMO KEY NOTES FOR DESCRIPTION)
EXISTING WALLS TO REMAIN
WALLS TO BE DEMOLISHED

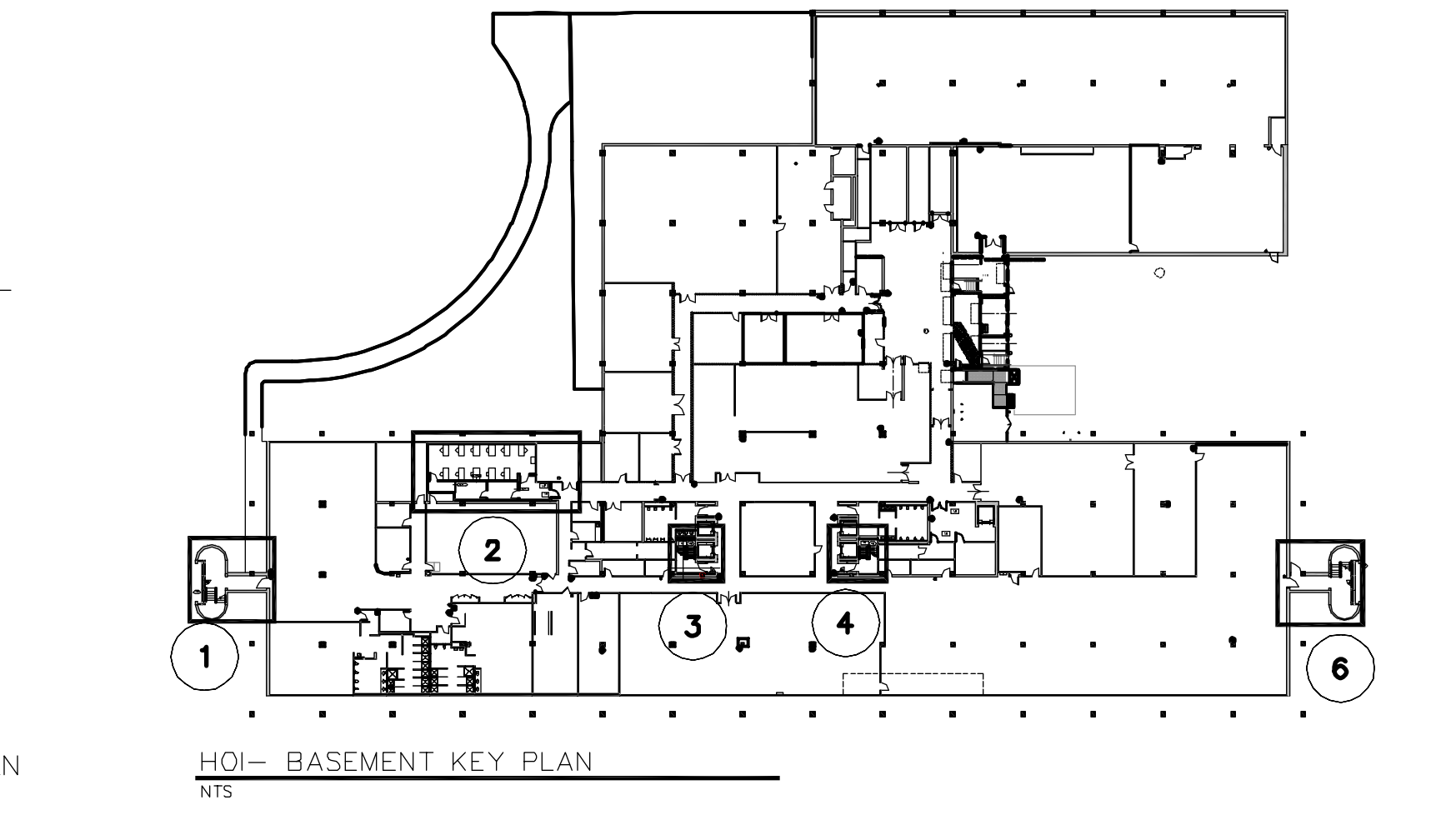
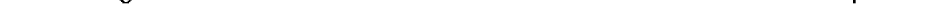
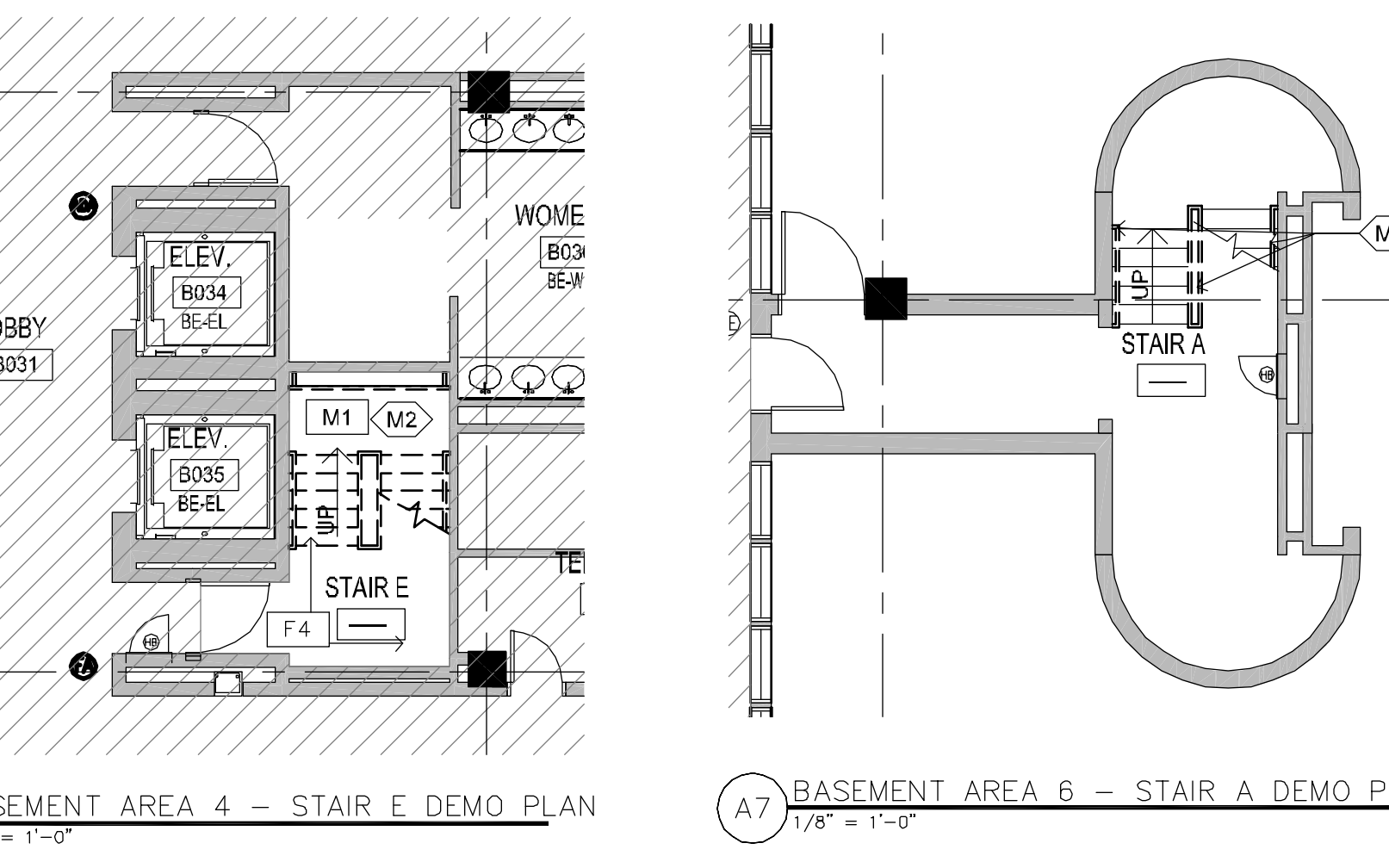
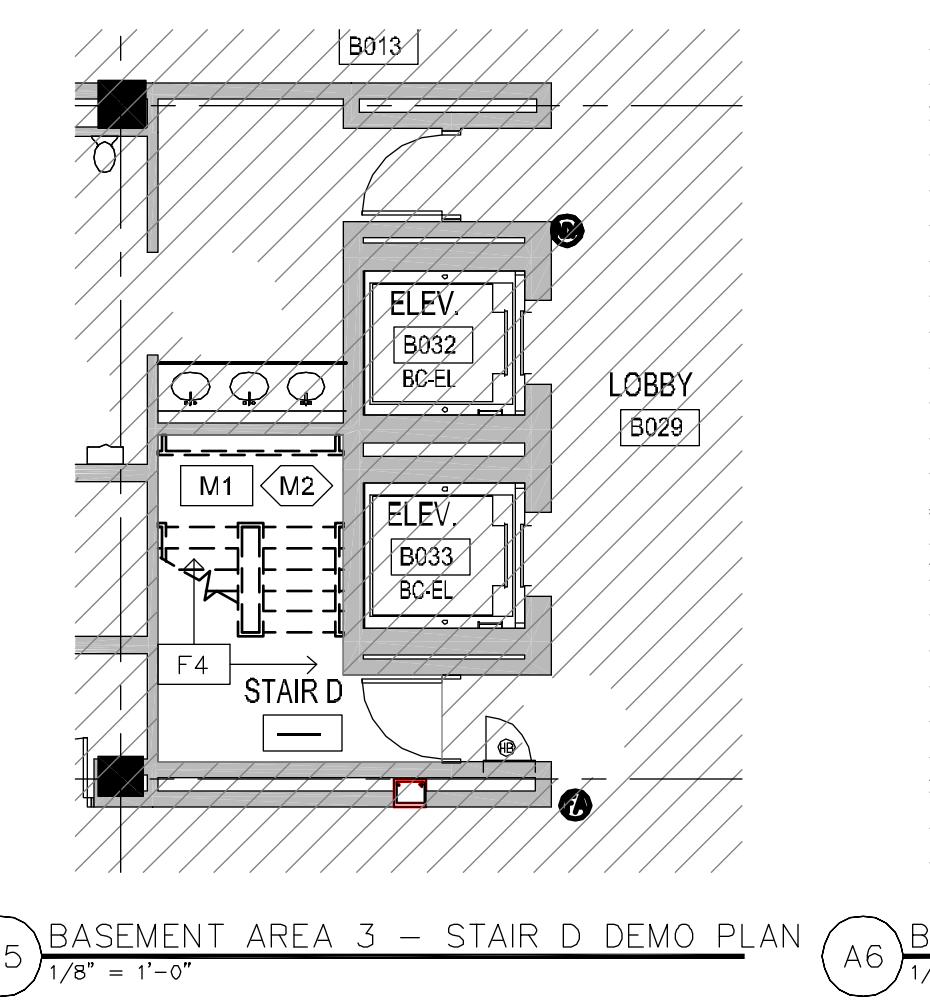
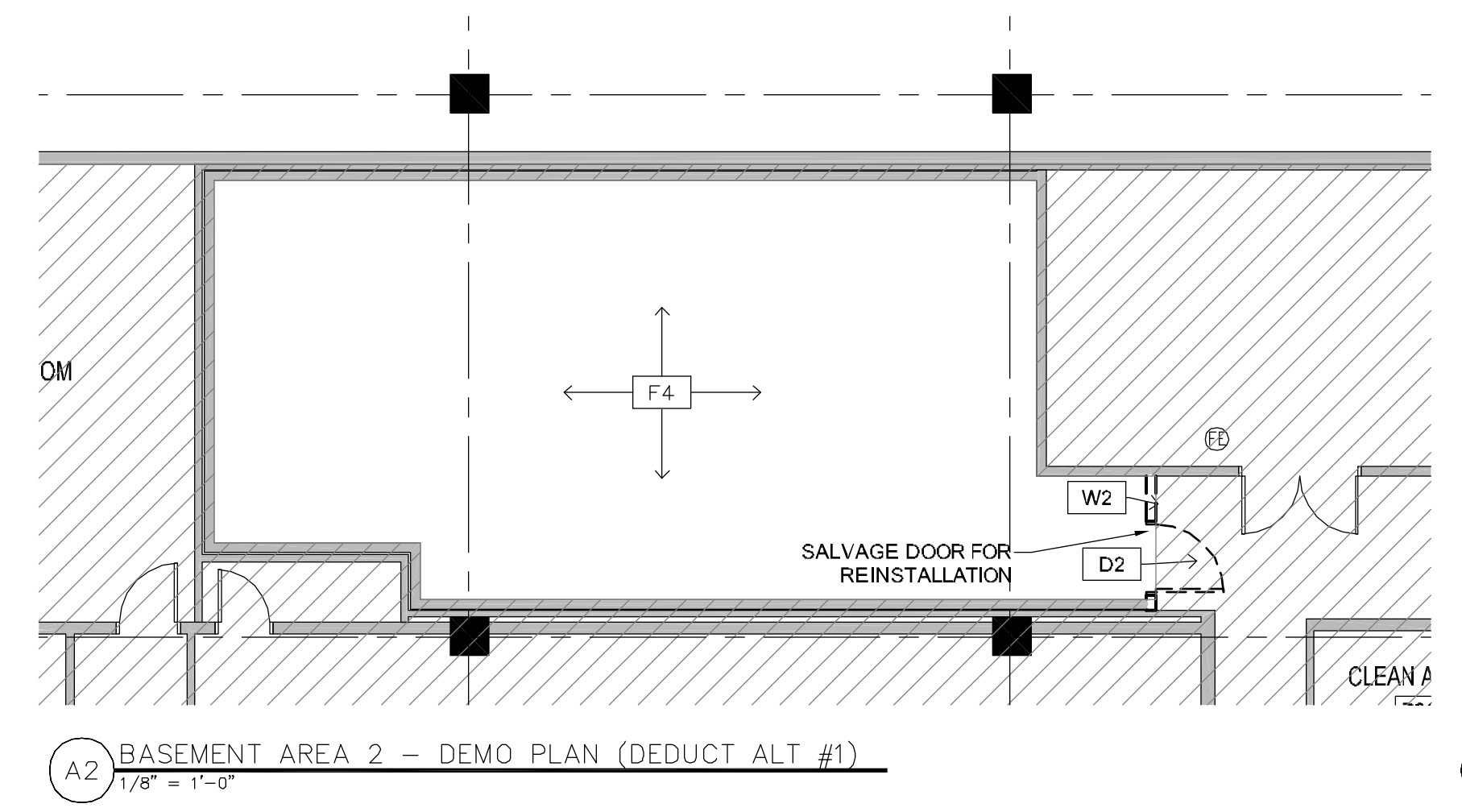
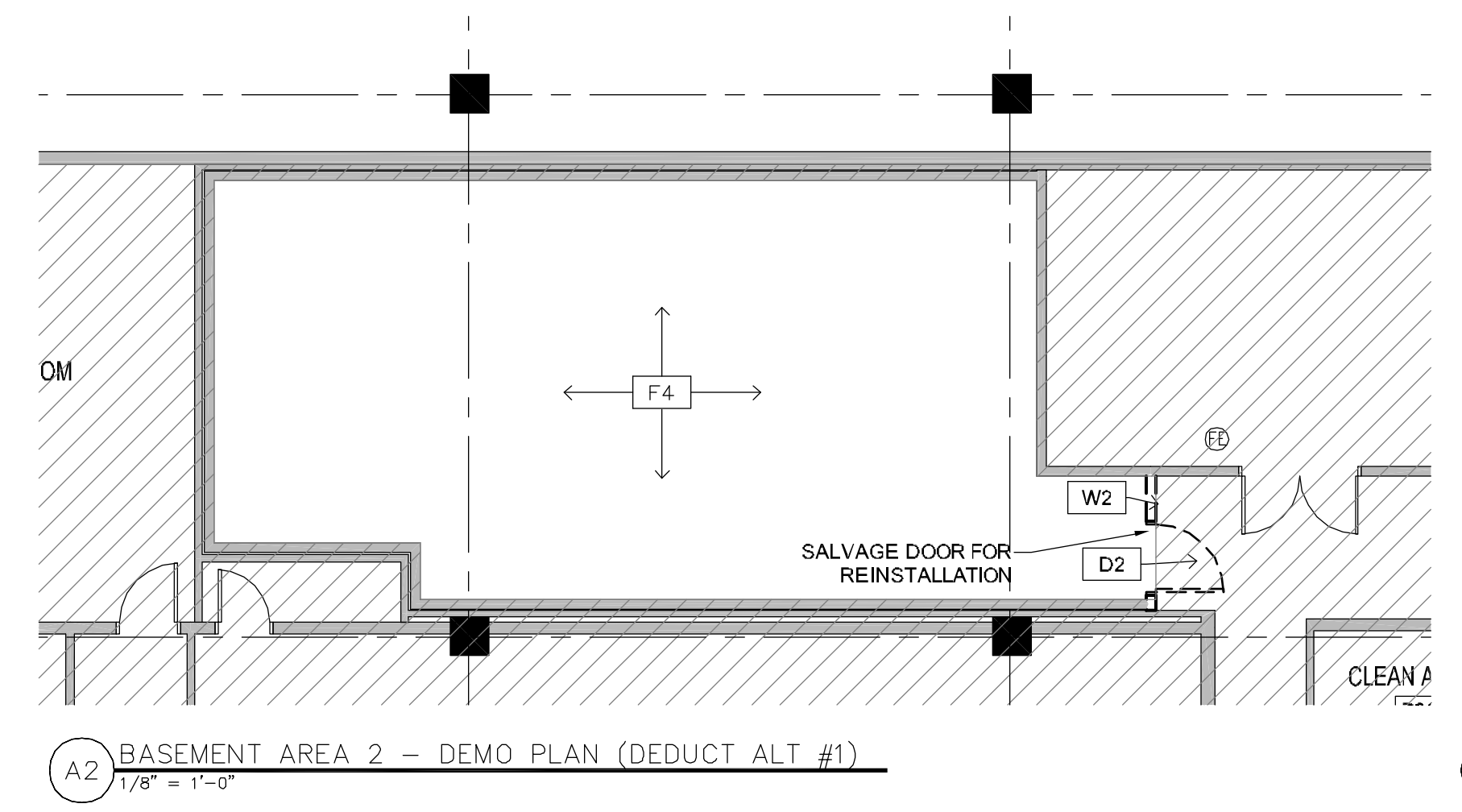
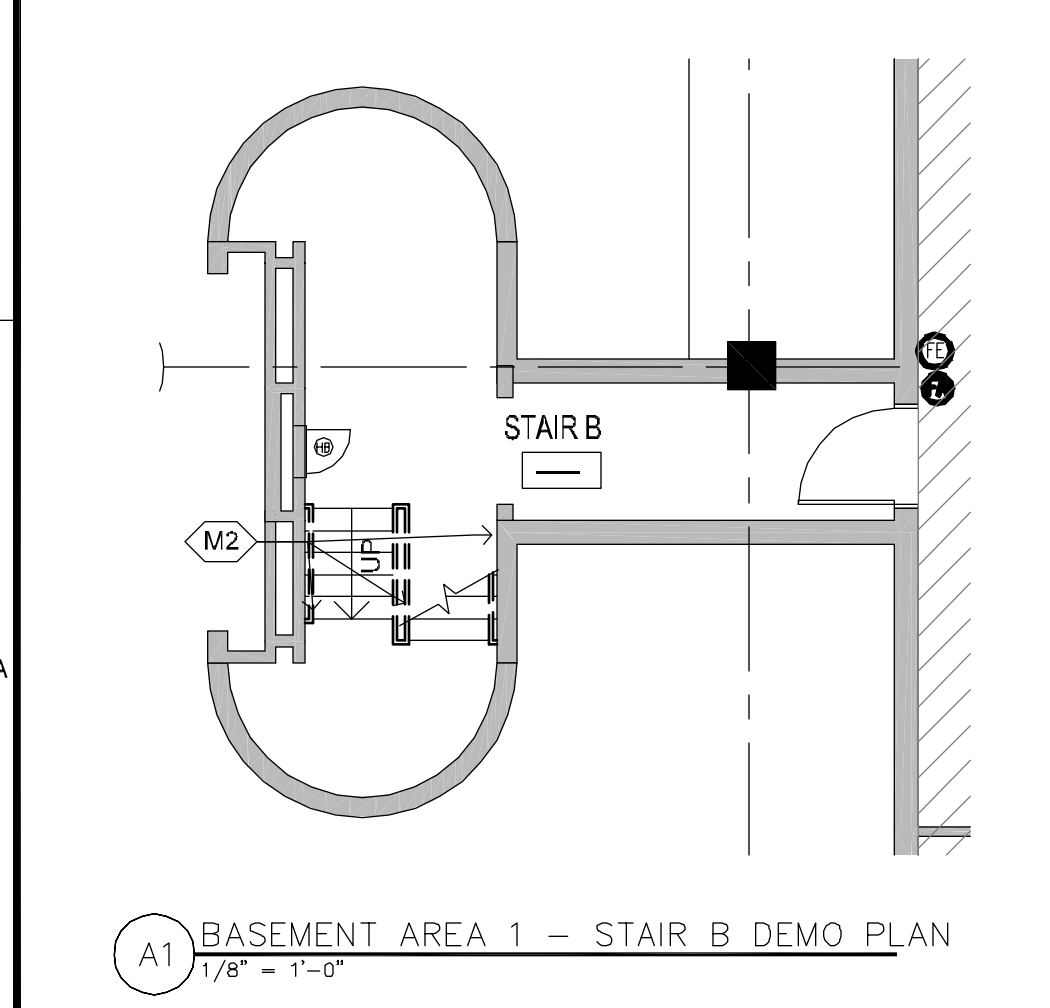
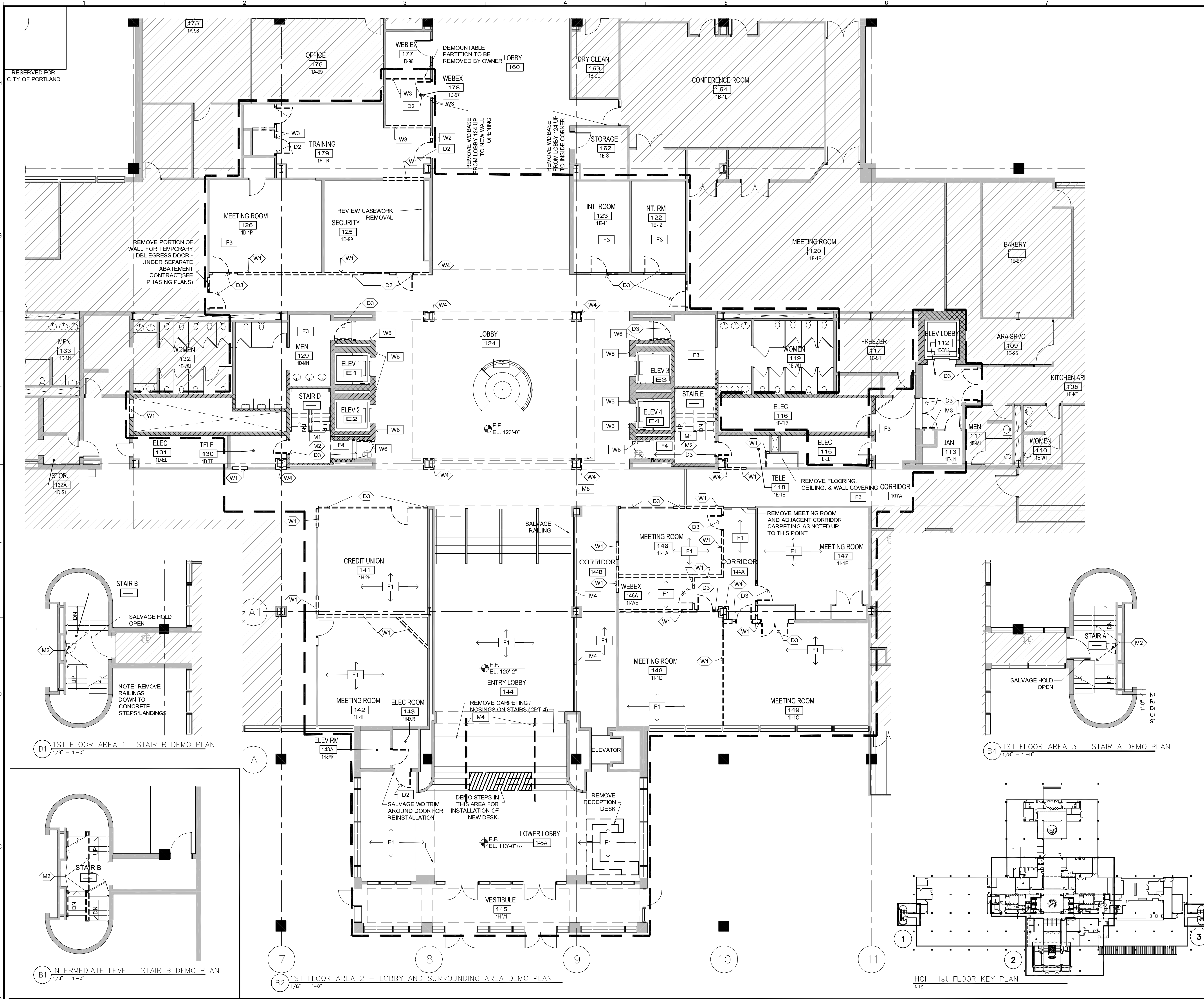
GENERAL DEMOLITION AND REMOVAL NOTES:

FLOOR NOTES:
1. IN ADDITION TO THE NOTES ON THESE SHEETS, REFER TO THE PROJECT MANUAL.
2. THE DEMOLITION DRAWINGS PROVIDE GENERAL COORDINATION INFORMATION ONLY, AND ARE SCHEMATIC IN NATURE. THEY DO NOT IDENTIFY ALL INDIVIDUAL ITEMS TO BE REMOVED. IN INSTANCES WHERE WALLS ARE INDICATED FOR REMOVAL, REMOVE ALL DOORS, WINDOWS, AND MISCELLANEOUS HARDWARE, ELECTRICAL AND MECHANICAL ITEMS CONTAINED WITHIN THE WALL. REMOVE ANY EXISTING CONSTRUCTION WHICH LOGICALLY IS IN THE WAY OF NEW CONSTRUCTION OR PROHIBITS THE NEW CONSTRUCTION SHOWN ON THE ARCHITECTURAL DRAWING.
3. COORDINATE REMOVAL OF EXISTING MECHANICAL, ELECTRICAL, PLUMBING, AND STRUCTURAL SYSTEMS WITH RESPECTIVE DRAWINGS.
4. PROTECT ALL EXISTING FLOORING FINISHES TO REMAIN FROM DAMAGE.
5. SEE PHASING PLANS FOR SEQUENCE OF WORK AND TEMPORARY PARTITION LOCATIONS.
6. SALVAGE ALL AUTO DOOR OPERATORS FOR REUSE.

CEILING NOTES:
1. REFER TO REFLECTED DEMO CEILING PLANS A13 AND A114 FOR REMOVAL AND DISPOSAL OF CEILING TILES AS SPECIFIED (GRID AND SUSPENSION SYSTEM)

GENERAL NOTE:
1. OWNER RESPONSIBLE TO REMOVE LOOSE AND SURFACE MOUNTED EQUIPMENT AND FURNITURE
2. EXTENT OF DEMOLITION TO BE COORDINATED W/ FIREPROOFING REMOVAL AND LOCATIONS.

-SEE A-005 - A-010 FOR PHASING PLANS
-SEE AD113-AD114 FOR CEILING DEMOLITION



Wednesday, October 1, 2014 5:42:41 PM CHELSEA LIPHAM

H:\MASTER PROJ FILES\UNUM 2014\10 WORKING FILES\02 ARCHITECTURAL\UNUM CAD\SHEETS\PLANS - BASEMENT AND 1ST.DWG