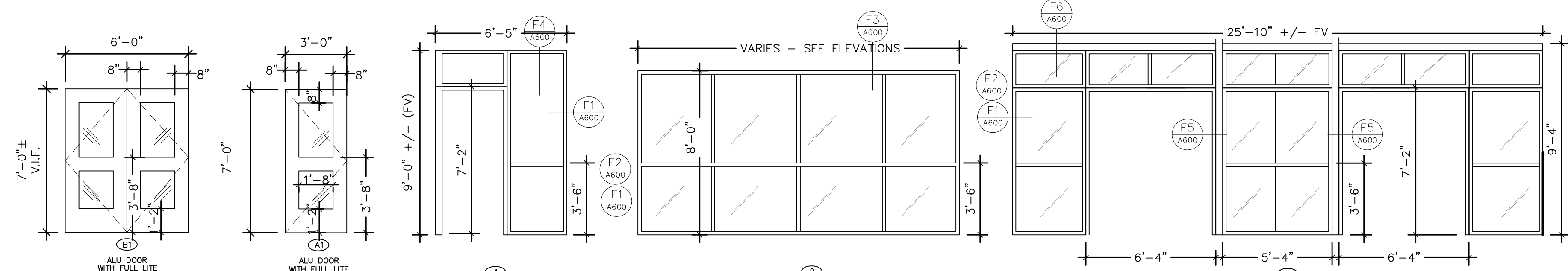
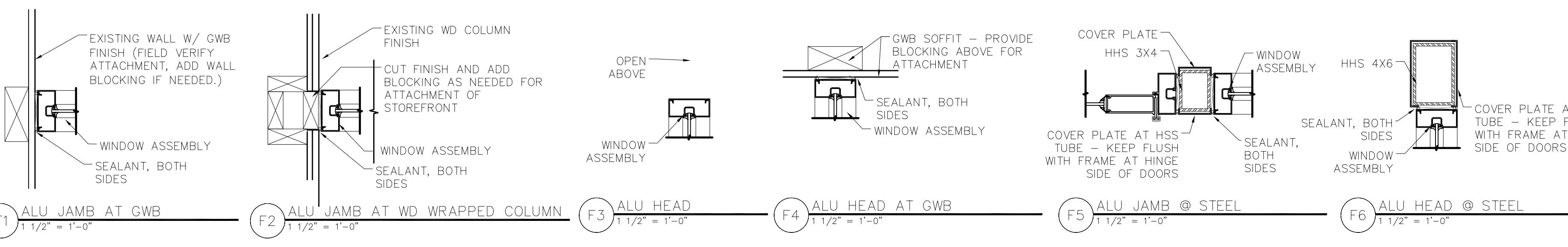


ALUMINUM STOREFRONT SCHEDULE

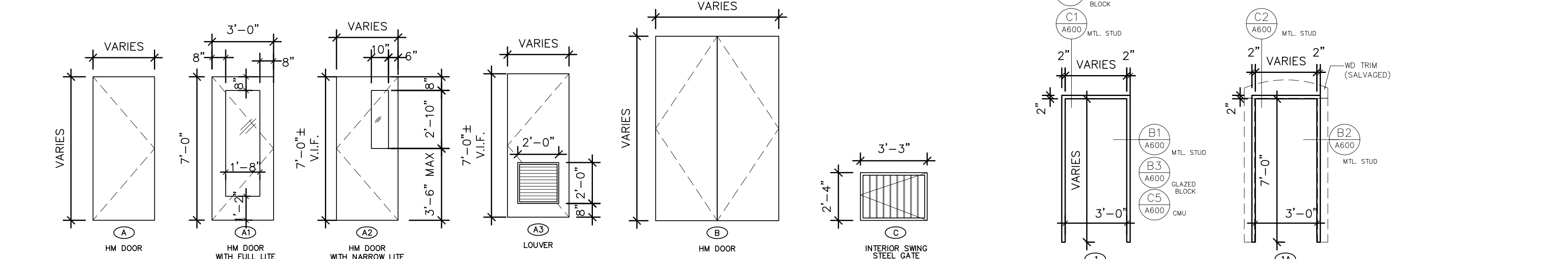
ALU DOOR SCHEDULE		DOOR				FRAME				WALL														
Door #	Room Name	UNUM Tag	Classification	Type	Mat'l	Size	Label	Mat'l	Type	Head Dim.	Head Detail #	Jamb Detail #	Label	Existing Opening	Type	Rating	Threshold	Access Controls	Hardware Set	Crash Bar	Hold Open	Auto Opener	Accessories/Notes:	
144.1	Lobby		Secure/Egress	B1	ALU	36x84 (2)	1240	HM	1	2"					Storefront			x	25	x	x	x		Review Special Access.
144.2	Lobby		Secure/Egress	B1	ALU	36x84 (2)	1240	HM	1	2"					Storefront			x	25	x	x	x		Review Special Access.
144B	Corridor	11-CR	Secure	A1	ALU	36x84	1240	HM	1	2"				Storefront				x	28	x	x		Card Access.	



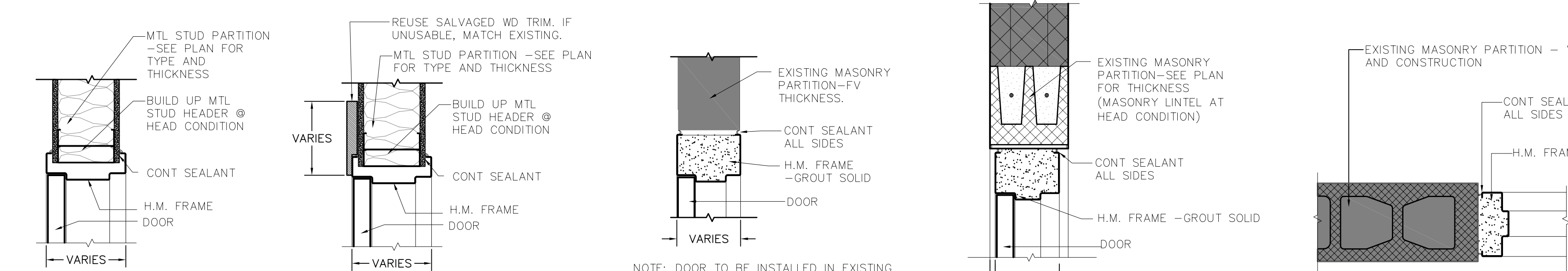
H01 - ALU DOOR TYPES
H01 - ALU FRAME TYPES



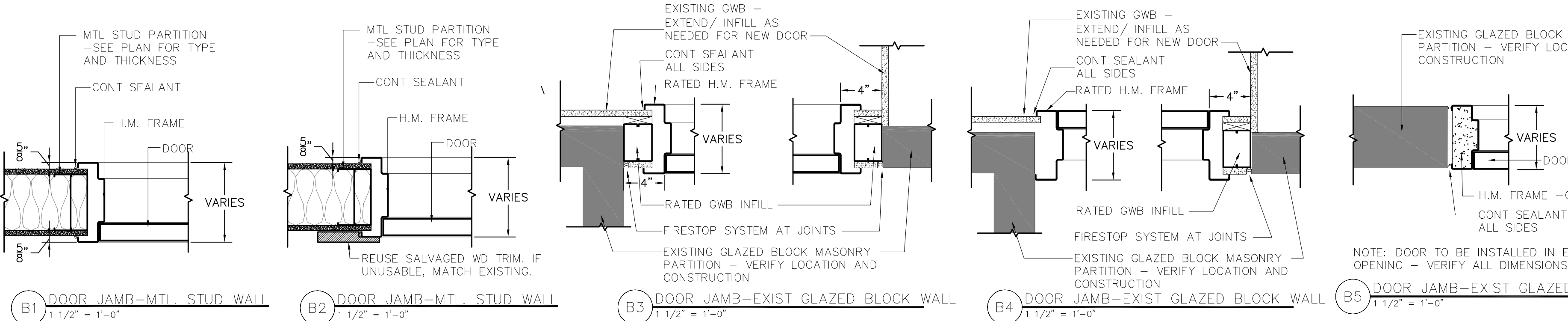
F1 ALU JAMB AT GWB
F2 ALU JAMB AT WD WRAPPED COLUMN
F3 ALU HEAD
F4 ALU HEAD AT GWB
F5 ALU JAMB @ STEEL
F6 ALU HEAD @ STEEL



H01 - HM DOOR TYPES
H01 - HM FRAME TYPES



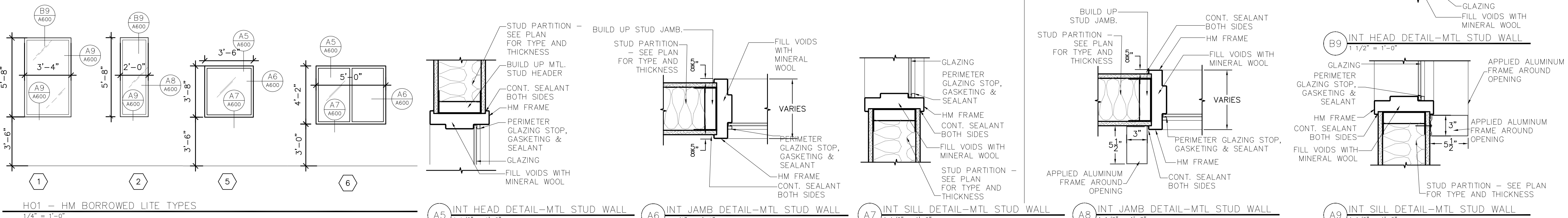
C1 DOOR HEAD-MTL. STUD WALL
C2 DOOR HEAD-MTL. STUD WALL
C3 DOOR HEAD-EXIST GLAZED BLOCK WALL
C4 DOOR HEAD-EXIST CMU WALL
C5 DOOR JAMB - EXIST CMU WALL



B1 DOOR JAMB-MTL. STUD WALL
B2 DOOR JAMB-MTL. STUD WALL
B3 DOOR JAMB-EXIST GLAZED BLOCK WALL
B4 DOOR JAMB-EXIST GLAZED BLOCK WALL
B5 DOOR JAMB-EXIST GLAZED BLOCK WALL

HOLLOW METAL BORROWED LITE SCHEDULE

Room #	Room Name	UNUM Tag	Location	Quantity	Mat'l	Type	Head Dim.	Label	Type	Rating	Sill Height	Accessories/Notes:
125	Security	1D-99	South Wall	2	HM	5	2"	3/4 HR	2A3-1	1 HR	3'-0"	
146	Credit Union	11-CU	North Wall	1	HM	6	2"	3/4 HR	2A3-1	1 HR	3'-0"	
214	Elev Lobby	2E-EVL	West wall	2	HM	1	2"	3/4 HR	2A6-1	1 HR	3'-0"	
214	Elev Lobby	2E-EVL	West wall	2	HM	2	2"	3/4 HR	2A6-1	1 HR	3'-0"	
220	Elev Lobby	2D-EVL	East Wall	2	HM	1	2"	3/4 HR	2A6-1	1 HR	3'-0"	
220	Elev Lobby	2D-EVL	East Wall	2	HM	2	2"	3/4 HR	2A6-1	1 HR	3'-0"	
314	Elev Lobby	3E-EVL	West wall	2	HM	1	2"	1 HR	2A6-1	1 HR	3'-0"	
314	Elev Lobby	3E-EVL	West wall	2	HM	2	2"	1 HR	2A6-1	1 HR	3'-0"	
320	Elev Lobby	3D-EVL	East Wall	2	HM	1	2"	1 HR	2A6-1	1 HR	3'-0"	
320	Elev Lobby	3D-EVL	East Wall	2	HM	2	2"	1 HR	2A6-1	1 HR	3'-0"	



H01 - HM BORROWED LITE TYPES
A5 INT HEAD DETAIL-MTL STUD WALL
A6 INT JAMB DETAIL-MTL STUD WALL
A7 INT SILL DETAIL-MTL STUD WALL
A8 INT JAMB DETAIL-MTL STUD WALL
A9 INT SILL DETAIL-MTL STUD WALL

HM DOOR SCHEDULE

HM DOOR SCHEDULE		DOOR				FRAME				WALL															
Door #	Room Name	UNUM Tag	Classification	Type	Mat'l	Size	Label	Mat'l	Type	Head Dim.	Head Detail #	Jamb Detail #	Label	Existing Opening	Type	Rating	Threshold	Access Controls	Hardware Set	Crash Bar	Hold Open	Auto Opener	Accessories/Notes:		
BASEMENT																									
B01A	Training	BC-99	Classroom	A2	HM	42x84	339	HM	1	2"	C1	B1			2B3-S				2					Reuse salvaged door and frame.	
B01B	Storage	BC-ST	Storeroom	A	HM	36x84		HM	1	2"	C1	B1			2B3-S				1						
B01C	Web Ex	BC-WE	Classroom	A2	HM	36x84	339	HM	1	2"	C1	B1			2A3				2						
FIRST FLOOR																									
107	Dining	1J-SC	Egress	B	HM	36x108 (2)	1 HR	HM	1	2"	C1	B1	1 HR		2A3-1	1 HR	x		3	x	x	x			
112.1	Elev Lobby	1E-EVL2	Passage	B	HM	32x98 (2) FV	1 HR	HM	1	4"	F3/A500	B3	1 HR	x	Exist Block	1 HR	x		4	x		x			
112.2	Elev Lobby	1E-EVL2	Passage	B	HM	36x98 (2) FV	1 HR	HM	1	4"	F3/A500	B5	1 HR	x	Exist Block	1 HR	x		4	x		x			
113	Janitor	1E-J1	Storeroom	A	HM	36x84 FV	1 HR	HM	1	2"	C1	B1	1 HR		2A3-1	1 HR			5	x				Reuse salvaged lockset	
118	Tele	1E-TE	Storeroom	A	HM	36x84		HM	1	2"	C1	B1			Existing	1 HR			6	x				Reuse salvaged lockset	
119	Women	1E-WM	Storeroom	A	HM	40x84	1 HR	HM	1	2"	C1	B1	1 HR		2A3-1	1 HR			7	x				Existing Operator Relocated	
120	Large Meeting	1E-1F	Classroom	A2	HM	36x84	1 HR	339	HM	1	2"	C1	B1	1 HR	x	Existing	1 HR	x		8	x				Existing Operator
E2	Stair E	1E-ST3	Egress	Install Only	HM	40x84	1-1/2 HR	HM	Install Only		F2/A500	F1/A500	1-1/2 HR	x	Existing	2 HR	x		9	x	x			DOOR AND FRAME INSTALL	
E1	Stair E	1E-ST3	Gate	C	HM	32x30		NA	NA	NA	D2/A501				NA				10	x		x			
121.1	Elev Lobby	1E-EVL	Egress	A	HM	36x84	1 HR	HM	1	2"	C1	B1	1 HR		2A3-1	1 HR			11	x	x				
122	Int. Room	1E-I2	Classroom	A2	HM	36x84	1 HR	339	HM	1	2"	C1	B1	1 HR	x	Existing	1 HR	x		12	x				
123	Int. Room	1E-I1	Classroom	A2	HM	36x84	1 HR	339	HM	1	2"	C1	B1	1 HR	x	Existing	1 HR	x		12	x				
125	Security	1D-99	Classroom	A2	HM	36x84	1 HR	339	HM	1	2"	C1	B1	1 HR	x	Existing	1 HR	x		12	x				
126	Meeting Room	1D-1P	Classroom	A2	HM	36x84	1 HR	339	HM	1	2"	C1	B1	1 HR	x	Existing	1 HR	x		13	x				Reuse salvaged lockset
127.1	Elev Lobby	1D-EVL	Egress	A	HM	36x84	1 HR	HM	1	2"	C1	B1	1 HR		2A3-1	1 HR			11	x	x				
D2	Stair D	1D-ST2	Gate	C	HM	40x84	1-1/2 HR	HM	Install Only		F2/A500	F1/A500	1-1/2 HR	x	Existing	2 HR	x		9	x	x				
129	Men	1D-MN	Passage	A	HM	40x84	1 HR	HM	1	2"	C1	B1	1 HR		2A3-1	1 HR			7	x				Existing Operator Relocated	
130	Tele	1D-TE	Storeroom	A	HM	36x84		HM	1	2"	C1	B1			Existing	1 HR			6	x				Reuse salvaged lockset	
131A	Shaft Access	1D-SA	Storeroom	A	HM	36x84	2 HR	HM	1	4"	C3	B4	2 HR		Existing	2 HR	x		14	x					
135.1	Open Office	1C-00	Passage	A2	HM	36x84	1 HR	339	HM	1	2"	C1	B1	1 HR	x	Existing	1 HR	x		15	x	x			
135.2	Open Office	1C-00	Passage	B	HM	36x108 (2)	1 HR	HM	1	2"	C3	B3	1 HR		2A3-1	1 HR	x		16	x	x	x			
141	Meeting Room	1H-2H	Classroom	A2	HM	36x84	1 HR	339	HM	1	2"	C1	B1	1 HR		2A3-1	1 HR		12	x	x				
141A	Web Ex	1H-WE	Classroom	A2	HM	36x84	339	HM	1	2"	C1	B1			Existing	x			17						
141B	Web Ex	1H-WE2	Classroom	A2	HM	36x84	339	HM	1	2"	C1	B1			Existing	x			17						
143	Elev Room	1H-EVR	Storeroom	A3	HM	36x84	1 HR	HM	1A	2"	C2	B2	1 HR	x	Existing	1 HR	x		18	x				*Review Frame. Door to have veneer finish (match existing)	
143A	Elev Room	1H-EVR	Storeroom	A	HM	36x84	1 HR	HM	1	2"	C1	B1	1 HR	x	Existing	1 HR			18						
146	Credit Union	11-CR	Secure	A1	HM	36x84	1 HR	1240	HM	1	2"	C1	B1	1 HR	x	Existing	1 HR	x		19	x				Card access. Review switching.
147	Meeting Room	11-B	Classroom	A2	HM	36x84	339	HM	1	2"	C1	B1			Existing	x			20					Reuse salvaged lockset	
148	Meeting Room	11-D	Classroom	A2	HM	36x84	339	HM	1	2"	C1	B1			2A3				20					Reuse salvaged lockset	
149	Meeting Room	11-C	Classroom	A2	HM	36x84	339	HM	1	2"	C1	B1			2A3				20					Reuse salvaged lockset	
179	Security Annex	1D-SA	Classroom	A2	HM	36x84	1 HR	339	HM	1	2"	C1	B1	1 HR	x	Existing	1 HR	x		21	x				
179A	Security Closet	1D-SC	Storeroom	A	HM	36x84		HM	1	2"	C1	B1			2A3				22						
SECOND FLOOR																									
210	Elev Lobby	2E-EVL2	Passage	B	HM	32x94 (2) FV	1 HR	HM	1	4"	F3/A500	B4	1 HR	x	Existing Block	1 HR	x		4	x		x			
211	Janitor	2E-JA	Storeroom	A	HM	36x94 FV	1 HR	HM	1	4"	C3	B5	1 HR	x	Existing Block	1 HR			5	x				Reuse salvaged lockset	
213	Women	2E-WM	Passage	A	HM	40x84		HM	1	2"	F3/A500	B1			Existing	x			7A	x					
E3	Stair E	2E-ST3	Egress	Install Only	HM	40x84	1-1/2 HR	HM	Install Only		F2/A500	F1/A500	1-1/2 HR	x	Existing	2 HR	x		9	x				DOOR AND FRAME INSTALL	
214.1	Elev Lobby	2E-EVL	Passage	A	HM	44x108	1 HR	HM	1	2"	C1	B1	1 HR		2A3-1	1 HR			23	x	x	x			
214.2	Elev Lobby	2E-EVL	Passage	A	HM	44x108	1 HR	HM	1	2"	C1	B1	1 HR		2A3-1	1 HR			23	x	x	x			
216	Tele	2E-TE	Storeroom	A	HM	36x84		HM	1	2"	C1	B1			Existing	x			6A	x					
220.1	Elev Lobby	2D-EVL	Passage	A	HM	44x108	1 HR	HM	1	2"	C1	B1	1 HR		2A3-1	1 HR			23	x	x	x			
220.2	Elev Lobby	2D-EVL	Passage	A	HM	44x108	1 HR	HM	1	2"	C1	B1	1 HR		2A3-1	1 HR			23	x	x	x			
221	Men	2D-MN	Passage	A	HM	40x84		HM	1	2"	F3/A500	B1			Existing	x			7A	x					
225	Tele	2D-TE	Storeroom	A	HM	36x84		HM	1	2"	C1	B1			Existing	x			6	x					
D3	Stair D	2D-ST3	Egress	Install Only	HM	40x84	1-1/2 HR	HM	Install Only		F2/A500	F1/A500	1-1/2 HR	x	Existing	2 HR	x		9	x				DOOR AND FRAME INSTALL	
260	Open Office	2B-00	Passage	B	HM	36x84 (2)	1 HR																		