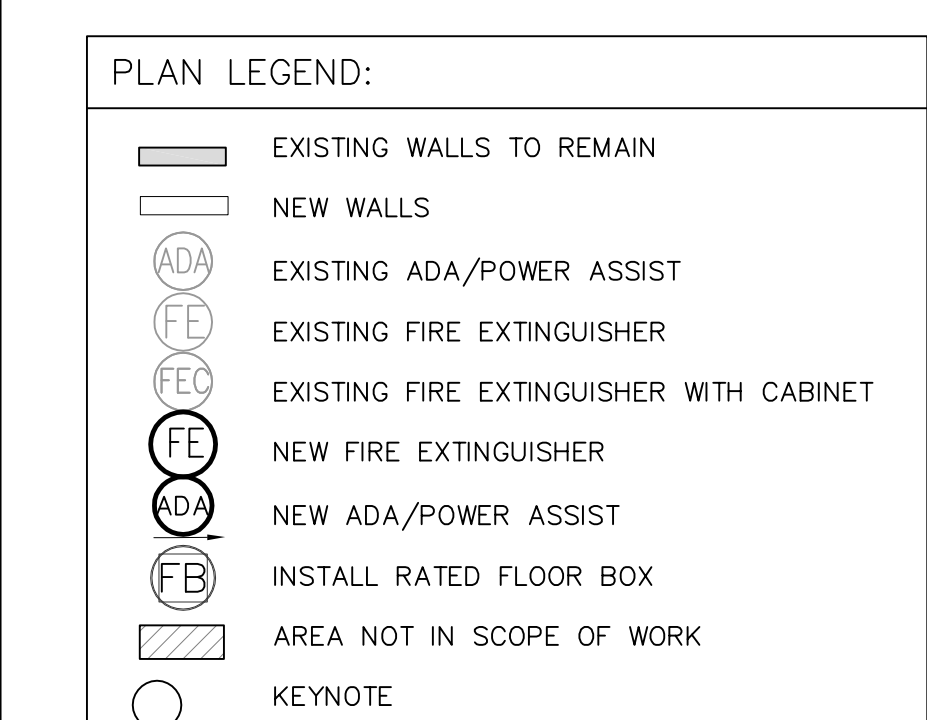


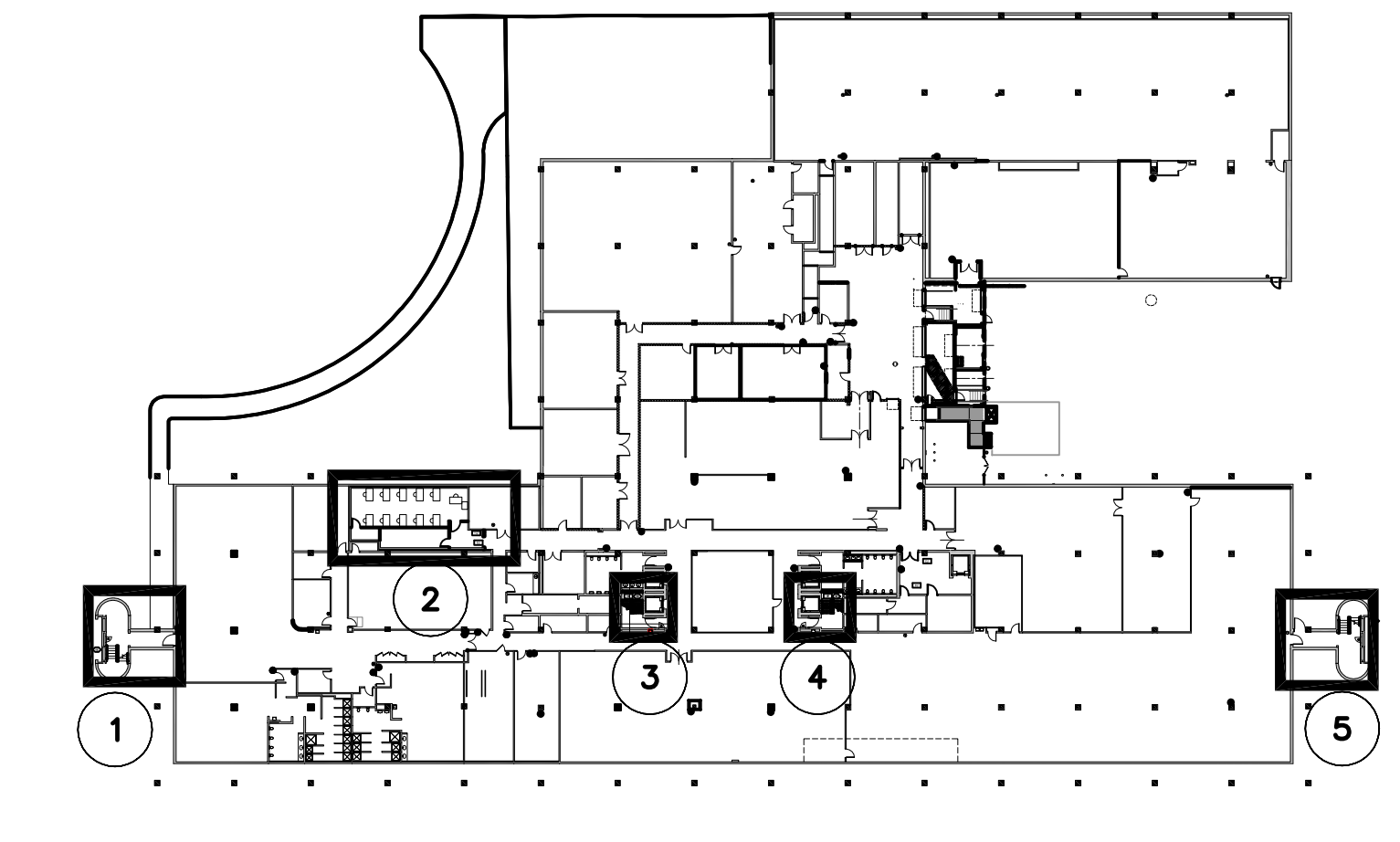
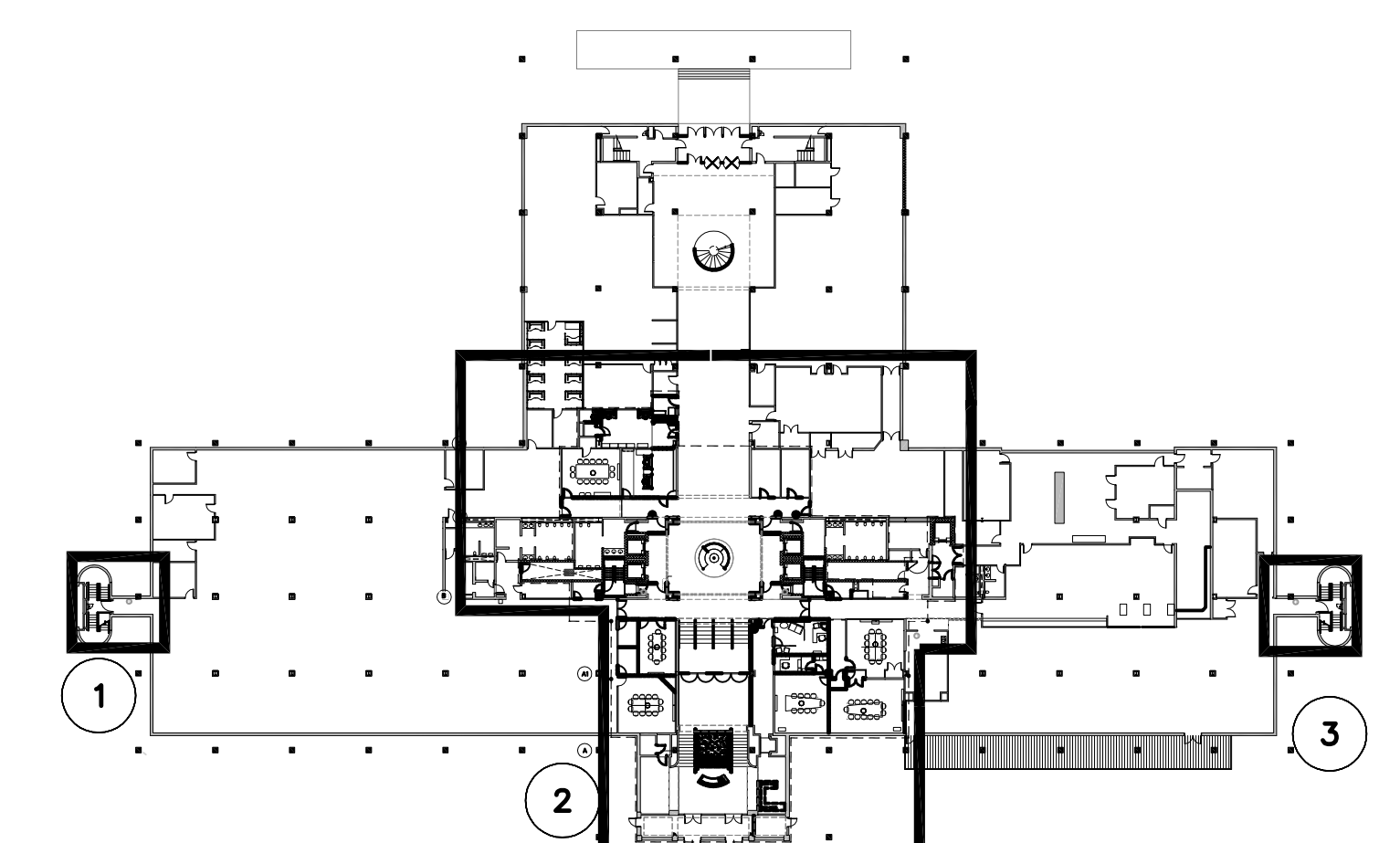
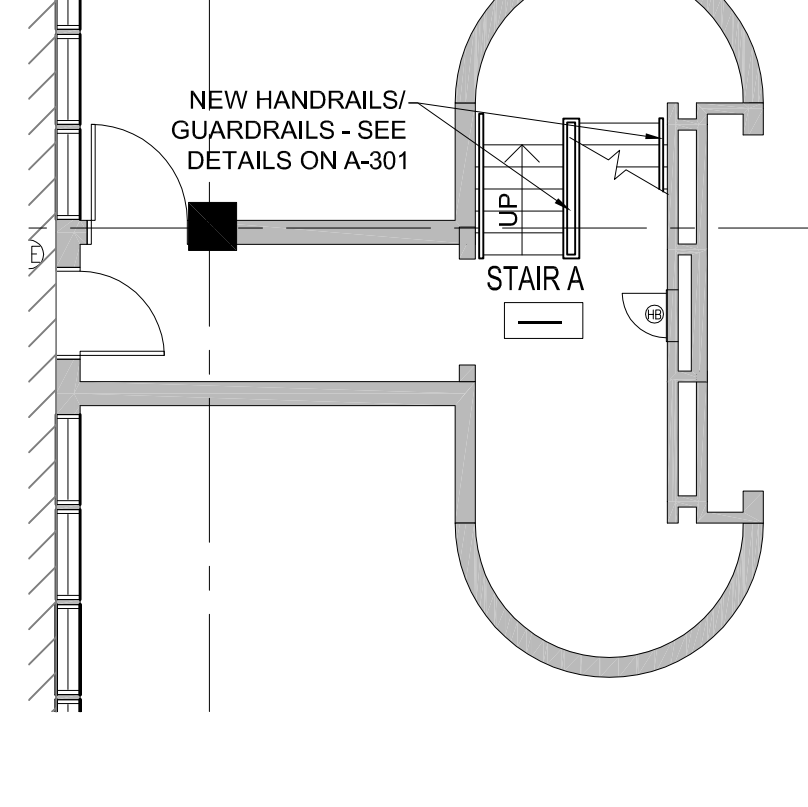
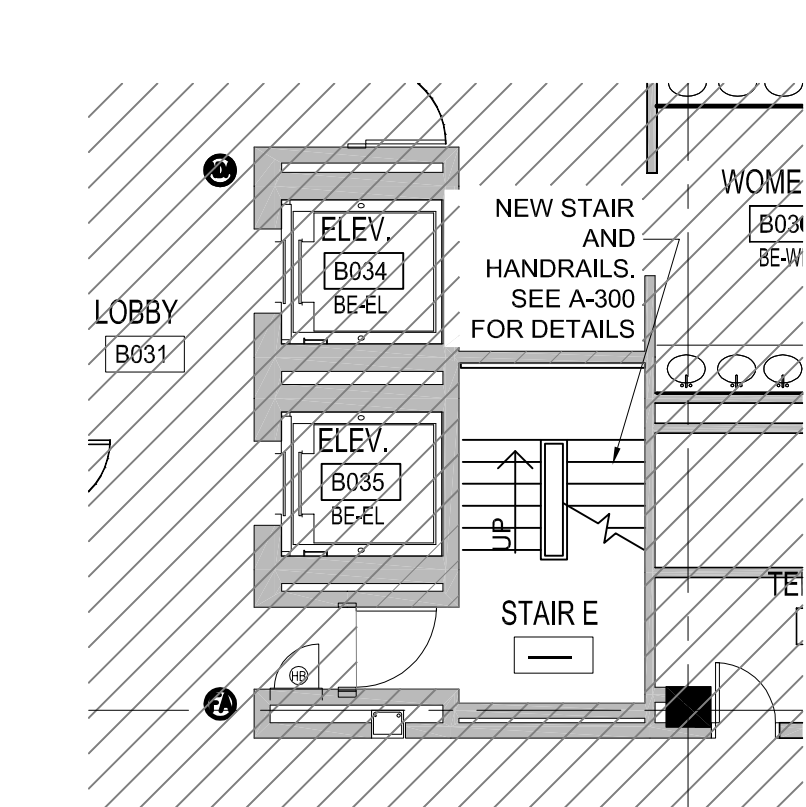
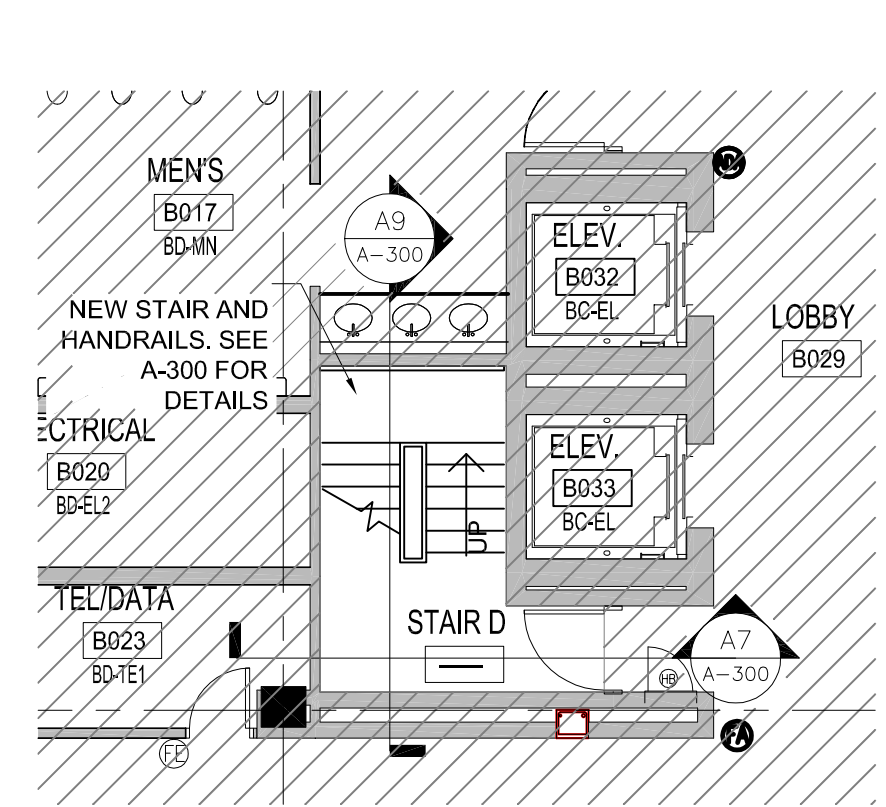
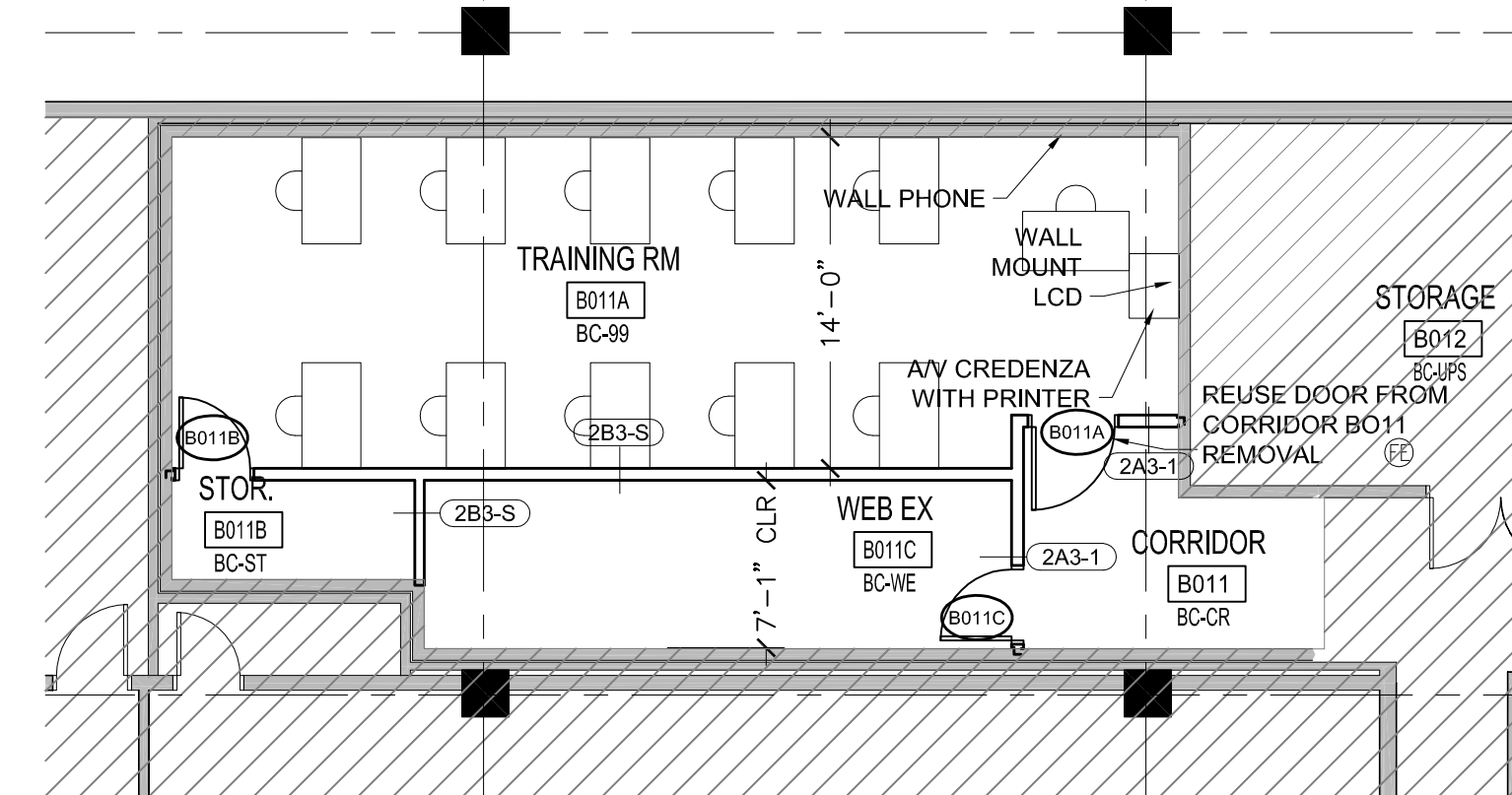
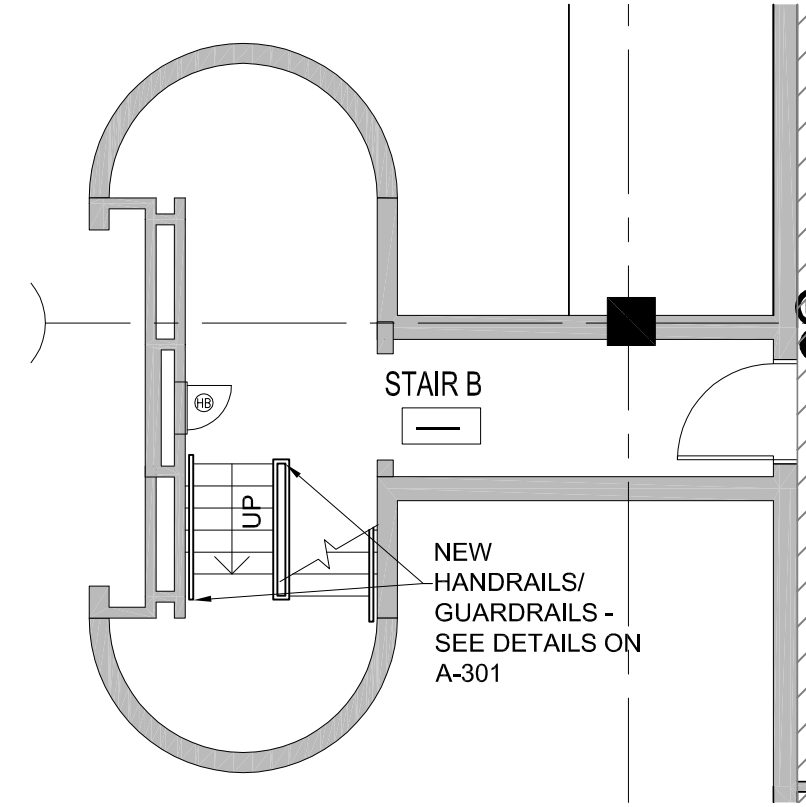
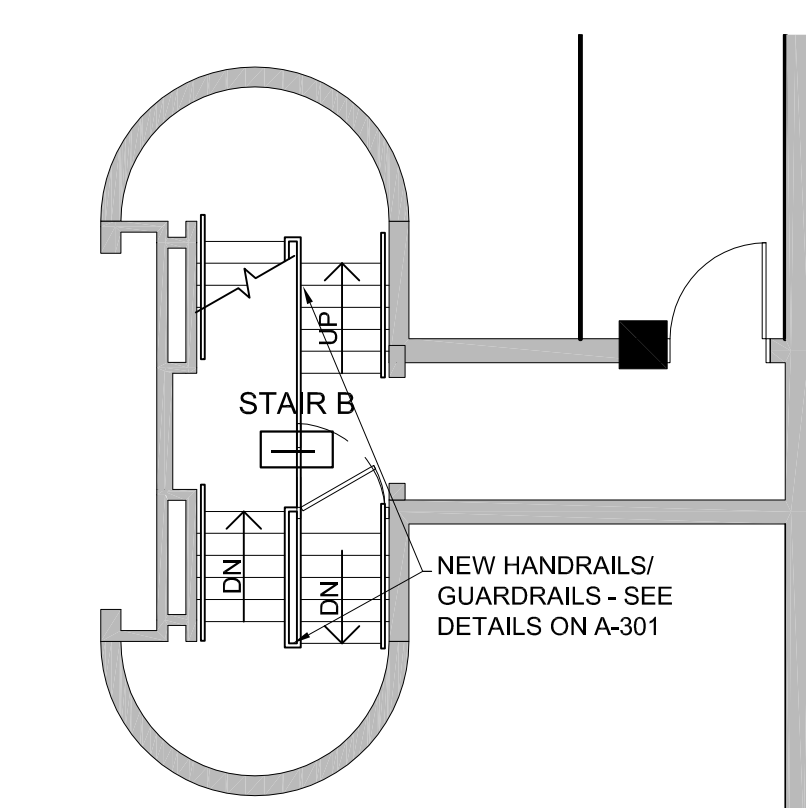
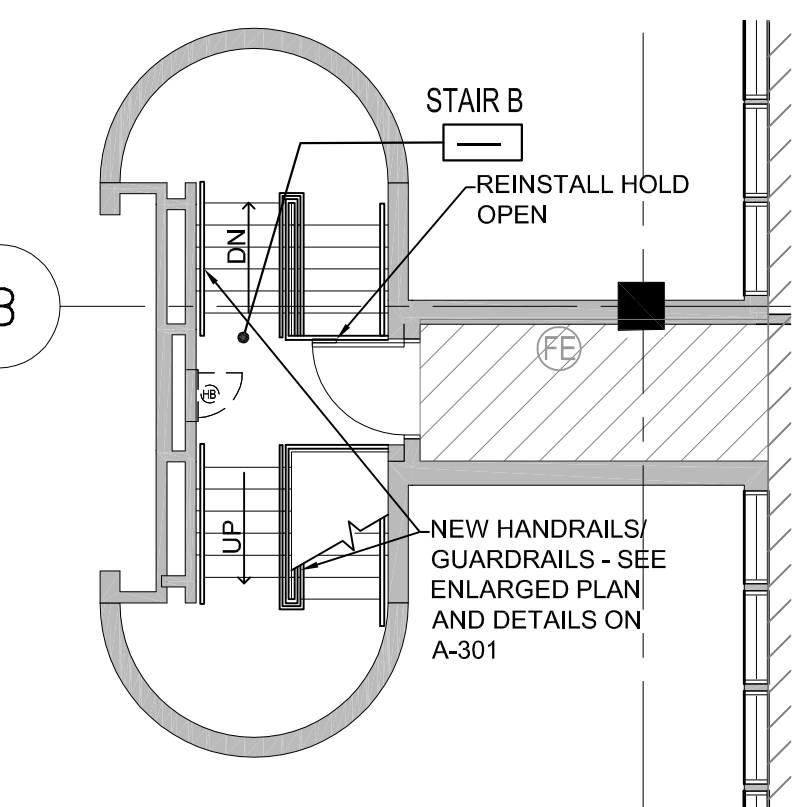
1. PATCH AND REPAIR ALL EXISTING WALLS, FLOORS, CEILINGS, AND FINISHES AFFECTED OR DAMAGED BY TEMPORARY PARTITION REMOVAL. NOT ALL AREAS HAVE BEEN INDICATED ON PLAN. SEE TEMPORARY PARTITION LAYOUTS FOR AREAS OF IMPACT.
2. SEE CODE PLANS FOR LOCATIONS OF RATED WALLS AND ENSURE ALL EXISTING WALLS IN THOSE LOCATIONS EXTEND TO DECK AND ALL PENETRATIONS ARE PROPERLY FIRESTOPPED.
3. SOME OF THE NEW WORK MAY BE AFFECTED BY PREVIOUS ABATEMENT WORK. CONFIRM ANY DISCREPANCIES WITH ARCHITECT PRIOR TO PROCEEDING WITH WORK.
4. SEE PHASING PLANS FOR SEQUENCE OF WORK AND TEMPORARY PARTITION LOCATIONS.
5. WALL INFILLS MARKED WITH WALL TYPE. IF INDICATED TYPE DOES NOT MATCH EXISTING THICKNESS, MODIFY TO MATCH. SEE A500 FOR WALL INFILL DETAILS.
6. ABANDONED FLOOR BOXES SHALL BE REMOVED. STEEL PLATE AT DECK BELOW AND FILLED W/ CONCRETE.



- PLAN KEY NOTES:**
- 1 NEW STAIR LANDINGS AND HANDRAILS. SEE A300 FOR ENLARGED PLANS AND DETAILS.
 - 2 INFILL WALL OPENING AT CHUTE WITH FIRE RATED SYSTEM. SEE DETAIL A3/A500.
 - 3 REBUILD / EXTEND EXISTING WALL TO DECK ABOVE AND FIRESTOP ALL PENETRATIONS TO MATCH REQUIRED RATING AS APPLICABLE. SEE CODE PLANS FOR ALL RATED WALL LOCATIONS.
 - 4 NEW HANDRAILS AT EXISTING RAILINGS. SEE DETAIL ON A501.
 - 5 NEW WALL FINISHES AT ELEVATOR LOBBY. SEE ELEVATIONS.
 - 6 NEW CARPETING
 - 7 PATCH AND REPAIR WALL AT WALL CLOCK REMOVAL.
 - 8 PATCH AND REPAIR WALL AT FIRE ALARM REMOVAL.

Wednesday, October 8, 2014 11:40:24 AM CHELSEA LIPHAM

H:\MASTER PROJ FILES\UNUM 201410 WORKING FILES\02 ARCHITECTURAL\UNUM CAD\SHEETS\PLANS - BASEMENT AND 1ST.DWG



PDT ARCHITECTS
49 DARTMOUTH STREET
PORTLAND, MAINE 04101
207-775-1099
www.pdtarch.com

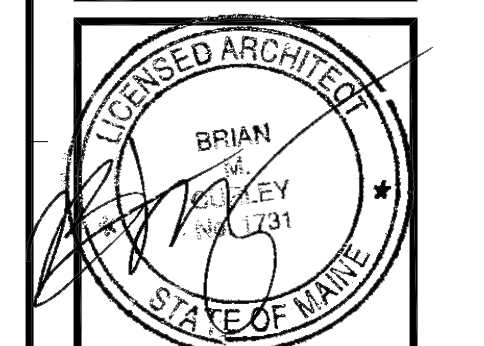
Allied Engineering
Structural Mechanical
Electrical Commissioning

160 Veranda Street
Portland, Maine 04103
Tel: 207.221.2260
Fax: 207.221.2266
Web: www.allied-eng.com

allied Project No:
CAD File:

COPYRIGHT 2014
PDT Architects
Reuse or reproduction of the contents of this document is prohibited without the permission of PDT Architects.

2014 UNUM - HOI Interior Renovations
PORTLAND, MAINE



PDT JOB NO.
13-096

DRAWN
CLL

SCALE
1/8" = 1'-0"

ISSUE: 2 Oct 2014
PERMIT SET

TITLE
BASEMENT/ 1ST FL
ENLARGED PLANS

SHEET

A111