

RESERVED FOR CITY OF PORTLAND

**International Building Code and Life Safety Code Summary**

**EDITIONS REFERENCED**  
 International Building Code 2009  
 NFPA 101 - Life Safety Code 2009

**GENERAL DESCRIPTION OF WORK**  
 Total 2nd floor area: 67,719 sf  
 Approximate area of renovation: 4,416 sf  
 Construction types: Type Ila non-combustible, protected

**OCCUPANCY**  
 The predominant occupancy of the building is Offices. The building also includes assembly and storage occupancies. Assembly spaces intended exclusively for use by employees as part of their training and meeting functions.

**FIRE RESISTANCE**  
 - 2-hr separations at Exit Stairs and Shafts  
 - 1-hr separations at Elevator Lobbies and Light Well  
 - Doors shall be self closing at barriers.

**EGRESS COMPONENTS**  
 - Stairs in the existing building are enclosed with existing concrete construction.  
 - Maximum Dead-End Corridor = 50'  
 - Maximum Travel Distance = 200'  
 - Egress width per person = 0.3" @ stairs, 0.2" @ horizontal exits

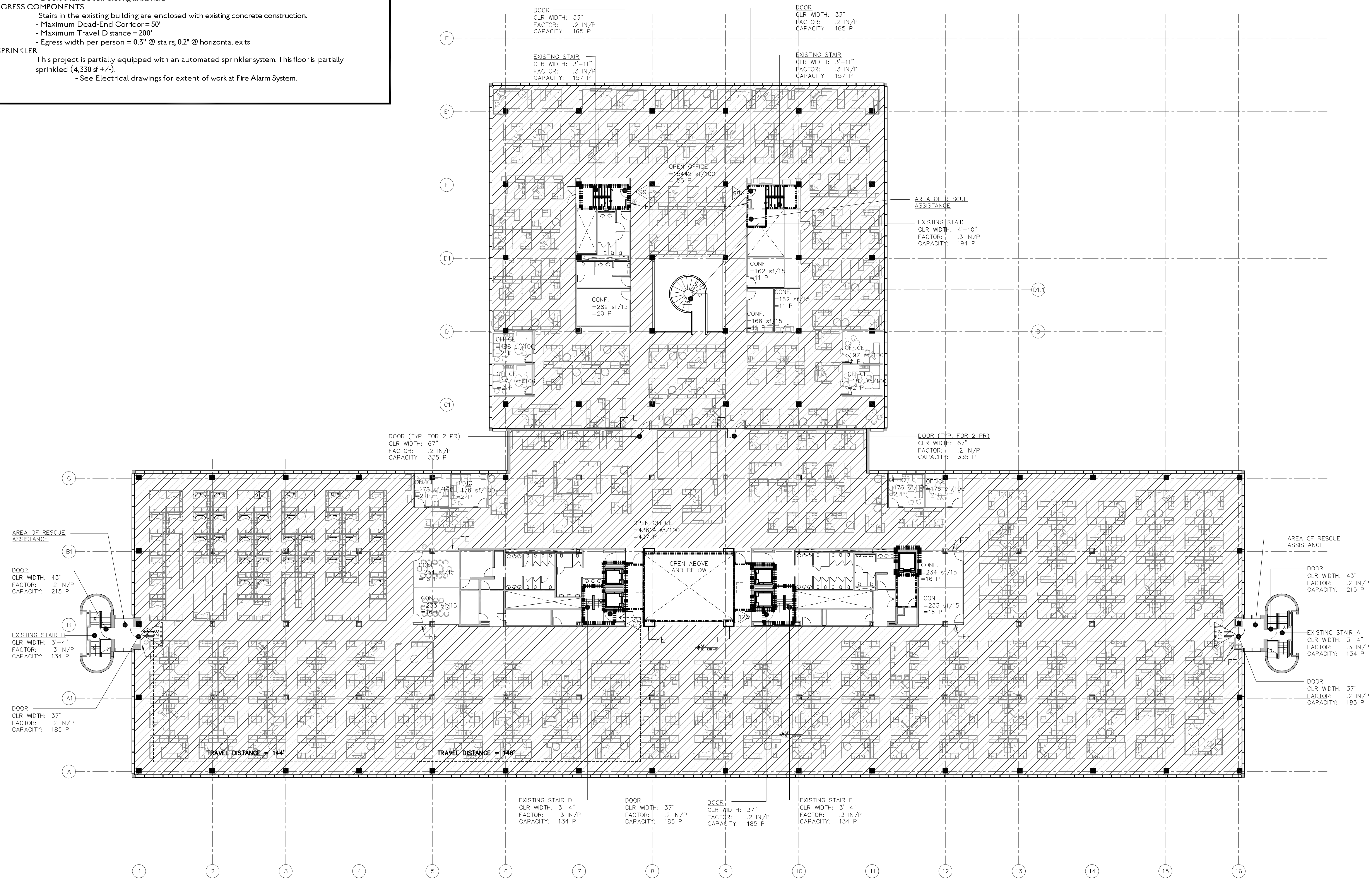
**SPRINKLER**  
 This project is partially equipped with an automated sprinkler system. This floor is partially sprinkled (4,330 sf +/-).  
 - See Electrical drawings for extent of work at Fire Alarm System.

**GRAPHIC LEGEND:**

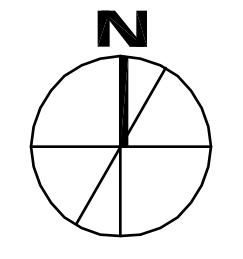
- Occupant Load
- Cumulative Occupant Load
- 1-hour Fire/Smoke Separation
- 2-hour Fire/Smoke Separation
- Open Office Area

Thursday, October 2, 2014 10:13:11 AM CHELSEA LIPHAM

H:\MASTER PROJ FILES\2A\UNUM 2014\10 WORKING FILES\02 ARCHITECTURAL\UNUM CAD\SHEETS\UNUM\_HOI-CODE PLAN\_SECOND.DWG



1 HOI-SECOND FLOOR CODE DIAGRAM  
1/16" = 1'-0"



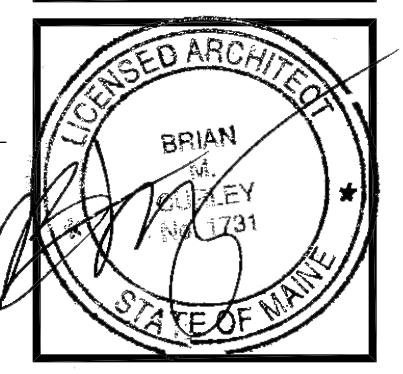
**PDT ARCHITECTS**  
 49 DARTMOUTH STREET  
 PORTLAND, MAINE 04101  
 207-775-1099  
 www.pdtarch.com

**Allied Engineering**  
 Structural Mechanical  
 Electrical Commissioning  
 160 Veranda Street  
 Portland, Maine 04103  
 T: 207-221-2260  
 F: 207-221-2266  
 Web: www.allied-eng.com

allied Project No:  
 CAD File:

**COPYRIGHT 2014**  
 PDT Architects  
 Reuse or reproduction of the contents of this document is prohibited without written permission of PDT Architects.

**2014 UNUM - HOI Interior Renovations**  
 PORTLAND, MAINE



PDT JOB NO. 13-096

DRAWN JKP

SCALE 1/16" = 1'-0"

ISSUE: 2 Oct 2014 PERMIT SET

TITLE HOI-SECOND FLR. CODE DIAGRAMS

SHEET

A-003