

**International Building Code and Life Safety Code Summary**

**EDITIONS REFERENCED**  
 International Building Code 2009  
 NFPA 101 - Life Safety Code 2009

**GENERAL DESCRIPTION OF WORK**  
 Total basement floor area: 75,920 sf  
 Approximate area of renovation: 1,163 sf  
 Building footprint: 92,289 sf - see "IBC Floor Area" note below  
 Construction types: Type IIa non-combustible, protected





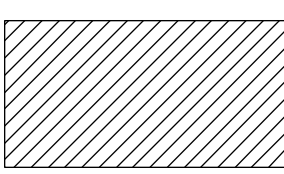
**OCCUPANCY**  
 The primary occupancy of the building is Offices. The building also includes assembly and storage occupancies. Assembly spaces intended exclusively for use by employees as part of their training and meeting functions (assembly use).

**FIRE RESISTANCE**  
 - 1-hr separations at Corridors, Exits, Shafts, Assembly Uses and incidental areas, including Kitchens and Storage areas greater than 100sf.  
 - Fire Windows allowed in 1-hr or lower rated walls, except at stairs. Area of glazing shall be less than or equal to 25% of the area of the barrier.  
 - Doors shall be self closing at barriers. This project adds closers at most existing corridor-to-office/conference doors.  
 - Top of wall condition at existing corridors will be upgraded to meet 1-hr fire rating at areas of renovation.

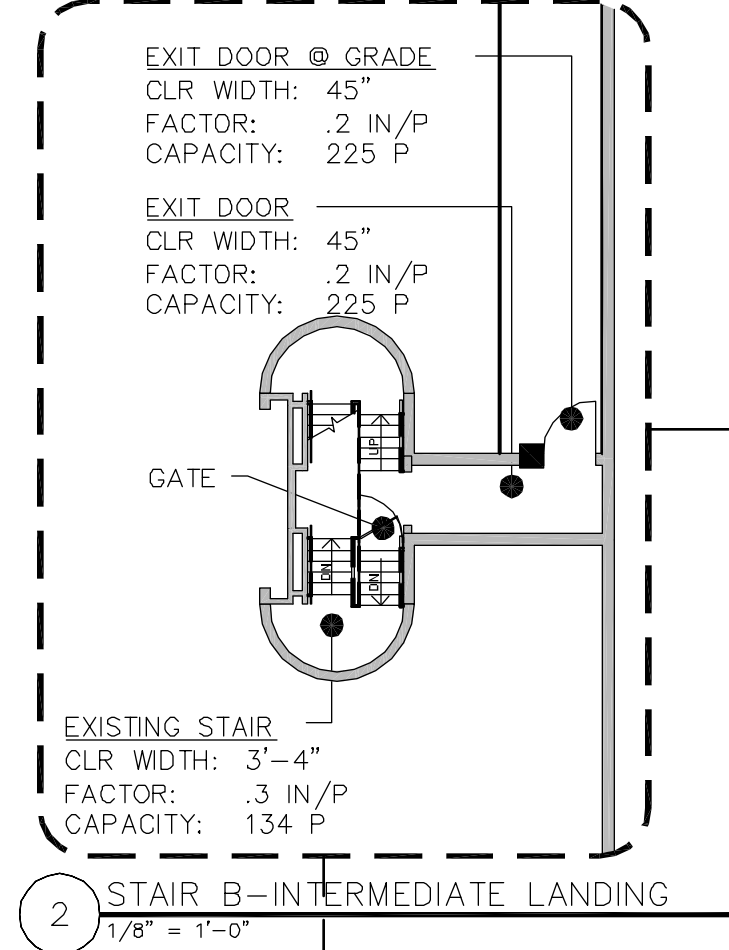
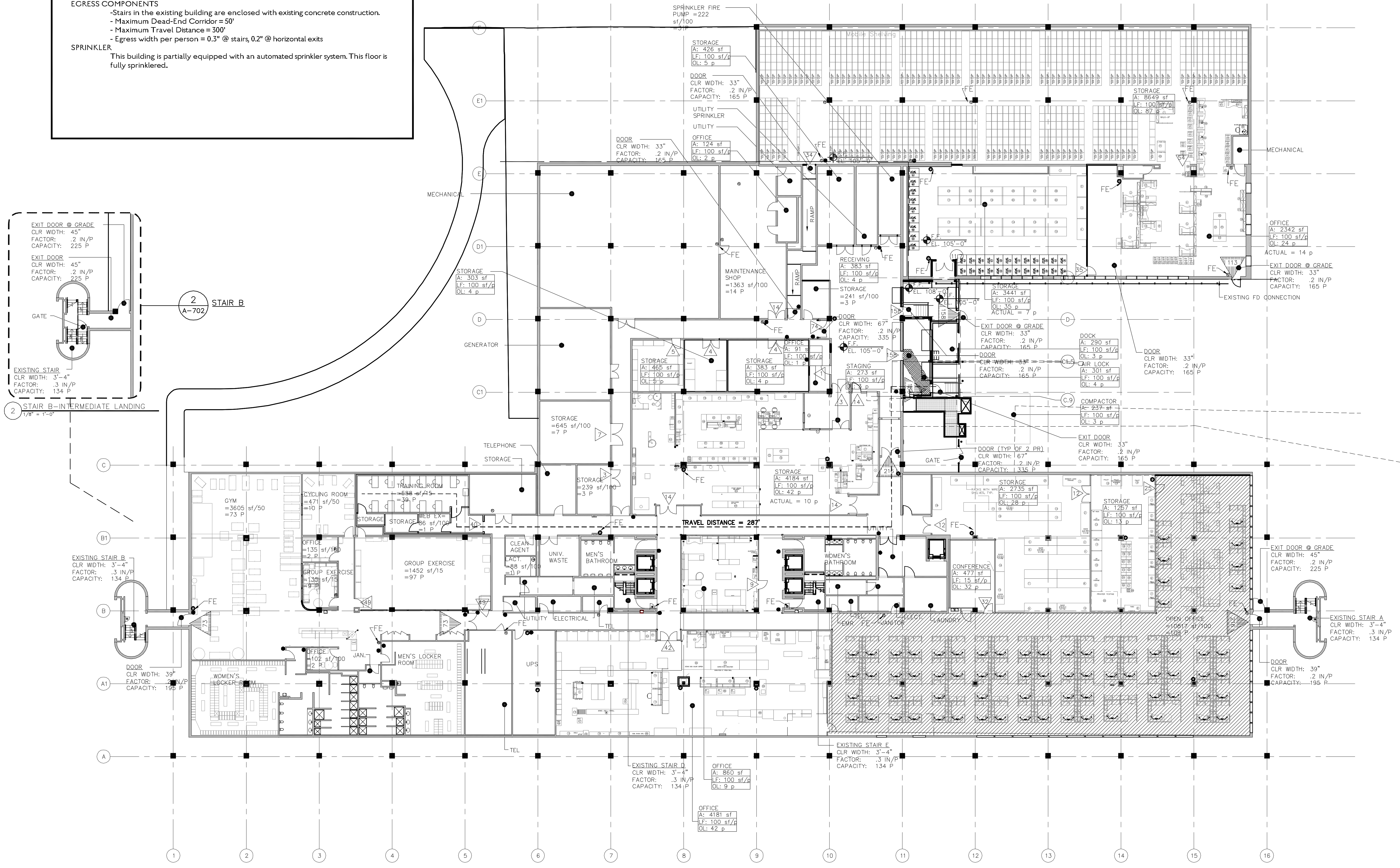
**EGRESS COMPONENTS**  
 - Stairs in the existing building are enclosed with existing concrete construction.  
 - Maximum Dead-End Corridor = 50'  
 - Maximum Travel Distance = 300'  
 - Egress width per person = 0.3" @ stairs, 0.2" @ horizontal exits

**SPRINKLER**  
 This building is partially equipped with an automated sprinkler system. This floor is fully sprinklered.

**GRAPHIC LEGEND:**

-  Occupant Load
-  Cumulative Occupant Load
-  1-hour Fire/Smoke Partition
-  2-hour Fire/Smoke Partition
-  Open Office Area

Total Exit Capacity Basement Floor = 886 P



1 HOI-BASEMENT FLOOR CODE DIAGRAM  
 1/16" = 1'-0"



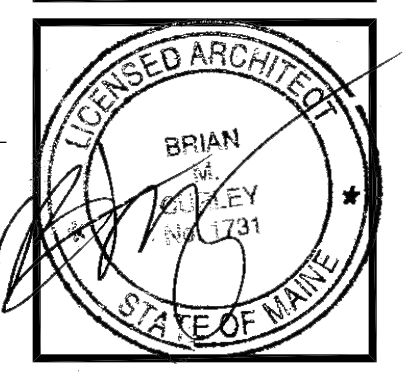
**Allied Engineering**  
 Structural Mechanical Electrical Commissioning

160 Veranda Street  
 Portland, Maine 04103  
 Tel: 207.221.2266  
 Fax: 207.221.2266  
 Web: www.allied-eng.com

Project No:  
 CAD File:

**COPYRIGHT 2014**  
 PDT Architects  
 Reuse or reproduction of the contents of this document is prohibited without the written permission of PDT Architects.

**2014 UNUM - HOI Interior Renovations**  
 PORTLAND, MAINE



PDT JOB NO. 13-096

DRAWN JKP

SCALE 1/16" = 1'-0"

ISSUE: 2 Oct 2014

PERMIT SET

TITLE HOI-BASEMENT FLOOR CODE DIAGRAMS

SHEET

A-001

Thursday, October 2, 2014 11:06:24 AM CHELSEA\_LPHAM

H:\MASTER PROJ FILES\2014\10 WORKING FILES\02 ARCHITECTURAL\UNUM CAD\SHETS\UNUM HOI-CODE PLAN\_GROUND.DWG