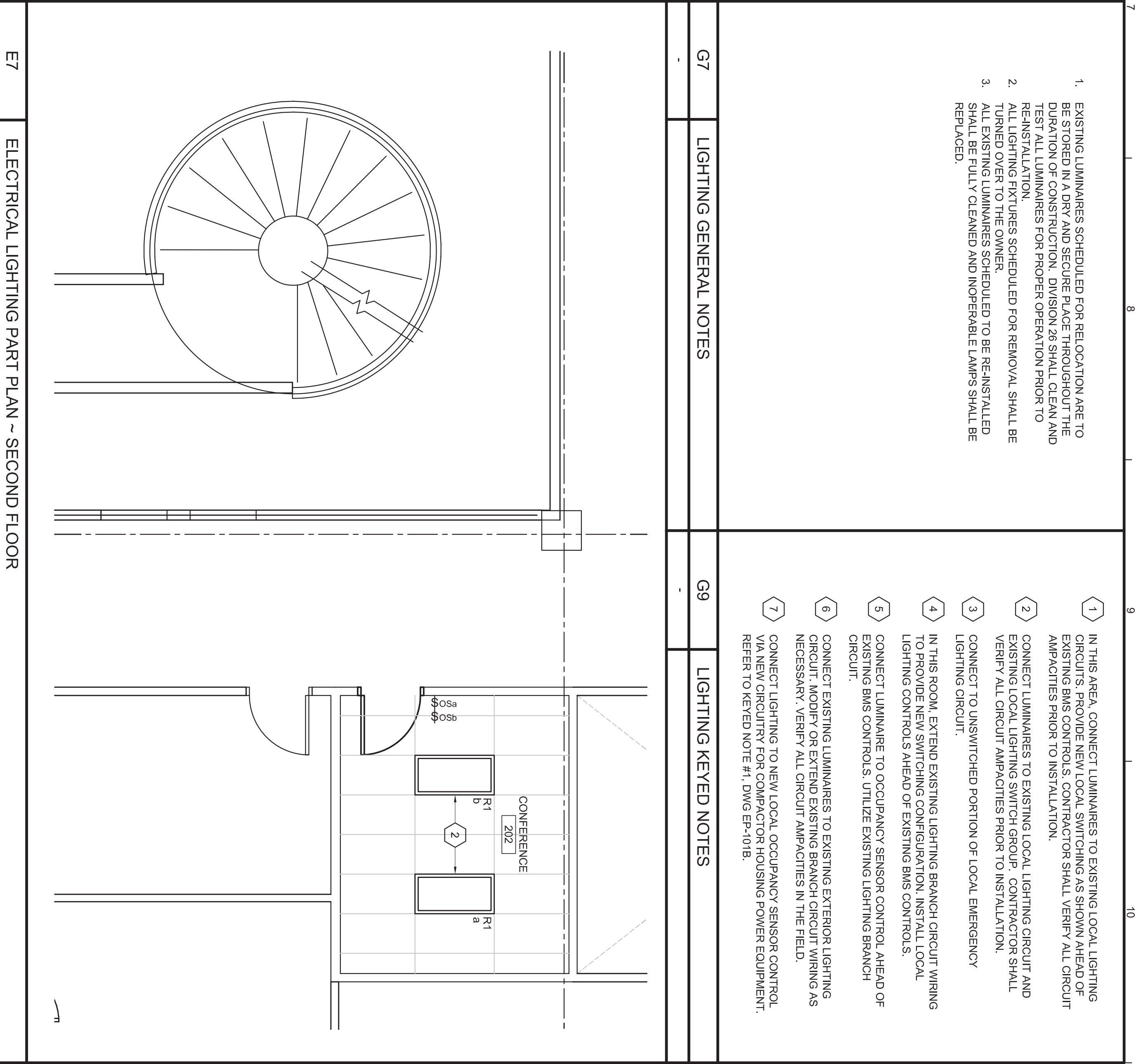
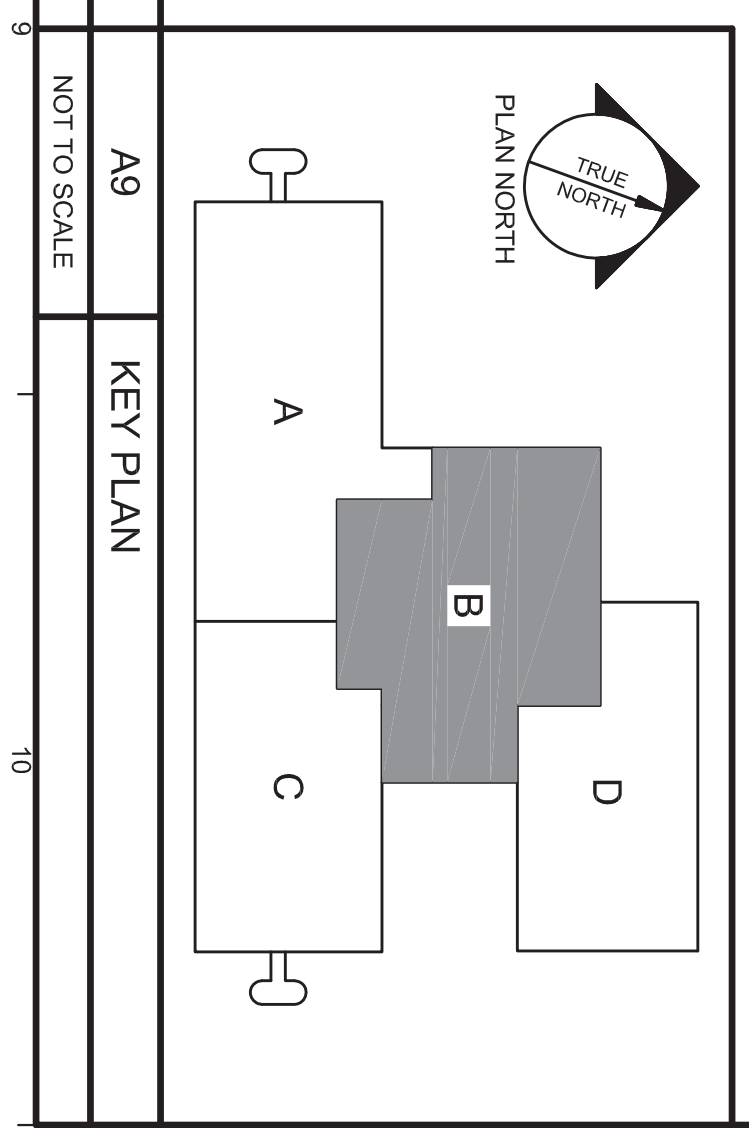


E7
1/4" = 1'-0"
ELECTRICAL LIGHTING PART PLAN - SECOND FLOOR



- | | | | |
|----|------------------------|----|----------------------|
| G7 | LIGHTING GENERAL NOTES | G9 | LIGHTING KEYED NOTES |
|----|------------------------|----|----------------------|
- EXISTING LUMINAIRES SCHEDULED FOR RELOCATION ARE TO BE REMOVED IN PREPARATION FOR RELOCATION. DIVISION 26 SHALL CLEAN AND TEST ALL LUMINAIRES FOR PROPER OPERATION PRIOR TO REINSTALLATION. LUMINAIRES SCHEDULED FOR REMOVAL SHALL BE TURNED OVER TO THE OWNER.
 - ALL EXISTING LUMINAIRES SCHEDULED TO BE REINSTALLED SHALL BE CLEANED AND IMPROPER LAMPS SHALL BE REPLACED.
 - IN THIS AREA, CONNECT LUMINAIRES TO EXISTING LOCAL LIGHTING CIRCUITS. VERIFY ALL CIRCUIT AMPACITIES PRIOR TO INSTALLATION.
 - CONNECT LUMINAIRE TO EXISTING LOCAL LIGHTING CIRCUIT AND VERIFY ALL CIRCUIT AMPACITIES PRIOR TO INSTALLATION.
 - CONNECT TO UNSWITCHED PORTION OF LOCAL EMERGENCY LIGHTING CIRCUIT.
 - IN THIS ROOM, EXTEND EXISTING LIGHTING BRANCH CIRCUIT WIRING TO OCCUPANCY SENSOR CONTROL AHEAD OF EXISTING BMS CONTROLS.
 - CONNECT LUMINAIRE TO EXISTING EXTERIOR LIGHTING CIRCUIT. VERIFY ALL CIRCUIT AMPACITIES IN THE FIELD.
 - CONNECT LIGHTING TO NEW LOCAL OCCUPANCY SENSOR CONTROL. VERIFY ALL CIRCUIT AMPACITIES IN THE FIELD. REFER TO KEYED NOTE #1, DWG EP-101B.



A9
NOT TO SCALE
KEY PLAN

<p>ARCHITECTS 49 BATHURST STREET PORTLAND, MAINE 04101 207.775.0899 www.allied-eng.com</p> <p>Allied Engineering Electrical Commissioning 161 Veranda Street Portland, Maine 04103 1-800-231-1260 www.allied-eng.com</p> <p>allied Project No. 12027 CADD FILE: 12027A.DWG COPYRIGHT 2013 PDI Architects PDI Architects 1307 21st Street Portland, Maine 04103 www.pdiarch.com</p>	<p>UNUM ~ HOI Basement & Dock Renovations PORTLAND, MAINE</p>	<p>SEAL STATE OF MAINE REGISTERED PROFESSIONAL ENGINEER ELECTRICAL NUMBER 12027 DATE 05/21/13 KATHLEEN A. FAUCHER N.E.B.</p>	<p>PLOT JOB NO. 12-124</p> <p>DRAWN N.L.B.</p> <p>SCALE AS NOTED</p> <p>ISSUE DATE 21 MAY 2013</p> <p>AS PER EXISTING REVISIONS</p>	<p>SHEET ELECTRICAL LIGHTING PART PLAN -AREA B EL-101B</p>
--	--	---	---	--