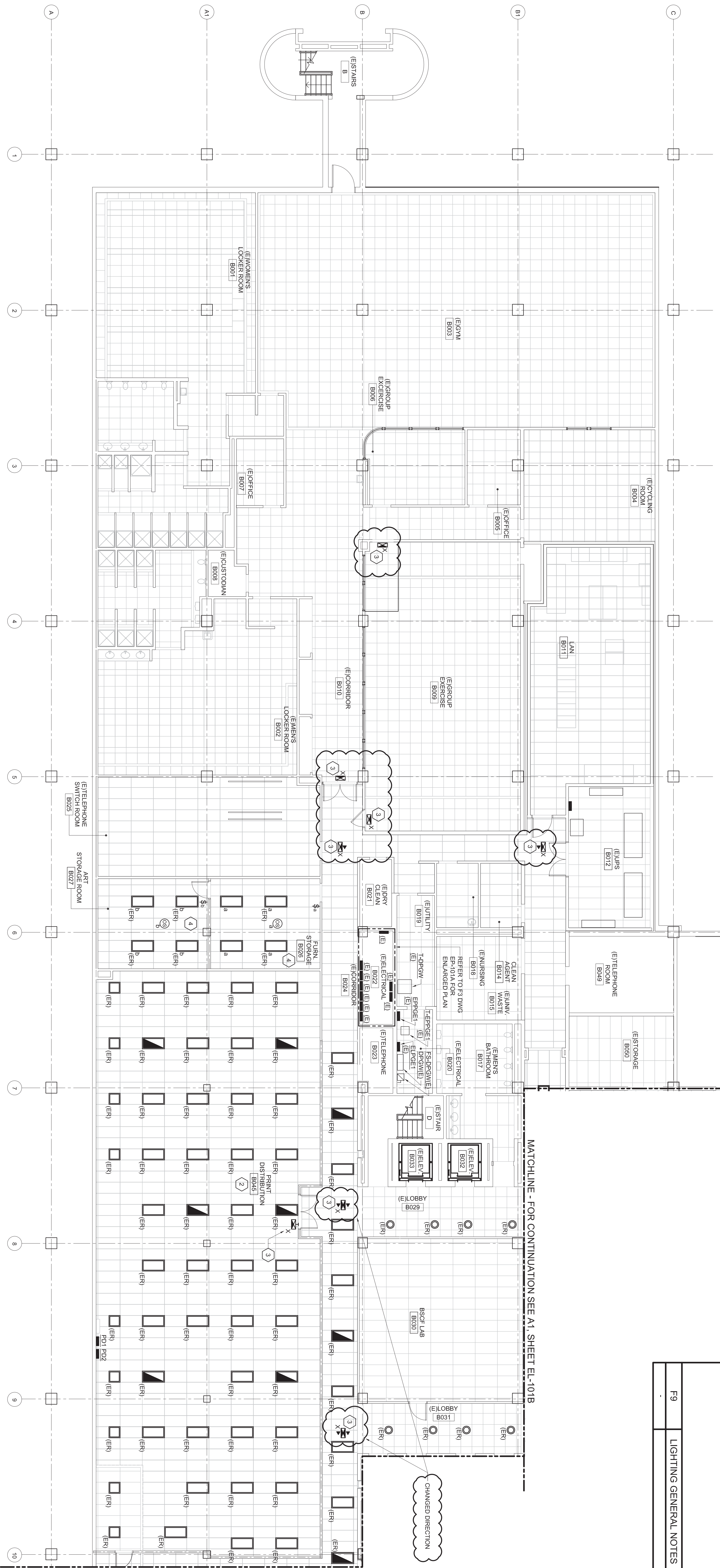


G1 ELECTRICAL PART PLAN ~ LEVEL 1



MATCHLINE - FOR CONTINUATION SEE A1, SHEET EL-101C

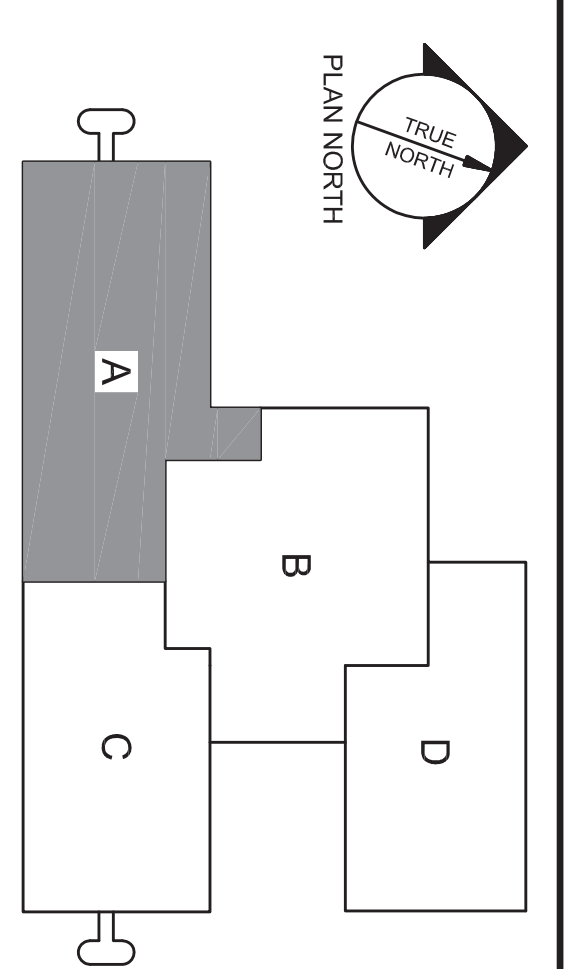
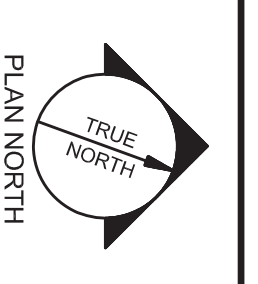
MATCHLINE - FOR CONTINUATION SEE A1, SHEET EL-101B

CHANGED DIRECTION

- G9 LIGHTING KEYED NOTES**
1. IN THIS AREA, CONNECT LUMINAIRES TO EXISTING LOCAL LIGHTING CIRCUITS. PROVIDE NEW LOCAL SWITCHING AS SHOWN AHEAD OF EXISTING BMS CONTROLS. CONTRACTOR SHALL VERIFY ALL CIRCUIT AMPACITIES PRIOR TO INSTALLATION.
  2. CONNECT LUMINAIRES TO EXISTING LOCAL LIGHTING CIRCUIT AND EXISTING LOCAL LIGHTING SWITCH GROUP. CONTRACTOR SHALL VERIFY ALL CIRCUIT AMPACITIES PRIOR TO INSTALLATION.
  3. CONNECT TO UNSWITCHED PORTION OF LOCAL EMERGENCY LIGHTING CIRCUIT.
  4. IN THIS ROOM, EXTEND EXISTING LIGHTING BRANCH CIRCUIT WIRING TO PROVIDE NEW SWITCHING CONFIGURATION. INSTALL ALL LOCAL LIGHTING CONTROLS AHEAD OF EXISTING BMS CONTROLS.
  5. CONNECT LUMINAIRE TO OCCUPANCY SENSOR CONTROL AHEAD OF EXISTING BMS CONTROLS. UTILIZE EXISTING LIGHTING BRANCH CIRCUIT.
  6. CONNECT EXISTING LUMINAIRE TO EXISTING EXTERIOR LIGHTING CIRCUIT. MODIFY OR EXTEND EXISTING BRANCH CIRCUIT WIRING AS NECESSARY. VERIFY ALL CIRCUIT AMPACITIES IN THE FIELD.
  7. CONNECT LIGHTING TO NEW LOCAL OCCUPANCY SENSOR CONTROL. VERIFY ALL CIRCUIT AMPACITIES FOR HOUSING POWER EQUIPMENT. REFER TO KEYED NOTE #1, DWG E-101B.

**F9 LIGHTING GENERAL NOTES**

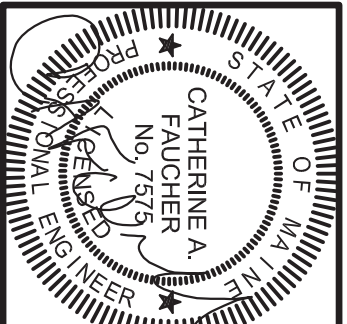
1. EXISTING LUMINAIRE SCHEDULED FOR RELOCATION ARE TO BE STORED IN A DRY AND SECURE PLACE THROUGHOUT THE PROJECT. CONTRACTOR SHALL VERIFY THE CONDITION AND TEST ALL LUMINAIRES FOR PROPER OPERATION PRIOR TO REINSTALLATION.
2. ALL LIGHTING FIXTURES SCHEDULED FOR REMOVAL SHALL BE REMOVED AND DISPOSED OF IN ACCORDANCE WITH ALL APPLICABLE REGULATIONS. ALL EXISTING LUMINAIRE SCHEDULED TO BE REINSTALLED SHALL BE FULLY CLEANED AND INOPERABLE LAMPS SHALL BE REPLACED.



A9 KEY PLAN

**EL-101A**  
ELECTRICAL LIGHTING  
PART PLAN  
-AREA A

SCALE AS NOTED  
DATE 12-14  
PLOT JOB NO. 12-14  
DRAWN NLR  
CHECKED



**UNUM ~ HOI Basement & Dock Renovations**  
PORTLAND, MAINE

161 Veranda Street  
Portland, Maine 04103  
Tel: 207.253.1250  
Fax: 207.253.1250  
www.allied-eng.com

**Allied Engineering**  
ARCHITECTS  
49 DARTMOUTH STREET  
PORTLAND, MAINE 04101  
Tel: 207.753.0899  
Fax: 207.753.0899  
www.allied-eng.com