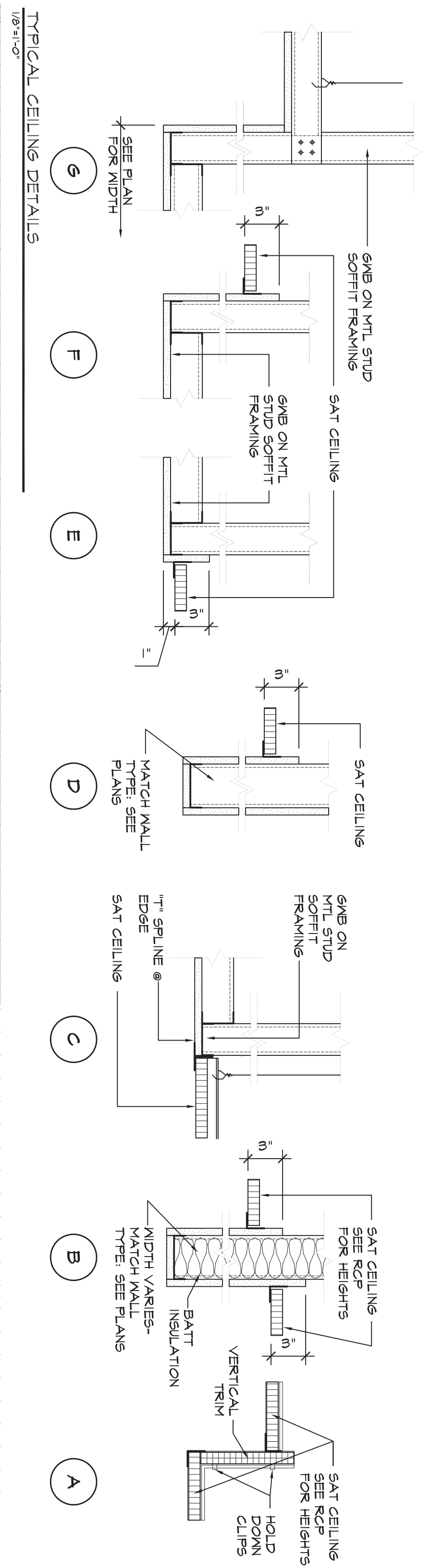


1 BASEMENT FLOOR REFLECTED CEILING PLAN-AREA B
1/8"=1'-0"



TYPICAL CEILING DETAILS
1/8"=1'-0"

GENERAL CEILING NOTES:

1. THIS CEILING PLAN IS DIAGNOSTIC IN NATURE. REFER TO ELECTRICAL AND MECHANICAL PLUMBING DOCUMENTS FOR FIXTURE TYPES AND LOCATIONS. ALL WALL PENETRATIONS AND DEVICES SHALL BE COORDINATED PRIOR TO INSTALLATION.
2. SEE MECH. DWS. FOR RETAINS AND DRIPPER REFERENCE ONLY.
3. SEE ELECT. DWS. FOR LIGHT TYPES AND ADDITIONAL DEVICES.
4. COVER GRID LAYOUT IN ROOMS UNLESS OTHERWISE NOTED.
5. ALL COMPONENTS MOUNTED IN OR ON THE EXISTING CEILING SHALL BE CEILING IN THE CEILING TILE UNLESS OTHERWISE NOTED.
6. ABATEMENT UNDER SEPARATE CONTRACT HAS REMOVED THESE CEILINGS.

EXISTING CEILING TYPES:

- X01 - EXISTING 2'x2' CEILING TILE
- X02 - EXISTING 2'x4' CEILING TILE
- X03 - EXISTING 2'x3' CEILING TILE
- X04 - EXISTING CUSTOM GRID CEILING TILE
- X6WB - EXISTING 6WB SOFFIT

EXISTING CEILING FIXTURES LEGEND:

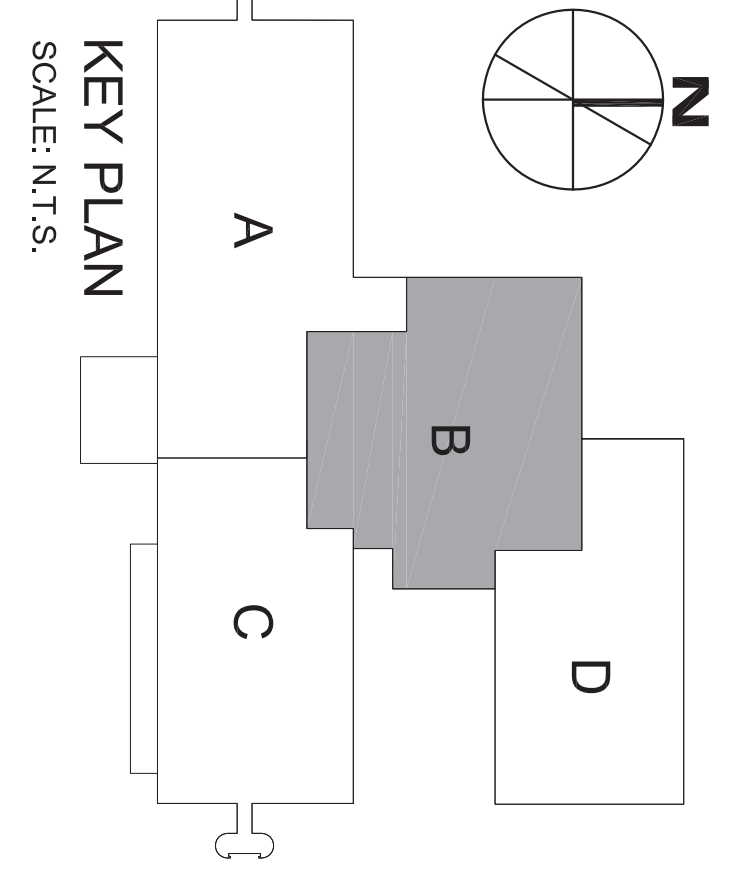
- DIRECT INDIRECT FLUORESCENT LIGHT - INCLUDES NITE AND EMERGENCY LIGHTS
- LINEAR PENDANT LIGHT
- FLUORESCENT LIGHT TROFFER
- FLUORESCENT LIGHT - LEDGED
- PLENUM VENTS (SIZES VARY)
- LINEAR FLUORESCENT LIGHT TUBE
- RECESSED CAN
- DIFFUSER
- SPEAKER
- CEILING MOUNTED STROBEMORN
- SECURITY CAMERA
- CEILING MOUNTED SECURITY CAMERA

NEW CEILING TYPES:

- C1 - NEW 2'x2' CEILING TILE
- C1 H - NEW 2'x2' CEILING TILE (HUMIDITY)
- C2 - NEW 2'x4' CEILING TILE
- C2 H - NEW 2'x4' CEILING TILE (HUMIDITY)
- 6WB - NEW 6WB SOFFIT OR CEILING

NEW CEILING FIXTURES LEGEND:

- NEW OR RELOCATED FLUORESCENT LIGHT (SEE ELECTRICAL)
- NEW OR RELOCATED RECESSED CAN (SEE ELECTRICAL)
- NEW OR RELOCATED DIFFUSER (SEE MECHANICAL)
- CEILING MOUNTED SECURITY CAMERA - SEE ELECTRICAL DRAWINGS FOR TYPE AND POSITION



KEY PLAN
SCALE: N.T.S.